

Xerox® WorkCentre®  
7220i/7225i  
Tabloid/A3-size  
Colour  
Multifunction Printer



# Xerox® WorkCentre® 7220i/7225i Colour Multifunction Printer

Meet today's tasks, build tomorrow's opportunities.



# Xerox® WorkCentre® 7220i/7225i Colour Multifunction Printer

With Xerox, you can gain an important competitive advantage with innovative tools that help you save time, control costs, and get a significant return on your investment. For more information, visit [www.connectkey.com](http://www.connectkey.com).

## The perfect touch for optimising your workflow.

Experience a simplified, and intuitive user interface that can be tailored for your individual business needs. Easily create a workflow that enables you to scan information to your selected destinations, (email, desktop, network folders, cloud repositories) in secure text searchable formats, at the touch of a button. This saves time, and allows more to be done with the information you scan and store.

Embedded apps allow you to easily connect your mobile workers to the device. Xerox® App Gallery allows you to download new apps, such as Print from DropBox™ and Scan to Microsoft® Office 365 directly from the user interface. Xerox® ConnectKey® Technology helps to streamline how your business deals with critical information – in-house or in the cloud.

Apps are available at the Xerox® App Gallery. Visit [www.xerox.com/AppGallery](http://www.xerox.com/AppGallery).

## Affordable colour that makes an impact.

Xerox® print drivers based on Microsoft® Windows® give you the ability to save different settings per application, minimising the need to make changes and reducing the risk of potential errors. Xerox® ConnectKey Technology evolves with your needs by restricting usage and regulating colour printing. The User Permission control integrates with your internal authentication system, allowing you to prevent pre-determined or non-authenticated users from seeing specific features on the user interface.

## Stay connected and productive – anytime, anywhere.

The WorkCentre 7220i/7225i allows your staff to control device functions from any workstation. The Remote Control Panel makes it more convenient to train users and for IT staff to remotely view and monitor the user interface.

Xerox® devices built on ConnectKey Technology support a Wi-Fi Direct connection that lets you print from your mobile device without having to connect to a network.

Xerox enables secure and accurate printing and scanning with a continuum of mobile options that fit your environment, with free print and scan apps, such as Xerox® Mobile Link App, plus a robust set of mobile enterprise solutions.

Learn more about why Xerox is the only choice for today's mobile professionals by visiting [www.xerox.com/mobile](http://www.xerox.com/mobile).

## Comprehensive security for complete data protection.

ConnectKey Technology provides advanced features and technologies to help ensure your company's confidential information stays secure. Our standard security features include AES 256-bit hard disk encryption, McAfee® protection powered by Intel Security, image overwrite, secure print with timed deletion and emailing to external mail servers.

For more information about how Xerox helps make you more secure, visit [www.xerox.com/security](http://www.xerox.com/security).



## More flexibility regardless of location.

Improve your mobile printing experience.

- **Apple® AirPrint®.** Print email, photos and important office documents directly from your Apple iPhone® or iPad® with no drivers to install. With AirPrint, your iPhone or iPad automatically locates and connects to the AirPrint-enabled device over your office Wi-Fi network.
- **Xerox® Print Service Plug-in for Android™.** Android printing is simple without third-party apps or print drivers. This plug-in lets you easily print to a Xerox® ConnectKey Technology-enabled MFP through a wireless network.

## Xerox® Easy Translator Service.

This optional service allows customers to scan a document and receive a translated print and/or email notification. Users can also send an image from an iOS or Android device, or a PC, that is forwarded for translation. For more information, visit <https://xeroxtranslates.com>



To learn more about ConnectKey Technology-enabled features, go to [www.xerox.com/ConnectKeyEG](http://www.xerox.com/ConnectKeyEG).



- 1 With a compact footprint, the Xerox® WorkCentre® 7220i/7225i delivers more functionality while taking up less space. Add basic finishing capabilities with the Integrated Office Finisher without increasing the footprint.
- 2 The Duplex Automatic Document Feeder holds 110 sheets of paper.
- 3 50-sheet bypass tray for speciality media and sizes.
- 4 Choose the configuration that meets your needs: a two-520-sheet tray with stand configuration holding up to 1,040 sheets of 11 x 17 in. / A3 paper, or a four-tray configuration holding up to 2,080 sheets.
- 5 Office Finisher LX (with Booklet Maker option) provides advanced finishing functions at a value price.
- 6 Customisable 7-inch user interface
- 7 Standard apps for extra convenience. Xerox® App Gallery, @PrintByXerox and QR Code help with mobile printing and pairing and loading new apps.

### Finishing Options

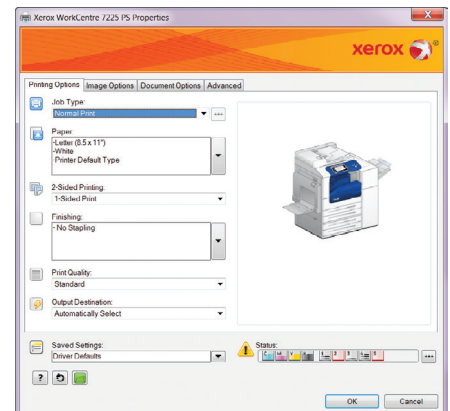


### Keep your costs under control

With the WorkCentre 7220i/7225i, you'll impact your bottom line – and impress your customers – with colour that's as bold as it is affordable.

- **Customise your print driver settings for economy and efficiency.** For example, choose N-up for printing multiple pages on a single sheet as your default. Adjust settings for specific applications, such as always printing emails in black and white.
- **Print responsibly.** By default, our print driver is set to two-sided printing, and the Earth Smart feature allows you to select other default settings that encourage responsible usage, such as no printing banner pages.

- **Easy, accurate billing;** The WorkCentre 7220i/7225i has the ability to connect to the network to automatically submit meter readings so that toner replenishment can be streamlined to enable more productivity.
- **Manage and track device usage.** Xerox® Standard Accounting provides reports for greater cost control of all device functions. Advanced solutions from Xerox Alliance Partners deliver even more helpful tools for larger office environments.
- **Earth-smart printing.** Our innovative Earth Smart feature allows you to choose the most environmentally sensitive options for your print jobs.





The WorkCentre 7220i/7225i Colour Multifunction Printer is built on Xerox® ConnectKey® Technology. For more information, visit [www.connectkey.com](http://www.connectkey.com)

Device Specifications		WorkCentre 7220i	WorkCentre 7225i
Speed		Up to 20 ppm colour and black and white	Up to 25 ppm colour and black and white
Duty Cycle <sup>1</sup>		Up to 50,000 pages / month	Up to 60,000 pages / month
Hard Drive / Processor / Memory		Minimum 250 GB HDD / 1.2 GHz Dual-core / 2 GB system plus 1 GB page memory	
Connectivity		10/100/1000Base-T Ethernet, High-Speed USB 2.0 direct print, Wi-Fi Direct with Optional Xerox® USB Wireless Adapter	
Controller Features		Unified Address Book, Remote Control Panel, Online Support (accessed from the user interface and print driver), Configuration Cloning	
<b>Copy and Print</b>			
Copy Resolution		Up to 600 x 600 dpi	
Print Resolution		Up to 2400 x 600 image quality	
First-copy-out Time (as fast as)		8.4 seconds colour / 7.1 seconds black and white from the Platen	8.7 seconds colour / 7.2 seconds black and white from the Platen
First-print-out Time (as fast as)		8.8 seconds colour / 7.0 seconds black and white	9.1 seconds colour / 7.1 seconds black and white
Page Description Languages		PCL® 5c / PCL 6, XML Paper Specification (XPS®), Adobe® PostScript® 3™ (Optional), PDF <sup>2</sup>	
Print Features		Print from USB <sup>2</sup> , Encrypted Secure Print, Xerox® Earth Smart Driver Settings, Job Identification, Booklet Creation, Store and Recall Driver Settings, Bidirectional Real-time Status, Scaling, Job Monitoring, Xerox® Colour By Words <sup>3</sup> , Application Defaults, Two-sided Printing (as default), Hold All Jobs	
Mobile Printing and Apps	Standard	Apple® AirPrint®, Mopria® Certified, QR Code App, Xerox® App Gallery App, @PrintByXerox App	
	Free Download	Xerox® Print Service Plug-in for Android, Mopria® Print Service Plug-in for Android™, Xerox® Mobile Link App	
	Optional	Xerox® Mobile Print, Xerox® Mobile Print Cloud, Xerox® Easy Translator Service <sup>2</sup>	
<b>Scan</b>	Standard	<b>Destinations:</b> Scan to Mailbox, Scan to USB, Scan to Email, Scan to Network; <b>File Formats:</b> PDF, PDF/A, XPS, JPEG, TIFF; <b>Convenience Features:</b> Scan to Home, Single Touch Scan, Searchable PDF, Single/Multi-Page PDF / XPS / TIFF, Encrypted / Password Protected PDF, Linearised PDF / PDF/A	
	Optional	ConnectKey® for DocuShare®, Xerox® Scan to PC Desktop® SE and Professional, other solutions available through various Xerox Alliance Partners	
<b>Fax</b>	Standard	Internet Fax, Fax Build Job, Network Server Fax Enablement	
	Optional	Walk-up Fax (one-line and two-line options, includes LAN Fax and Fax Forward to Email or SMB)	
<b>Security</b>	Standard	McAfee® Embedded, McAfee ePolicy (ePO) Compatible, HDD Overwrite, AES 256-bit Encryption (FIPS 140-2 compliant), SHA-256 Hash Message Authentication, Common Criteria Certification (ISO 15408) <sup>4</sup> , Encrypted Secure Print, Secure Fax, Secure Scan, Secure Email, Cisco® TrustSec Identity Services Engine (ISE) Integration, Network Authentication, TLS, SNMPv3, Audit Log, Access Controls, User Permissions	
	Optional	McAfee Integrity Control, Smart Card Enablement Kit (CAC/PIV/.NET), Xerox® PrintSafe Software	
<b>Accounting</b>	Standard	Xerox® Standard Accounting (Copy, Print, Scan, Fax, Email), Network Accounting Enablement	
	Optional	Equitrac Express®, Equitrac Office®, YSoft® SafeQ®, other network accounting solutions available through various Xerox Alliance Partners	
<b>Paper Input</b>	Standard	<b>Duplex Automatic Document Feeder:</b> 110 sheets; Sizes: 5.5 x 8.5 in. to 11 x 17 in. / 148 x 210 mm to 297 x 420 mm; Custom sizes: 3.3 x 4.9 in. to 11.7 x 17 in. / 85 x 125 mm to 297 x 432 mm	
		<b>Bypass Tray:</b> 50 sheets; Custom sizes: 3.5 x 3.9 in. to 11.7 x 17 in. / 89 x 98 mm to 297 x 432 mm	
		<b>WorkCentre 7220i/7225i (Trays 1 and 2 with Stand):</b> 520 sheets each; Sizes: 5.5 x 8.5 in. to 11 x 17 in. / A5 to A3; Custom sizes: 5.5 x 7.2 in. to 11.7 x 17 in. / 140 x 182 mm to 297 x 432 mm	
		<b>WorkCentre 7220i/T/7225i/T (Trays 1-4):</b> 520 sheets each; Sizes: 5.5 x 8.5 in. to 11 x 17 in. / A5 to A3; Custom sizes: 5.5 x 7.2 in. to 11.7 x 17 in. / 140 x 182 mm to 297 x 432 mm	
	Optional	<b>Envelope Tray:</b> Up to 60 envelopes: #10 commercial, Monarch, DL, C5; Custom sizes: 3.9 x 5.8 in. to 6.4 x 9.5 in. / 98 x 148 mm to 162 x 241 mm	
<b>Paper Output / Finishing</b>	Standard	<b>Dual Catch Trays:</b> 250-sheets each, Lower tray offsets	
	Optional	<b>Integrated Office Finisher:</b> 500-sheet stacker, 50 sheets stapled, single-position stapling <b>Office Finisher LX:</b> 2,000-sheet stacker, 50 sheets stapled, 3-position stapling, optional booklet maker (score, saddle stitch) <b>Convenience Stapler:</b> Staples 50 sheets (based on 75 gsm), recommended use with optional Work Surface	

<sup>1</sup> Maximum volume capacity expected in any one month. Not expected to be sustained on a regular basis; <sup>2</sup> PostScript option is required for Xerox® Easy Translator or to print PDFs or PostScript files from a thumb drive;

<sup>3</sup> Only available in the optional Adobe® PostScript® 3™ driver; <sup>4</sup> Undergoing evaluation.

Xerox® ConnectKey® Technology	Xerox Corporation	Xerox® Easy Translator Service	Xerox® App Studio	Xerox® Mobile Print Cloud 2013 and 2015 Pick	Xerox® Mobile Print Solution 2014 and 2015 Pick	WorkCentre 7220 2015 Pick
2016 Outstanding Achievement in Innovation	2014, 2015 and 2016 Document Imaging Software Line of the Year	2016 Outstanding Achievement in Innovation	2015 Outstanding Achievement in Innovation	Outstanding Small Business Mobile Print Solution	Outstanding Enterprise Mobile Print Solution	Outstanding Entry-Level 20-ppm A3 Colour MFP
<a href="#">2016 Article</a> <a href="#">2016 Certificate</a>	<a href="#">2016 Article</a> <a href="#">2016 Certificate</a>	<a href="#">2016 Article</a> <a href="#">2016 Certificate</a>	<a href="#">2015 Article</a> <a href="#">2015 Certificate</a>	<a href="#">2015 Article</a> <a href="#">2015 Certificate</a>	<a href="#">2015 Article</a> <a href="#">2015 Certificate</a>	<a href="#">2015 Article</a> <a href="#">2015 Certificate</a>

For more detailed specifications, go to [www.xerox.com/office/WC7200Specs](http://www.xerox.com/office/WC7200Specs).

Build and configure your own Xerox® WorkCentre 7220i/7225i Colour Multifunction Printer at [www.buildyourownxerox.com/connectkey](http://www.buildyourownxerox.com/connectkey).

