

XEROX®

Technology | Document Management | Consulting Services

WorkCentre® 7655 / 7665 / 7675



copy | print | scan | fax | email

WorkCentre® 7655/7665/7675 Evaluator Guide



ABOUT THIS GUIDE

This guide will introduce you to the WorkCentre® 7655/7665/7675 series of advanced multifunction printers, and aid you in your evaluation process.

CONTENTS

Section 1 — Product Overview 1

Section 2 — Evaluating Multifunction Printers 3

This section suggests specific features to look for in a product of this class, how to evaluate those features, and how the Xerox products exceed expectations.

Productivity	4
Installation and Deployment	5
Ease-of-Use and Management	6
Reliability	8
Versatility	10
Finishing Capabilities	13
Security Capabilities	14
Cost Control	16

Section 3 — Inside the WorkCentre 7655/7665/7675 Series 18

Section 4 — Configurations, Specifications, Supplies, Support and Information Sources 19

Configuration Summary	19
Specifications	20
Supplies and Options	20
Support and Additional Information Services	21

Product Overview

The Xerox WorkCentre® 7655/7665/7675 series of multifunction printers bring powerful productivity and light-production features to any office. Multiple configurations enable you to purchase a copier only and then upgrade it with network features like printing, faxing and scanning as your needs grow.

The WorkCentre 7655/7665/7675 series is designed as a departmental color device that meets your monochrome needs without sacrificing performance for your color requirements. A superior array of options includes finishing features such as booklet making; saddle stitching; hole punching; and V-, C-, and Z-folding for professional-looking, distribution-ready output.

Find the perfect fit for your office and choose the speed that best fits your needs.

WorkCentre 7655 — 55 ppm black-and-white, 40 ppm color

WorkCentre 7665 — 65 ppm black-and-white, 50 ppm color

WorkCentre 7675 — 75 ppm black-and-white, 50 ppm color

This powerful digital platform is ready to go to work when you are. With a speedy first-copy-out time of just 5.5 seconds for black-and-white (8.9 seconds for color) and a standard input capacity of 3,260 sheets, it will be a productive addition to any office. And a 250-sheet Duplex Automatic Document Feeder easily handles mixed media sizes and weights.

The WorkCentre 7655/7665/7675 series also benefits today's IT organizations by delivering easy integration, support for additional applications with Xerox Extensible Integration Platform (EIP), simple deployment, and robust support and tools for management of one or a fleet of systems. The powerful integrated controller in the WorkCentre 7655/7665/7675 series is designed to optimize user productivity, minimize the associated network traffic it produces, and deliver a rich set of features to suit the needs of your environment.



NEW AND ENHANCED FEATURES OF THE WORKCENTRE 7655/7665/7675 OF MULTIFUNCTION PRINTERS INCLUDE:

- Advanced and automated technology ensures consistent, convenient color without complications
- New WorkCentre 7675 model raises performance up to 75 ppm black-and-white and 50 ppm color
- Three finishing options include new Light Production Finisher module
- Concurrent operation means you can program copy, scan and fax jobs while the MFP is busy with print or copy jobs
- Store and reprint commonly printed jobs via convenient front panel access
- Extensible Interface Platform (EIP) enables integration with enterprise workflow applications
- Send faxes from your desktop with optional LAN Fax functionality
- Handles light and heavy office papers in a wide range of sizes — up to 300 gsm and 13 x 19 in. (SRA3)
- Auto-duplex heavy media (up to 176 gsm) from all trays
- 5,260-sheet maximum paper capacity, with optional high-capacity feeder
- Easy to change SMart Kits™ help keep you up and running
- Control usage and cost with Copy Auditor and Xerox Standard Accounting (XSA)



Security Enhancements

802.1x Support — Ensures devices connected to the network are properly authorized

Auto-Schedule On Demand Overwrite — Schedule image overwrite processes for specific times, such as during off-hours, to eliminate downtime during business hours

IPv6 Support — Built-in support for networks utilizing the IPv6 standard

Hide Print Job Name in Queue — Hides or obscures document names when the job queue is viewed from the front panel or via CentreWare IS

LDAP Authentication/Secure LDAP — Adds ability to configure LDAP requests to only people with user IDs are authenticated by the LDAP server

LDAP Filtering — Prevents unauthorized network access based on IP address or port number

User Data Encryption — Files saved to the WorkCentre 7655/7665/7675 series hard drive are encrypted

Xerox Secure Access Unified ID System™ (optional) — Smart card-based user authentication for device access

Scanning Enhancements

Scan to Home — Users can send scanned images directly to their personal directories, such as My Computer, using the authenticated user's credentials to gain access

Scan to Mailbox — Scans images to the WorkCentre hard drive, for retrieval via web browser

Scan to Searchable PDF and XPS Formats — Performs optical character recognition while scanning hard copy documents

Linearized PDF — Supports linearized PDF files, allowing specific pages to be available for display in a user's web browser while the rest of the file is still downloading

SECTION 2

Evaluating Multifunction Printers

Evaluation Criteria

As the company that invented laser printing, Ethernet networking, and the first digital Multifunction Printer (MFP), Xerox has invested years of research and development into designing the most productive office devices in the industry. This experience makes Xerox the recognized leader in office MFP design and performance. Based on our in-depth understanding of customer needs in the office, Xerox suggests considering the following criteria when evaluating a shared MFP:

Productivity

Can it keep up with the demands of a multiple-user environment?

Installation and Deployment

How does the MFP ease the demands of the deployment process?

Ease-of-Use and Management

Are all the capabilities integrated and intuitive?

Reliability

Is it designed and built for demanding use and backed by a quality organization?

Versatility

Can the MFP grow with changing demands?

Finishing

Can the MFP provide the distribution-ready documents that you require?

Security

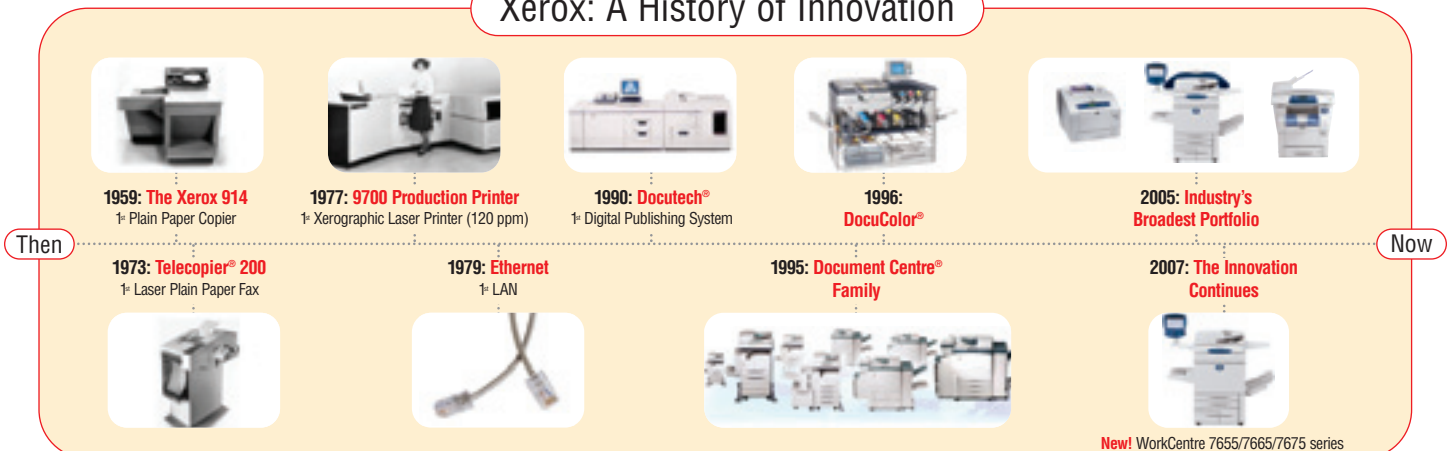
Is the MFP able to keep your confidential information safe?

Cost Control

Can you monitor and control your organization's cost of printing?

MFPs often look the same from the outside. Based on a quick look at speeds, feeds, and print resolution specifications, it is tempting to conclude that most MFPs are basically equal. This section of the Evaluator Guide will suggest ways you can thoroughly evaluate them, and will ultimately illustrate how the Xerox WorkCentre® 7655/7665/7675 series can exceed your expectations.

Xerox: A History of Innovation



In addition to actual print engine speed, consider the things that affect overall throughput. Are the scanning and faxing features **powerful enough** for your busy workgroup? What is the **warm-up wait time**? Is the device sized for the **entire workgroup**? Can features be used at the **same time** or are users forced to wait until the device is free? Can you **monitor the device functions** from your desktop and at the device?

HOW THE XEROX WORKCENTRE® 7655/7665/7675 SERIES EXCEEDS THE PRODUCTIVITY REQUIREMENT

Performance

The productivity of the WorkCentre 7655/7665/7675 series starts with the fast print engine, which delivers 55 ppm black-and-white and 40 ppm color in the WorkCentre 7655, 65 ppm black-and-white and 50 ppm color in the WorkCentre 7665, and 75 ppm black-and-white and 50 ppm color in the WorkCentre 7675. Powerful scanning capabilities include single-pass duplex scanning at up to 80 ppm black-and-white and 50 ppm color, DADF capacity up to 250 sheets, resolutions from 200 x 200 dpi to 600 x 600 dpi, and support for multiple scanning destinations. All network-print-enabled configurations come with the powerful Xerox controller, which features a 1.8 GHz AMD Athlon™ microprocessor and 1 GB of memory. This controller enables fast first-copy-out times of 5.5 seconds for black-and-white and 8.9 seconds for color, and the machine warms up in less than 30 seconds from low-power mode.

Image Quality

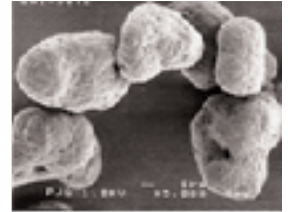
The WorkCentre 7655/7665/7675 is based on cutting-edge technology that delivers reliable, best-in-class image quality. These technologies include:

- **EA-HG Toner** — Emulsion Aggregate High-Grade toner is chemically grown to deliver small, uniformly shaped particles that result in crisp text and images, vibrant colors and smooth transitions.
- **Trickle Charge Development** — Developer material is included in the toner cartridges, enabling fresh developer to be constantly added and delivering consistently high quality print after print and copy after copy.
- **Belt Fusing** — The belt fuser has an extended contact area, meaning toner adheres more completely to the pages — ensuring higher quality at faster printing speeds.
- **Micro Tandem Engine and Intermediate Belt Transfer** — Cyan, magenta, yellow and black colors are processed individually, and the images are transferred onto an intermediate image belt, which registers images before they are transferred to the page. A two-sided print passes through the print engine only twice, with better image registration and printing reliability.

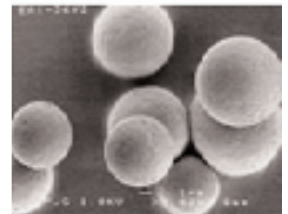
Network Performance/Concurrency

The WorkCentre 7655/7665/7675 is easy on your network and avoids bottlenecks at the front panel. With RAM collation, files are sent over the network just once, no matter how many sets are printed. Job pipelining allows the MFP to process print jobs even if the print engine is busy with an earlier print job, optimizing system performance by avoiding delays during job processing.

Traditional Toner



EA Toner



EA Toner allows precise reproduction due to uniform particle size and shape.



Monitoring System Status

There are no unknowns. Up-to-date information on every job — print, copy, scan, email, or fax — plus in-depth device information at your fingertips. Both at the device and from your desktop, you can manage documents and jobs through an integrated job queue, display job progress and status, and manage jobs all with a few mouse-clicks or button pushes.

EVALUATE**INSTALLATION AND DEPLOYMENT**

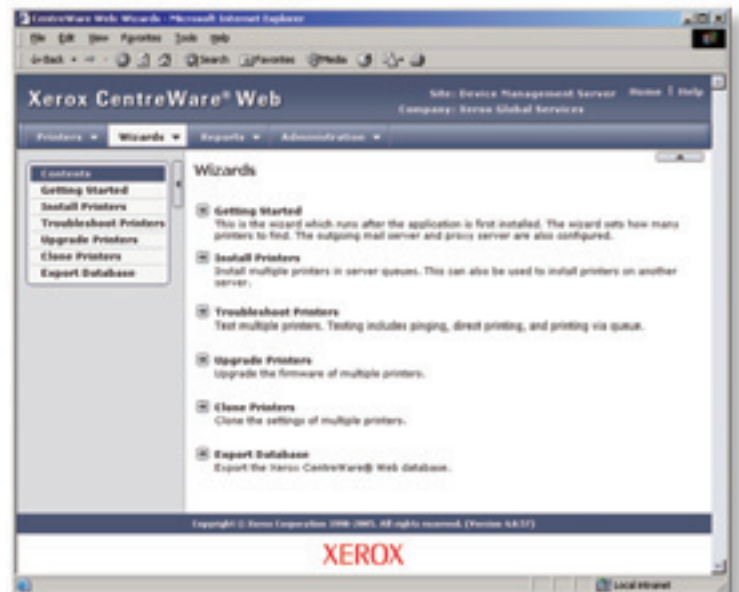
Installing and deploying a fleet of multifunction systems throughout your organization is a potentially time-consuming and complicated process. This setup is not limited to physically placing the units in your environment, it's really about how these systems will integrate into your **existing network infrastructure**. You also need to consider how the process of **deploying printing and scanning services** to your users can be automated.

Installation

When you choose Xerox, you can rest assured that your equipment will be delivered and installed into your environment to your specifications and expectations. All network-enabled configurations include an embedded 10/100Base-TX Ethernet connection with innovative features like auto IP addressing, device naming, and Ethernet speed sensing to provide simple and automatic installation on networks. These features make the WorkCentre quick and easy to get up and running. Management and system setup can be accomplished through a variety of means, including the easy, wizard-based process found within Xerox CentreWare® Web. Additionally, the WorkCentre can integrate with third-party management applications like Unicentre® TNG, IBM® Tivoli® NetView®, Microsoft® Management Console, and HP WebJetAdmin. Cloning capabilities allow fleets of devices to be installed with identical settings, eliminating the need to set up each system individually.

Deployment

Another critical area to evaluate is the process by which you deploy print and scan drivers to your user population. Print and scan drivers can be deployed centrally — your IT staff won't have to walk desk to desk and manually install new drivers. In many cases, existing Xerox drivers on your network can work with your new hardware, potentially saving the step of updating your users' driver software altogether. Again, wizards are provided within CentreWare Web to aid in installing, troubleshooting, and upgrading your users' driver software, freeing up your IT staff for more pressing projects.



EVALUATE

EASE OF USE AND MANAGEMENT

Look for **fully integrated functionality** that work together to create more value than the sum of their parts. Are the functions **easy to learn**? Is the user interface **consistent** from function to function? Do the network features give you **full access** to the power of your network? Does the device include **additional software** to take full advantage of your digital documents? Is the device easy for your IT group to **manage as part of its infrastructure**?

ADVANTAGE XEROX

HOW THE XEROX WORKCENTRE® 7655/7665/7675 SERIES EXCEEDS THE EASE-OF-USE REQUIREMENT

Consistent User Interface

It doesn't matter if the job is simple or complex — a large color user interface (UI) with a touch panel and intuitive tab selections makes even advanced functions simple and convenient and minimizes the training required to get your users up and running. Because the UI paths are consistent across much of the Xerox MFP product line, your users can easily use a mix of Xerox products.

Accessible Advanced Features

Advanced features like Covers, Transparency Interleave and N-up give you a variety of output options. And with Build Job, you can easily integrate documents from the document handler and the platen, or from different paper trays — you can even mix simplex and duplex output into a single job. Use Sample Last Segment to review or change the output of your job section by section. There's no need to rescan the entire job if you make an error, use Sample Set™ to run a proof set of the entire job to be sure the output exactly matches your requirements before it's printed.



Bidirectional Drivers

Print-capable versions of the WorkCentre 7655/7665/7675 series include CentreWare® print drivers, which feature a clear, graphical user interface that provides an easy, intuitive way to interact with the printer. The drivers provide immediate desktop access to all WorkCentre output functions. The drivers also provide bidirectional information, indicating device and job status, currently loaded paper sizes and types, and installed options — so there is no need to consult other software in order to obtain this information.

Advanced functions such as Watermarks, Invert Image, Print-To-Edge, N-up, Booklet Layout, Transparency Interleaving, Covers and Toner Saver are simple to access from the print drivers and front panel. Easy-to-understand icons access the most commonly used functions, such as paper select and document finishing. Plus with the Saved Settings feature, frequently used print job parameters can be stored for reuse.

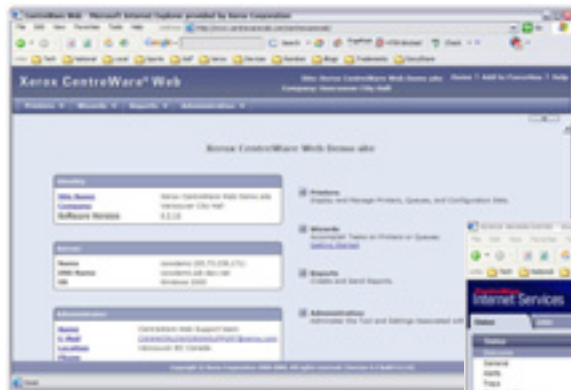
Network Management

It couldn't be easier for the network administrator; The WorkCentre 7655/7665/7675 series integrates seamlessly into virtually any network environment. Network configuration is easy with CentreWare install wizards — which eliminate the need for IT staff to reset parameters, connect users or manage job queues device by device. Onboard SNMP support lets customers integrate with other network frameworks.

Xerox CentreWare Software

Xerox CentreWare® Web management software is a powerful device-management solution for IT, free software eases the chore of installing, configuring, managing, monitoring and pulling reports from the networked printers and MFPs throughout an enterprise, regardless of their manufacturer. Xerox also addresses enterprise asset management through compatibility with network management tools for Sun, Novell, Microsoft and other environments.

The WorkCentre 7655/7665/7675 also includes CentreWare® IS Embedded Web Server, which allows users and IT personnel to perform detailed status checks and manage system settings without any special software tools.



Xerox CentreWare Web is web-based software that installs, configures, manages, monitors and reports on the networked printers and multifunction devices throughout an enterprise – regardless of manufacturer.



CentreWare Internet Services is a web server embedded in every WorkCentre product. You can submit and monitor print jobs and machine status from anywhere – from your intranet to the web.

Xerox Office Services

Lastly, Xerox offers a set of services for managing document output and asset infrastructure in the office. These services deliver measurable business results by leveraging a powerful set of office technologies, business processes, methodologies, and software tools to reduce costs and improve productivity. These offerings are summarized in Section 4 of this guide.

EVALUATE

RELIABILITY

Productivity relies on tools that do their job day in and day out. Consider how often you need to intervene with the machine to **replace paper or other consumables**, or to **clear jams** or other problems. How **easy is that intervention**, and **how long is the device typically down**? If outside assistance is required, how **easy is it to arrange**, and how long do you have to wait? Is the device a **reliable network citizen**? Has it been **tested and certified** by independent industry participants?

ADVANTAGE XEROX

HOW THE XEROX WORKCENTRE® 7655/7665/7675 SERIES EXCEEDS THE RELIABILITY REQUIREMENT

Day-to-Day Reliability

Simple paper paths and a minimum of moving parts mean there is very little that can go wrong. Any paper jams or misfeeds that do occur are all accessed from the front of the machine, making these easy issues for users to resolve without calling the IT Help Desk. Most components that wear out over time can simply be replaced without a service call. You're up and running without delay.

The WorkCentre 7655/7665/7675 series has been engineered to minimize user interventions and downtime. One clear example: In most office environments, a majority of the documents copied and printed on the MFP will be black-and-white. The WorkCentre 7655/7665/7675 has been specifically designed with two black toner cartridges to double the black toner capacity and help avoid machine downtime.

Other advancements that contribute to the reliability of the WorkCentre 7655/7665/7675:

- The short, straight paper path also allows the WorkCentre 7655/7665/7675 to reliably handle heavyweight paper — up to 110 lb. index (220 gsm) from Trays 1 through 4, and up to 170 lb. index (300 gsm) from the Bypass Tray.
- Easy-access SMart Kit™ customer replaceable units include:
 - EA-HG toner cartridges
 - Waste toner container
 - Fuser module
 - Print drums
 - Staple cartridges

Service/Support

Building on the reliability that is engineered into the WorkCentre 7655/7665/7675 series, Xerox has trained and developed a sophisticated service-delivery network that helps you maintain your equipment, address equipment issues that you may encounter, and train you and your users on how to get the most out of your equipment.

Certification

The WorkCentre 7655/7665/7675 series has been evaluated for functionality and quality by a number of independent entities and has been awarded the following certifications:

- FCC Class A Compliant (US), DOC Class A Compliant (Canada)
- 89/336/EEC (Europe)
- UL Listed (UL 1950, Third Edition)
- CB Certified (IEC 60950/EN 60950)
- 73/23/EEC (Europe)
- 95/5/EEC (Europe)
- ENERGY STAR®*



For 7665/7675
models only

*All models except WorkCentre 7655.

EVALUATE

VERSATILITY

How many **functions** can the device perform? How easy is it to **upgrade** from basic functions to more advanced functions? Can **specific functions be added** as requirements grow? Can multiple functions be performed **simultaneously**?

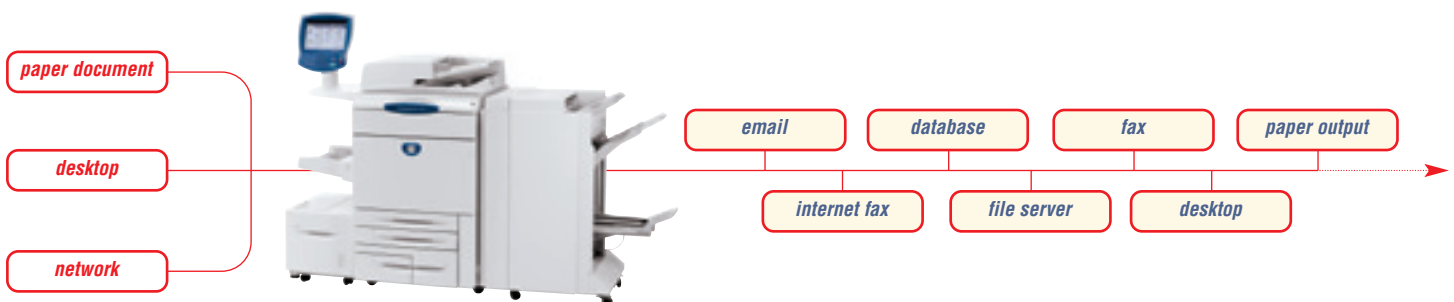
ADVANTAGE XEROX

HOW THE XEROX WORKCENTRE® 7655/7665/7675 SERIES EXCEEDS THE VERSATILITY REQUIREMENT

Scanning Features

Give your hard copy documents new life as digital files. Make the best use of both hard copy and digital files and use your WorkCentre 7655/7665/7675 series to move, manage, manipulate, capture, repurpose and distribute your documents via email, internet fax, embedded fax, network server fax or network scanning. Choose the file format (PDF, JPEG, TIFF) and compression (MRC, JBIG2) that works best for you with Xerox optional document distribution services:

- **Network Scanning** offers a whole new set of choices. This versatile solution lets you send hard copy documents to a wide range of destinations, where they can be integrated into existing networks and client applications, or into customized image capture and workflow management solutions provided by Xerox or by Xerox Business Partners.
 - **Scan to PC Desktop®** scanning sends hard copy directly to a PC desktop where it can be easily moved into word processing applications, spreadsheets and databases for editing, distribution and storage.
 - **Xerox FreeFlow® SMARTsend** makes routing and distributing scanned files easy.
 - **Scan to Applications/Network File Server** makes large volumes of hard copy available to anyone on your network.
 - **Scan to Searchable PDF** makes scanned content available to search engines.
 - **Scan to Mailbox** stores scanned images on the WorkCentre hard drive, for retrieval via web browser.
 - **Scan to Repository/Digital Archive** moves documents into electronic filing systems for easy access.
 - **Scan to Home** sends scanned images directly to a user's personal directory, such as "My Computer," using the authenticated user's credentials to gain access.
 - **Scan to Email/Distribution List** includes LDAP functionality, for integration with corporate email directories.
 - **Scan to Electronic Document Management System** makes sure your documents are secure and easy to access.
 - **Scanning Color Documents** preserves all the color information for later use in electronic files or color printing or copying.



Fax Features

- **Internet Fax** to any remote internet fax terminal, including another WorkCentre device. Internet Fax takes advantage of your existing network and integrates easily with your email server, eliminating costly long-distance charges. You can receive and print documents sent from any compliant Internet Fax device or email client, allowing more effective use of assets and reducing the number of devices on your network.
- **Network Server Fax** gives you an integrated solution that maximizes your network fax investment. It's as easy as walk-up copying. Maintain central management and control of your fax server while providing versatile walk-up fax input and output options at your WorkCentre, including two-sided scanning and printing, stapling, and even secure printing of your fax documents. There is no need for a separate telephone line, and there are fewer devices and supplies to maintain. Visit the Xerox Partner web site for a complete listing of Xerox validated network server fax providers.
- **Embedded Fax** is the solution for traditional telephone fax workflows. With WorkCentre Embedded Fax you can fax while printing or copying and eliminate separate fax machines. The dual-line option enables concurrent sending and receiving. Print faxes on special paper, or have them stapled. Use the secure fax feature for faxes that are for your eyes only.
- **LAN Fax** makes faxing electronic files as easy as printing. LAN Fax saves you the time and hassle of printing documents to be faxed by allowing you to fax the document electronically via the WorkCentre 7655/7665/7675 series print driver.

Print Features

Powerful print features are accessed primarily through the bidirectional print driver which allows users to easily build their jobs by selecting paper types, finishing options, security settings, and more in-depth features such as page-level programming for jobs including covers, tabs/inserts, special colored pages, and more. The print driver supports both PCL® and PostScript® printing with the same interface, and users can view job status, supplies and system settings, and troubleshooting information as well.

Copy Features

Concurrent processing in the WorkCentre 7655/7665/7675 series means users can scan the next copy job, even while the print engine is busy keeping lines from forming at the machine during periods of heavy use. The powerful and easy-to-use front panel allows for granular programming of copy jobs and includes features such as sample set, mixed-size originals, and the ability to work around jobs that require media not currently loaded into the system.



Media Support

A wide range of paper sizes and weights are supported. Paper sizes up to 13 by 19 in. (330 x 483 mm) are supported through the bypass tray. Labels and card stock run effortlessly with great reliability. All trays support media up to 110 lb. index (220 gsm), with up to 170 lb. index (300 gsm) through the bypass tray and auto duplex support up to 176 gsm. Save money by bringing outsourced work in-house with the media and finishing flexibility of the WorkCentre 7655/7665/7675 series.

Upgradability/Extensibility

Upgrade as your needs change and add more powerful document distribution capabilities such as network scanning, email, or additional faxing or network accounting capabilities. You can also add paper handling and finishing options to extend the functionality of your MFP system.

Extensible Interface Platform

Xerox Extensible Interface Platform (EIP) is an embedded software platform that provides the means for software developers to quickly build solutions that are more intuitive and user-friendly for office workers.

Chief among the capabilities provided by EIP is the development of tailored applications with customized user interfaces, as well as card-based authentication solutions supporting a personalized user experience.

The opportunities to allow your organization to work faster and more effectively are endless. EIP enables applications that allow users to do such things as:

- Browse through a list of online documents in your organization's enterprise content management (ECM) system, and select one (or more) for printing.
- Browse to a personal folder in that same ECM system and scan a hardcopy document for storage with the touch of a button.
- Identify themselves to the MFP with the wave (or swipe) of their ID cards, and then be presented with their own personalized lists of locations for retrieving or scanning documents.

Concurrency

To keep your users productive and avoid bottlenecks at the MFP, the controller in the WorkCentre 7655/7665/7675 series is equipped for concurrent operation. Many MFPs can only perform one function at a time — so if the device is in the midst of a long print run, a user couldn't process a scan job or send a fax until the print job is complete. Xerox has preempted this situation by enabling the WorkCentre 7655/7665/7675 series to continue to process fax and scan jobs, and also program and queue additional copy jobs, while the print engine is busy.

EVALUATE

FINISHING CAPABILITIES

What **finishing requirements** does your office or department require? Does the finisher have the capacity to meet your demands? Can the finisher **staple or hole-punch** your multipage documents in a variety of locations? Can multipage documents be **precollated** to speed the output? Can you select from **multiple finishers** to meet your specific requirements?

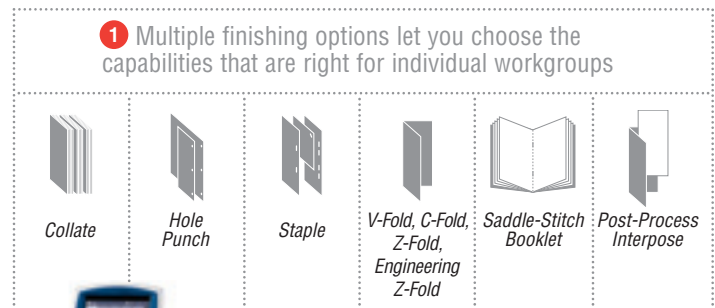
ADVANTAGE XEROX

HOW THE XEROX WORKCENTRE® 7655/7665/7675 SERIES EXCEEDS THE FINISHING CAPABILITIES REQUIREMENT

Whether you need unstapled output, 100-sheet multipositioned stapled output, hole-punched documents, or fully finished saddle-stitched booklets, the WorkCentre 7655/7665/7675 series has finishing options to meet your needs.

- The Advanced Office Finisher boosts output capacity to 3,500 sheets and adds 50-sheet multiposition stapling and hole-punching capabilities with two separate output trays.
- The Professional Finisher with Booklet Maker extends the capabilities to include bi-folded booklets (5 sheets maximum), saddle-stitching, and center-folded booklets (15 sheets maximum) with three output trays.
- The new Light Production Finisher with optional folding delivers 100-page stapling with wire-cut stapler, booklet maker and post-process interposer. Optional C and Z folding is available, with support for Letter, Tabloid, A4 and A3 paper sizes.

With these finishing options, you can create training brochures, newsletters, manuals, and other professional-looking documents on demand in color and black-and-white.



Large input capacity of up to 5,260 sheets

2 3 500-sheet universal-size trays	4 870-sheet letter-size tray	5 1,140-sheet letter-size tray	6 250-sheet bypass tray	7 2,000-sheet optional high-capacity feeder
---------------------------------------	---------------------------------	-----------------------------------	----------------------------	--



EVALUATE

SECURITY CAPABILITIES

What type of **security requirements** does your office require? Does the device have the **security features** to meet this demand? Can device access be **password protected**? Does the device **remove latent images** on disk drives and in memory? Does the MFP vendor participate in **third-party testing and certification**?

ADVANTAGE XEROX

HOW THE XEROX WORKCENTRE® 7655/7665/7675 SERIES EXCEEDS THE SECURITY CAPABILITIES REQUIREMENT

Built-in Security

Xerox is committed to the security of its products and takes a unique approach to security within the document industry: Xerox believes security should be built in as a core component of the MFP system and its controller.

The WorkCentre 7655/7665/7675 series offers built-in security features for physical and network-based access controls, user authentication, usage tracking, file encryption, and file deletion to fully comply with the IT organization's information security policies. This is accomplished through intelligent design architecture that complies with stringent industry security standards and increasing regulations in the government, military, health care (HIPAA), legal (Sarbanes-Oxley), financial (Gramm-Leach-Bliley Act) and pharmaceutical (FDA 21 CFR Part 11) sectors. The security capabilities of WorkCentre 7655/7665/7675 series MFPs can be further extended with solutions from Xerox Business Alliance Partners.

Security features of the WorkCentre 7655/7665/7675 series include:

- **802.1x Support** — Ensures devices connected to the network are properly authorized
- **Analog Fax and Network Isolation** — Controller architecture isolates the fax telephone line and the network connection to foil incoming attacks
- **Authentication**
 - **System Administrator Authentication** — The WorkCentre 7655/7665/7675 series allows access to administrative web pages to be restricted to authorized employees. Device Access Password Protection further restricts access to device setup screens and remote network settings
 - **Network Authentication** — Manage access to copy, scan, email, and fax features by validating network user names and passwords
 - **Copy Auditron** — Restricts user access to the device, sets limits for users and groups, tracks jobs and provides reports
- **Firewall** — Restricts access via IP Address Filtering, Domain Filtering, and Port Blocking
- **Image Overwrite Security** — Electronically erases data that has been processed to the hard disk in print, copy, scan, and fax modes using a three-pass algorithm specified by U.S. Department of Defense Directive 5200.28-M at regular, pre-selected times
- **Internal Security Audit Log** — Permits tracking of activity at the device, satisfying the needs of organizations that must provide logging of the transfer of Personally Identifiable Information per regulations like HIPAA, Sarbanes-Oxley, Gramm-Leach-Bliley Act, and more

Common Criteria Certification:

The National Information Assurance Partnership (NIAP) is a U.S. government initiative to meet the security testing of Common Criteria, and is a collaboration between the National Institute of Standards and Technology (NIST) and the National Security Agency (NSA). Common Criteria for IT Security Evaluation is an internationally recognized methodology (ISO 15408) for evaluating the security claims of hardware and software vendors. The five major elements of Common Criteria are availability, integrity, confidentiality, accountability and nonrepudiation.

HOW THE XEROX WORKCENTRE® 7655/7665/7675 SERIES EXCEEDS THE SECURITY CAPABILITIES REQUIREMENT (cont'd)

- **IPv6 Support** — Built-in support for networks utilizing the IPv6 standard
- **Hide Print Job Name in Queue** — Hides or obscures document names when the job queue is viewed from the front panel or via CentreWare IS
- **LDAP Authentication/Secure LDAP** — Adds ability to configure LDAP requests to only people with user IDs are sent to and authenticated by the LDAP server
- **LDAP Filtering** — Prevents unauthorized network access based on IP address or port number
- **Print Channel Encryption** — Delivering secure communication via IPsec
- **Secure Data Protocols** — The WorkCentre 7655/7665/7675 supports HTTPS, enabling CentreWare Internet Services setup via industry standard Secure Sockets Layer (SSL) technology
- **Secure Print** — Unlimited Secure Print holds jobs at the device until the owner releases them with the PIN code
- **Secure Scanning and Network Management** — Includes support for SNMPv3 and HTTPS
- **User Data Encryption** — Files saved to and read from the WorkCentre 7655/7665/7675 series, hard drive are encrypted
- **Xerox Secure Access (optional)** — Smart card-based user authentication for device access



Device usage can be closely tracked with Xerox Standard Accounting features, which can provide audit log reports showing print, copy, scan and fax events with time stamps.

The optional Foreign Device Interface Kit offers access and accounting via magnetic card readers, coin devices, and third-party accounting solutions.

Third Party Testing/Certification

Xerox has a proven track record of participation and compliance with emerging government security standards and third party testing and certification. The prime example of the Xerox commitment is our participation in the Common Criteria Certification process: Xerox submits its products, along with highly structured statements describing the product's information security capabilities, for validation by an independent, government-sponsored laboratory for testing and certification. Certification is a costly, rigorous and time-consuming process — the WorkCentre 7655/7665/7675 series is currently under evaluation. Check the Xerox security pages (www.xerox.com/security) or the Common Criteria Portal (www.niap-ccevs.org), for more up-to-date information. Xerox currently has more MFP products certified than any other vendor in the industry.

EVALUATE

COST CONTROL

One of the most important things to consider when evaluating a device with **color capabilities** is to understand how you can **track and control color usage**. Does the device charge a premium for black-and-white printing? Can the device **automatically check for black-and-white and color pages**?

ADVANTAGE XEROX

HOW THE XEROX WORKCENTRE® 7655/7665/7675 SERIES EXCEEDS THE COST CONTROL REQUIREMENT

All WorkCentre 7655/7665/7675 series devices separate color and black-and-white page counts to allow for separate billing of these pages.

Color Access Cost Control

Two features have been specifically developed to ensure color and black-and-white copies and prints are accurately accounted for, and that access to walk-up color copying features can be managed.

- **Color Access** — requires a login in order to access color copying while allowing uninterrupted black-and-white copying.
- **Automatic Color Copy** — the devices detect black-and-white and color pages separately in the original source document and print and charge for them at their different rates. In addition, you can select “Black-and-White Only” to copy color documents in black-and-white. These output settings can be assigned as the copy default for these devices to limit color usage and manage costs.
- **Automatic Color Print** — the devices detect black-and-white pages within a print job even with the output selection set to Color. The black-and-white printed pages are then printed and charged at the black-and-white rate.



The Copy Auditron feature can both track and control usage. You can configure the Auditron to limit the number of color pages, black-and-white pages, or both that a particular user or group may use. For example, you can limit certain users to black-and-white only.

In addition to these WorkCentre 7655/7665/7675 management capabilities, Xerox Standard Accounting provides job-based accounting features for greater cost control of printing, copying, faxing and scanning.

Assessment Options

Xerox can help you decrease your overall document costs by optimizing and right-sizing your technology deployment. Three levels of assessment tools and services are available to help you deploy the right mix of equipment to best serve the needs of your environment:



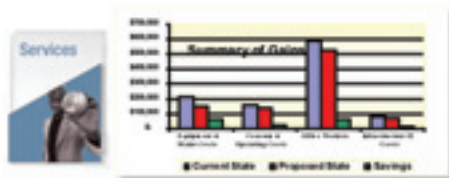
LEVEL 1: Xerox Office Efficiency Calculator

A five-minute, web-based “instant analysis” offers suggestions on your technology needs using information you enter on your environment and accepted industry metrics.

[illegible]

LEVEL 2: Xerox Office Productivity Advisor (XOPA)

More in-depth web-based tool assesses your specific document environment. XOPA results suggest better ways to manage page volume between printing, copying and faxing — delivering end user satisfaction and cost efficiency. XOPA is a free service performed by your local Xerox sales representative.



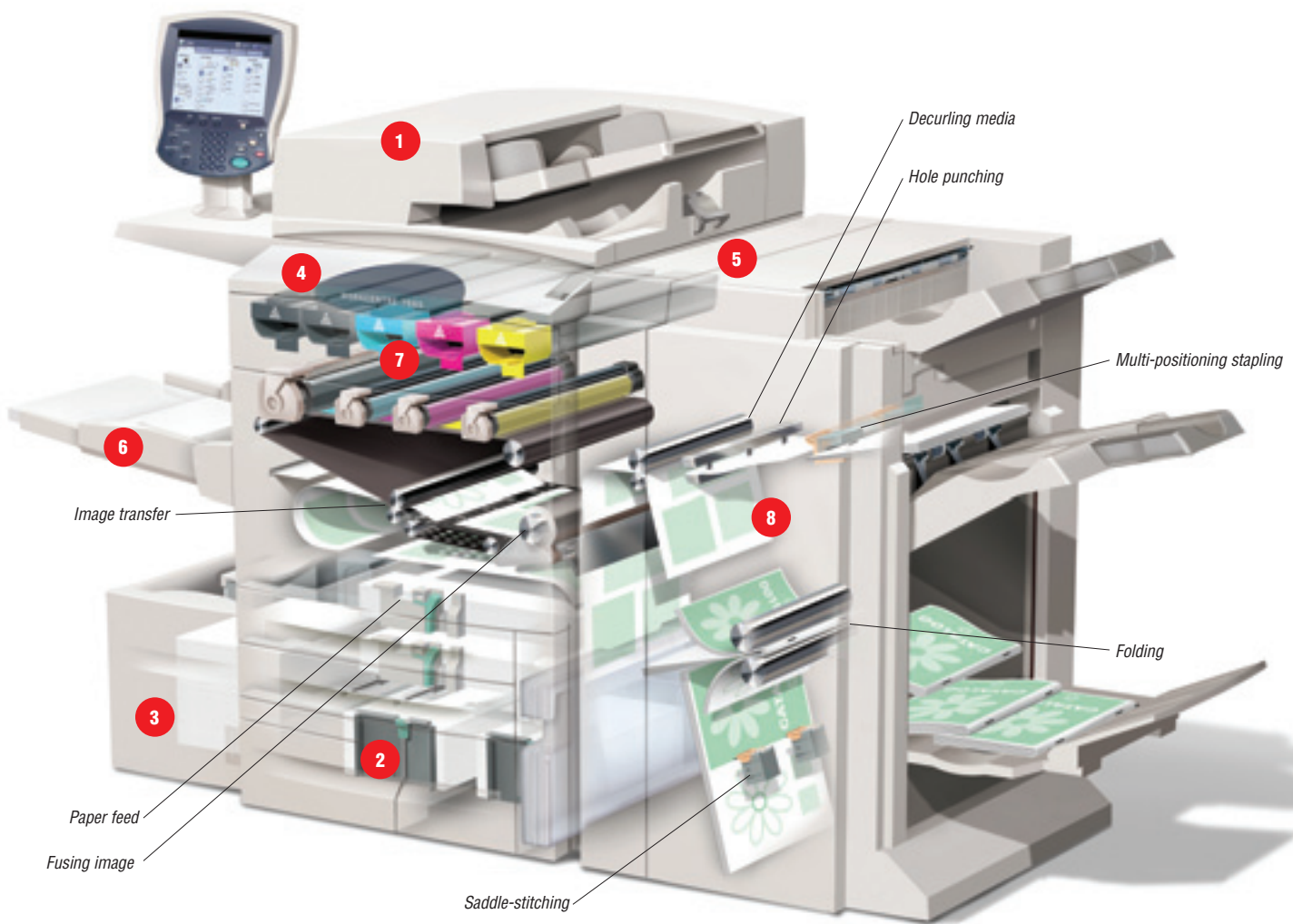
LEVEL 3: Xerox Office Document Assessment (ODA)

An analytical model that measures and analyzes your current document production infrastructure, the ODA provides in-depth improvement plans for significant cost savings and increased efficiency. The ODA is a six-sigma, fee-based tool and consultative service oriented at enterprise-level organizations.

SECTION 3

Inside the WorkCentre 7655/7665/7675 Series

Feature review



1 250-sheet Duplex Automatic Document Feeder (DADF) simplifies the copying and scanning of large jobs.

2 5 standard trays have a total paper capacity of 3,260!

3 Optional high-capacity feeder for those long job runs. Just load and go.

4 Increased toner capacity. Two black toner SMart Kit™ replaceable units keep replenishment interventions to a minimum and productivity to a maximum.

5 Optional finishers (Professional Finisher shown) add the final touches to professional documents.

6 A short, straight paper path prevents jams while providing heavier media feeding capability and increased reliability. Center registered feeding results in accurate registration and less paper skew.

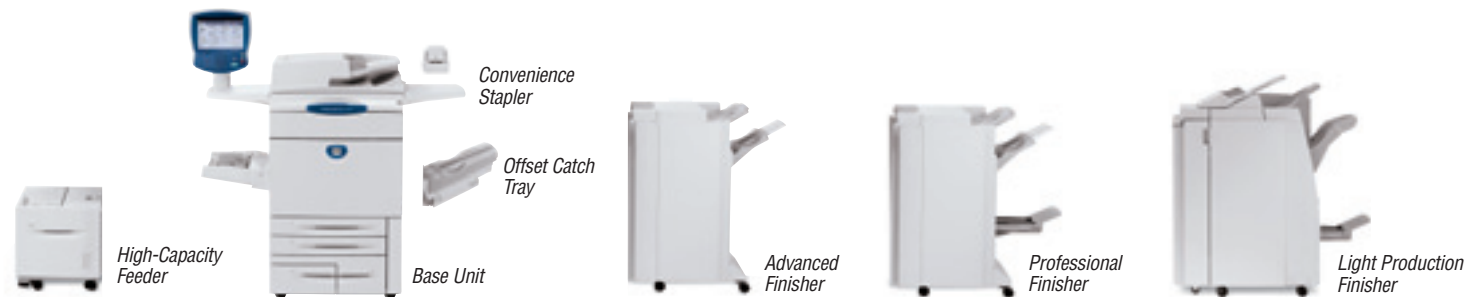
7 Trickle charge development system – unique to Xerox – maintains print consistency all day long. You never have to do a quality check at the eleventh hour.

8 New 2400 dpi resolution delivers excellent image clarity in both prints and copies. Plus, to maintain consistently brilliant image quality, the device employs the new Charge Corotron Cleaning Assembly.

SECTION 4

Configurations, Specifications, Supplies, Support and Additional Information Sources

Configuration summary



Configurations	WorkCentre 7655	WorkCentre 7665	WorkCentre 7675
Speed (Color / Black-and-white)	Up to 55 ppm black-and-white / 40 ppm color	Up to 65 ppm black-and-white / 50 ppm color	Up to 75 ppm black-and-white / 50 ppm color
Duty Cycle	Up to 200,000 pages / month	Up to 300,000 pages / month	Up to 300,000 pages / month
Device Memory	1 GB		
Paper Handling	Duplex Automatic Document Feeder Paper input Standard Trays 1–2: 500 sheets each; Size: Standard sizes up to 11 x 17 in. / A3; Tray 3: 870 sheets; Size: 8.5 x 11 in. / A4; Tray 4: 1,140 sheets; Size: 8.5 x 11 in. / A4; Bypass Tray (Tray 5): 250 sheets; Size: Custom sizes up to 13 x 19 in. / SRA3; Total 3,260 sheets		
	Optional High Capacity Feeder: 2,000 sheets; Size: 8.5 x 11 in. / A4		
Finishing options	Offset Catch Tray (OCT); Advanced Finisher: 500-sheet top tray, 3,000-sheet stacker tray, 2/4- or 2/3-hole punching and 50-sheet multiposition stapling; Professional Finisher with Booklet Maker: 500-sheet top tray, 1,500-sheet stacker tray, 2/4- or 2/3-hole punching, 50-sheet multiposition stapling, saddle-stitch booklet maker, V-folding; Convenience Stapler: 50-sheet stapling; Light Production Finisher: 500-sheet top tray, 2,000-sheet stacker tray, hole punching, 100-sheet multiposition stapling, saddle stitch booklet maker, Bi-folding, 200-sheet post-process interposer, optional Tri- and Z-folding		
Security	Fax Security, Secure Print, Audit Log, Secure Workflows, 802.1x, SNMP V3, Network Authentication, Device Access Password Protection, IP Filtering, Disk Image Overwrite		
Accounting	Internal Auditron, Xerox Standard Accounting (Copy, Print, Scan, Fax, Email), Additional Job Based Accounting Options available		
Copy	As fast as 5.5 seconds black-and-white / 8.9 seconds color		
First-page-out time			
Output resolution	2400 x 2400 dpi		
Hard drive	40 GB (minimum)		
Copy features	Automatic two-sided, auto reduction and enlargement (25%–400%), auto paper select, auto tray switching, mixed-sized originals, booklet creation, image quality enhancements, Build Job, book copying / two-sided book copying, auto color selection, transparencies, booklet creation, multi-up, invert image, covers, annotation and Bates™ stamping (with color capability), inserts and tab copying, sample set and job storage, heavy-weight paper		
Print			
Processor / PDL Support	1.8 GHz Athlon™ / PCL® 5c, PCL 6 emulation, PostScript® 3™ language support, PDF v1.5		
Connectivity	10/100 Base T Ethernet		
Output resolution	2400 x 2400 dpi		
Hard drive	80 GB (minimum)		
Print features	Delay-, sample- and secure-print; simultaneous rip, receive, program-ahead, queue-process and transmit; bi-directional print drivers; page-level programming; tab printing; embedded web server for remote control/monitor/setup; job monitoring at device and at desktop		
Fax			
Fax options	Walk-Up Fax (one-line and two-line options), LAN Fax, Internet Fax, Network Server Fax		
Scan			
Scan speed (with DADF)	80 ppm black-and-white / 50 ppm color		
Scan options	Network Scanning, Scan to Email, Scan to PC Desktop®, Scan to Mailbox, Scan to searchable PDF, PDF/A and XPS®		
Other Options	Foreign Device Interface, Xerox Copier Assistant, USB 2.0, Xerox Secure Access Unified ID System		

WORKCENTRE 7655/7665/7675 SERIES SPECIFICATIONS

Device Management	Xerox CentreWare Web, Xerox CentreWare IS Embedded Web Server, Novell NDPS/NEPS, Xerox CentreWare for Unicenter TNG, Xerox CentreWare for Tivoli Netware, Xerox CentreWare for HP OpenView
Printer Driver Support	Apple: Mac OS® 8.x, 9.x, OS X, 10.3 and higher, Microsoft: Windows® 2000, Windows XP, Windows 2003 Server, Windows Vista, Novell: NetWare 4.x, 5.x, 6, Unix/Linux: Solaris 2.8/2.9/2.10, HP-UX 11.0, IBM AIX 4.3.3, Linux Fedora Core 1 (Intel), Linux YellowDog 3.0
Media Handling Supported Sizes	Trays 1 and 2: Standard sizes up to 11 x 17 in. (A3) Trays 3 and 4: 8.5 x 11 in. (A4) Bypass Tray (Tray 5): Custom sizes up to 13 x 19 in. (SRA3) Optional High Capacity Feeder: 8.5 x 11 in. (A4) DADF: Up to 11 x 17 in. (A3)
Supported Weights	Trays 1 through 4: 17 lb. bond to 110 lb. index (64 to 220 gsm) Bypass Tray (Tray 5): 17 lb. bond to 170 lb. index (64 to 300 gsm) Optional High Capacity Feeder: 17 lb. bond to 110 lb. index (64 to 220 gsm) DADF: 16 lb. bond to 100 lb. index (64 to 200 gsm)
Operating Environment	Required Temperature Range: 50° to 90° Fahrenheit (10° to 28° Celsius) Required Relative Humidity: 15% to 85% Sound Power Levels: Operating: 53 dB(A), Standby: 35 dB(A)
Electrical	Power (North America): 110–127 VAC +/- 10%; 50/60 Hz +/- 3%, 20 A Power Consumption: Running – < 1104 watts/hour, Standby – < 285 watts/hour, Low Power Mode – < 218 watts/hour, Auto Off/Sleep Mode – < 23.7 watts/hour Warm Up Times: Warm-up Ready to Copy – < 28 seconds (recovery from sleep), Warm-up Ready to Print – <130 seconds (recovery from sleep), Low Power Recovery – < 20 seconds
Dimensions (Width x Depth x Height)	Offset Catch Tray: 62 x 36.3 x 57 in. (1,573.6 x 921 x 1,460 mm); Weight: 625 lbs. (284.1 kg) Advanced Office Finisher: 82.5 x 36.3 x 57 in. (2,096 x 921 x 1,460 mm); Weight: 786 lbs. (357.3 kg) Professional Finisher: 82.5 x 36.3 x 57 in. (2,096 x 921 x 1,460 mm); Weight: 846 lbs. (384.5 kg) Light Production Finisher: 98 x 36.3 x 57 in. (2,286 x 921 x 1,460 mm); Weight: 909 lbs. (413.2 kg) Light Production Finisher (with Folding): 98 x 36.3 x 57 in. (2,286 x 921 x 1,460 mm); Weight: 1,036 lbs. (470.1 kg)
Certification	FCC Class A Compliant (US), DOC Class A Compliant (Canada), 89/336/EEC (Europe), UL Listed (UL 1950, Third Edition), CB Certified (IEC 60950/EN 60950), 73/23/EEC (Europe), 95/5/EEC (Europe), Energy Star (for 7665/7675 models only)

WORKCENTRE 7655/7665/7675 SERIES SUPPLIES AND OPTIONS

Supplies	Part Number	Description	Capacity
Toner Cartridges	006R01219	Standard Capacity Black Toner Cartridge	Average 30,000 standard pages ¹
	006R01222	Standard Capacity Cyan Toner Cartridge	Average 34,000 standard pages ¹
	006R01221	Standard Capacity Magenta Toner Cartridge	Average 31,000 standard pages ¹
	006R01220	Standard Capacity Yellow Toner Cartridge	Average 34,000 standard pages ¹
	008R12990	Waste Toner Bottle	Average 50,000 impressions ¹
	013R00602	Black Drum Cartridge	WC 7655 – Average 231,000 prints ² WC 7665 – Average 260,000 prints ² WC 7675 – Average 285,000 prints ²
	013R00603	CMY Drum Cartridge	WC 7655 – Average 100,000 prints ² WC 7665 – Average 115,000 prints ² WC 7675 – Average 115,000 prints ²
	013R00604	CC Assembly for Black Toner Cartridge	120,000 impressions
	008R12988	Fuser Assembly (120 V)	200,000 impressions ³
	008R12989	Fuser Assembly (220 V)	200,000 impressions ³
	008R12964	Staple Cartridge	For AOF and Convenience Stapler
	008R12941	Staple Refill	For AOF and Convenience Stapler
	008R12925	Staple Cartridge	For Professional Finisher and Light Production Finisher with Booklet Maker
	008R13029	Staple Cartridge	For Light Production Finisher

¹Average standard pages. Declared Yield based on 5% area coverage on letter/A4-size page. Yield will vary based on image, area coverage and print mode.

²Declared Yield based on letter/A4-size 20 lb. (75 gsm) pages. Yield will vary based on media type, size, weight, and usage patterns.

³Declared Yield based on an average job size of 4 pages. Yield will vary based on job run length, media size and orientation.

WORKCENTRE 7655/7665/7675 SERIES SUPPLIES AND OPTIONS (CONTINUED)

Options	Part Number	Product Code	Description
	497K02420	N/A	Offsetting Catch Tray
	097S03304	VKK	High-Capacity Feeder
	097S03306	VKM	Advanced Office Finisher
	097S03308	VKP	Professional Finisher (with Booklet Maker)
	097S03786	DTX	Light Production Finisher
	097S03620	APA	C-, Z-Folder Unit (for Light Production Finisher)
	498K08250	N/A	Convenience Stapler Kit (110 V)
	498K08260	N/A	Convenience Stapler Kit (220 V)
	098S04886	YRC	Foreign Device Interface Kit
	498K12240	N/A	IOT Mobility Plate
	498K12251	N/A	C-Finisher Mobility Plate
	498K16290	N/A	HCF Mobility Plate
	498K15810	N/A	D-Finisher Mobility Plate

SUPPORT AND ADDITIONAL INFORMATION SOURCES

UNRIVALED SERVICE AND SUPPORT

Behind every Xerox product is a large network of customer support that's unrivaled in the industry and available when you need it. Xerox service professionals use leading-edge technologies to keep you up and running. They're even linked to the engineers who designed your product, so you can be confident when you choose Xerox. And genuine Xerox supplies are always readily available.

TOTAL SATISFACTION GUARANTEED

The exclusive Xerox Total Satisfaction Guarantee, recognized as unique in the industry, covers every WorkCentre device that has been continuously maintained by Xerox or its authorized representatives under a Xerox express warranty or Xerox maintenance agreement. You decide when you're satisfied.

XEROX OFFICE SERVICES SUPPORT

Asset Management Services

- Asset Optimization and Tracking — Process and tools to optimize an enterprise's office output infrastructure and reduce hard costs.
- Break-Fix Management — Single point of ownership and management for break-fix service for all brands of office output devices, regardless of manufacturer
- Supplies Management — Process and tools to procure, monitor and replenish all document-related supplies proactively.

Imaging and Output Management Services

- Output Management — Single point of management of office output from all output devices, regardless of manufacturer
- Image Capture and Workflow — Cost-efficient solutions for capturing, managing, retrieving and distributing information into digital repositories.

Support Services

- Technology Procurement and Deployment — A creative and flexible end-to-end print/computer product acquisition solution that uses a single-point-of-contact model, while lowering the total cost of acquisition.
- Help Desk Services — A broad range of enterprise services, managed through a centralized single point of contact and delivered through either an on-site or off-site model.

- End User Services — Microsoft software implementation, IT project consulting, and customer education.

Access Managed Services

- Student and Library Patron Access — Custom designed and implemented customer-managed solutions for student and library patron print-access management.

ADDITIONAL INFORMATION SOURCES

WorkCentre 7655/7665/7675 series Front Panel:

- The front panel offers tools and information pages to help with machine setup, feature selections, operational problems, media feed and supply issues.

Customer Documentation Contains:

- Installation Guide
- Quick Use Guide
- Software and Documentation CD-ROM
- Registration Card
- Warranty Booklet

On the Web

Visit www.xerox.com/office for:

- Product, supplies and support information
- Downloading drivers
- Finding your local Xerox sales representative
- Online documentation

Visit www.xerox.com/office/support for:

Support and service information, including the same troubleshooting Knowledge Base used by Xerox Customer Support staff to provide the latest technical information on:

- Application issues
- Errors
- Print-quality issues
- Troubleshooting



Questions? Comments? Problems?

If you have any questions,
please contact your Xerox
sales representative, call
1-800-ASK-XEROX or
visit us on the web at
www.xerox.com/office



For 7665/7675
models only