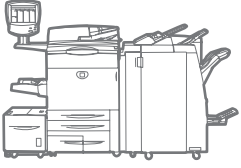


WorkCentre®
7655 / 7665 / 7675
Tabloid-size
Color
Multifunction System



Xerox® WorkCentre®
7655 / 7665 / 7675
Multifunction System
Production performance
with color impact



WorkCentre® 7655 / 7665 / 7675 Multifunction System

Productive, flexible and easy to use. The Xerox WorkCentre 7655 / 7665 / 7675 multifunction devices can easily handle the output volumes needed for document-intensive office environments. Add to that unrivaled, high impact color, and you have the versatility to give your business a clear, competitive edge.

Performance to increase productivity

Why crowd the office with multiple devices when one can meet all your needs? The WorkCentre 7655 / 7665 / 7675 multifunction devices have the features you use everyday and the power to be true multitaskers.

- **Super-fast copy and print speeds up to 75 ppm** enhance productivity regardless of job size or volume. Full color copying and printing is fast – up to 50 ppm!

- **The ability to scan documents at 80 ppm** (50 ppm in color) allows your department to swiftly scan, retrieve, electronically store and distribute documents.
- **Multitasking operation** means multiple users can simultaneously perform different tasks – scan, copy, print, transmit faxes and manage the queue – a helpful feature in maximizing business efficiency.
- **Nothing gets noticed like color.** 2400 x 2400 dpi output resolution with 256 halftones gives your documents unmatched clarity and impact.

Outsourced quality color produced in-house, and under control

- **Get unbelievable image quality** with a resolution of 2400 x 2400 dpi and 256 halftones.
- **Emulsion Aggregate High-Grade toner** delivers a professional glossy finish on documents where impact is the key. Trickle Charge Development (a Xerox innovation) maintains high image quality throughout the job.
- **You only pay for color on pages that use color**, making it more cost-effective to print jobs with mixed color/black-and-white documents.
- **Regulate access to color** to control costs. Allocate color-page limits by user, department, etc.
- **Built-in reporting functions** let you track all services — print, copy, scan, fax and email, as well as color printing and copying — making usage decisions easier in the future.



Add the impact of color to important business documents without expensive outsourcing. Strategic color usage gains readership, makes a stronger first impression, increases memory retention and boosts sales.

WorkCentre® 7655 / 7665 / 7675

Quick Facts

- Print up to 75 ppm black-and-white, 50 ppm color
- True 2400 x 2400 dpi
- Up to 300,000 pages/month duty cycle
- 5,260-sheet maximum paper capacity
- High impact color with extensive control and accounting features
- Security features for demanding office environments

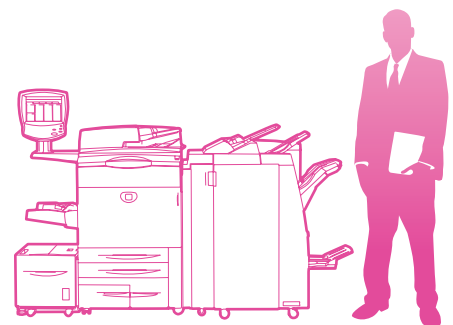


Print / Copy / Scan / Fax / Email

13 x 19 in.

50 ppm color

WxDxH:
62 x 36.3 x 57 in.
1,574 x 921 x 1,460 mm



Versatility from start to finish. Add features and options to the WorkCentre 7655 / 7665 / 7675 to make it the perfect fit for your office.



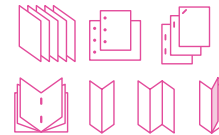
Paper input

- 1 250-sheet Duplex Automatic Document Feeder quickly processes single- or double-sided originals.
- 2 250-sheet bypass Tray adjusts for custom sizes up to 13 x 19 in.

- 3 Two 500-sheet trays are adjustable up to 11 x 17 in.
- 4 2,010-sheet letter-size tandem tray.
- 5 2,000-sheet High-Capacity Feeder (optional) can increase total capacity to 5,260 sheets.

Paper output

- 6 Multiple finishing options let you choose the capabilities that are right for individual workgroups.



Copy

Start with copying. All WorkCentre 7655 / 7665 / 7675 devices start with robust copy capability in black-and-white and brilliant color. Security features and job-based accounting are built-in.

Print / Scan

Add network printing. Make your WorkCentre 7655 / 7665 / 7675 device a lot more productive by networking and adding affordable color printing and scanning.

Fax / Email / Finishing

Do it all. Build an integrated system that includes internet/network faxing, scanning and email capability. Add throughput and finishing options, customized network accounting solutions, and more.

Your processes simplified

- Xerox Extensible Interface Platform™ (EIP) technology — a web-based open platform — lets developers build unique solutions for specific business needs.
- Store scanned documents directly on the device for exact reprint later, while also retaining the flexibility to change document parameters before reprinting.
- Scan to searchable PDF format for universal compatibility and easy archiving, organizing, searching and sharing.
- Scan to Mailbox stores files on the device's hard drive, where they can be printed and deleted or retrieved at a user's desktop.
- Scan to Home allows scanning to preassigned "home" destinations — such as an email address, network folder or FTP directory — for fast document routing at the push of a button.

Keep the work flowing

You need a machine that works the way you do. The WorkCentre 7655 / 7665 / 7675 devices are packed with functionality and options meeting the needs of any environment.

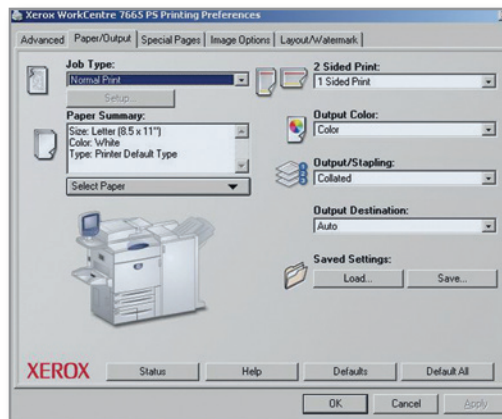
- Started off with a digital copier and need more functionality? No problem. You can **upgrade to a fully-featured advanced multifunction system.**
- **Optional scanning workflows** include Scan to PC Desktop, and scan to searchable PDF, network file server, email, fax and mailboxes on the device. The new Scan to Home feature lets you scan to a secure personal directory.
- **Improved scan export compression** (MRC, JBIG2) reduces traffic on the network and speeds your documents to their destinations.
- **Support for a wide range of paper and specialty media** in weights up to 110 lb. cover, and custom sizes up to 13 x 19 in., so that whatever the application, you're ready to print.
- **Extensive finishing options** are available to increase your productivity, including the Light Production Finisher which adds 100-page stapling, booklet making, post-process page inserting, and optional C- and Z-folding.



Easy from end to end

Running complex jobs doesn't have to be complicated. From the large touchscreen interface and bi-directional print drivers to simple job-based reporting and accounting tools, the WorkCentre 7655 / 7665 / 7675 devices are designed with reliability and ease of use in mind.

- **Installation is quick and easy.** Network administrators can "clone" the configuration for simple installation of multiple units.
- **User intervention is kept to a minimum.** Two black toner cartridges means toner lasts longer and can be replaced on the fly. And Smart Kit™ technology ensures the device is kept up and running.
- **Automatic Information Forwarding** automatically enables the collection and sending of reports to Xerox for quicker and better service.
- **Advanced device management** software makes it easier to ensure your system is running smoothly.
- **Xerox Standard Accounting** software provides job-based accounting features for greater cost control of printing, copying, faxing and scanning.
- **The Smart eSolutions** system simplifies ownership, with hands-free, hassle-free, secure administration of Xerox devices for automatic meter reads.



Intuitive, bidirectional print drivers provide easy access to all output functions.

The WorkCentre 7655/7665/7675 multifunction devices incorporate some of the strongest security features in the industry, ensuring that your document production workflow, often overlooked in security checks, is well-protected. We built in the latest network security features, such as tight integration with email security systems, embedded fax functionality which isolates the fax system from other network functions, and detailed remote management and alerts through tools such as CentreWare Web. IT managers will appreciate the ability to create an authentication system that not only restricts access to scanning, email and output from the device, but also provides an audit trail of accountability for all device users.



Security

Robust security features let you restrict access, manage usage and ensure confidentiality.

- **Network Authentication** restricts access to scan, email and network fax features by validating user names and passwords prior to use. With Audit Log capabilities you'll know who sent what and when.
- **Secure Print** prevents unauthorized viewing by holding jobs in the queue until a PIN is entered, releasing documents to print. Secure Print job submission utilizes IPsec.
- **Image Overwrite** eradicates data by overwriting the disk surface with patterns of data.
- **Embedded Fax** prevents unauthorized device access via the fax subsystem. There is complete separation of the fax telephone line and the network connection.
- **Device Access Password Protection** ensures administrative set-up screen and remote network settings cannot be viewed or altered without authentication.
- **IP Address Restriction** (IP Filtering) controls communications with specific network clients. Operates in IPv4 and IPv6 environments.
- **Secure Scan** transmits files using HTTPS (SSL).
- **Secure Device Administration** with HTTPS is enabled through CentreWare.
- **802.1x Port Based Network Access Control** ensures that devices that are connected to the network have the proper authorization.
- **Secure Access Unified ID System** enables users to log-in at the device with their magnetic or proximity ID card for secure access to functions that need to be tracked for accounting or regulatory requirements.

Xerox Extensible Interface Platform™ (EIP). Your work just got easier.

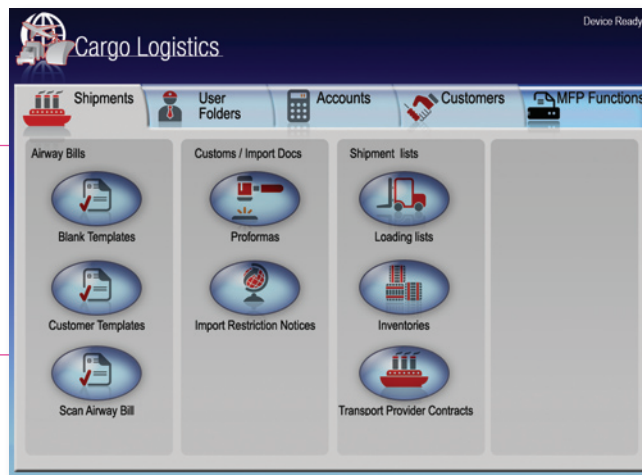
Xerox EIP is a software platform inside the WorkCentre 7655 / 7665 / 7675 multifunction devices that enables personalized solutions you can access right from the device touch screen. These applications can leverage your existing databases and meet your specific business challenges.

Users benefit from simplified and personalized workflows

- Simplify user experience. Swipe your company ID badge at the device, and an EIP solution can present your print jobs, workflows and settings on the touch screen.
- Instead of needing to learn a complex order fulfillment sequence, a new employee simply scans in a paper order, presses a button on the touch screen, and the EIP application correctly routes the document.

Get more out of your hardware and infrastructure investment

- EIP applications can leverage your existing databases and systems. This two-way communication allows you to query your databases and choose the appropriate customer or project folder when storing a scanned document.
- Reduce abandoned print jobs and increase productivity. Send documents to a virtual queue and an EIP application can let you log onto any available device on the network to print your job.



IT professionals enjoy ease of integration

- Managing applications across a fleet of devices is easy. Make updates at the server level and those changes become live on all EIP-devices on the network, regardless of location or product model, eliminating the need to load software on each individual device.
- With the WorkCentre 7655/7665/7675 multifunction devices, administrators can use active directory to provide various departments and groups access to certain features, EIP applications and personalized scanning workflows.

In-house developers can tailor applications to address unique needs

- Build user-friendly touch screen interfaces that work the way your business works.
- EIP is based on web standards such as HTML, CSS, XML and JavaScript, speeding programming and making new application development fast and easy.

WorkCentre® 7655 / 7665 / 7675



	WorkCentre 7655	WorkCentre 7665	WorkCentre 7675												
Speed	Up to 55 ppm black-and-white / 40 ppm color	Up to 65 ppm black-and-white / 50 ppm color	Up to 75 ppm black-and-white / 50 ppm color												
Duty Cycle	200,000 pages / month	300,000 pages / month	300,000 pages / month												
Paper Handling	<table border="1"> <tr> <td>Paper input</td> <td>Standard</td> <td colspan="2"> Duplex Automatic Document Feeder: 250 sheets Trays 1–2: 500 sheets each; Size: Standard selectable sizes up to 11 x 17 in. / A3 Tray 3: 870 sheets; Size: 8.5 x 11 in. / A4 Tray 4: 1,140 sheets; Size: 8.5 x 11 in. / A4 Bypass Tray (Tray 5): 250 sheets; Size: Custom sizes up to 13 x 19 in. / SRA3; Total: 3,260 sheets </td> </tr> <tr> <td></td> <td>Optional</td> <td colspan="2"> High Capacity Feeder: 2,000 sheets; Size: 8.5 x 11 in. / A4; Total: 5,260 sheets </td> </tr> <tr> <td>Paper output</td> <td>Optional</td> <td colspan="2"> Offset Catch Tray (OCT) Advanced Finisher: 500-sheet top tray, 3,000-sheet stacker tray, 2/4- or 2/3-hole punching and 50-sheet multiposition stapling Professional Finisher with Booklet Maker: 500-sheet top tray, 1,500-sheet stacker tray, 2/4- or 2/3-hole punching, 50-sheet multiposition stapling, saddle-stitch booklet maker, bi-folding Light Production Finisher: 500-sheet top tray, 2,000-sheet stacker tray, hole punching, 100-sheet multiposition stapling, saddle-stitch booklet maker, bi-folding, 200-sheet post-process interposer, optional C- and Z-folding Convenience Stapler: 50-sheet stapling </td> </tr> </table>			Paper input	Standard	Duplex Automatic Document Feeder: 250 sheets Trays 1–2: 500 sheets each; Size: Standard selectable sizes up to 11 x 17 in. / A3 Tray 3: 870 sheets; Size: 8.5 x 11 in. / A4 Tray 4: 1,140 sheets; Size: 8.5 x 11 in. / A4 Bypass Tray (Tray 5): 250 sheets; Size: Custom sizes up to 13 x 19 in. / SRA3; Total: 3,260 sheets			Optional	High Capacity Feeder: 2,000 sheets; Size: 8.5 x 11 in. / A4; Total: 5,260 sheets		Paper output	Optional	Offset Catch Tray (OCT) Advanced Finisher: 500-sheet top tray, 3,000-sheet stacker tray, 2/4- or 2/3-hole punching and 50-sheet multiposition stapling Professional Finisher with Booklet Maker: 500-sheet top tray, 1,500-sheet stacker tray, 2/4- or 2/3-hole punching, 50-sheet multiposition stapling, saddle-stitch booklet maker, bi-folding Light Production Finisher: 500-sheet top tray, 2,000-sheet stacker tray, hole punching, 100-sheet multiposition stapling, saddle-stitch booklet maker, bi-folding, 200-sheet post-process interposer, optional C- and Z-folding Convenience Stapler: 50-sheet stapling	
Paper input	Standard	Duplex Automatic Document Feeder: 250 sheets Trays 1–2: 500 sheets each; Size: Standard selectable sizes up to 11 x 17 in. / A3 Tray 3: 870 sheets; Size: 8.5 x 11 in. / A4 Tray 4: 1,140 sheets; Size: 8.5 x 11 in. / A4 Bypass Tray (Tray 5): 250 sheets; Size: Custom sizes up to 13 x 19 in. / SRA3; Total: 3,260 sheets													
	Optional	High Capacity Feeder: 2,000 sheets; Size: 8.5 x 11 in. / A4; Total: 5,260 sheets													
Paper output	Optional	Offset Catch Tray (OCT) Advanced Finisher: 500-sheet top tray, 3,000-sheet stacker tray, 2/4- or 2/3-hole punching and 50-sheet multiposition stapling Professional Finisher with Booklet Maker: 500-sheet top tray, 1,500-sheet stacker tray, 2/4- or 2/3-hole punching, 50-sheet multiposition stapling, saddle-stitch booklet maker, bi-folding Light Production Finisher: 500-sheet top tray, 2,000-sheet stacker tray, hole punching, 100-sheet multiposition stapling, saddle-stitch booklet maker, bi-folding, 200-sheet post-process interposer, optional C- and Z-folding Convenience Stapler: 50-sheet stapling													
Copy	First-page-out-time: As fast as 5.5 seconds black-and-white / 8.9 seconds color														
Resolution (max)	2400 x 2400 dpi														
Copy memory	512 MB, 20 GB Hard drive (minimum)														
Copy features	Automatic two-sided, auto reduction and enlargement (25%–400%), auto paper select, auto tray switching, mixed-sized originals, booklet creation, image quality enhancements, Build Job, book copying / two-sided book copying, auto color selection, transparencies, booklet creation, multi-up, invert image, covers, annotation and Bates™ stamping (with color capability), inserts and tab copying, sample set and job storage, heavy-weight paper														
Print	Processor / PDL Support: 1.8 GHz Athlon™ / PCL® 5c, PCL 6 emulation, PostScript® 3™ language support, PDF v1.5														
Connectivity	10/100 Base-TX Ethernet														
Resolution	2400 x 2400 dpi														
Memory	1 GB, 80 GB Hard drive (minimum)														
Print features	Delay, Sample and Secure Print, simultaneous rip, receive, Program Ahead, queue-process and transmit, Bi-directional print drivers, Page-level programming, Tab printing, Embedded Web Server for remote control/monitor/setup, Job monitoring at device and at desktop														
Fax	Optional	Walk-up Fax (one-line and two-line options), LAN Fax, Internet Fax, Network Server Fax													
Scan	Optional	Network scanning, Scan to email, Scan to PC Desktop®, Scan to Mailbox, Scan to searchable PDF, PDF/A and XPS®													
Other Options	Foreign Device Interface, Xerox Copier Assistant, USB 2.0, Xerox Secure Access Unified ID System														
Security	Fax Security, Secure Print, Audit Log, Secure Workflows, 802.1x, SNMP V3, Network Authentication, Device Access Password Protection, IP Filtering, Disk Image Overwrite														
Accounting	Internal Auditor, Xerox Standard Accounting (Copy, Print, Scan, Fax, Email), Additional Job Based Accounting Options available														



For more information, call 1-800-ASK-XEROX or visit us at www.xerox.com/office



© 2009 Xerox Corporation. All rights reserved. Xerox®, CentreWare®, WorkCentre®, Scan to PC Desktop®, Walk-Up®, Smart Kit™ and the sphere of connectivity design are trademarks or registered trademarks of Xerox Corporation in the United States and other countries. Adobe® and PostScript® 3™ are trademarks or registered trademarks of Adobe, Inc. XPS® is a registered trademark of Microsoft Corporation. PCL® is a registered trademark of Hewlett-Packard. As an ENERGY STAR® partner, Xerox Corporation has determined that these products meet the ENERGY STAR guidelines for energy efficiency (All models except WorkCentre 7655). The ENERGY STAR name and logo are registered U.S. trademarks. Terra Choice Environmental Services, Inc. of Canada has verified that this Xerox product conforms to all applicable Environmental Choice EcoLogo requirements for minimized impact to the environment. The information in this brochure is subject to change without notice. 6/09 610P724900H W65BR-01U1