

June 25, 2018



# Xerox<sup>®</sup> XML Configuration Editor for Print Drivers Customer Tip



© 2011-2018 All rights reserved. Xerox®, Xerox and Design®, WorkCentre®, ColorQube®, Mobile Express Driver®, and Global Print Driver® are trademarks of Xerox Corporation in the United States and/or other countries.

BR6464

dc11cc0474

Other company trademarks are also acknowledged.

Document Version: 27.0 (June 2018)

# Table of Contents

Purpose.....	1
New for XML Editor V3.7.21 .....	1
Prerequisites/Assumptions.....	1
Software Availability .....	2
Defaults.....	2
Properties Window .....	5
List of Commonly Used Features and Values .....	8
Creating Registry Entry .....	10

# Purpose

The Xerox® XML Configuration Editor for Print Drivers provides systems administrators with a convenient way to visually manage driver configurations for Xerox printing devices without having to touch the underlying XML. The editor will create a commonly used feature configuration file which will allow the administrator to override any default from within a predetermined set of features and settings for Xerox® v3 and v4 driver types (Traditional print drivers, Global Print Driver®, Mobile Express Driver® (available in V3 only) and Pull Print Driver). Configuring Xerox® v4 drivers requires the Xerox® Desktop Print Experience application. This commonly used feature set supports pre and post installation default updates.

## New for XML Editor V3.7.21

- This version of the XML Editor supports both the V3 drivers as well as the V4 drivers (including the V4 Xerox Global Print Driver).
- Xerox Internal defects were resolved in this version of the XML Editor.
- No new features were added to the Editor.

## Prerequisites/Assumptions

- The new version of the editor (v3.7.21) was released in conjunction with
  - Xerox® Windows v3 Print Driver version 5.617.70
  - Xerox® Windows v4 Print Driver version 7.59.0
    - Xerox Print Experience WSDA (Store app) 7.48.10
    - Xerox Desktop Print Experience 7.48.9
- You may confirm the version of XML editor you are using by clicking on the Xerox logo within the application. Although this editor can be used with older releases, not all features are supported.
- When configuring a Xerox® Windows v4 Print Driver the Xerox Desktop Print Experience, version 7.48.9 or higher must be installed.
- To run this application, the workstation must include Microsoft® .NET Framework version 4.0.30319 or greater.
  - When running this application on a Windows 7sp1 client the Microsoft® .NET Framework version must be at 4.5.1.
- This document assumes that the user has successfully run the installer to extract the executable and placed it in a known location.

# Software Availability

The software is available from

<http://www.support.xerox.com/support/global-printer-driver/file-download/enus.html?contentId=116479>

## Defaults

The Xerox® XML Configuration Editor for Print Drivers allows the administrator to select which features are configured within the driver. For some of the features there are three selections that control how the setting(s) is enforced. They are:

### **Enforced Settings**

Enforced settings allow an administrator to supply a default value that will not be allowed to be overridden by the user, including within applications. This is the most restrictive level of enforcement.

### **Enforced Defaults**

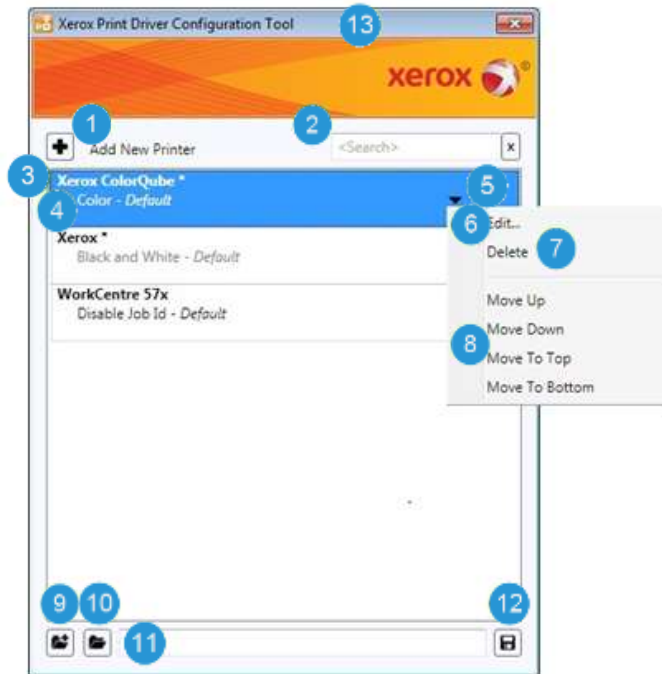
Enforced defaults allow an administrator to supply a default value that cannot be overridden by the user within Printing Preferences in the Printers and Fax folder. The user may change feature(s) while using an application.

### **Standard Defaults (Listed as Default in pull-down menu)**

Standard defaults are settings defined as recommended by the administrator for the feature. These defaults may be overridden in the application and/or within Printing Preferences in the Printers and Fax folder. Changes cannot be made in Printer Properties/Printing Defaults. This is the least restrictive setting.

# Basic Adding/Editing Configuration Settings

The following image shows various aspects of the configuration editor's main window.



## 1 Add New Printer

Invokes the XML Properties dialog allowing the user to define one or more new printer models and their configuration settings. Newly created printer model configuration items will be appended to the list as shown above.

## 2 Search

Allows a user to enter text for the purpose of filtering the list of model configurations to show only those model configurations that have the specified text. The search text will be matched against printer model names in the list as well as any of the settings displayed in the list. Search terms are separated by spaces. The filtering is performed when the <Enter> key is pressed within this text box. Matches are only identified if all search terms are present in the model configuration list item.

## 3 Printer Model Name

This can be the name of a specific printer model or it may contain any number of wildcard characters \* anywhere in the string to match multiple printer models with a similar name. The order of these printer model configurations in the list is significant. If two or more configurations apply to a printer model then the configuration settings encountered first in the list will override any conflicting settings lower in the list.

#### 4 Configuration Settings

These are the settings that are associated with the printer model name. To help alert users to conflicting settings between printer model configurations as describe in #3 above, conflicting settings will be gray rather than black. The user can choose to address this situation at their discretion by:

- Reordering the items in the list
- Changing or adding printer model configurations
- Doing nothing at all with the realization that some settings may not be applied in all cases.

You can see in the above image that the **Xerox ColorQube\* Color-Default** setting conflicts with the **Xerox\* Black and White – Default** settings below it. Since **Xerox ColorQube\*** appears higher in the list the Xerox ColorQube devices will have the default value of color instead of the default value of black and white. Consequently, if **Xerox\*** was moved up to the top of the list **Xerox ColorQube\*** would no longer be color it would be black and white.

#### 5 Model Configuration Menu

Contains selections allowing a user to edit, delete, or move items in the list

#### 6 Edit

While individual model configurations can be edited in the XML Properties dialog simply by double-clicking on an item in the list, this menu selection is the only way to edit multiple selected items simultaneously. It can be used for single selections as well. Multiple selection of items in the list is done by holding down the [Ctrl] key and selecting the desired model configurations.

#### 7 Delete

This is used to permanently remove model configurations from the list. It can be done for single selections as well as multiple selections. Multiple selection of items in the list is done by holding down the [Ctrl] key and selecting the desired model configurations. The [Delete] key serves the same purpose.

#### 8 Move Selections

Allows a user to move printer model configurations up and down in priority. In the event of conflicting settings, items higher in the list take precedence over items lower in the list. This works only for single items and multiple select items as long as they are continuous (i.e. no unselected model configurations in between) otherwise, the move selections are disabled.

#### 9 New

Clears the current list of printer model configurations and prompts to save, if any changes have been made. It also clears the current configuration file path.

#### 10 Load

Loads an existing configuration file. If a file has already been loaded the user will be prompted to save the current file before the new one is loaded.

### 11 Configuration File Path

Path of the most recently loaded/saved configuration file.

### 12 Save

Creates a common configuration file with the current values. The **driver requires that the commonly used configuration file is named “CommonConfiguration.xml”**. To address the possible desire to define multiple configuration files, each file would need to reside in a different folder.

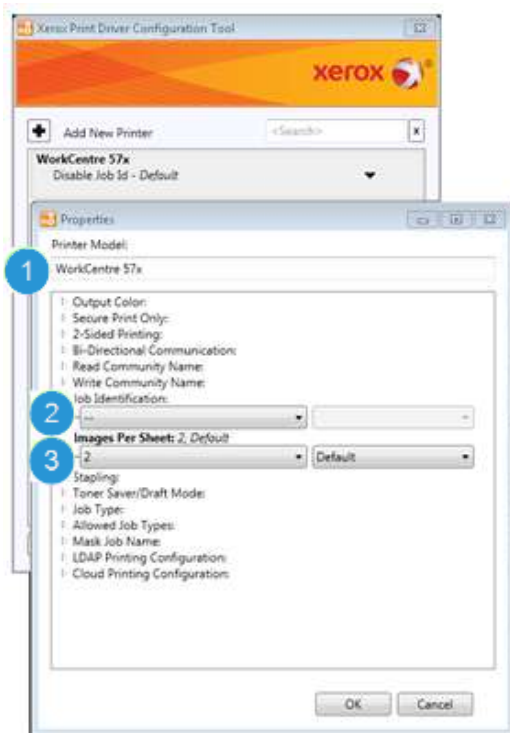
Note: XML configuration will not work correctly if the name of the CommonConfiguraiton.xml file is changed.

### 13 About

Clicking on the orange Xerox Banner opens an “About” window that includes copyright and editor software version number.

## Properties Window

The following image shows the XML Properties dialog as it appears when the user has selected the “Add New Printer” button or has chosen a single printer model configuration to edit. Within this dialog the user has the ability to add/edit/remove configuration settings for a printer model.





## 1 Printer Model

Upon opening the dialog, this text box initially shows the currently selected printer model name for an edit operation or is empty if creating a new printer model configuration. The user can:

- rename an existing printer model
- enter one or more new printer model names, separated by semicolons (;) or commas (,).

If editing an existing printer model and the printer model is renamed in this dialog, the first printer model name in the text box is considered to be the model being edited. Any additional printer models specified will be treated as new and added to the bottom of the printer model configurations list. The edited printer model will retain its order in the printer model configurations list.

**Hint:** Specifying multiple printer model names in this field is a quick way to add a number of identical configurations at one time, or make copies of an existing printer model configuration with different printer model names.

## 2 Settings Not Set

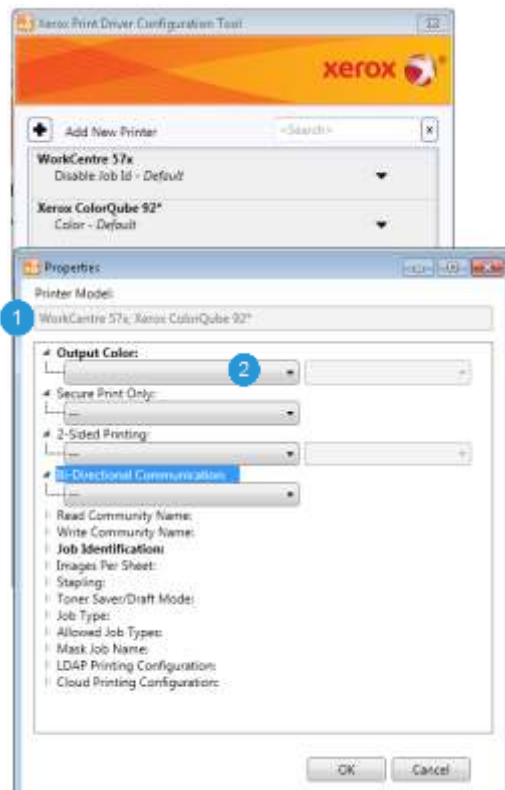
Configuration settings that are not set are indicated by two dashes (--). In this example, Job Identification is not set.

## 3 Setting Restrictions

The dropdown to the right of the configuration setting identifies the type of restriction: "Default", "Enforced Default" or "Enforced Setting". Not all settings have a restriction type.

# Editing Configuration Settings for Multiple Selected Printer Models

The following image shows the Properties dialog as it appears when the user has selected multiple printer models to edit. Within this dialog, the user can add/edit configuration settings that will affect all selected printer models.



## 1. Printer Model

When editing multiple printer model configurations, the selected printer models are displayed. The printer model names are read-only.

## 2. Settings That Differ from Selected Printer Models

Settings that differ between selected printer models are displayed without a value in the drop down. This signifies that each printer model configuration will retain its original value unless the user changes the setting. All selected printer model configurations will be set to the new value.

## 3. Settings That are the Same Between Selected Printer Models

Settings that are the same between all selected printer model configurations will have the current value displayed. Any changes made to these settings will apply to all selected printer model configurations.

# List of Commonly Used Features and Values

**Important:** Features delineated with **(v3)** are not applicable to the Xerox® v4 drivers and Xerox® Desktop Print Experience application.

<ol style="list-style-type: none"> <li>1. Output Color           <ul style="list-style-type: none"> <li>• Color</li> <li>• Black and White</li> </ul> </li> <li>2. Enforced Black and White Synchronization           <ul style="list-style-type: none"> <li>• Enabled</li> <li>• Disabled</li> </ul> </li> <li>3. Secure Print Only           <ul style="list-style-type: none"> <li>• Enabled</li> <li>• Disabled</li> </ul> </li> <li>4. 2-Sided Printing           <ul style="list-style-type: none"> <li>• 1-Sided Print</li> <li>• 2-Sided Print</li> <li>• 2-Sided Print, Flip on Short Edge</li> <li>• 2-Sided Any</li> </ul> </li> <li>5. <b>(v3)</b> Image Compression           <ul style="list-style-type: none"> <li>• Disabled</li> <li>• Recommended Reduction/Best PQ</li> <li>• Good Reduction/Acceptable PQ</li> <li>• Max Reduction</li> </ul> </li> <li>6. Bi-Directional Communication           <ul style="list-style-type: none"> <li>• Disable Job Notification</li> <li>• Enable Job Notification</li> <li>• Disable BiDi</li> </ul> </li> <li>7. Read Community Name</li> <li>8. <b>(v3)</b> Write Community Name</li> <li>9. Job Identification           <ul style="list-style-type: none"> <li>• Disable Job Id</li> <li>• Print ID on a Banner Sheet</li> <li>• Print ID in Margins - First Page Only</li> <li>• Print ID in Margins - All Pages</li> </ul> </li> </ol>	<ol style="list-style-type: none"> <li>10. Images Per Page           <ul style="list-style-type: none"> <li>• 1</li> <li>• 2</li> <li>• 4</li> <li>• 6</li> <li>• 9</li> <li>• 16</li> </ul> </li> <li>11. Stapling           <ul style="list-style-type: none"> <li>• None</li> <li>• 1 Staple</li> </ul> </li> <li>12. Toner Saver/Draft Mode           <ul style="list-style-type: none"> <li>• Off</li> <li>• On</li> </ul> </li> <li>13. Job Type           <ul style="list-style-type: none"> <li>• Normal Print</li> <li>• Secure Print</li> <li>• Delay Print</li> <li>• Store File in Folder</li> <li>• <b>(v3)</b> Fax</li> <li>• Personal Print</li> <li>• Proof Print / Sample Set</li> <li>• Saved Job</li> <li>• Print With</li> <li>• Hold Job</li> <li>• Saved Background Form</li> </ul> </li> </ol>	<ol style="list-style-type: none"> <li>14. Allowed Job Types           <ol style="list-style-type: none"> <li>A. Normal Print               <ul style="list-style-type: none"> <li>• Enabled</li> <li>• Disabled</li> </ul> </li> <li>B. Secure Print               <ul style="list-style-type: none"> <li>• Enabled</li> <li>• Disabled</li> </ul> </li> <li>C. Delay Print               <ul style="list-style-type: none"> <li>• Enabled</li> <li>• Disabled</li> </ul> </li> <li>D. Store File in Folder               <ul style="list-style-type: none"> <li>• Enabled</li> <li>• Disabled</li> </ul> </li> <li>E. <b>(v3)</b> Fax               <ul style="list-style-type: none"> <li>• Enabled</li> <li>• Disabled</li> </ul> </li> <li>F. Personal Print               <ul style="list-style-type: none"> <li>• Enabled</li> <li>• Disabled</li> </ul> </li> <li>G. Proof Print / Sample Set               <ul style="list-style-type: none"> <li>• Enabled</li> <li>• Disabled</li> </ul> </li> <li>H. Saved Job               <ul style="list-style-type: none"> <li>• Enabled</li> <li>• Disabled</li> </ul> </li> <li>I. Print With               <ul style="list-style-type: none"> <li>• Enabled</li> <li>• Disabled</li> </ul> </li> <li>J. Hold Job               <ul style="list-style-type: none"> <li>• Enabled</li> <li>• Disabled</li> </ul> </li> <li>K. Saved Background Form               <ul style="list-style-type: none"> <li>• Enabled</li> <li>• Disabled</li> </ul> </li> </ol> </li> </ol>
---	---	---

<p>15. (v3) Mask Job Name</p> <ul style="list-style-type: none"> <li>• Enabled</li> <li>• Disabled</li> </ul> <p>16. (v3) LDAP Printing Configuration</p> <p>A. LDAP Printing Setting</p> <ul style="list-style-type: none"> <li>• Enabled</li> <li>• Disabled</li> </ul> <p>B. LDAP Printing Authentication</p> <ul style="list-style-type: none"> <li>• None</li> <li>• LDAP Server</li> <li>• Domain</li> </ul> <p>C. LDAP Printing Prompt</p> <ul style="list-style-type: none"> <li>• For Every Job</li> <li>• After Authentication Expires</li> </ul> <p>D. LDAP Printing Expiration</p> <ul style="list-style-type: none"> <li>• Never</li> <li>• After Every Job</li> <li>• After User Login</li> <li>• 1 minute</li> <li>• 5 - 45 minutes (increments by 5 minutes)</li> <li>• 1 – 24 Hours (increments by 1 hour)</li> </ul> <p>E. Primary Host</p> <ul style="list-style-type: none"> <li>• [Entry]</li> </ul> <p>F. Primary Port</p> <ul style="list-style-type: none"> <li>• 1- 65535</li> </ul> <p>G. Secondary Host</p> <ul style="list-style-type: none"> <li>• [Entry]</li> </ul> <p>H. Secondary Port</p> <ul style="list-style-type: none"> <li>• 1-65535</li> </ul> <p>I. Search Directory</p> <ul style="list-style-type: none"> <li>• [Entry]</li> </ul> <p>J. Search Attribute</p> <ul style="list-style-type: none"> <li>• [Entry]</li> </ul> <p>K. Return Attribute</p> <ul style="list-style-type: none"> <li>• [Entry]</li> </ul>	<p>17. Feature Support</p> <p>A. Saved Settings</p> <ul style="list-style-type: none"> <li>• Enabled</li> <li>• Disabled</li> </ul> <p>18. (v3) Xerox Mobile Print Configuration (Supported with Mobile Express Driver)</p> <p>A. Xerox Mobil Print Setting</p> <ul style="list-style-type: none"> <li>•Enabled</li> <li>•Disabled</li> </ul> <p>B. Common Login URL</p> <ul style="list-style-type: none"> <li>•[Entry]</li> </ul> <p>C. Company Code</p> <ul style="list-style-type: none"> <li>•[Entry]</li> </ul> <p>D. Cloud Timeout (In Seconds)</p> <p>1 – 65535</p> <p>19. (v3) TrueType Font</p> <ul style="list-style-type: none"> <li>• Substitute with Device Font</li> <li>• Download as Soft Font</li> </ul> <p>20. Xerox Pull Print Configuration</p> <p>A. Paper Trays</p> <ul style="list-style-type: none"> <li>• 2 Trays</li> <li>• 3 Trays</li> <li>• 4 Trays</li> <li>• 5 Trays</li> <li>• 6 Trays</li> <li>• 7 Trays</li> </ul> <p>B. Stapler</p> <ul style="list-style-type: none"> <li>• 1 and 2 Stapler Installed</li> <li>• 1, 2 and 4 Staple Installed</li> </ul> <p>C. Hole Punch Module</p> <ul style="list-style-type: none"> <li>• Not Installed</li> <li>• 2 Hole Punch Unit</li> <li>• 2 and 3 Hole Punch Unit</li> <li>• 2 and 4 Hole Punch Unit</li> <li>• 3 Hole Punch Unit</li> <li>• 4 Hole Punch Unit</li> </ul> <p>D. Booklet Module</p> <ul style="list-style-type: none"> <li>• Not Installed</li> <li>• Installed</li> </ul> <p>E. Productivity Pack</p> <ul style="list-style-type: none"> <li>• Not Installed</li> <li>• Installed</li> </ul> <p>F. Envelope Media</p> <ul style="list-style-type: none"> <li>• Disabled</li> <li>• Enabled</li> </ul>	<p>21. Print Quality</p> <ul style="list-style-type: none"> <li>• Automatic</li> <li>• Enhanced</li> <li>• Fast Color</li> <li>• High Quality</li> <li>• High Resolution</li> <li>• High Speed</li> <li>• Photo Mode</li> <li>• Standard</li> <li>• Toner Saver</li> </ul> <p>22. Rotate Image 180 Degree Configuration</p> <p>A. Intelligent 180 Degree Rotation</p> <ul style="list-style-type: none"> <li>• Enabled</li> <li>• Disabled</li> </ul> <p>B. Subsequent 180 Degree Rotation</p> <p>C. Subsequent Rotation Settings</p> <ul style="list-style-type: none"> <li>• Enabled</li> <li>• Disabled</li> </ul> <p>D. Paper Size – Subsequent Rotation Print Settings</p> <ul style="list-style-type: none"> <li>• Short Edge Feed Sizes</li> <li>• All Paper Sizes</li> <li>• A list of individual paper sizes</li> </ul> <p>E. Orientation – Subsequent Rotation Print Settings</p> <ul style="list-style-type: none"> <li>• Portrait Page</li> <li>• Landscape Page</li> <li>• Portrait and Landscape Page</li> </ul>
--	---	--

# Creating Registry Entry

A registry entry that specifies the location of the configuration file, is the key to allowing administrators to configure drivers without breaking the Microsoft WHQL certification. The Xerox XML methodology supports the following print configurations:

- **Server/Client**

The XML Registry keys are configured on a Print Server. The XML settings are applied to the server print queue and then are propagated to end users' workstations (client).

**Note:** The time it takes to propagate print drivers and their settings from the Print Server to the Client may vary. Xerox does not have control over the propagation; it is controlled by the Operating System.

- **Client Only**

XML Registry keys are configured on a local workstation. The XML settings are applied to a single workstation. There is no propagation.

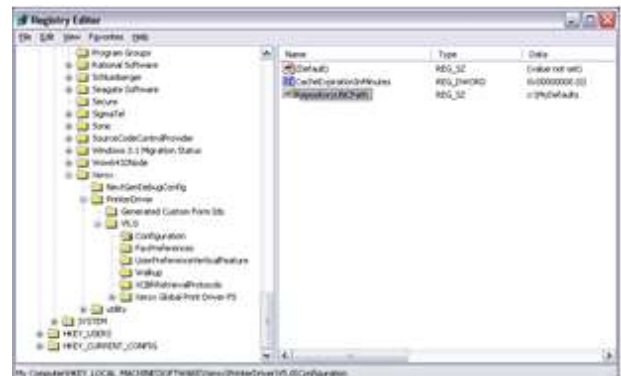
**Caution:** Before proceeding with these changes, Xerox highly recommends that the registry be backed up and the changes be tested in each unique environment prior to rollout. Xerox Corporation is not responsible for any changes you may make to your operating system.

1. Open up your operating system's Registry Editor.
2. Go to the following location within the registry:  
[HKEY\_LOCAL\_MACHINE  
Software\Xerox\PrinterDriver\V5.0\]

3. Create a new **Key** called **Configuration**.

The registry key should now be  
[HKEY\_LOCAL\_MACHINE  
Software\Xerox\PrinterDriver\V5.0\Configuration]

4. Within the Configuration folder create a new **String Value** with the following name:  
**RepositoryUNCPath**



In the 'Value data' field enter the path to the file server's share or local pc's folder containing the configuration file. For example: **C:\MyDefaults** or [\\file-server\shared\\_folder](#)

**Note:** The RepositoryUNCPath should not include "CommonConfiguration.xml" at the end of it.

5. Within the Configuration folder the Administrator can create an **optional DWORD Value** with the name **CacheExpirationInMinutes**

If the **CacheExpirationInMinutes** key is not created the default is set to 1440 minutes (24 hours). If the **CacheExpirationInMinutes** key is set to 0 (zero) the driver will check the configuration every time printer properties are accessed.

**Note:** If the default value is set to zero, each time the print dialog is invoked the XML is queried, which may affect driver response.

6. Exit the windows registry.

## Common Questions regarding CacheExpirationInMinutes:

**Question:** Does CacheExpirationInMinutes impact XML when configuring a Xerox® V4 print drivers?

**Answer:** The CacheExpirationInMinutes value has no effect on the Xerox® v4 drivers and Xerox® Desktop Print Experience application.

**Question:** Is XML invoked every time the Xerox® V3 print driver properties is opened regardless of if the CacheExpirationInMinutes setting is configured?

**Answer:** The first time the Xerox® V3 print driver reads the CommonConfiguration.xml file from the RepositoryUNCpath it will load all the values from the file and update in the cache. The driver will read from the cache until the Cache Expiration In Minutes value times out. If the configuration file is modified prior to the cache expiration, the cache is automatically updated.

**Question:** Does the “timer” for CacheExpirationInMinutes restart each time the Xerox® V3 print driver is invoked?

**Answer:** No. Cache expiration time starts when the print dialog is invoked and stores this time in registry. If the cache is updated in between (due to an update to the configuration file), the expiration time is initialized again.

**Question:** Does XML ever run as a background process when configuring the Xerox® V3 print driver?

**Answer:** No.

**Question:** Does XML ever run as a background process when configuring the Xerox® V4 print driver?

**Answer:** Yes, when exiting device properties due to a change in printer model or port. It only runs for a few seconds.