

XEROX[®]

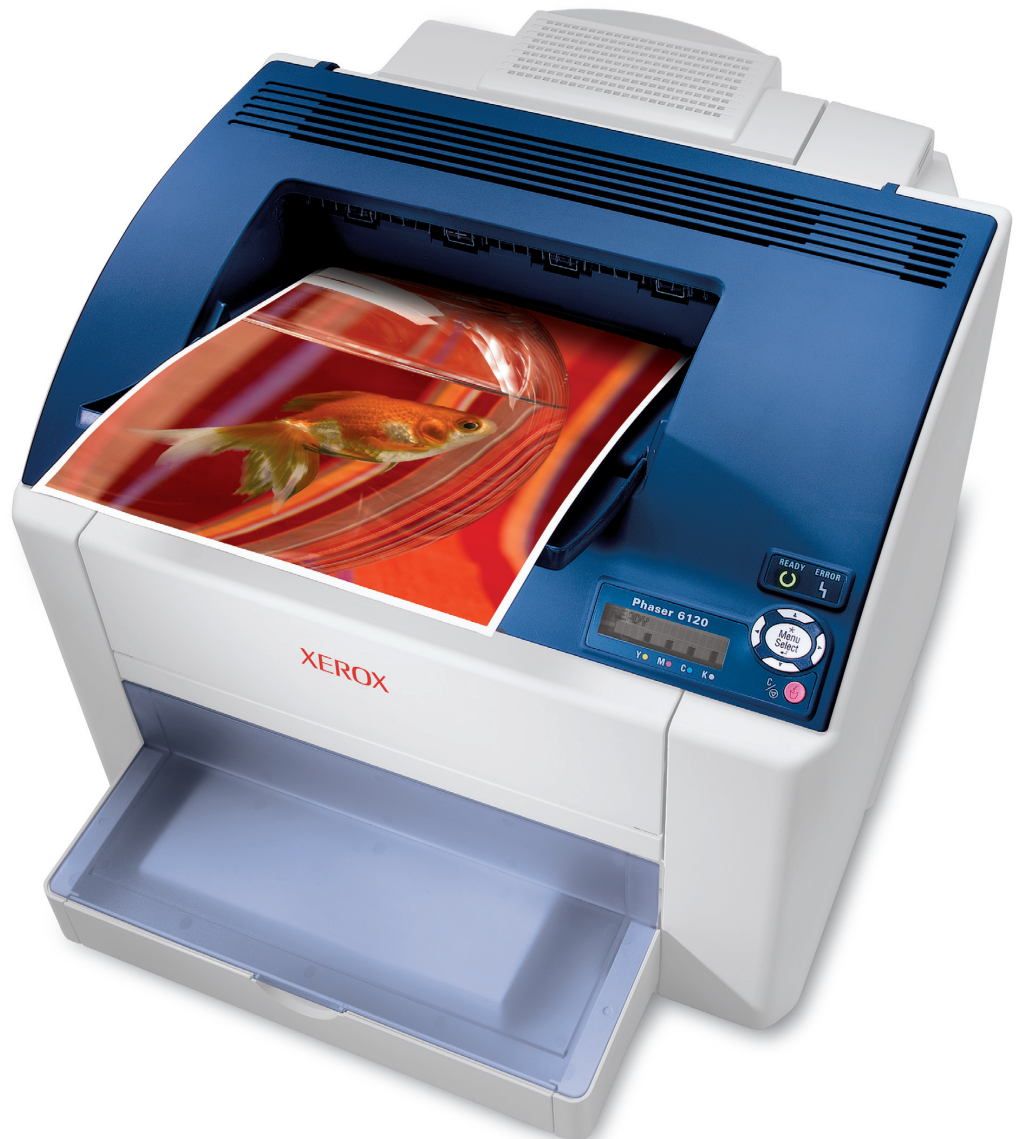
Technology | Document Management | Consulting Services

Phaser[®] 6120



color laser printer

Small size.
Larger than life
office color.



Phaser 6120

Color Laser Printer

Fill your office with brilliant color.

Introducing the Xerox Phaser 6120 color laser printer. This printer offers legendary Phaser color, outstanding media flexibility and a smart, compact design. Plus, it's so easy to install and use, it's the bright spot in any small office.



Precise Phaser color

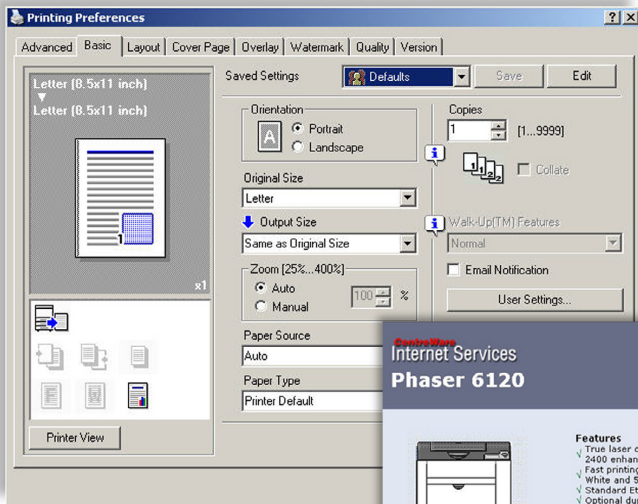
Why settle for “average” color when you can get exceptional quality color from the Xerox Phaser 6120 laser printer.

- Color that pops. Brilliant high resolution delivers amazing fine-line detail.
- Professional results. True-to-life color and Pantone certification mean that you'll always get the color you want.
- Affordable quality. This printer offers industry standard color tools that color professionals will appreciate. Not to mention a price tag small offices will love.

Excellent media flexibility

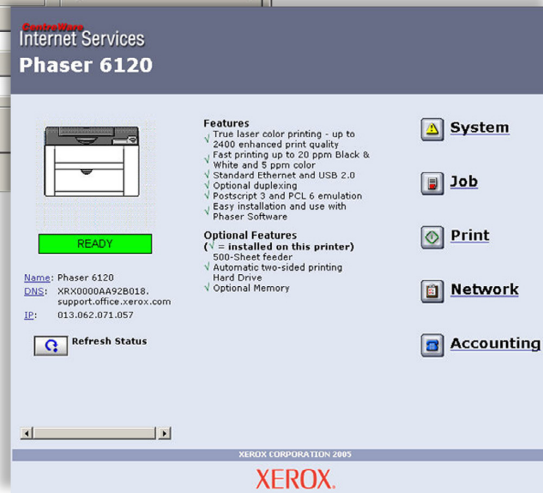
When it comes to media handling, most small office lasers offer the bare minimum. Not the Phaser 6120 laser printer. It makes no compromises.

- Custom jobs made easy. This printer comes with a standard 200-sheet multipurpose tray that supports media as narrow as 4 in. and as long as 14 in. And printing envelopes and labels is a cinch.
- One-sided printing not enough? This printer enables two-sided printing with a reasonably priced duplexer.
- Supports heavy weights. The Phaser 6120 laser printer prints on 60-lb. cover stock (163 gsm) with the same ease as standard paper.
- Presentations with punch. This printer produces lush, full-color transparencies that make any presentation come to life.
- Big jobs welcome. High-output users can opt for an affordable 500-sheet feeder, bringing the total input capacity to 700 pages.



Printing setup is simple and automatic with the Phaser 6120.

CentreWare IS makes it easy to manage printers remotely.



All-around ease

From installation to everyday use, the Phaser 6120 printer is a no-sweat office solution.

- Easy, easy, easy. The Phaser 6120 was carefully engineered from the ground up to make it simple to use.
- Pre-installed toners and imaging unit make this printer virtually plug-and-play. It's so easy, you'll have it up and printing in minutes.
- Stay seated. The embedded CentreWare IS web server enables IT administrators and end-users to manage printers from their own computers.
- Troubleshooter. PrintingScout delivers instant printing alert information right to your workstation.

- Smart design. No more reaching behind the printer to replace a print or drum cartridge. This printer was designed with front-access for user interventions. Even jam clearance is a snap.
- Mac friendly. It has easy-to-use drivers for both PCs and Macs and supports all major print description languages, including PostScript® 3™ language support, PCL® 6, PCL 5c and PCL 5e.
- No waiting. A powerful 300 Mhz processor processes images fast. Connect the way you want with parallel, high-speed USB 2.0 and Ethernet 10/100 Base-TX – all standard.

Designed for greatness

The Phaser 6120 makes a statement in any office. It offers excellent media handling with optional add-ons to enhance your office productivity. Who would have thought something so small could pack in so much?

- 1 Variety encouraged. The 200-sheet multipurpose tray 1 supports a wide range of media; from transparencies to labels, card stock to envelopes.
- 2 Business growing? Add on this optional 500-sheet feeder as your needs expand.
- 3 Print and go for a coffee break. The 200-sheet output tray allows for longer unattended operation.

Double up. This printer offers optional automatic two-sided (duplex) printing.

Optional hard disk drive offers advanced features such as Saved Print and Secure Print, plus flawless collation on multi-set jobs.



Phaser 6120 printer shown with optional 500-sheet feeder

Phaser® 6120



Call today. For more information, call **1-877-362-6567** or visit us at www.xerox.com/office.



CONFIGURATIONS	Phaser 6120N
Speed	Up to 5 ppm color / 20 ppm black-and-white
Duty cycle	Up to 35,000 pages / month
Paper Handling	
Paper input Standard	200-sheet Multipurpose Tray 1
Optional	500-sheet Tray
Automatic 2-sided printing	Optional
Print	
First page out	As fast as 22 seconds color / 13 seconds black-and-white
Resolution	2400 Enhanced
Processor	300 MHz, 32 bit RISC
Language Support	PostScript® 3™ language support, PCL® 6 / PCL 5c / PCL 5e emulations
Connectivity	Parallel, USB 2.0, 10/100 Base-TX Ethernet
Memory (Std / Max)	128 MB / 640 MB
Internal Hard Drive	Optional (20 GB or greater) Hard drive supports Font storage, Forms, Electronic collation, PDF direct printing, Proof / Saved / Secure printing
Print Features	Booklet printing, Watermarks, Custom page sizes, Scaling, Scale-to-fit, N-up printing, Graphical toner level gauges, Built-in support links, PrintingScout Alert notification
Warranty	One-year Quick Exchange, Xerox Total Satisfaction Guarantee

SUPPLIES AND OPTIONS

Consumables	
Standard-Capacity Toner Cartridges*	
Cyan (1,500 pages)	113R00689
Magenta (1,500 pages)	113R00691
Yellow (1,500 pages)	113R00690
High-Capacity Toner Cartridges*	
Cyan (4,500 pages)	113R00693
Magenta (4,500 pages)	113R00695
Yellow (4,500 pages)	113R00694
Black (4,500 pages)	113R00692
*Capacities are approximate, based on 5% coverage on an A-sized page.	
The toner cartridges are part of the Xerox Green World Alliance supplies recycling program. For more information, please visit the Green World Alliance web site at www.xerox.com/gwa	
Routine Maintenance Items	
Imaging Unit (up to 20,000 pages black/up to 10,000 pages color: assumes average job size of 3 pages. Higher average job sizes will increase yields.)	108R00691
Options	
500-Sheet Feeder	
Letter	097S03484
A4	097S03489
Hard Disk Drive	097S03485
Duplex Kit (includes 128 MB Memory)	097S03483

SPECIFICATIONS

Network/Software

Printer management CentreWare® IS Embedded Web Server, PrintingScout Alert Notification, CentreWare Web

Font capabilities 139 Resident PostScript fonts and 81 PCL

Printer drivers Windows 98/Me/NT 4.0/2000/Server 2003/XP Pro/XP Home SP 1 or greater, Mac OS 9.2/OS X version 10.2 or greater, Linux Red Hat/SuSe, Walk-up printing driver

Language support PostScript 3, PCL® 6, PCL 5c, PCL 5e emulations

Paper handling

Maximum input capacity 700 sheets

Multipurpose Tray 1 (standard) 16 – 43 lb. Bond and up to 60 lb. Cover, (60 – 163 gsm), Transparencies, Labels, Envelopes, Card stock. Media sizes: Letter, Legal, Folio, Executive, Statement, Index card, A4, A5, A, B5-ISO, B5-JIS. Envelopes: #10 Commercial, Monarch, DL, C5, C6, custom sizes 3.63 x 5.83 in. (92 x 148 mm) to 8.5 x 14 in. (216 x 356 mm)

500-Sheet tray (optional) 16 – 24 lb. Bond (60 – 90 gsm). Media sizes: Letter, A4.

Automatic two-sided printing (optional) (shipped with an additional 128 MB memory) 20 – 24 lb. Bond (75 – 90 gsm). Media sizes: Letter, A4, Folio Legal 13 in., Legal 14 in. from all trays

Maximum output capacity 200 sheets

Special features

PrintingScout Instantly displays pop-up help if attention is needed throughout print job

Productivity tools Booklet printing, Watermarks, Custom page size default registers, Scaling and scale-to-fit, N-up printing, Forms, Graphical toner level gauges, Built-in support links. Optional hard drive supports: Font storage, Forms, Color profiles, Job accounting, Electronic collation, PDF direct printing (level 1.3, 1.4), Proof print, Saved print and Secure print.

Color controls

Color standards PANTONE®-approved solid-color simulations. Postscript device-independent color.

Selectable print-quality modes 2400 Enhanced; 600 dpi

Operating

Dimensions width: 17.4 in. (442 mm), height: 13.4 in. (341 mm), depth: 15.6 in. (395 mm), weight (with consumables): 44.5 lbs. (20.2 kg); weight (packaged) 54 lbs. (24.4 kg)

Environment Temperature Non-operating: -20° – 40° C (-4° – 104° F), Operating: 10° – 32° C (50° – 90° F); Relative Humidity: Non-operating: 10 – 85% RH, Operating: 10 – 80% RH

Noise level < 35 dB standby, < 54 dB running

Electrical 200 – 240 VAC / 100 – 127 VAC at 50/60 Hz; Power consumption: Printing 380 W (monochrome), 290 W (color), Idle 90 W, Power Saver 27 W, ENERGY STAR® qualified printer; Default time to Power Saver: 30 minutes

Regulatory Listed to UL 60950-1/CSA 60950-1-03, 1st Edition. Class 1 Laser Product. FCC Part 15, Class B. CE marked in accordance with the Low Voltage Directive 73/23/EEC and EMC Directive 89/336/EEC. Section 508 ADA.

Total Satisfaction Services

One-year Quick Exchange Warranty, online web technical support and telephone support. Innovative service offerings include on-site and extended Service Agreements. The Phaser 6120 printer is backed by the Xerox Total Satisfaction Guarantee.

OUTSTANDING MEDIA CAPABILITY

Take full advantage of the Phaser 6120 color printer with our comprehensive Xerox Paper and Specialty Media portfolio, which includes a selection of papers, labels and transparencies that come in a variety of weights and sizes. For a current listing of all recommended printing media visit:

www.xerox.com/office/6120supplies



Copyright © 2006 Xerox Corporation. All rights reserved. Xerox®, CentreWare®, Phaser®, the TekColor® icon, Total Satisfaction Services™ and Walk-Up™ are registered trademarks or service marks of Xerox Corporation in the U.S. and/or other countries. Adobe®, PostScript® and PostScript® 3™ are either registered trademarks or trademarks of Adobe Systems Incorporated in the United States and/or other countries. Mac OS®, Mac and the Mac logo are trademarks of Apple Computer, Inc., registered in the U.S. and other countries. PCL® is a registered trademark of Hewlett-Packard Company. Windows®, Windows NT™ and Windows Server™ are registered trademarks or trademarks of Microsoft Corporation. Red Hat® is a registered trademark of Red Hat, Inc. SUSE™ is a trademark of SUSE LINUX Products GmbH, a Novell business. PANTONE® and other Pantone, Inc. trademarks are the property of Pantone, Inc. ENERGY STAR® is a U.S. registered mark. As an ENERGY STAR Partner, Xerox Corporation has determined that these products meet the ENERGY STAR guidelines for energy efficiency. Other product and/or company names used herein are trademarks of their respective owners. The information in this brochure is subject to change without notice. 11/06 610P723630E 612BR-01UF