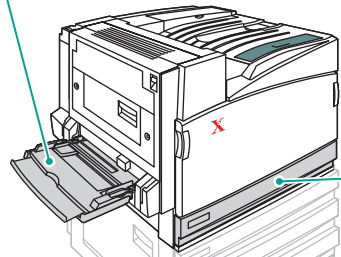


# Getting the Best Print Quality

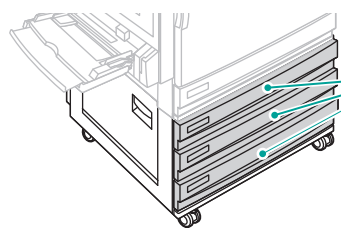
**All trays in the printer require a paper setting.** The default is laser paper, 60-90 g/m<sup>2</sup> (16-24 lb. bond). If you load any other paper weight or type, you must set that new paper at the front panel. Printing with the wrong setting can cause print-quality problems or damage the fuser.

## Load trays with the correct weights

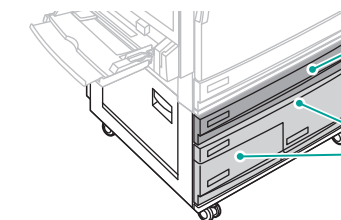
**MPT**  
60 g/m<sup>2</sup> – 220 g/m<sup>2</sup>  
16 – 28 lb. bond  
50 – 80lb. cover  
100 – 110 lb. index



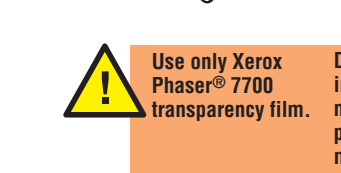
**Tray 1**  
60 g/m<sup>2</sup> – 169 g/m<sup>2</sup>  
16 – 40 lb. bond  
50 – 60 lb. cover  
65 – 90 lb. index



**Tray 2, 3, 4**  
60 g/m<sup>2</sup> – 105 g/m<sup>2</sup>  
16 – 28 lb. bond



**Tray 2**  
60 g/m<sup>2</sup> – 105 g/m<sup>2</sup>  
16 – 28 lb. bond

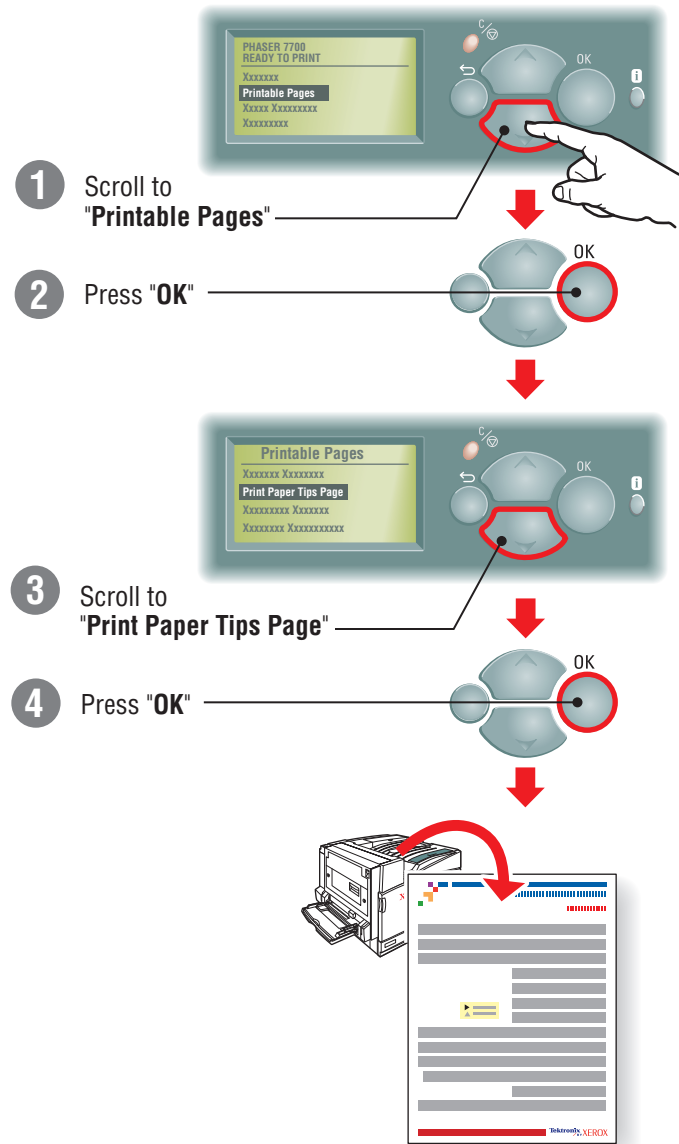


**Tray 3, 4**  
75 g/m<sup>2</sup> – 105 g/m<sup>2</sup>  
20 – 28 lb. bond

**!** Use only Xerox Phaser® 7700 transparency film. Do not use glossy inkjet paper, or non-laser glossy paper. Fuser damage may result.

## Check the Paper Tips Page

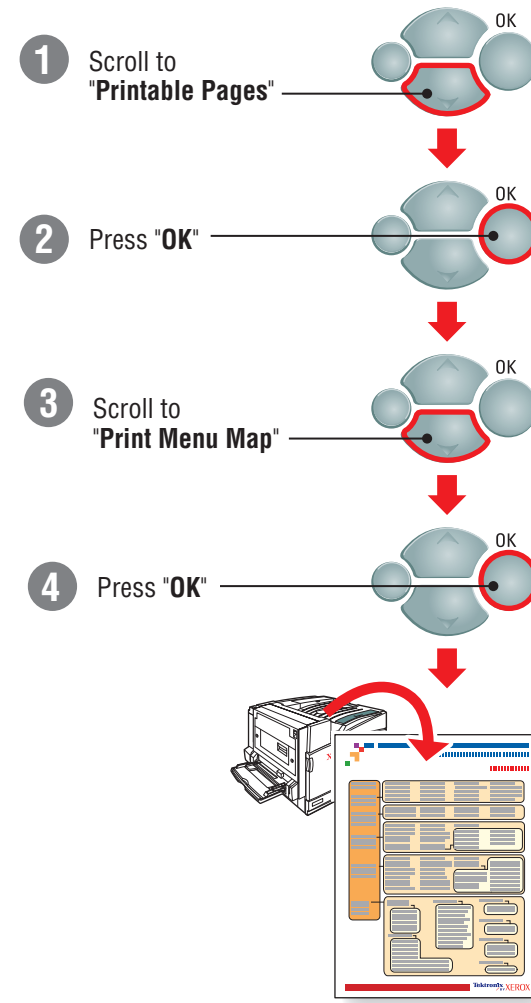
For detailed information on supported papers, weights, and front panel settings print the built-in **Paper Tips Page**



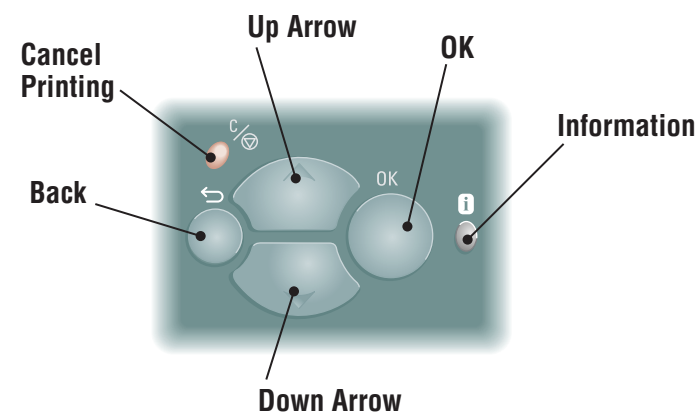
## Print the Menu Map

More help pages and diagnostic procedures are listed on the printer's **Menu Map** under the **Printable Pages Menu**.

At the Front Panel:

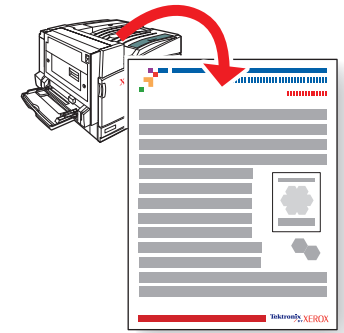


## Front panel buttons



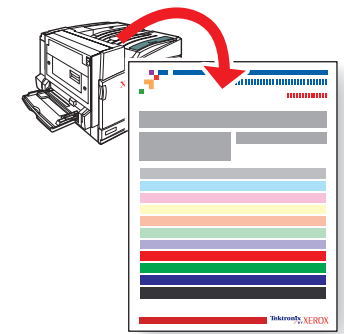
## Calibrate colors

Color balance can be tuned at the printer's front panel by following the procedure outlined on the **Tutorial Page**. Highlight, mid-tone, and shadow adjustments can be made.



## Calibrate for paper

To tune your printer for a particular brand or grade of paper follow the steps on the **Calibrate for Paper Pages**. This may also be necessary if the temperature or humidity changes significantly.



### PhaserSMART™

PhaserSMART is an automated printer diagnostic and troubleshooting tool that uses your internet connection and a web browser.

To access PhaserSMART via the web: go to [www.phaserSMART.com](http://www.phaserSMART.com), and then enter your printer's IP address.

To launch PhaserSMART from CentreWare IS: From a web browser, enter your printer's IP address. Select **Support**. Select the **Technical Support** link to access PhaserSMART.

To launch PhaserSMART from a Windows computer: From your Phaser 7700 printer driver **Properties** dialog box, select the **Troubleshooting** tab. Select the **Technical Support** web link. [www.PhaserSMART.xerox.com](http://www.PhaserSMART.xerox.com)

