

# Regular Printer Maintenance

Your printer needs little maintenance other than periodic cleaning of the density sensor and replacing the following Customer-Replaceable Consumables (CRCs) and Customer-Replaceable Units (CRUs):

- Toner cartridges (black, cyan, magenta and yellow) — see page 17
- Imaging unit — see page 18
- Transfer roller — see page 23
- Fuser — see page 20
- Feed rollers — see page 25

Order extra printer supplies when the printer's front panel displays a warning that the consumable is low or near the end of its life. You must replace the consumable when the front panel displays an error message that the consumable is empty or at the end of its life. For part number information, refer to the *Supplies* section of the *Support Guide* on the **Interactive Documentation CD-ROM**. To order consumables and other supplies, visit the [Phaser® 6200 Supplies and Accessories web site](#). Each item includes installation instructions in the package.

## Caution

Keep the imaging unit out of direct sunlight. Otherwise, faded images, light areas or dark bands may result. Do not place the printer near vents or dust-producing equipment.

## Warning

Do not burn the old toner cartridges, the imaging unit, the transfer roller, or the fuser.

## Cleaning the outside of the printer

You can clean the outside of the printer with a soft, damp well-wrung cloth. You can use a cloth moistened with a mild neutral detergent to remove stains; do not spray detergent directly onto the printer.

## Warning

To prevent electric shock, turn the printer off and unplug the power cord before cleaning the printer.

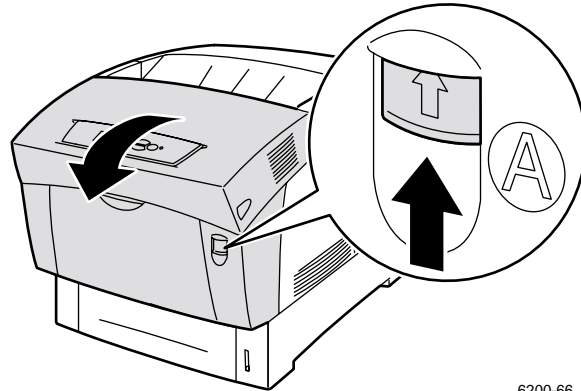
## Caution

Do not use a vacuum cleaner to clean the printer. Do not lubricate the printer with oil.

## Cleaning the density sensor

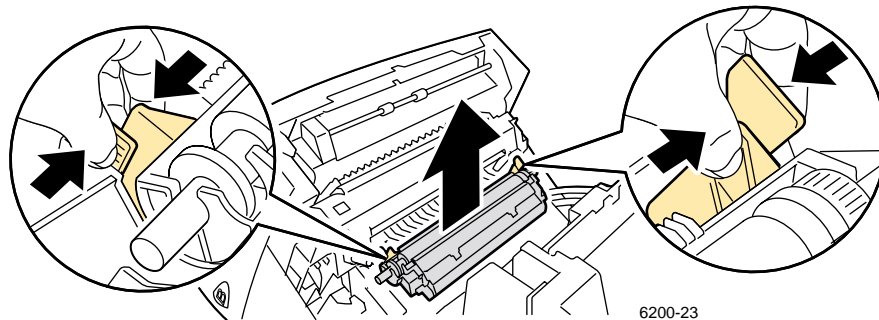
The printer stops printing when the density sensor is dirty. To clean the density sensor:

1. Use the latch on the front of the printer to open Front Door A.



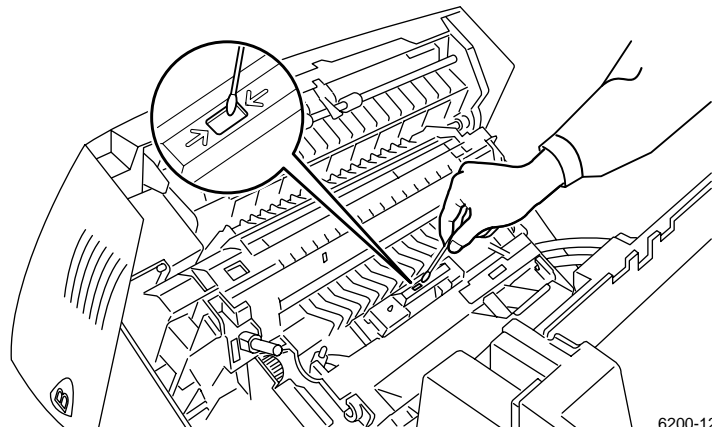
6200-66

2. Remove the transfer roller. Squeeze the orange tabs at both sides of the transfer roller and gently lift it out of the printer.



6200-23

3. Use a dry towel or cotton swab to wipe the density sensor.

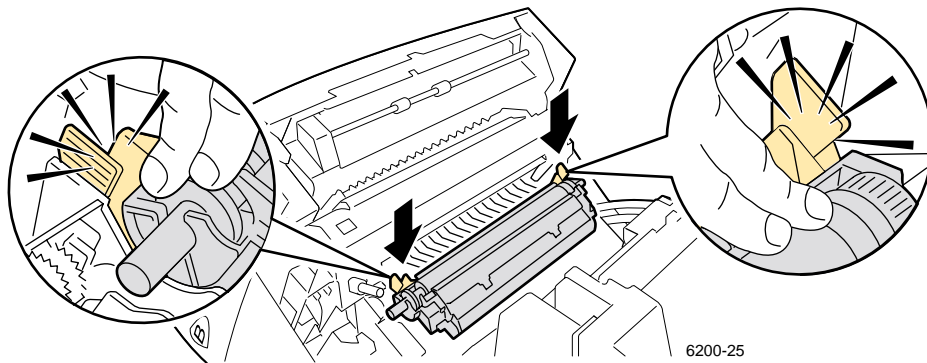
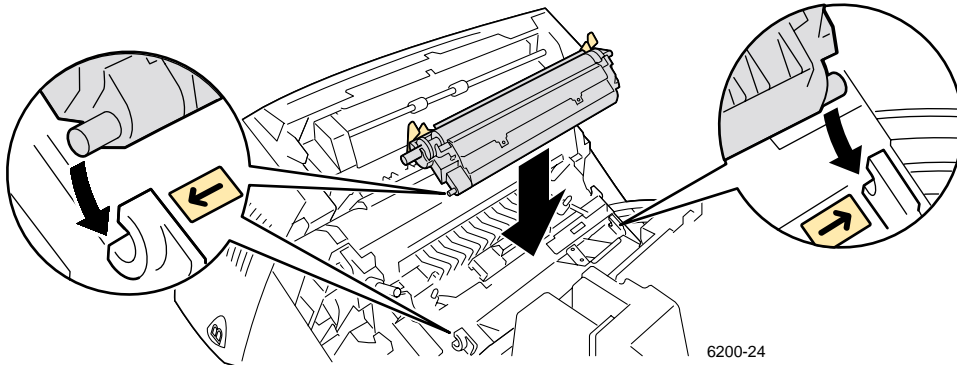


6200-12

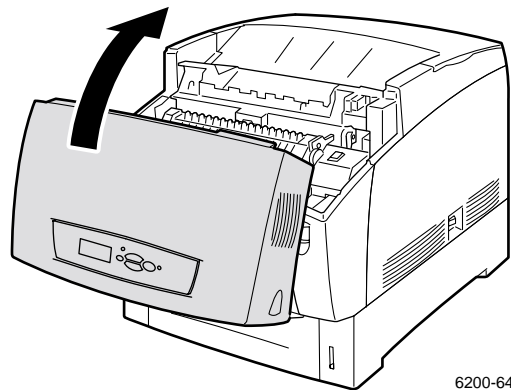
**Caution**

Do not use canned air or isopropyl alcohol on the sensor.

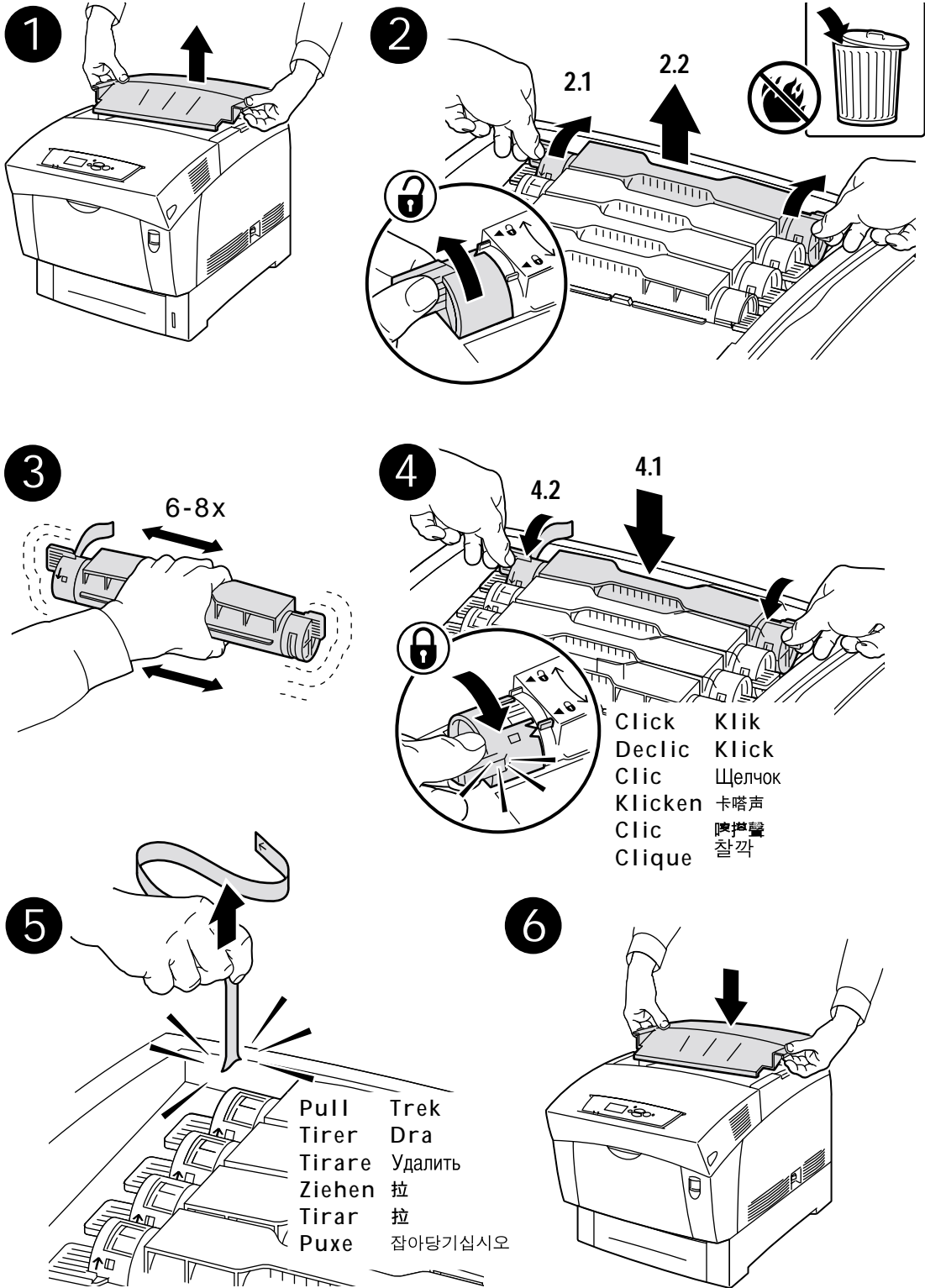
4. Reinstall the transfer roller. Insert the rounded ends of the transfer roller into the curved black guides inside the printer. Lock the transfer roller into the printer by pushing down on the orange tabs until you hear a click.



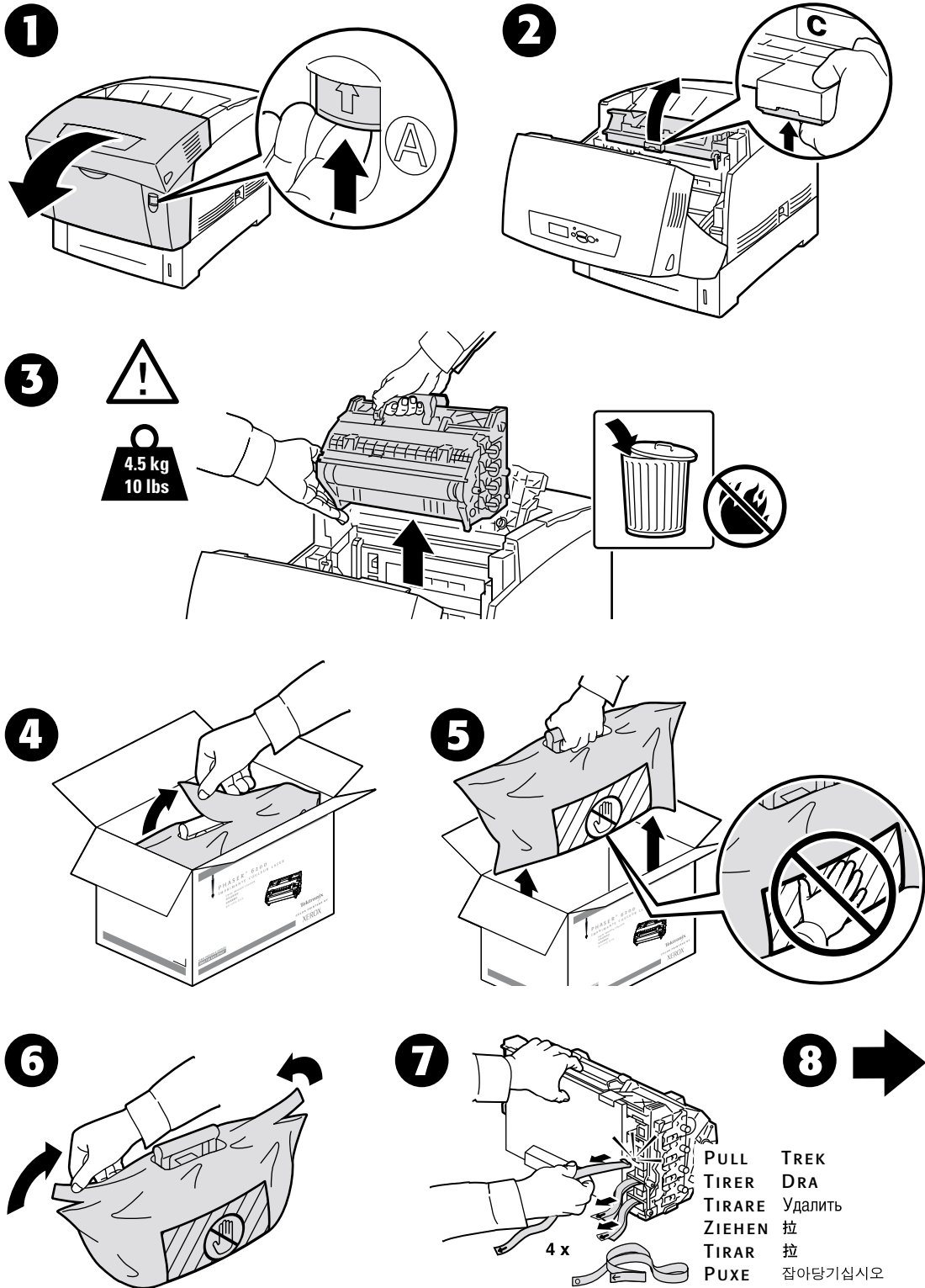
5. Close the front door.

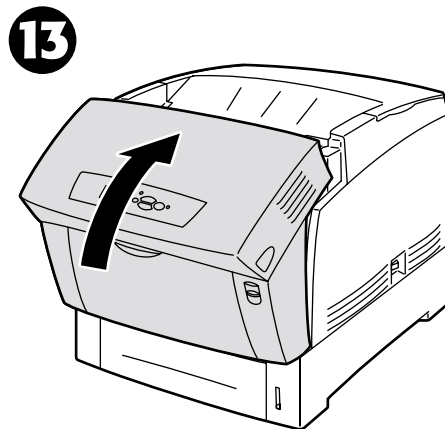
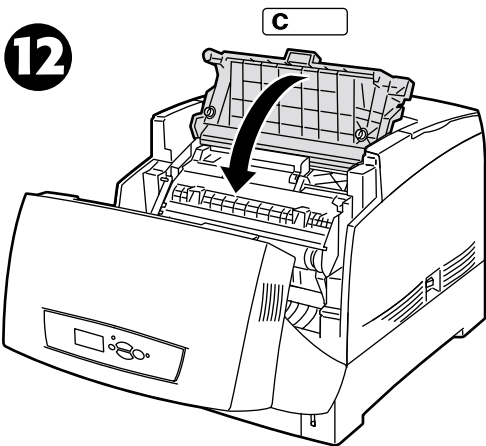
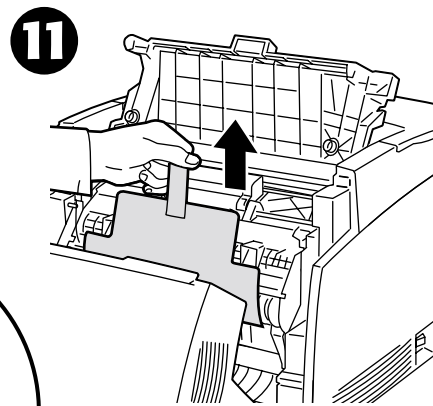
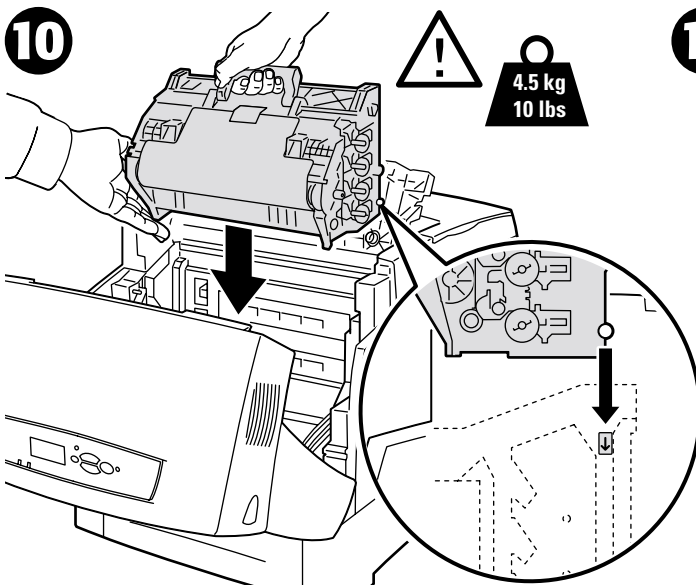
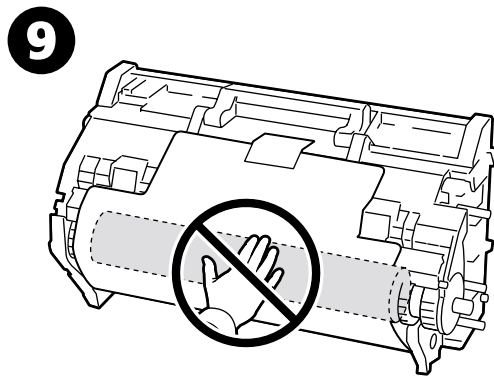
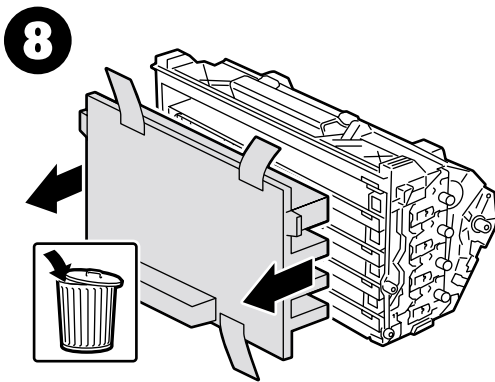


# Replacing a Toner Cartridge

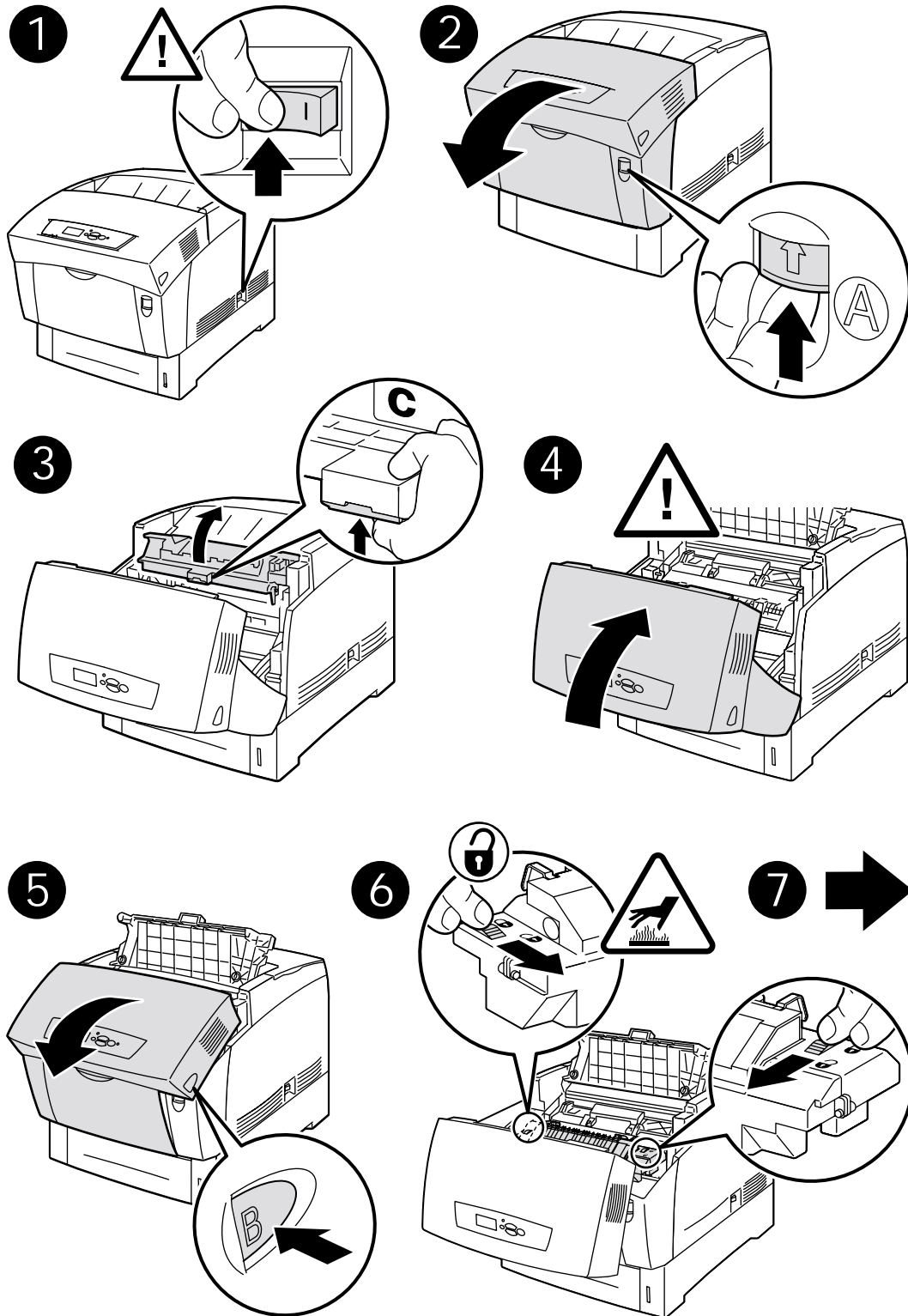


# Replacing the Imaging Unit

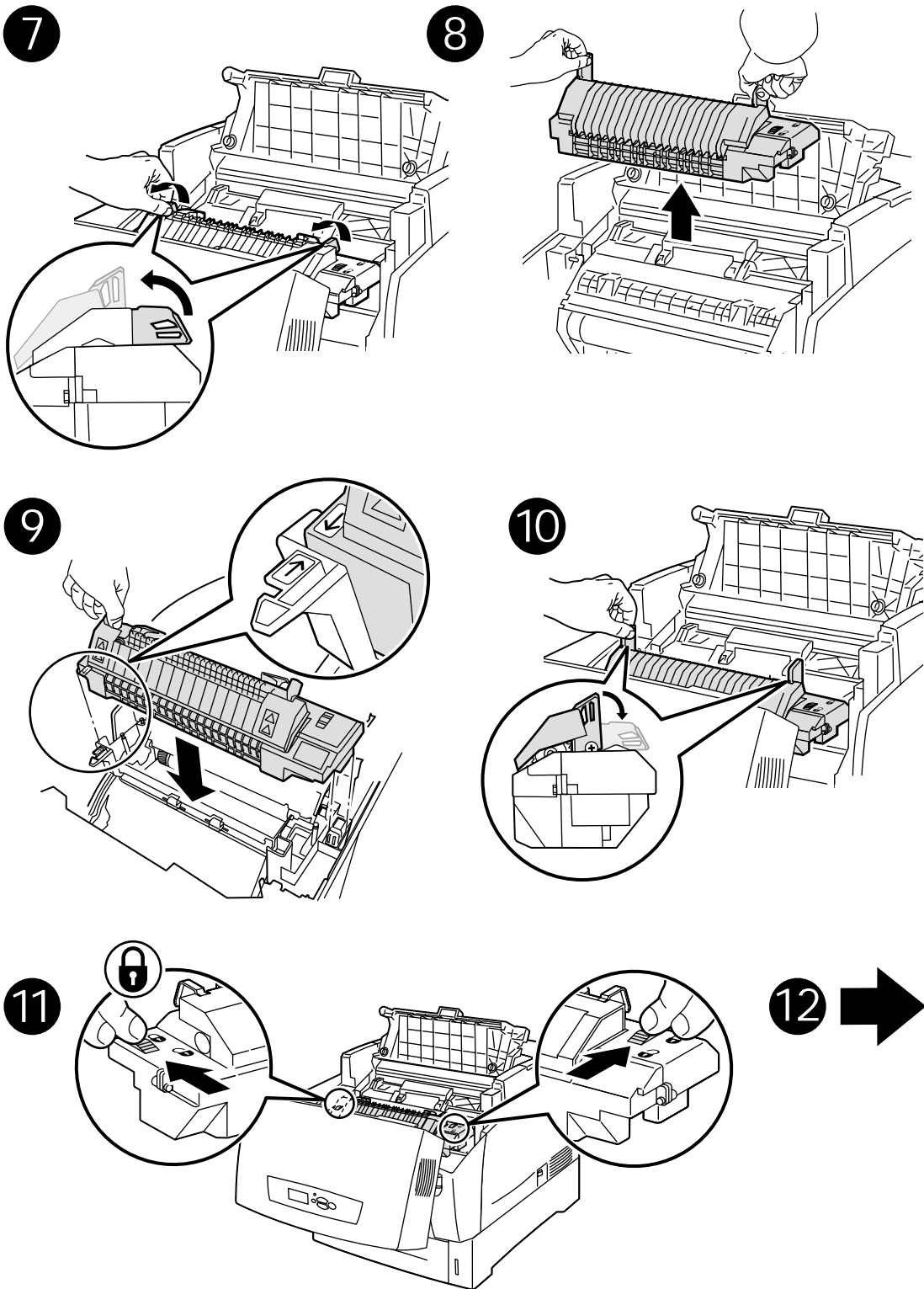




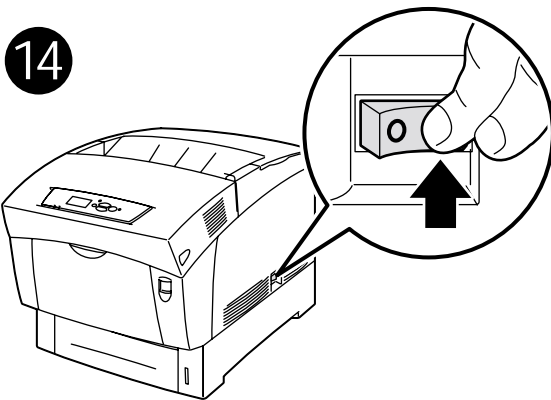
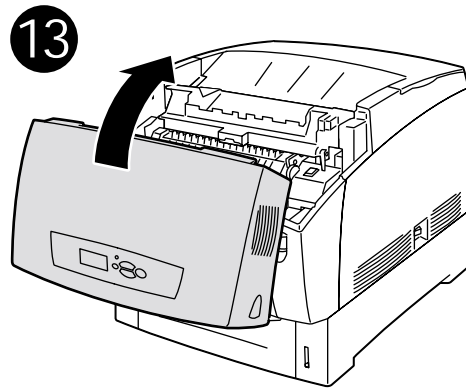
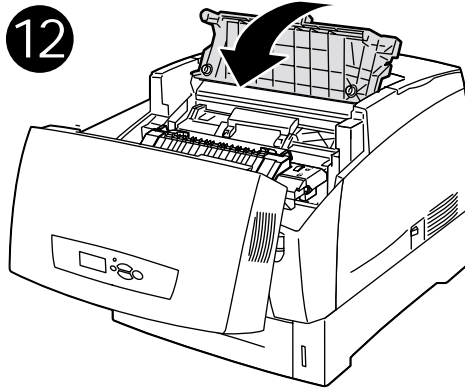
# Replacing the Fuser



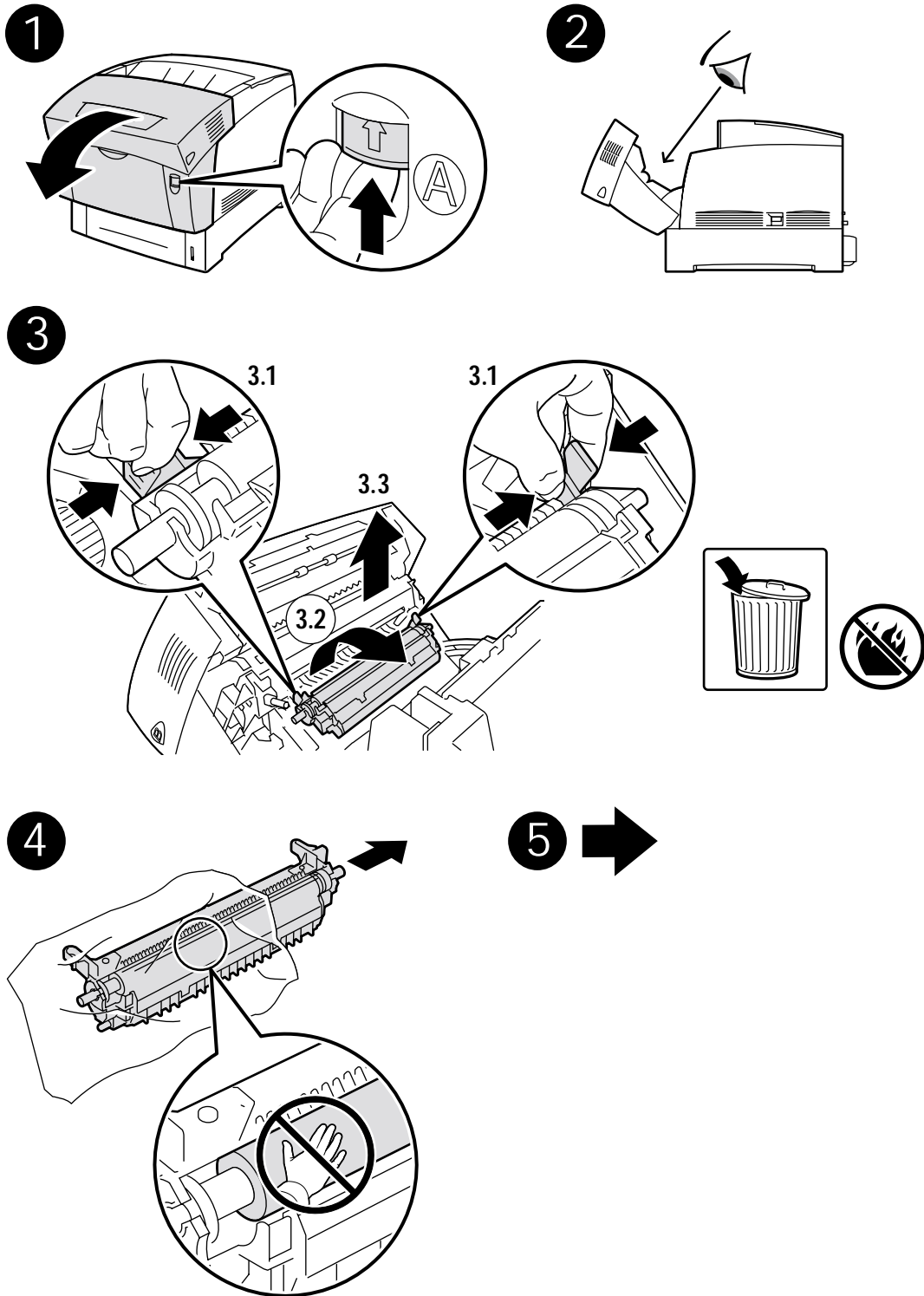


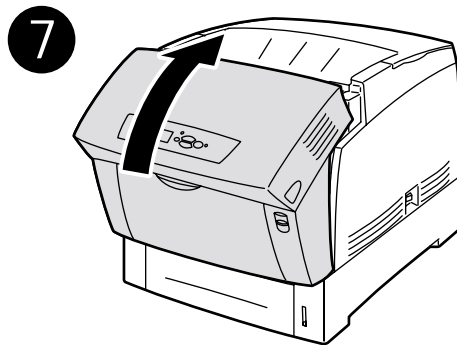
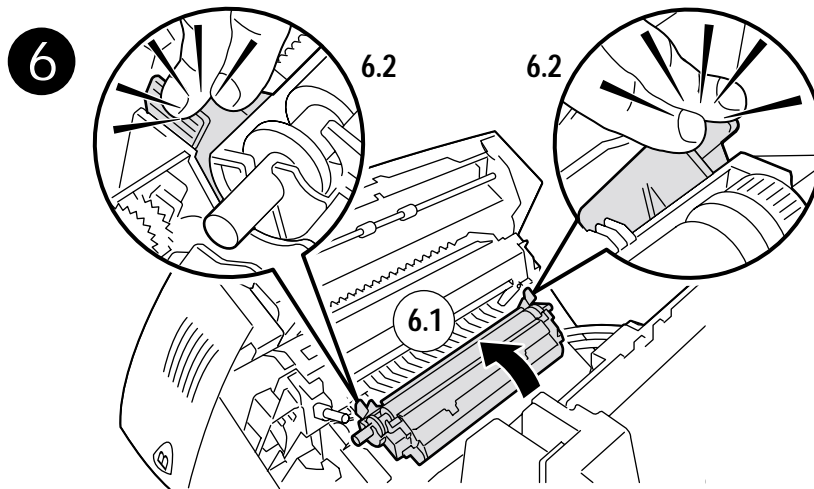
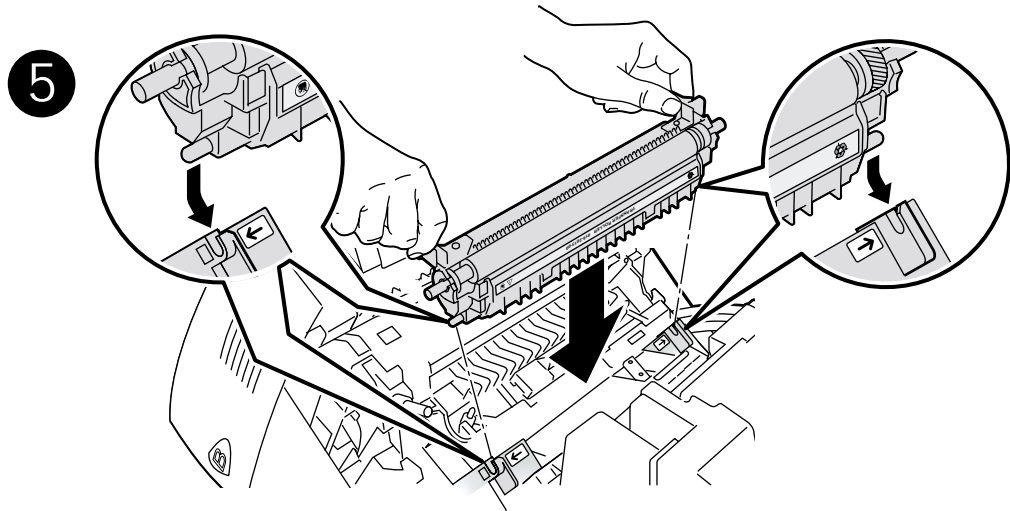






# Replacing the Transfer Roller





# Replacing the Feed Rollers

