

FRU List

This topic provides a list of field replaceable units for the printer.

Changes to Xerox instruments are made to accommodate improved components as they become available. It is important when ordering parts to include the following information:

- Component's part number.
- Instrument type or number.
- Instrument serial number.
- Modification number, if any.

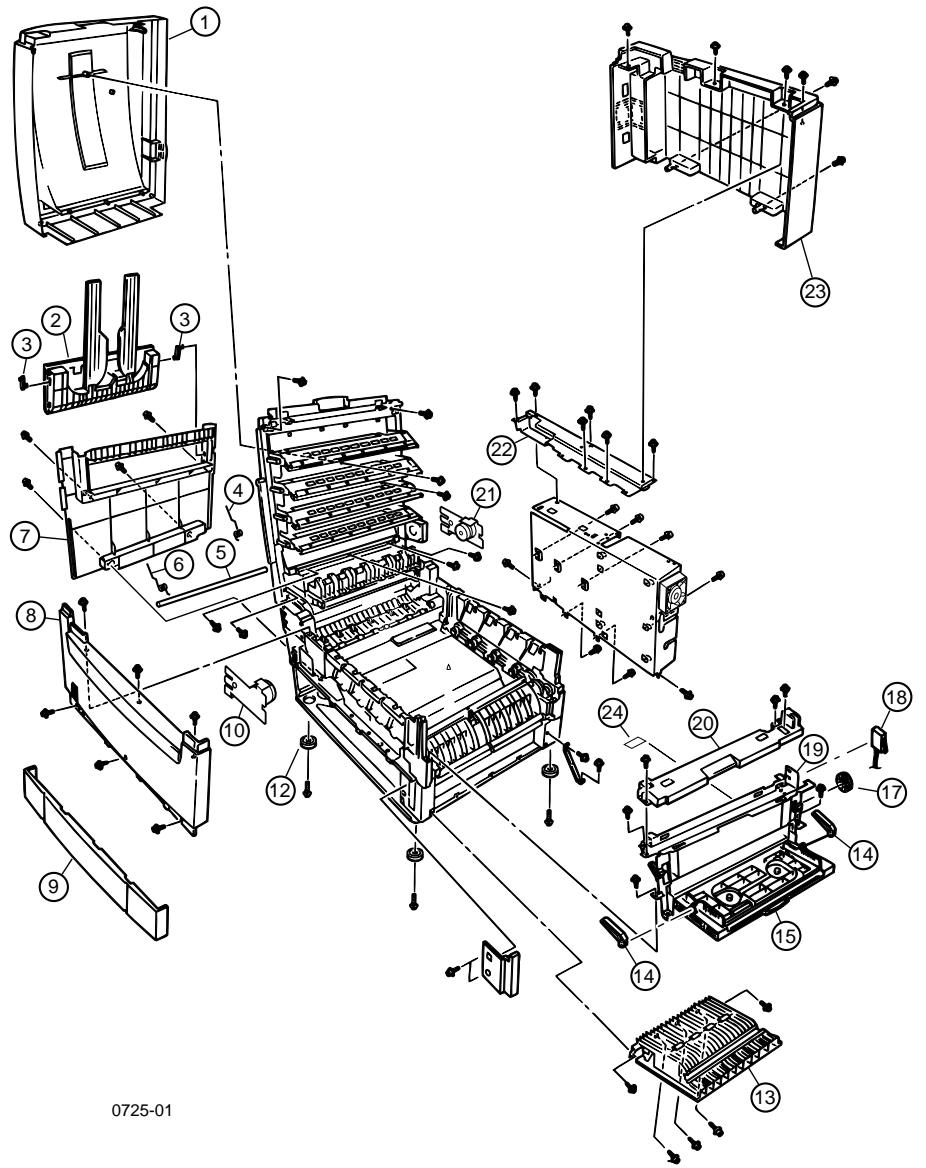
Using the parts list

- The numbers shown in each illustration correspond to the parts list number for that illustration.
- The capital letters “C”, “E”, and “S” shown in an illustration stand for C-ring, E-ring, and Screw, respectively.
- A shaded triangle *t* in an illustration indicates the item is part of an assembly.
- The notation “with X~Y” following a part name indicates an assembly that is made up of components X through Y. For example, “1 (with 2~4)” means part 1 consists of part 2, part 3, and part 4.
- An asterisk * following a part name indicates the page contains a note about this part.
- The notation “J1<>J2 and P2” is attached to a wire harness. It indicates that connector jack 1 is attached to one end of the wire harness and connector jack 2 is attached to the other end that is plugged into plug 2.
- A notation “(part of item 1.1)” indicates that the part is included with item 1.2.1 (PL1.2, line item 1).

Table 1 FRU parts list of the printer cabinet and top cover

Fig 1 parts	Part number	Name and description
1	116-0998-00	Top Cover/Face Down Stack Bin
2	116-1083-00	Side Output Tray/Face Up Stack Tray
3	116-1061-00	Side Output Tray Link
4	116-1052-00	Top Cover Hinge Spring - Rear
5	116-1053-00	Top Cover Hinge Shaft
6	116-1051-00	Top Cover Hinge Spring - Front
7	116-1006-00	Left Side Cover
8	116-1004-00	Front Cover
9	116-1039-00	Duplex Slot Cover
10	116-1055-00	Top Cover Damper - Front
12	116-1008-00	Foot
13	116-1084-00	Right Side Door
14	012E12690	Multi-Sheet Bypass Links (Front & Rear)
15	116-1017-00	Multi-Sheet Bypass Tray
17		Multi-Sheet Bypass Drive Gear (part of 116-1037-00 Gear Kit)
18	116-1025-00	Top Cover Interlock Switch
19	116-1016-00	Multi-Sheet Bypass Pick Assembly
20	116-1018-00	Multi-Sheet Bypass Feeder Top Cover
21	116-1056-00	Top Cover Damper - Rear
22	116-1059-00	Top Cable Shield
23	116-1005-00	Rear Cover
24	5602000P00 01	Temperature/Humidity Sensor Board





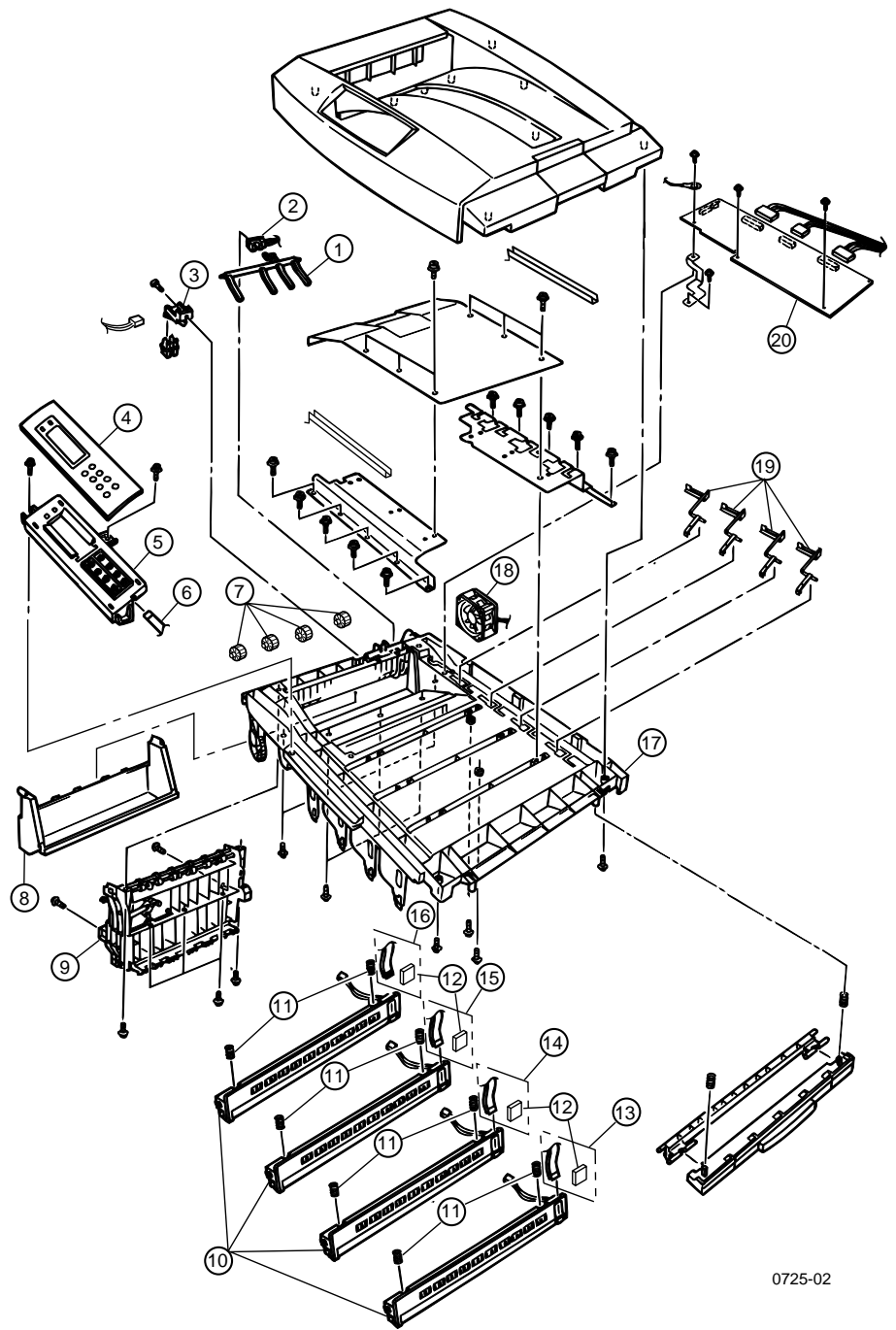
0725-01

Figure 1 Cabinet and top cover FRUs

Table 2 FRU part list of the top cover inner frame

Fig 2 parts	Part number	Name and description
1		Exit/Stack Full Sensor Actuator (part of 116-1036-00 Flag Kit)
2	116-1000-00	Exit/Stack Full Sensor
3	116-1054-00	Top Output (Face-down) Eject Sensor Assembly
4	116-1082-00	Control Panel Bezel
5	116-1003-00	Control Panel Assembly
6		Control Panel Tape Harness (part of 116-1035-00 Harness Kit)
7		Idler Rollers/Face Up Side Tray (part of 116-1038-00 Hardware Kit)
8	116-1057-00	Top Cover/Stack Bin - Inner Cover
9	116-1002-00	Eject Guide Assembly
10	116-0999-00	LED Bar Assembly
11		LED Assembly Spring (part of 116-1038-00 Hardware Kit)
12		26-pin LED Connector (part of 116-1035-00 Harness Kit)
13		Black LED Wiring Harness (part of 116-1035-00 Harness Kit)
14		Yellow LED Wiring Harness (part of 116-1035-00 Harness Kit)
15		Magenta LED Wiring Harness (part of 116-1035-00 Harness Kit)
16		Cyan LED Wiring Harness (part of 116-1035-00 Harness Kit)
17	116-1001-00	Top Cover Inner Frame
18	116-1024-00	Fuser Fan
19		Toner Cartridge Sensor Actuator (part of 116-1036-00 Flag Kit)
20	140E45610	LED/Toner Control Board





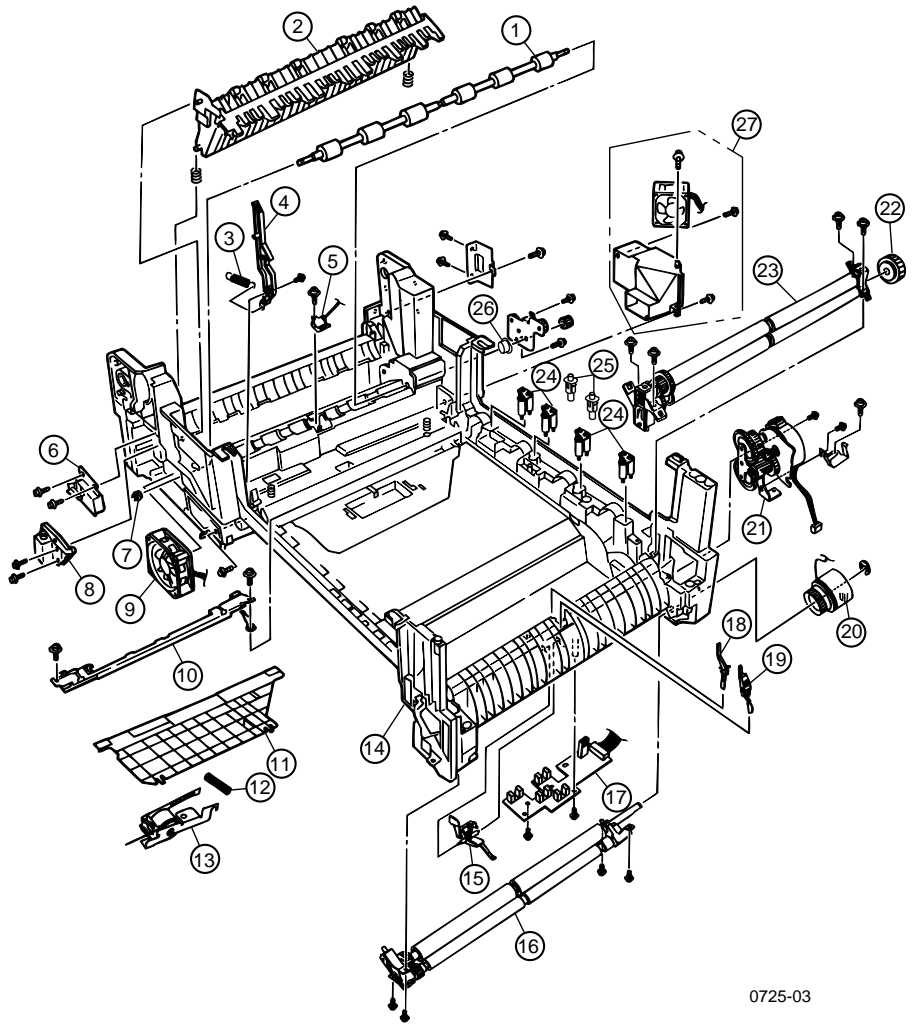
0725-02

Figure 2 Top cover FRUs

Table 3 FRU part list of the printer chassis (1 of 2)

Fig 3 parts	Part number	Name and description
1	116-1022-00	Fuser Exit Roller
2	116-1019-00	Duplex Guide Assembly
3		Fuser Latch Handle Spring (part of 116-1038-00 Hardware Kit)
4	003E55690	Fuser Latching Handle (Front)
5	130K65670	Fuser Exit Sensor Assembly
6	116-1021-00	Top/Side Output Solenoid Assembly
7		Fuser Exit Roller Bushing (Front) (part of 116-1038-00 Hardware Kit)
8	116-1020-00	Duplex Gate Solenoid Assembly
9	116-1066-00	Front Power Supply Fan
10	116-1032-00	Color Registration Sensor Assembly
11	116-1030-00	Color Registration Plate Shutter
12		Registration Shutter Spring (part of 116-1038-00 Hardware Kit)
13	121K26000	Color Registration Shutter Solenoid
14	116-1087-00	Printer Chassis
15		B Registration Entrance Sensor Flag (part of 116-1036-00 Flag Kit)
16	116-1015-00	Registration Roller Assembly (B)
17	160K79190	Entrance Sensor Board
18		A Registration Exit Sensor Actuator (Belt Entrance) (part of 116-1036-00 Flag Kit)
19		A Registration Entrance Sensor Actuator (part of 116-1036-00 Flag Kit)
20	121K25810	Registration Clutch
21	116-1012-00	Registration Motor Assembly
22		Registration Drive Gear A (part of 116-1037-00 Gear Kit)
23	116-1014-00	Registration Roller Assembly (A)
24	115K01970	Drum Contact Assembly
25	116-1068-00	Transfer Contact Assembly
26		Fuser Exit Roller Bushing (Back) (part of 116-1038-00 Hardware Kit)
27	116-1028-00	Rear Power Supply Fan





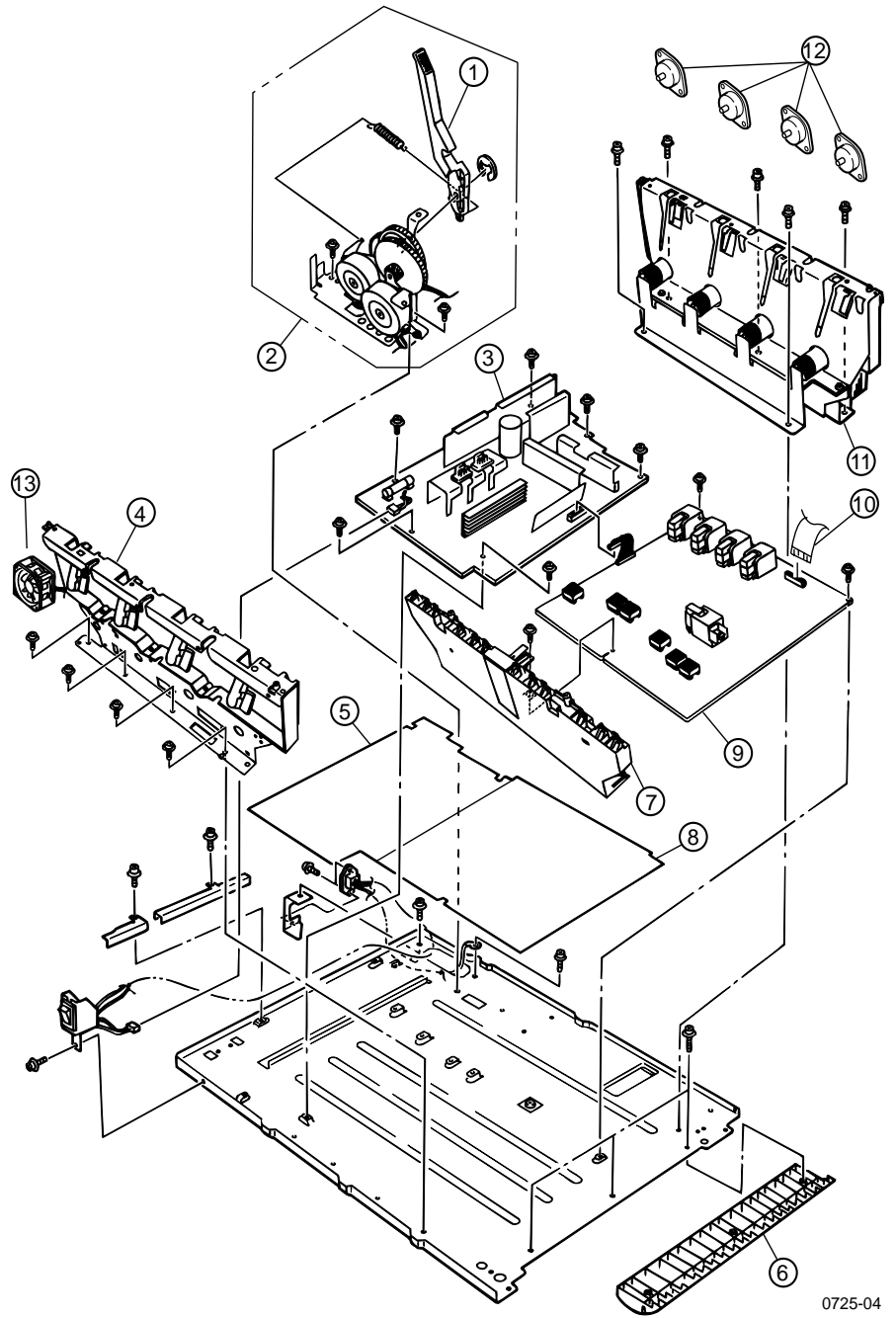
0725-03

Figure 3 Printer chassis FRUs (1 of 2)

Table 4 FRU of the printer chassis (2 of 2)

Fig 4 parts	Part number	Name and description
1	003E55700	Fuser Latching Handle (Rear)
2	116-1011-00	Transfer Belt Motor Assembly
3	116-1026-00 116-1027-00	Low Voltage Power Supply (115 VAC) Low Voltage Power Supply (220 VAC)
4	116-1029-00	Front Plate Assembly
5	116-1034-00	Low Voltage Power Supply Insulator
6	116-1067-00	Duplex Exit Paper Guide
7	115K01960	Rear Contact Assembly
8	116-1033-00	High Voltage Power Supply Insulator
9	105K25120	High Voltage Power Supply
10		High Voltage Tape Harness (part of 116-1035-00 Harness Kit)
11	116-1063-00	Back Plate Assembly w/ Imaging Drum Drive Gears
12	116-1064-00	Imaging Drum Motor
13	41431602	Chassis fan





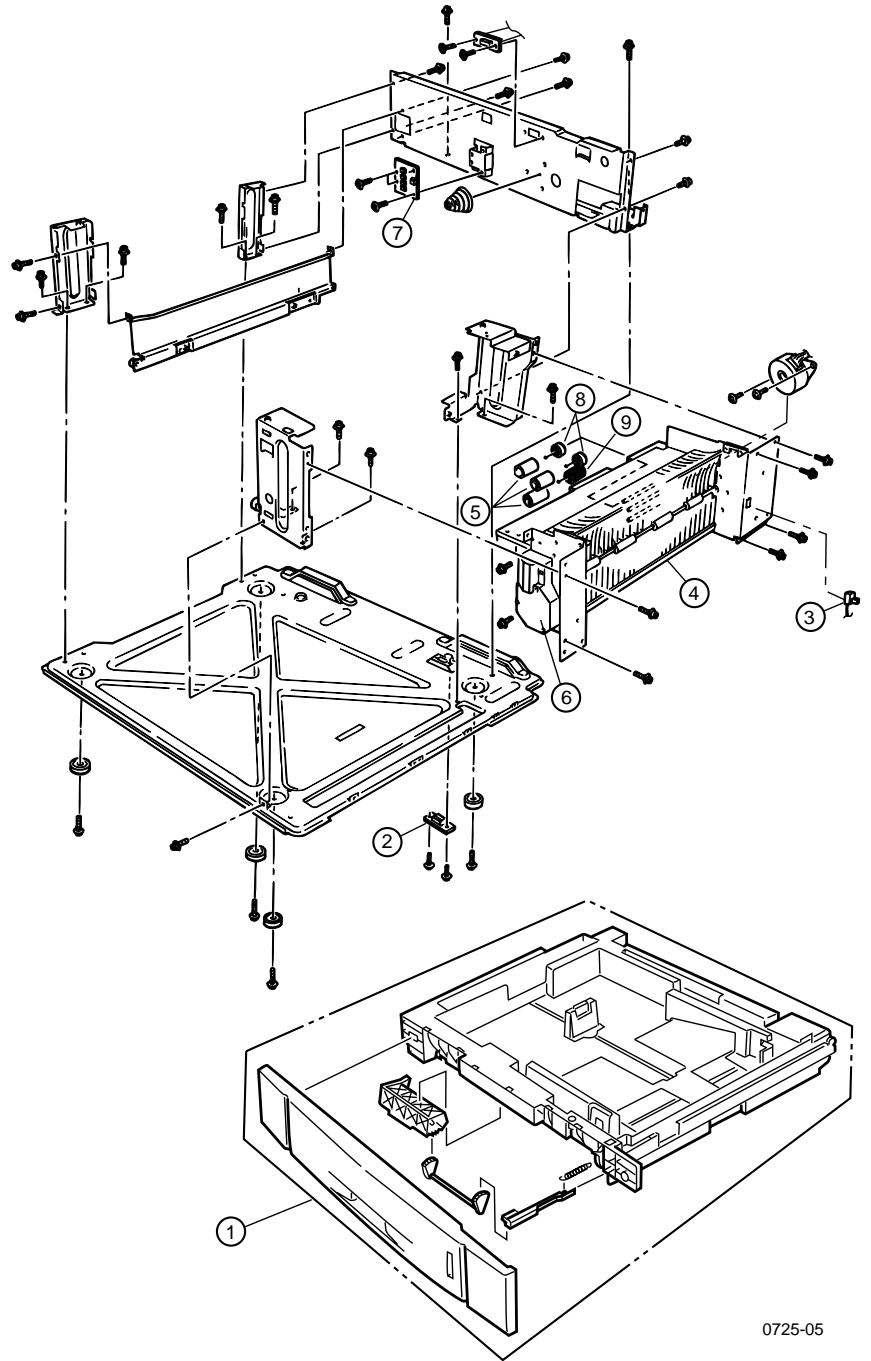
0725-04

Figure 4 Printer chassis FRUs (2 of 2)

Table 5 FRU of the paper tray and paper tray guides

Fig 5 parts	Part number	Name and description
1	116-1009-00	Universal Paper Tray
2	116-1085-00	Connector with Harness
3	116-1065-00	Right Cover Interlock Switch
4	116-1086-00	Main Feeder Assembly
5	116-1062-00	Paper Feed Roller
6	116-1010-00	Media Plate Lift Motor
7	116-1007-00	Paper Size Sensing Board (includes Ribbon Harness)
8	41402901	Roller Clutches (Bearing, One-Way)
9	41406601	Roller Torque Limiter



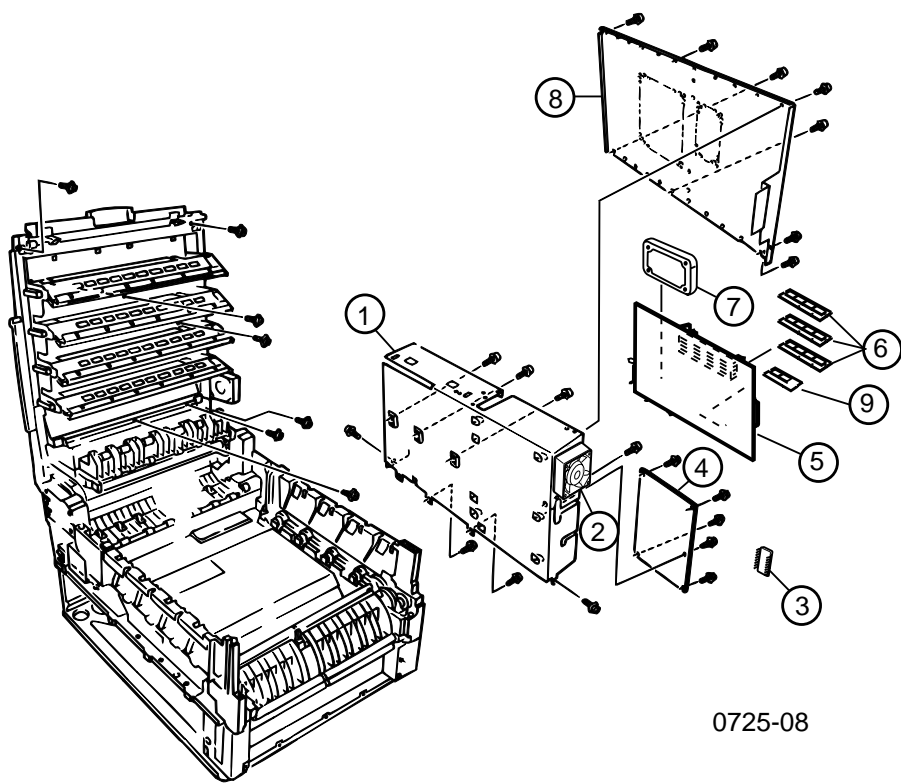


0725-05

Figure 5 Paper tray and paper tray guides FRUs

Table 6 Electrical components FRUs

Fig 8 parts	Part number	Name and description
1	116-1050-00	Electrical Card Cage
2	116-1023-00	Electrical Chassis Cooling Fan
3	537E61970	CRU EEPROM 816A2323M000
4	116-1031-00	Engine Controller Board
5	671-5269-00	System Controller Board (EFI Controller), Image Processor
6	156-4811-10 156-4780-10 156-4839-00	64-Mbyte RAM DIMM 128-Mbyte RAM DIMM 256-Mbyte RAM DIMM
7	650-4209-00	Internal IDE hard drive, programmed
8	160-1060-00	Outer (Rear) Shield Plate
9	674-5282-00	Code ROM DIMM

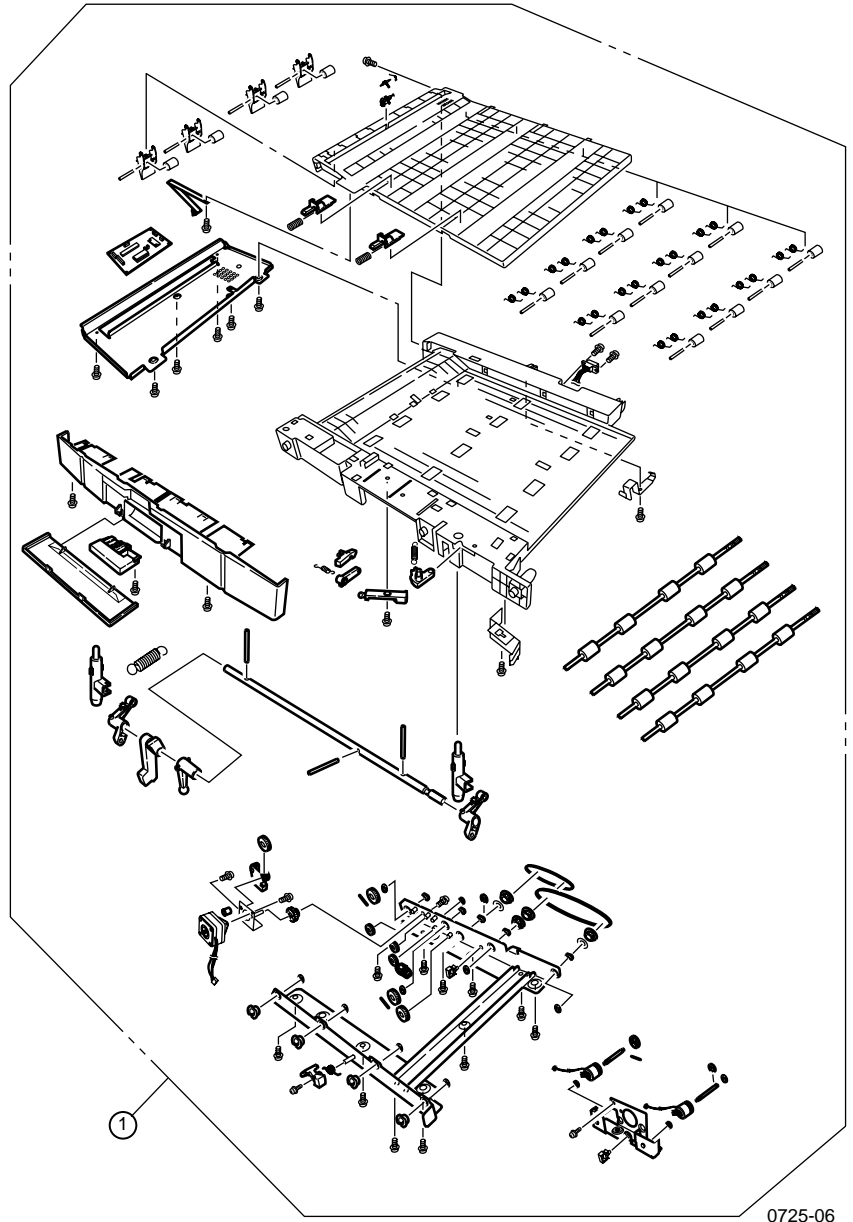


0725-08

Figure 6 Electrical components FRUs

Table 7 FRUs of the duplexer unit

Fig 9 parts	Part number	Name and description
1	116-1088-00	Duplex Transport Assembly



0725-06

Figure 7 Duplexer unit

Table 8 FRUs of the Lower Tray Assembly

Fig 10 parts	Part number	Name and description
	119-6376-00	Lower Tray Assembly (with tray)
	119-6377-00	Lower Tray Deck (with trays)
1	116-1045-00	Lower Tray Assembly Left Cover
2	116-1043-00	Lower Tray Assembly Front Right Cover
3	116-1009-00	Lower Tray Assembly Universal Tray
4	116-1013-00	Castor Wheel
5	116-1046-00	Lower Tray Assembly Right Side Cover (Door)
6	116-1047-00	Lower Tray Assembly Main Feeder Assembly
7	116-1048-00	Lower Tray Assembly Control Board
8	116-1044-00	Lower Tray Assembly Rear Cover
9	116-1040-00	Lower Tray Assembly Top Connector



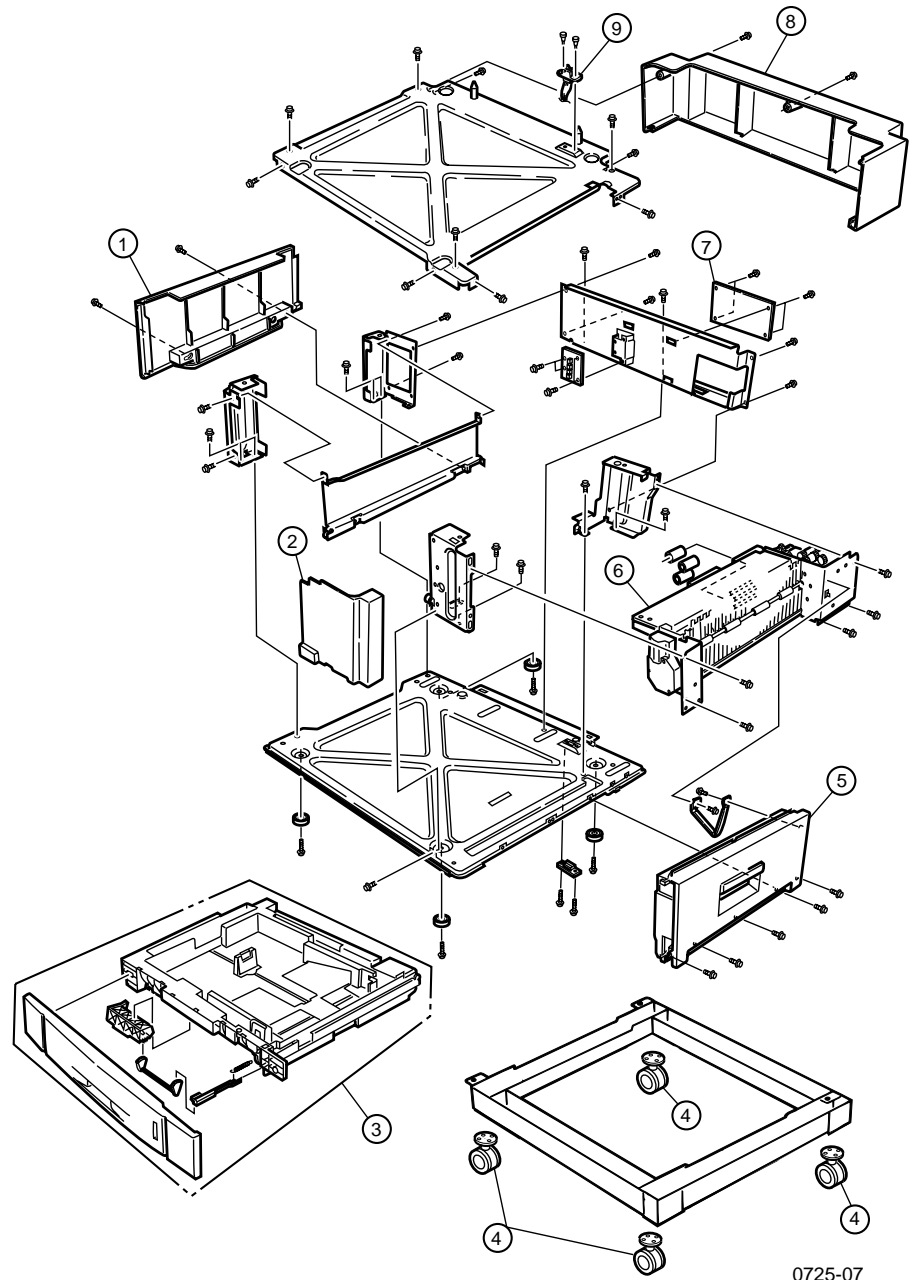


Figure 8 Lower Tray Assembly FRUs

Table 9 Hardware kit

Part number	Name and description
116-1038-00	Hardware Kit
	LED Assembly Spring Kit
	Fuser Exit Roller Bushing (Front)
	Fuser Exit Roller Bushing (Back)
	Registration Shutter Spring
	Fuser Latch Handle Springs
	Screw (T3x8)
	Screw (T3x10)
	Screw (T4x10)
	Screw (M2x8)
	Screw (M3x6)
	Screw (M3x8)
	Screw (M4x8)
	Screw (SP3x10)
	Screw (T4X6)
	Screw (T4X8)
	Plastic Eject Rollers

Table 10 Gear kit

Part number	Name and description
116-1037-00	Gear Kit
	Main Feeder Drive Gear
	Fuser Drive Gear A
	Fuser Drive Gear B
	Fuser Drive Gear C
	Registration Drive Gear A
	Multi-sheet Bypass Feeder Drive Gear
	Imaging Drum Drive Gear



Table 11 Harness kit

Part number	Name and description
116-1035-00	Harness Kit
	LED Harness M
	LED Harness C
	LED Harness Y
	LED Harness K
	26 pin LED connector
	Control Panel Tape Harness
	High Voltage Tape Harness
	For Heat Motor, Belt Motor
	For MBF paper End sensor, Near End sensor, OHP sensor
	For 1stPaperEnd sensor, Near end sensor, 2nd Interface, Temp/Humidity sensor
	For Geared Motor
	For Feed sensor
	For Color Registration sensor
	For Board N71
	For Board R71
	For Board A73
	For Duplexer
	For Power
	For Right side Cover Open, Stacker Cover Open
	For Right side Cover Open-Relay cable
	For C73 Interface (Finisher)
	For Job Offset motor, Fuser Fan-relay cable
	For Image Drum Motor
	For hopping Motor, MBF/Registration Motor
	For pickup clutch, feed roller Clutch
	Temp/Humidity sensor-relay cable
	Paper End sensor-relay, Paper Near End sensor-relay cable
	For Paper Size Detect (board B73)
	For Y71 PWB

Table 12 Sensor flag kit

Part number	Name and description
116-1036-00	Flag Kit
	Stack Full Flag
	Toner Sensor Actuator (qty of 4)
	Intermediate Exit Flag
	B Reg Entrance Sensor Flag
	A Reg Entrance Sensor Flag
	A Reg Exit Sensor Flag
	Tray 1 Media Low Flag
	Tray 1 Media Out Flag

Table 13 Customer supplies and accessories

Part number	Name and description
061-4288-00	Phaser 2135 Manual Pack (English)
061-4289-00	Phaser 2135 Manual Pack (French)
061-4290-00	Phaser 2135 Manual Pack (Italian)
061-4291-00	Phaser 2135 Manual Pack (German)
061-4292-00	Phaser 2135 Manual Pack (Spanish)
061-4293-00	Phaser 2135 Manual Pack, Brazilian/Portuguese
061-4294-00	Phaser 2135 Manual Pack, Simplified Chinese
061-4295-00	Phaser 2135 Manual Pack, Traditional Chinese
061-4296-00	Phaser 2135 Manual Pack, Korean
061-4298-00	Phaser 2135 Manual Pack, Dutch
061-4299-00	Phaser 2135 Manual Pack, Swedish
071-0725-00	Phaser 2135 Service Quick Reference Guide
063-3399-00	CD-ROM, Printer Software, Drivers and Utilities
063-3400-00	CD-ROM, Printer Management
003-1496-00	Toner Vacuum (115 VAC)
003-1497-00	Toner Vacuum (220 VAC)
003-1498-00	Filter for 3M Toner Vacuums
003-0619-00	DIP IC removal tool



Table 13 Customer supplies and accessories

Part number	Name and description
003-1633-00	PLCC IC removal tool
161-0310-00	Power cord, US, shielded
161-0066-09	Power cord, 220V Euro
161-0066-10	Power cord, U.K.
161-0066-11	Power cord, Australian
161-0154-00	Power cord, Swiss
161-0240-00	Power cord, Danish
006-7998-00	Conductive grease, silicon
065-0598-00	Shipping box, replacement kit
004-5127-00	Shipping Carton

└─┘