

# Preconfiguring the Windows<sup>®</sup> 7 Xerox Print Drivers

## Customer Tip

dc10cc0460

January 29, 2010

This document applies to Xerox Print Drivers for the Windows 7 Operating System.

### Purpose

This document contains the procedure to preconfigure the PostScript, PCL, and PCL6 print drivers of the listed Xerox products. System administrators can use the information in this document to customize the default configuration settings that initialize when a print driver is installed. A preconfigured driver maintains its customized defaults in subsequent installations.

Preconfiguration is used to alter default settings “pushed” to users in a network environment. For example, a company may want all of their users to staple multi-page jobs. By pre-configuring a driver with this setting, the multi-page print jobs of everyone in the environment that connects to this print driver are stapled. Pre-configuration is not necessary in all environments.

Only one preconfigured Xerox driver per product family is advised. If two preconfigured drivers exist for the same product family, the settings of the last driver installed takes precedence.

**Warning:** Pre-configuring a WHQL Microsoft certified driver voids the certification.

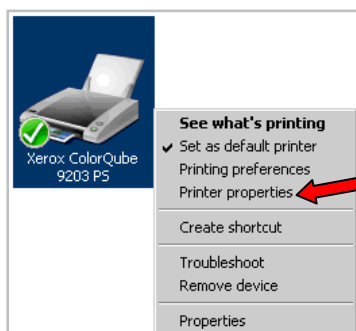
### Pre-installation Requirement

- Administrative privileges on the workstation.

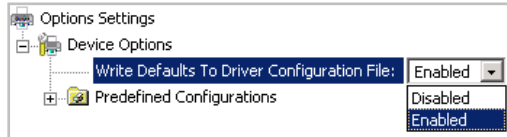
### Preconfiguring the Print Driver

The following procedure can be used to preconfigure all driver options.

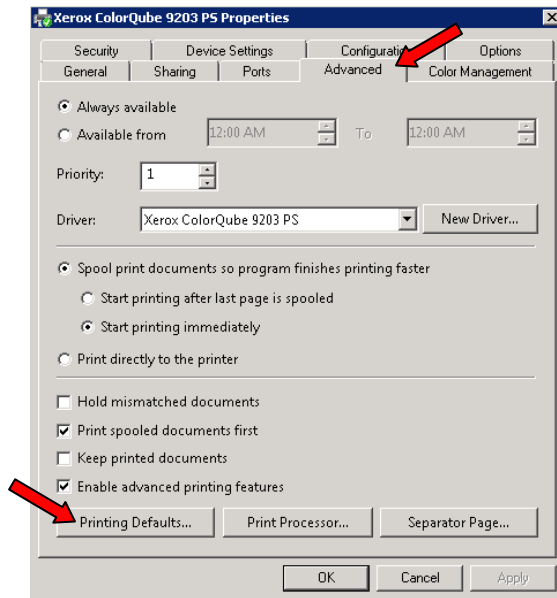
1. Place the printer driver files in a location accessible by the workstation.
2. Install the Xerox print driver on the workstation. For details please see the Customer Tip entitled ‘Installing and Uninstalling Windows 7 Xerox Print Drivers’.
3. From Windows 7 click on ‘Start’ → ‘Control Panel’.
4. Click on ‘Devices and Printers’.
5. Right click the Xerox product that you want to preconfigure and select ‘Printer properties’.



6. Select the 'Options' tab
7. Set the **Write Defaults to Driver Confirmation File** pull-down to **Enabled** and click **[Apply]**.



8. To access the driver options select the **Advanced** tab and click the **[Printing Defaults...]** button.



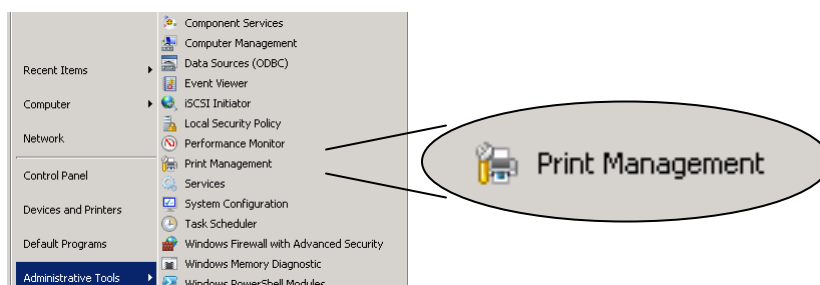
9. Within the **Printing Defaults** window update the driver options you want to preconfigure.
10. Select **[Apply]** and **[OK]** to retain the options.
11. Click on the **Options** tab and select **Disabled** for the **Write Defaults to Driver Confirmation File** selection.
12. Click **[Apply]** and **[OK]**. You have successfully preconfigured the printer driver.

## Duplicating Driver Preconfiguration Settings to Other Workstations

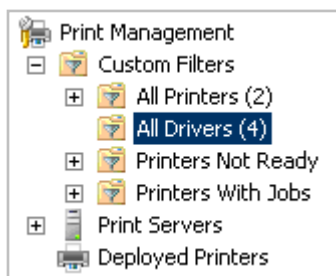
The configuration (.cfg) file mentioned in this procedure contains the driver's options which allow the options to be propagated to other users.

- Note:**
- Do not use a configuration file from one type of print driver file for another, for example PS versus PCL.
  - Do not use a configuration file from one operating system for another operating system, for example Windows XP versus Windows 7.

1. From Windows 7 select '**Start → Administrative Tools → Print Management**'.

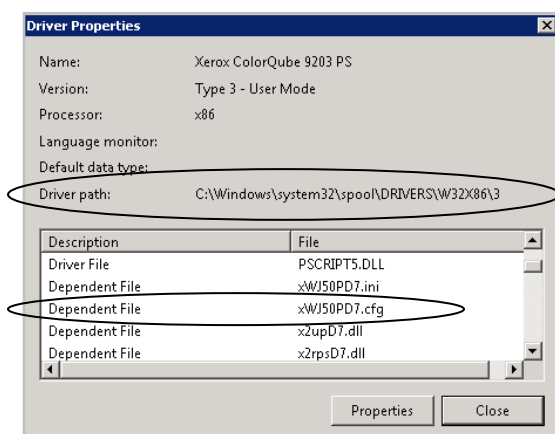


2. Within the 'Print Management' window select 'Custom Filters → All Drivers'.



3. Right click on the appropriate driver listed in the middle section of the window, and select 'Properties'.
4. Within the Driver Properties window look for the 'Dependent File' that contains the .cfg file type and take note of the file name and 'Driver Path'.

In this example the file name is 'xWJ50PD7.cfg' and Driver path is 'C:\Windows\system32\spool\DRIVERS\W32X86\3'



13. Copy the .cfg file from the 'Driver path' location noted in step 4.
14. Paste the .cfg file into the folder you specified in step 1. You will be prompted to overwrite the file, click [Yes].
15. You may now copy the driver files, with the modified .cfg file, to a location where they can be used to install the preconfigured driver.

To verify that the print driver is configured properly, install the print driver. Once the installation is complete, access the printer properties and verify that the changes appear in the print driver. If the options are not correct, a step may have been missed during the pre-configuration procedure.

**IMPORTANT:** After the pre-configuration steps have been completed and the driver has been installed on the Print Server, the driver settings will be propagated to the client workstations once connected. Any changes to the driver after initial installation of the pre-configured driver will not automatically propagate to the client. To make additional changes to the driver configuration follow the procedure in this document from the beginning.

## Supported Products

ColorQube 9201/9202/9203		
<b>Phaser Products</b>		
Phaser 3635MFP	Phaser 6250 / 6300 / 6350 / 6360	Phaser 8400 / 8500 / 8550
Phaser 4500	Phaser 7400	Phaser 8560 / 8560MFP
Phaser 4510	Phaser 7500	Phaser 8860 / 8860MFP
Phaser 5500	Phaser 7750	
Phaser 5550	Phaser 7760	
<b>WorkCentre Products</b>		
WorkCentre C2424	WorkCentre Pro 32 / 40 Color	WorkCentre 7232 / 7242
WorkCentre Pro 232 / 238 / 245 / 255 / 265 / 275	WorkCentre Pro 165 / 175	WorkCentre 5222 / 5225 / 5230
WorkCentre 4150/4250/4260	WorkCentre Pro 65 / 75 / 90	WorkCentre 7425 / 7428 / 7435
WorkCentre 5030/5050	WorkCentre 5135/5150	
WorkCentre 5632 / 5638 / 5645 / 5655 / 5665 / 5675 / 5687	WorkCentre 6400	
WorkCentre 7655 / 7665 / 7675	WorkCentre 7755/7765/7775	
WorkCentre Pro C2128 / C2636 / C3545	WorkCentre 7328 / 7335 / 7345 / 7346	

## Additional Information

You can reach Xerox Customer Support at <http://www.xerox.com> or by calling Xerox Support in your country.

Xerox Customer Support welcomes feedback on all documentation - send feedback via e-mail to: [USA.DSSC.Doc.Feedback@mc.usa.xerox.com](mailto:USA.DSSC.Doc.Feedback@mc.usa.xerox.com).

Other Tips about Xerox multifunction devices are available at the following URL: <http://www.office.xerox.com/support/dctips/dctips.html>.

© 2010 Xerox Corporation. All rights reserved. XEROX®, the sphere of connectivity design, and Global Print Driver™ are trademarks of Xerox Corporation in the United States and/or other countries.