

Customer Tips

dc06cc0399
September 12, 2006

... for the user

Install Preparation for SMARTsend in Windows 2003 Server Environments

Purpose

This document provides the step-by-step configuration of a Windows 2003 Server you need to perform before installing SMARTsend. It includes installing and configuring Web server services, and ASP.net. The audience for this document is system administrators or IT professionals.

The information in this document provides the minimal processes needed to prepare to install SMARTsend. No special circumstances are addressed. See the documentation included with the SMARTsend software for detailed preparation and installation information.

Use this document as a guide. Every network environment is different. This document may not address your environment, but should provide enough information to guide you through the default install of SMARTsend.

Prerequisite

Administrator rights are required to perform the processes in this document.

This document applies
to this **Xerox** product:

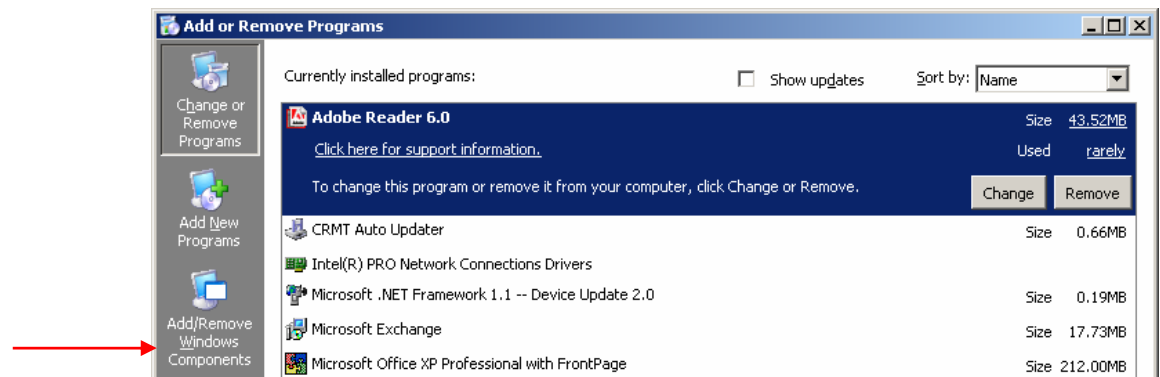
x	SMARTsend
---	-----------

Installing Web Server Services for SMARTsend

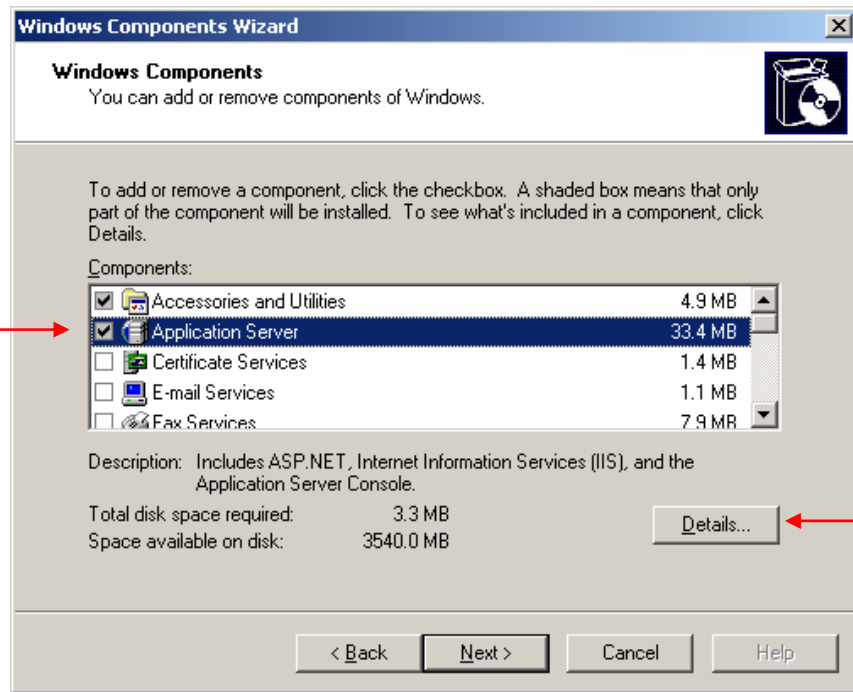
1. Select **Start,>All Programs>Control Panel>Add or Remove Programs**.



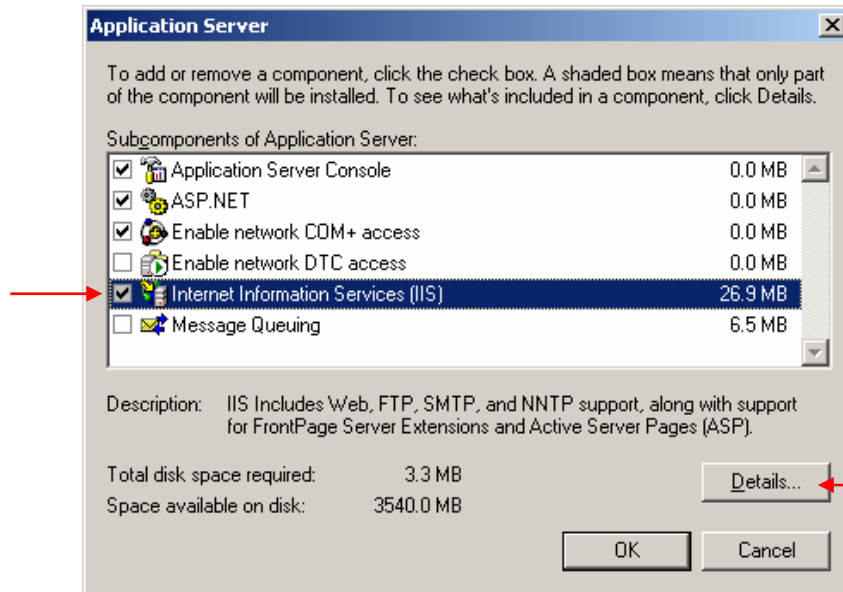
2. Select **Add/Remove Windows Components**.



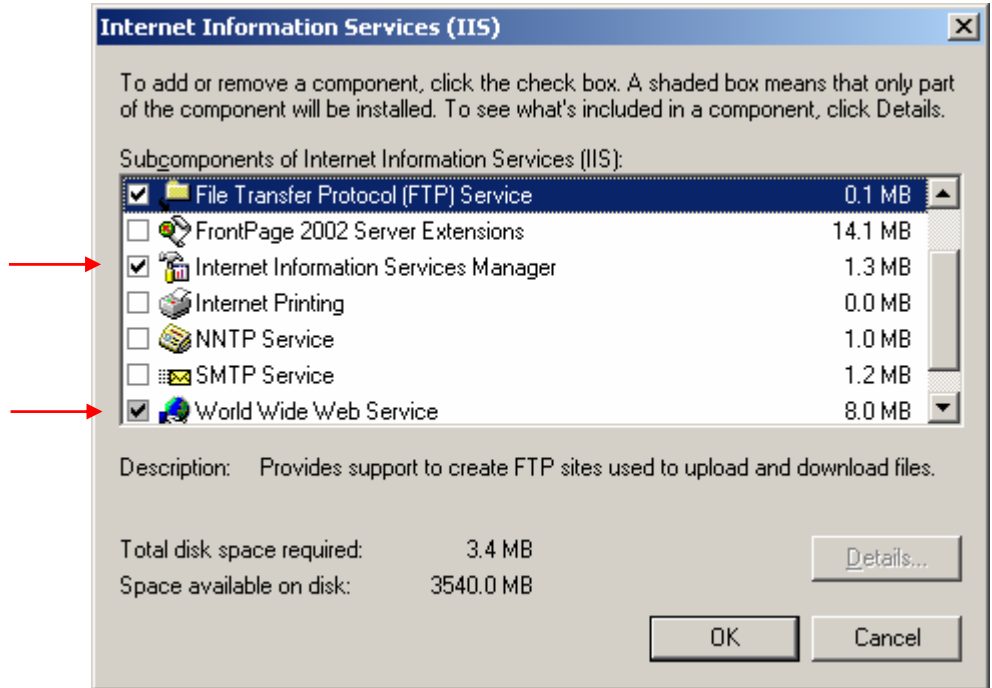
3. Highlight **Application Server** and click **Details**.



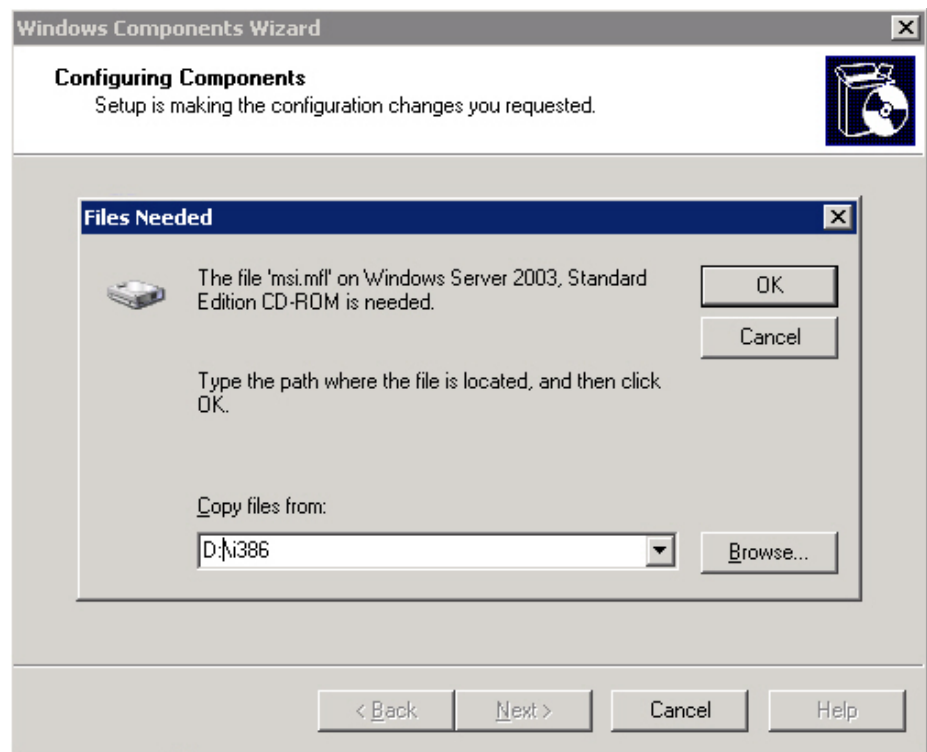
4. Verify that ASP.NET is checked, or check it. Highlight the **Internet Information Services (IIS)** option and click **Details**.



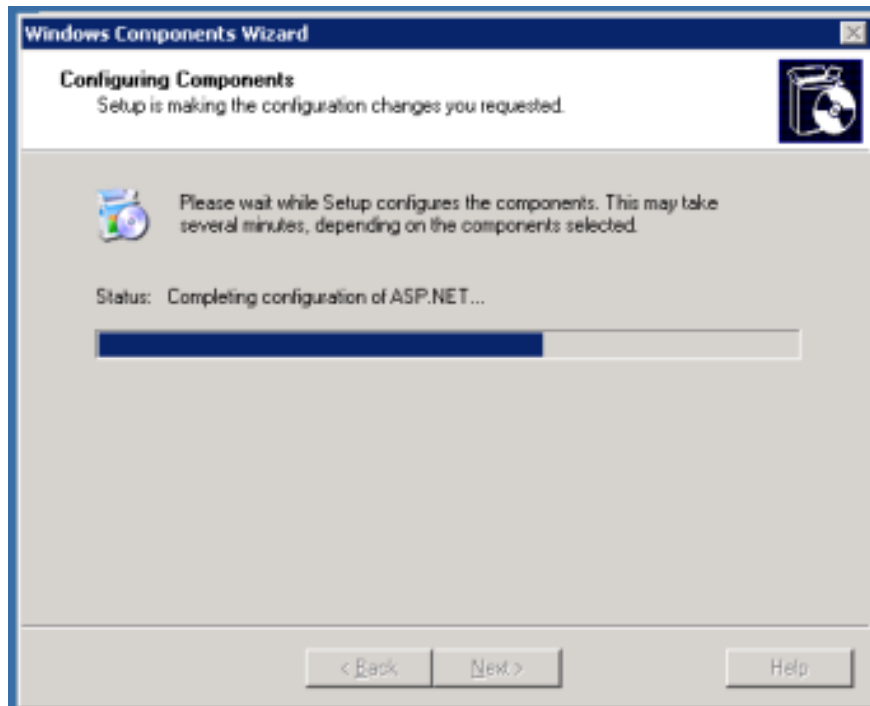
5. Check the **Internet Information Services Manager** and the **World Wide Web Service** options. If you are using FTP (optional), check **File Transfer Protocol (FTP) Service**. Click **OK**.



6. When the Windows Components window reappears, click **Next**.
7. If the i386 files for Windows 2003 are loaded on the server, browse to those files or insert the Windows 2003 Server CD and click **OK**.



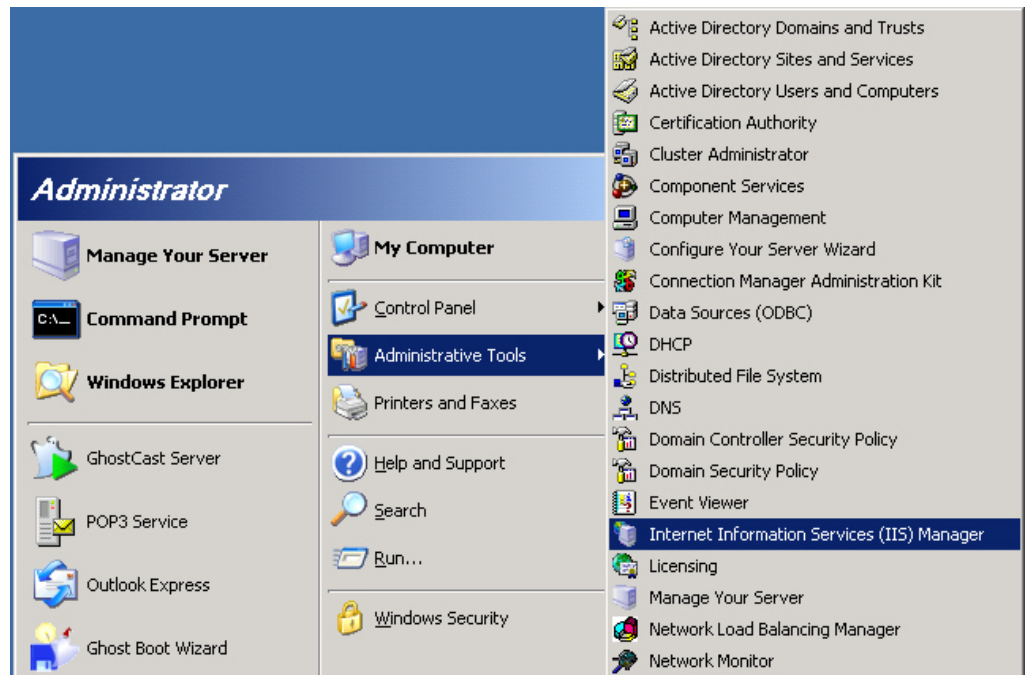
- The components you selected begin to load.



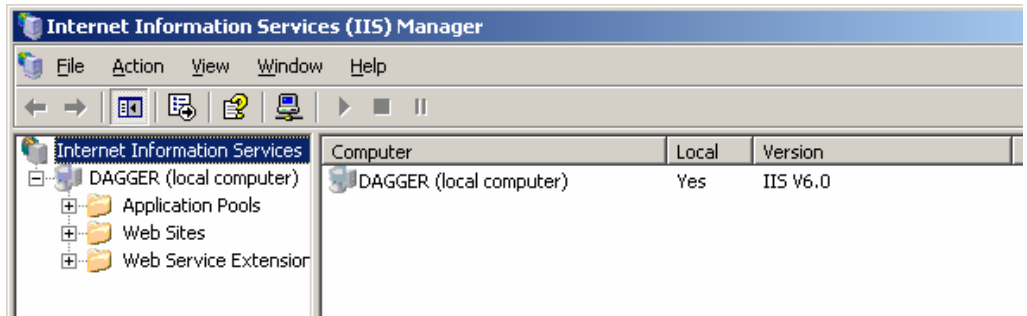
- When the Wizard is complete, click **Finish**.
- Close **Add or Remove Programs**.

Configuring the WWW Service

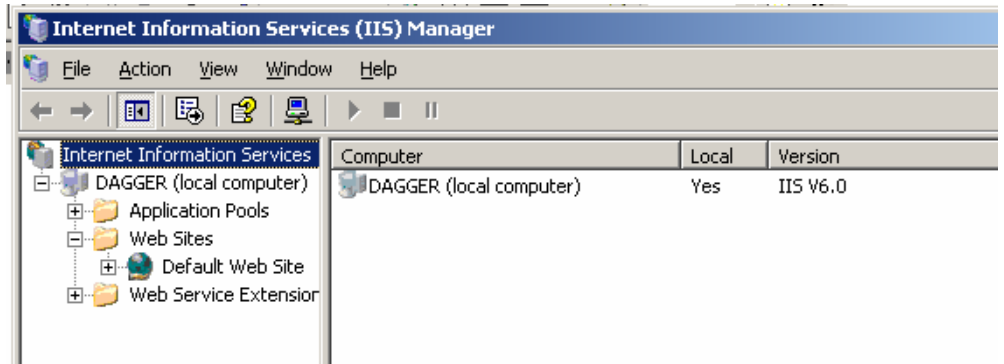
- Select **Start>All Programs>Administrative Tools>Internet Information Services (IIS) Manager**.



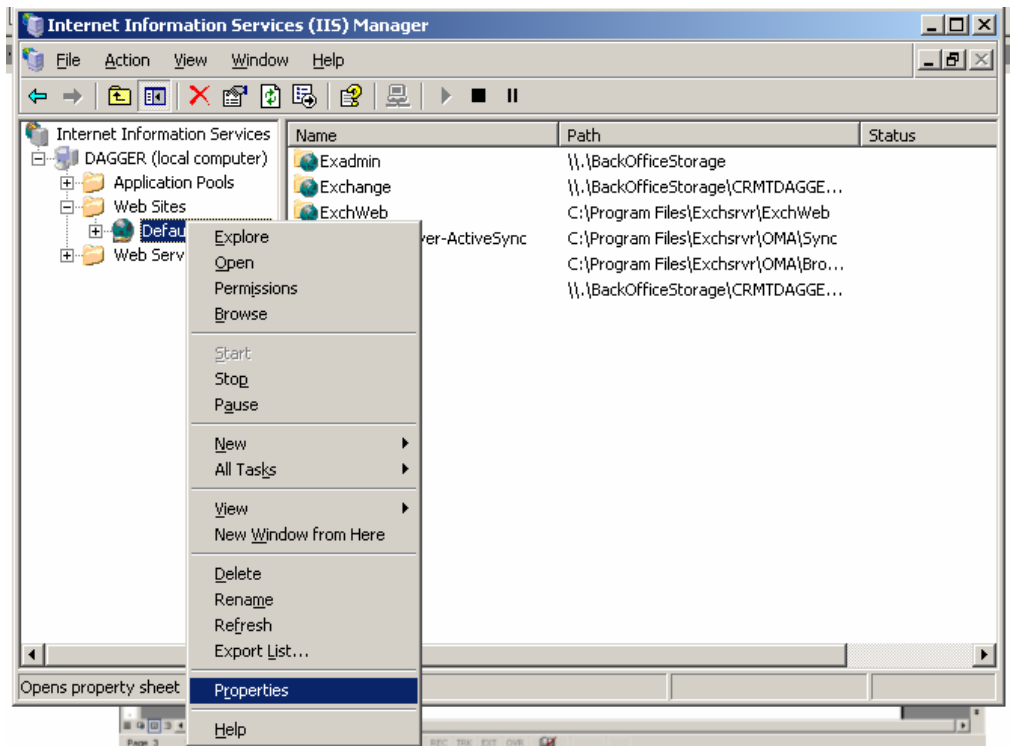
- Expand the **local computer**.



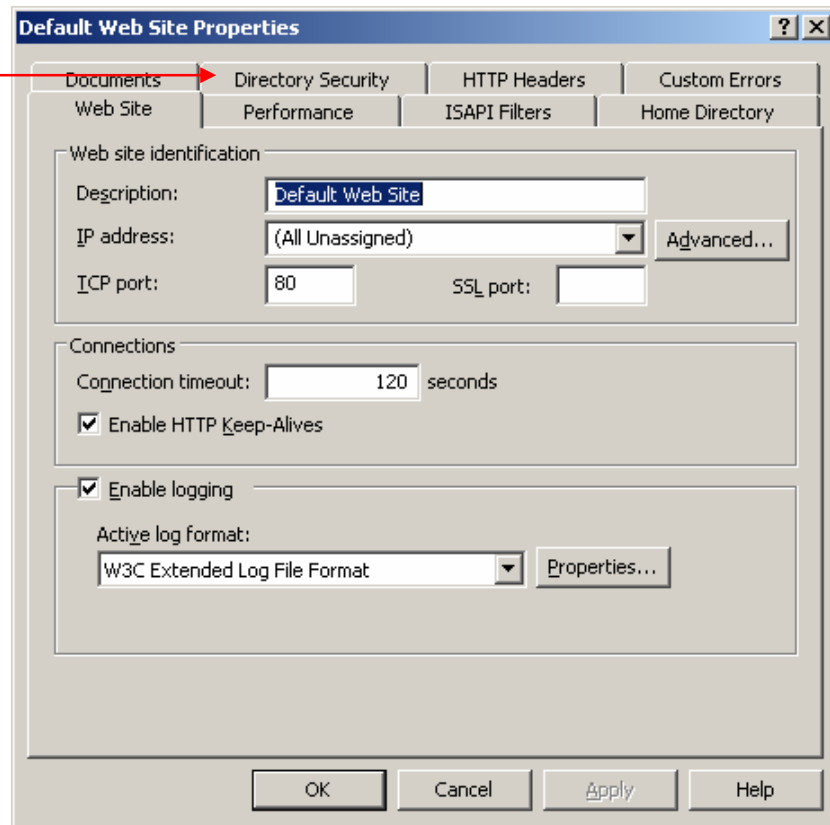
- Expand the **Web Sites**.



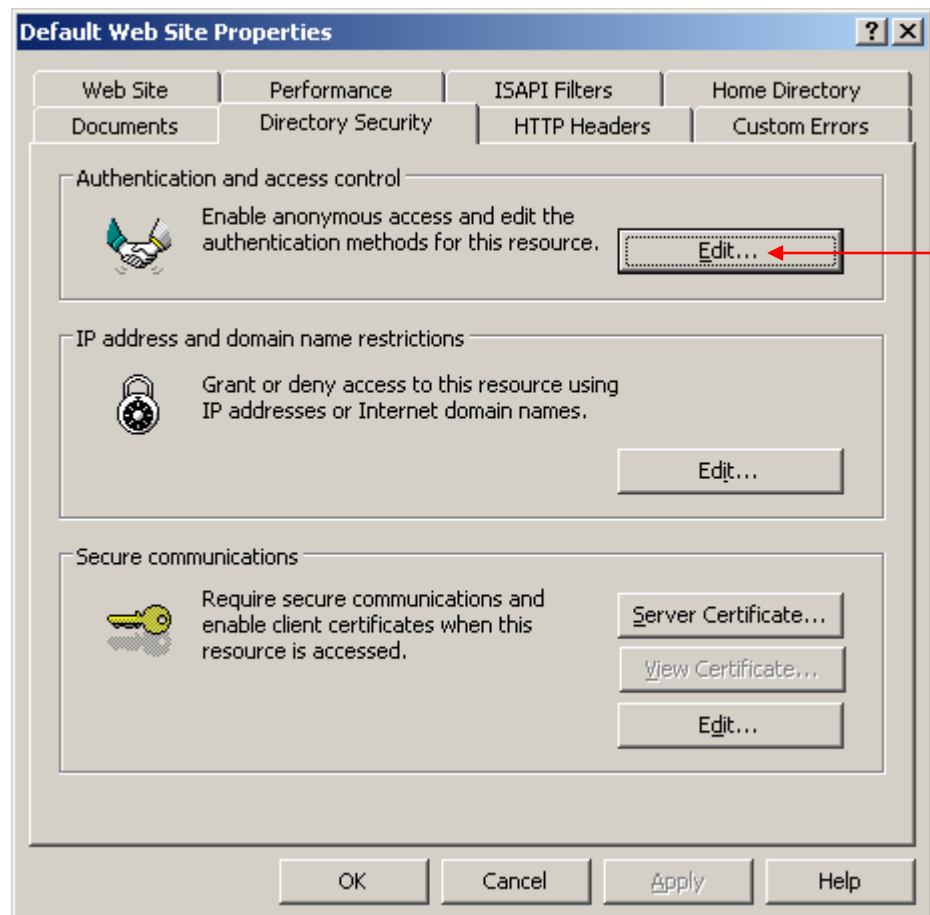
- Select **Default Web Site**. Right click and select **Properties**.



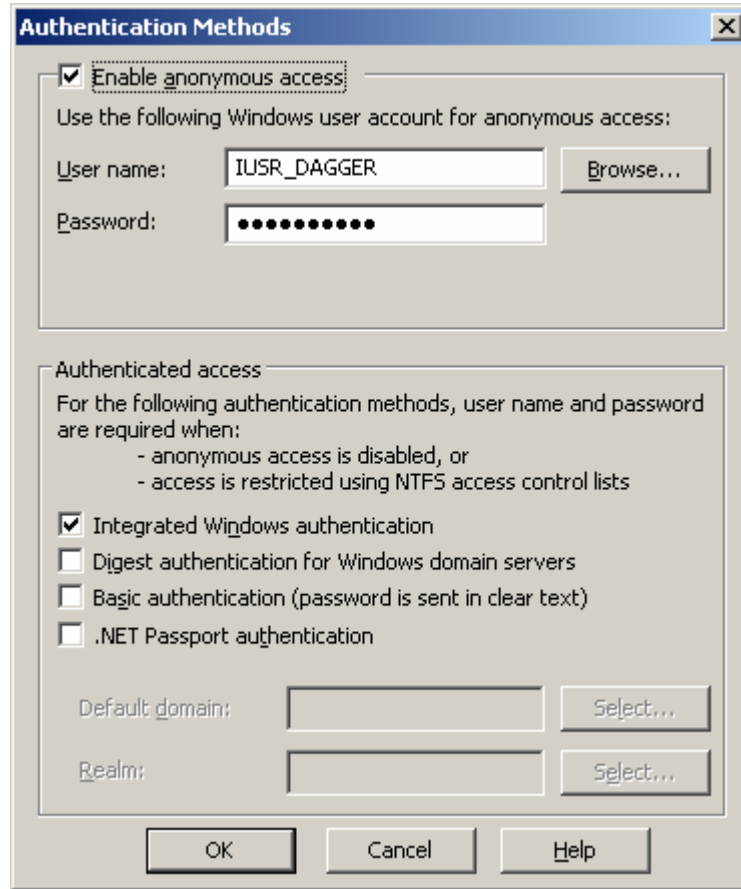
5. Select the **Directory Security** tab.



6. Click **Edit** in the **Authentication and access control** section.



7. Verify the **Integrated Windows authentication** box is checked, or check it. Click **OK** then click **OK** again.



The Windows 2003 server is now configured to install SMARTsend.

Additional Information

This Customer Tip provided by Xerox Digital Network Solutions Center.

Xerox Customer Support welcomes feedback on all documentation - send feedback via e-mail to: USA.DSSC.Doc.Feedback@mc.usa.xerox.com.

You can reach Xerox Customer Support at 1-800-821-2797 (USA), TTY 1-800-855-2880 or at <http://www.xerox.com>.

Other Tips about Xerox multifunction devices are available at the following URL: <http://www.office.xerox.com/support/dctips/dctips.html>.

XEROX®, The Document Company®, the digital X®, and all Xerox product names are trademarks of XEROX CORPORATION. Other trademarks belong to their respective owners.

Copyright © XEROX CORPORATION 2006. All Rights Reserved.

XEROX®