

Customer Tips

dc02cc0312
October 16, 2003

... for the user

Installing a Multifunction Device Windows 2000 Print Driver Under a Windows NT Print Queue

Purpose

This document is an adaptation of Microsoft Knowledge Base article Q263090. It contains the procedure to install Document Centre and WorkCentre/WorkCentre Pro Windows 2000 print drivers for sharing from a Windows NT 4.0 print server. When you complete this procedure, the Windows 2000 driver is available to Windows 2000 clients.

NOTE: Some Xerox multifunction devices require that you use a specific type of driver when you perform this procedure.

- If you have a Document Centre use only the NT Standard print drivers. Window 2000 print drivers will not share from a print queue created with a Document Centre NT Enhanced print driver.
- WorkCentre's only have one type of driver, referred to as a XPD (Xerox Printer Driver) or Xerox User Interface driver.

This document applies to these **Xerox** products:

x	WC Pro 32/40 Color
x	WC Pro 65/75/90
x	WC Pro 35/45/55
x	WC M35/M45/M55
x	DC 555/545/535
x	DC 490/480/470/460
x	DC 440/432/425/420
x	DC 340/332
x	DC 265/255/240
x	DC 230/220
	DCCS 50

Pre-Installation Requirements

- On the Windows NT server, log on as an Administrator and install a Document Centre Standard NT or WorkCentre/WorkCentre Pro NT driver(s). Enable the Document Centre or WorkCentre/WorkCentre Pro for sharing and configure features as desired.
- On a Windows 2000 system, log on as an Administrator and install a Windows 2000 print driver for the same multifunction device with the same PDL (PostScript or PCL). This prepares you to load the Windows 2000 drivers onto the NT share later. For example, if you load an Document Centre NT Standard 440 PS driver version 1.3.12.2 on a NT server, you would load a Windows 2000 Standard PS driver on a Windows 2000 client.

Conventions Used in this Document

- Successive selections in a menu path appear in square brackets, separated by colons, for example: Select [**File:Open**].
- Any verbatim element of an application, such as, button names, field names, menu selections, and dialog box names, appear in bold type, for example: Click **Continue**.
- Buttons are clicked. Menu items or other elements of an application are selected, for example: Select [**Start:Run**], when prompted click **OK**.

Installing the Driver to Share

Use the same Windows 2000 system referenced in the "Pre-Installation Requirements" section, to install a shared Windows 2000 print driver on the Windows NT print server.

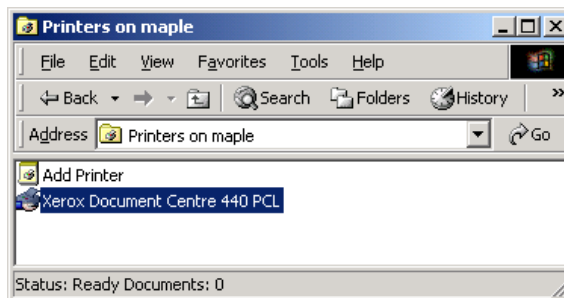
Ensure that the Windows 2000 print driver you wish to share has been installed locally on the Windows 2000 system before proceeding.

NOTE: To perform this procedure, you must have Administrator rights to the NT server.

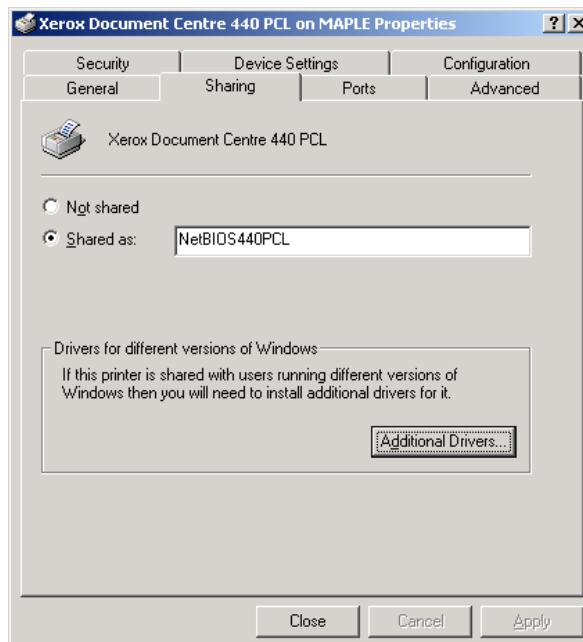
1. Logon as an Administrator on the Windows 2000 system.
2. Double-click on **My Network Places** and browse the network for the Windows NT server where you wish to install the drivers.

The shared printers on the print server and the Printers folder are displayed.

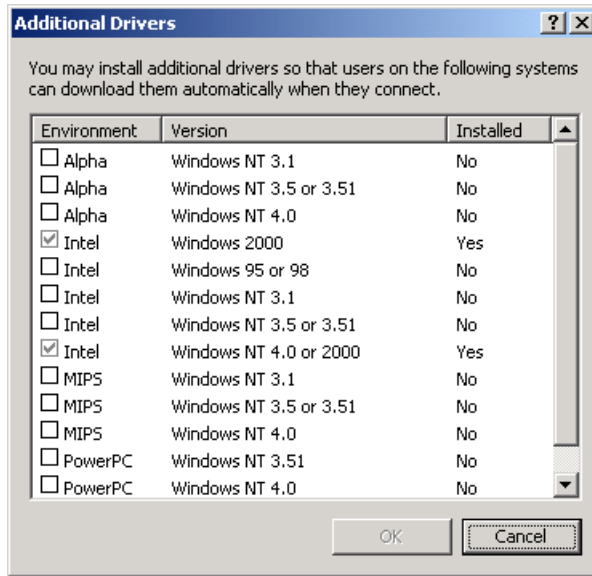
2. Double-click the **Printers** folder on the print server to open it.



3. Right-click on the icon of the printer object you installed on the NT server referenced in the "Pre-Installation Requirements" section. Select **Properties**, then the **Sharing** tab. On the **Sharing** tab, click **Additional Drivers**.



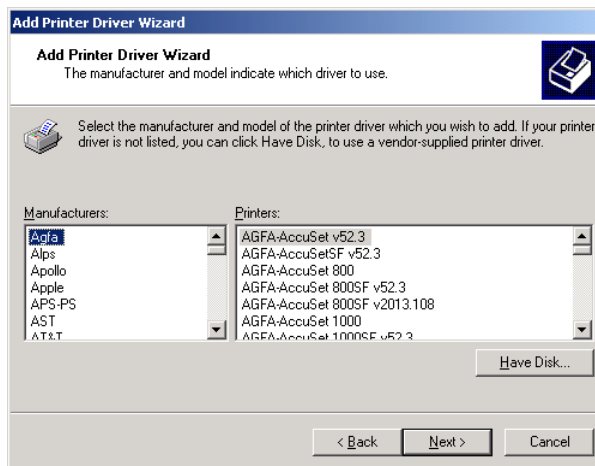
4. Check the **Intel/Windows 2000** box(es), then click **OK**.



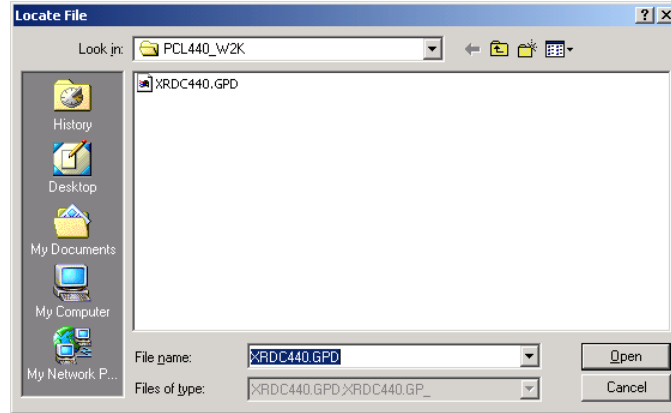
5. When the **Add Printer Driver Wizard** appears, click **Next**.



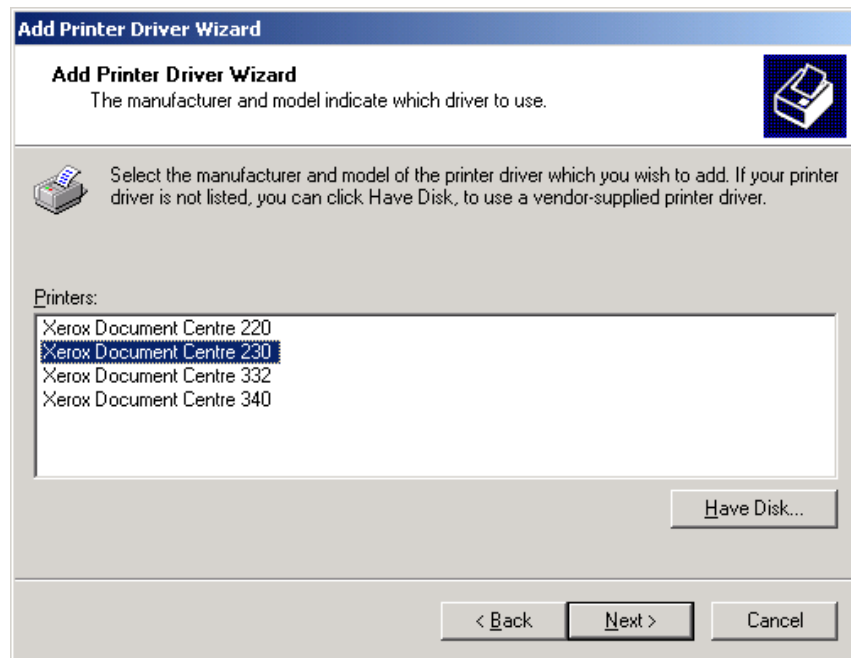
6. Click **Have Disk**.



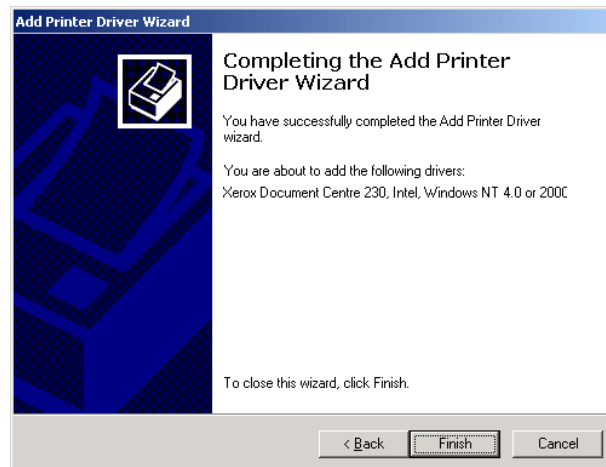
- Click **Browse** in the **Printer Drivers for Windows NT 4.0 x86** dialog box and locate the directory where you stored the Document Centre or WorkCentre/WorkCentre Pro Windows 2000 drivers. Click **Open**, then click **OK**.



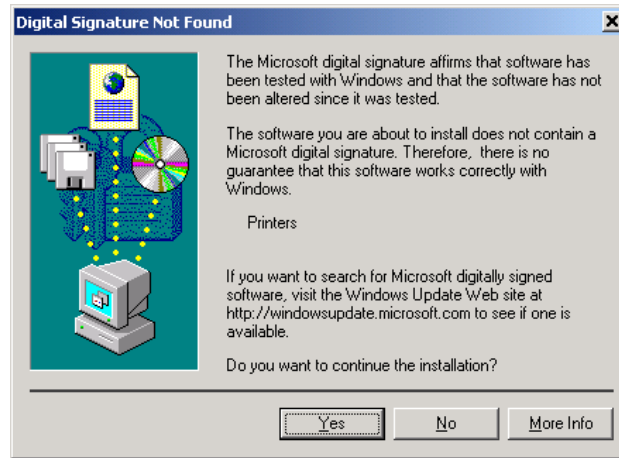
- From the list, select the Document Center or WorkCentre/WorkCentre Pro model that matches the driver currently installed on the NT server, and click **Next**.



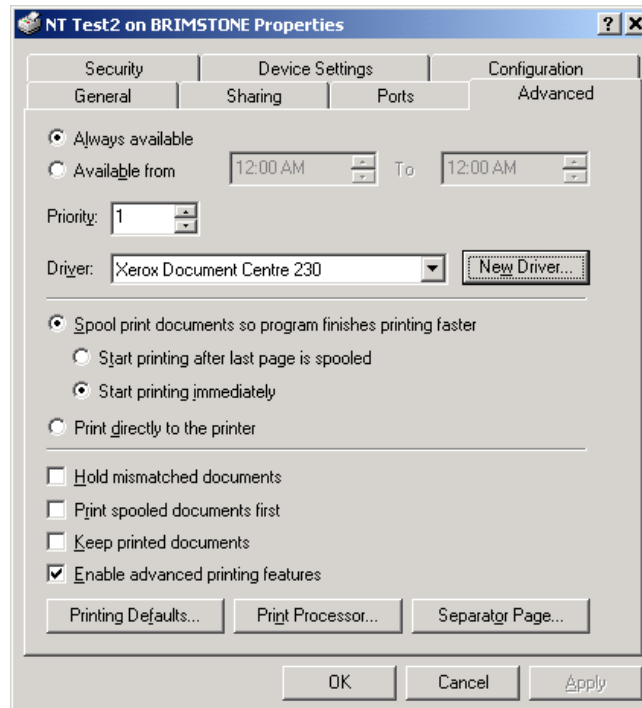
- Click **Finish**.



10. If it appears, click **Yes** if the **Digital Signature Not Found** dialog box appears.



11. Click **OK** on the **Printer Properties** dialog to complete the process.



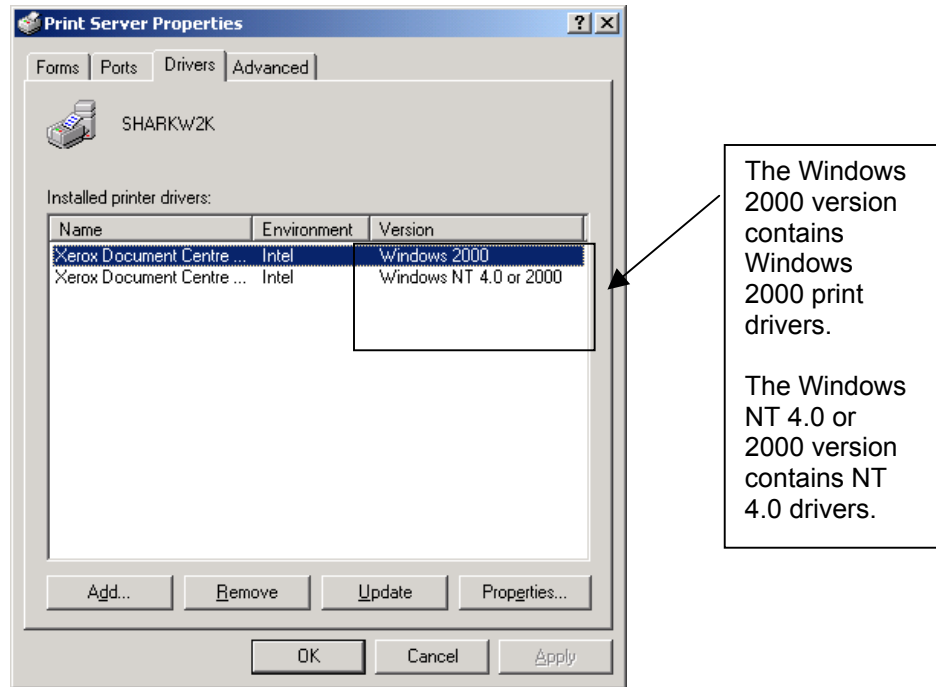
12. On the Windows 2000 system, right-click on the icon of the same printer object on the NT server you installed in the "Pre-Installation Requirements" section, and select **Properties**.
13. Select the **Configuration** tab and set the printer configuration as desired. Click **OK**. The shared printer on the NT server is now setup to share the Windows 2000 drivers.

Verification of the Driver Share

Open the Printers folder of the remote Windows NT 4.0 server to verify the Windows 2000 shared driver is installed.

To Verify Using a Windows 2000 System

Select [**File:Server Properties**], then select the **Drivers** tab. The installed print drivers and their properties are displayed.



To Verify Using a Windows NT 4.0 System

1. Run Regedt32.exe and navigate to the registry of the Windows NT 4.0 server. Open the following key:
HKEY_LOCAL_MACHINE\SYSTEM\CurrentControlSet\Control\Print\Environments\Windows NT x86\Drivers
2. Under this key, you should see the following two subkeys listing the drivers currently installed: Version-2 is for NT 4.0 drivers, Version-3 is for 2000 drivers
3. Expand the Version-2 and Version-3 folders to see the list of installed printers.

Additional Information

Xerox Customer Service welcomes feedback on all documentation - send feedback via e-mail to: USA.DSSC.Doc.Feedback@mc.usa.xerox.com.

You can reach Xerox Customer Support at 1-800-821-2797 (USA), TTY 1-800-855-2880 or at <http://www.xerox.com>.

Other Tips about Xerox multifunction devices are available at the following URL: <http://www.xerox.com/DocumentCentreFamily/Tips>.

XEROX®, The Document Company®, the digital X®, and all Xerox product names are trademarks of XEROX CORPORATION. Other trademarks belong to their respective owners.

Copyright © XEROX CORPORATION 2003. All Rights Reserved.

THE DOCUMENT COMPANY
XEROX®