

# Customer Tips

dc01cc0263  
July 23, 2003

*... for the user*

## *Configuring GroupWise and Exchange LDAP Environments for a Xerox Multifunction Device*

### Purpose

This document describes the LDAP server configurations required to integrate Xerox multifunction devices into GroupWise 5.5 and Exchange 5.5 environments. A description of Xerox multifunction device LDAP configuration is also included.

### Configuring LDAP Servers

#### Configuring GroupWise and LDAP

This section describes the implementation of GroupWise in a NetWare environment. In addition to enabling the LDAP NLM (nldap.nlm) on the NetWare network, GroupWise requires two major configuration tasks:

- Allow LDAP public access in the GroupWise Internet Agent (GWIA) object.
- Designate a proxy user in the LDAP group object.

The GroupWise Internet Agent (GWIA) must be installed and running. GWIA is installed by default when GroupWise is installed.

**This document applies to these Xerox products:**

x	WC Pro 32/40 Color
x	WC Pro 65/75/90
x	WC Pro 35/45/55
x	WC M35/M45/M55
x	DC 555/545/535
x	DC 490/480/470/460
x	DC 440/432/425/420
	DC 340/332
	DC 265/255/240
	DC 230/220
	DCCS 50

Using NWAdmin or ConsoleOne, open the GWIA object, and click **LDAP Settings**.

1. Make sure that the **Enable LDAP service** box is checked. Click **OK** to save the settings, if necessary (see Figure 1).

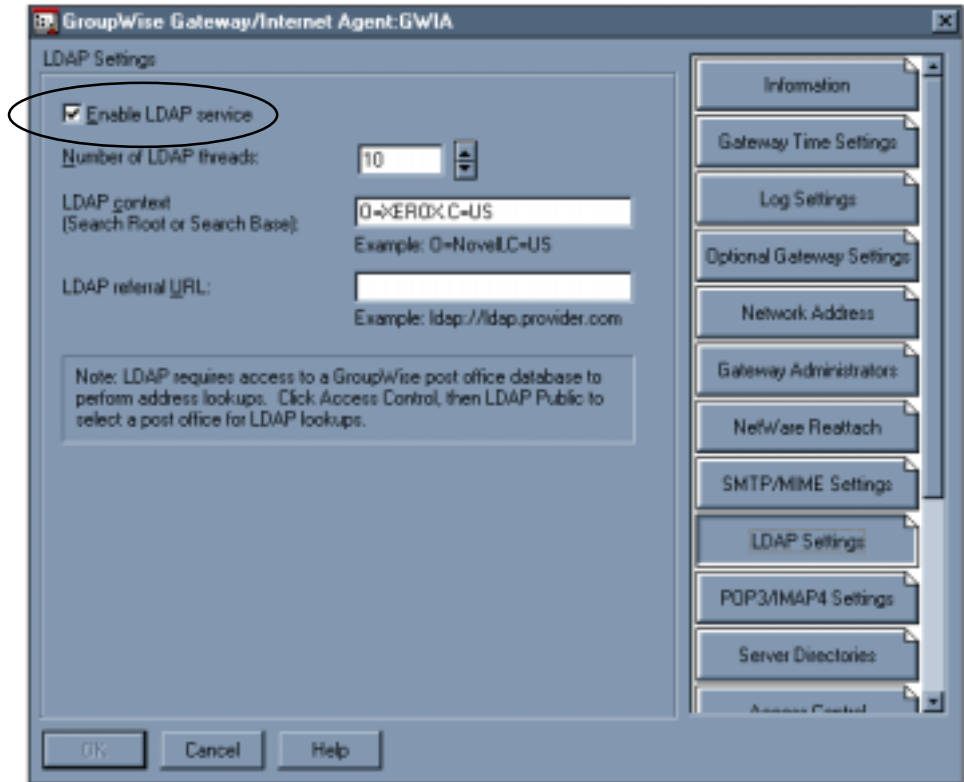


Figure 1

2. To configure public access, click **Access Control** (see Figure 2).

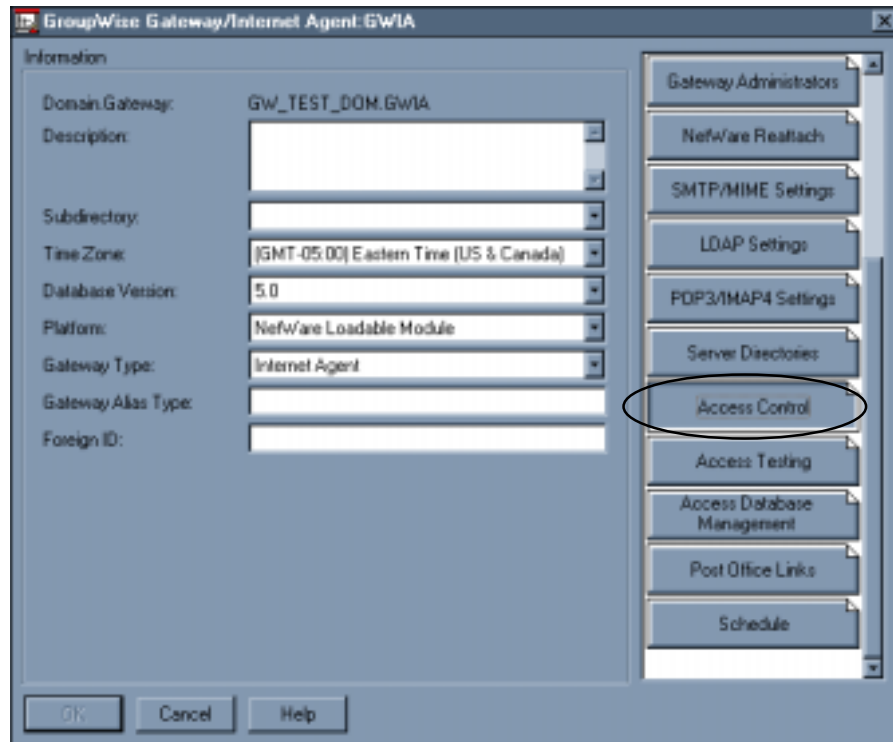


Figure 2

3. On the **Access Control** properties page, click **LDAP Public** (see Figure 3)

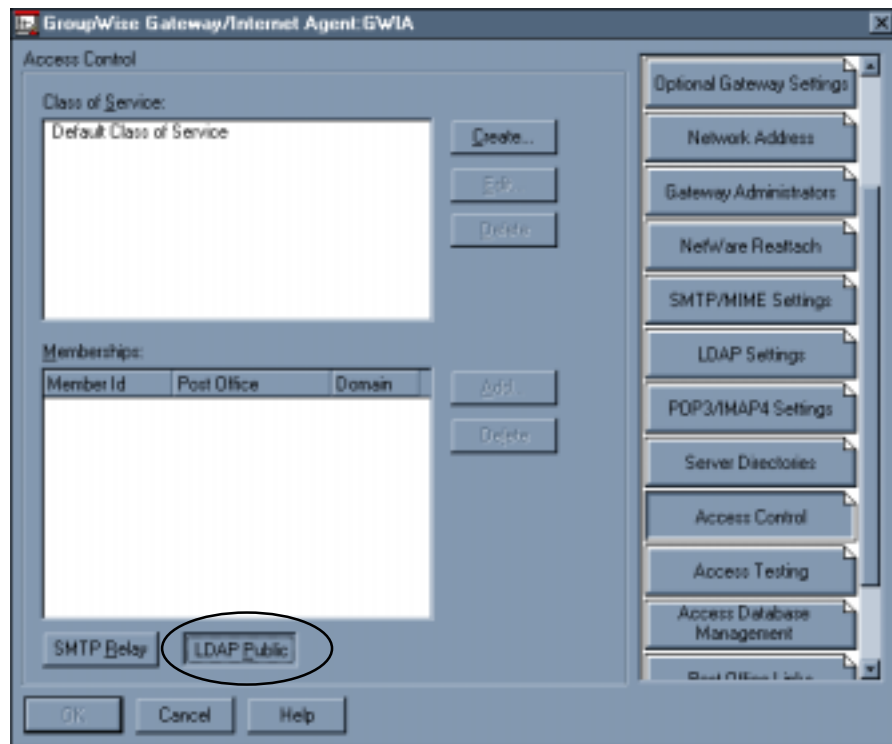


Figure 3

4. On the **LDAP Public Access** properties sheet, verify that **Allow access** is enabled (see Figure 4).

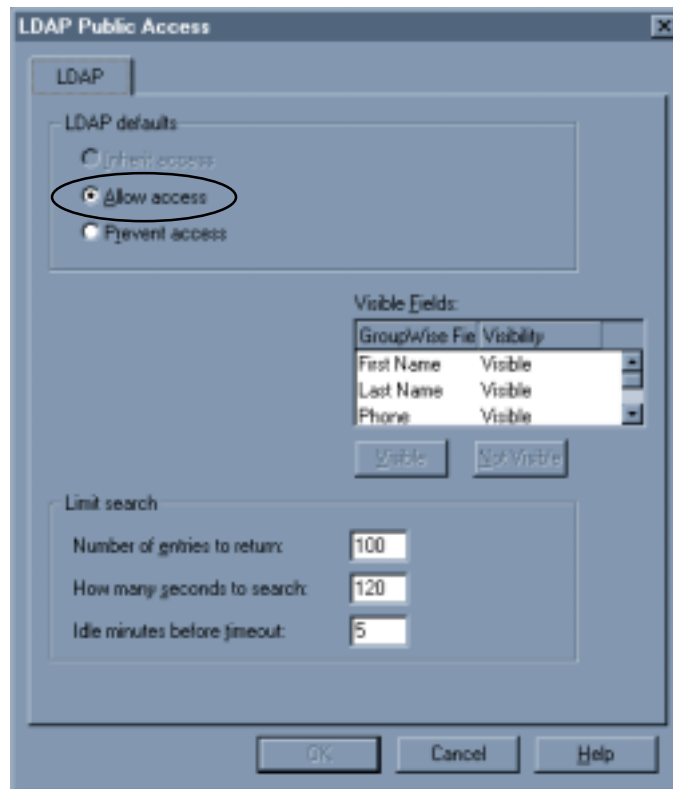


Figure 4

Next, designate a proxy user in the LDAP Group object. You cannot use NWAdmn32 for this task. You must use ConsoleOne. (Some users have reported success with the Windows 95 version of NWAdmin.)

1. Open the **LDAP Group** object.
2. Select the **General** tab (see Figure 5).
3. Enter a name for the **Proxy Username** or browse to your NDS directory and select one. The proxy user must have the rights to Read and Compare user objects.

Also, the proxy user should have rights appropriate to your security level. A user name with extended rights or equivalencies allows LDAP to return search results with additional information you may not wish to transmit over the network. The Xerox multifunction device does not use or store additional information (for example, trustees).

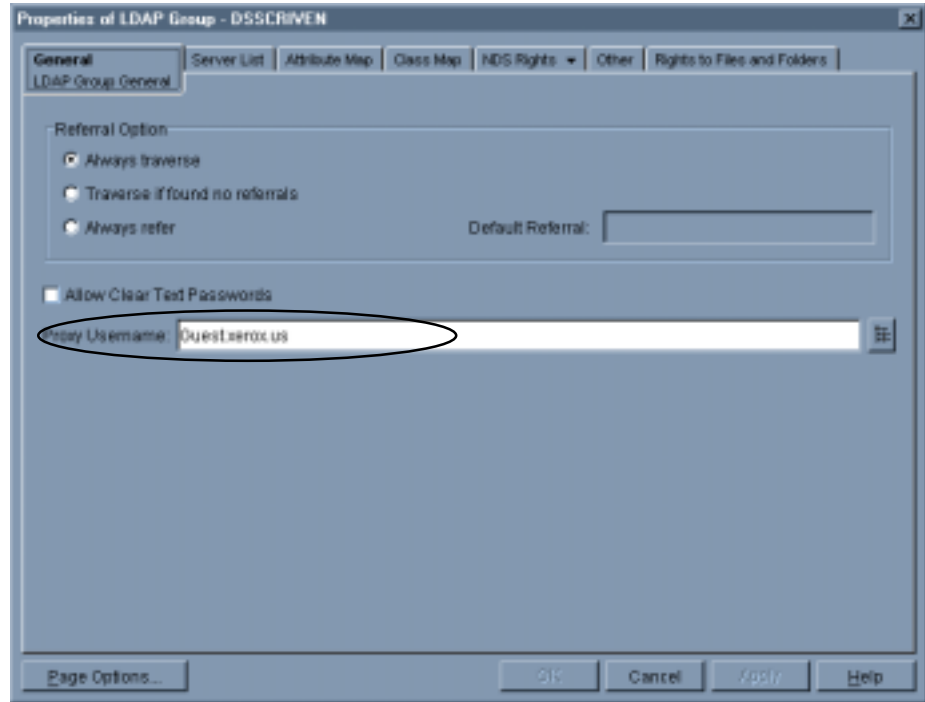


Figure 5

## Configuring LDAP on a Microsoft Exchange 5.5 Email Server

This section illustrates the procedure to enable the property, "Allow anonymous access," required to configure LDAP on a Microsoft Exchange 5.5 Email Server.

1. Open **Microsoft Exchange 5.5 Administrator** (\exchsrvr\bin\ADMIN.EXE). See Figure 6.
2. Expand the domain (**TRAINING1** in the Figure 6), then expand **Configuration** and **Protocols**. Double-click the LDAP protocol.

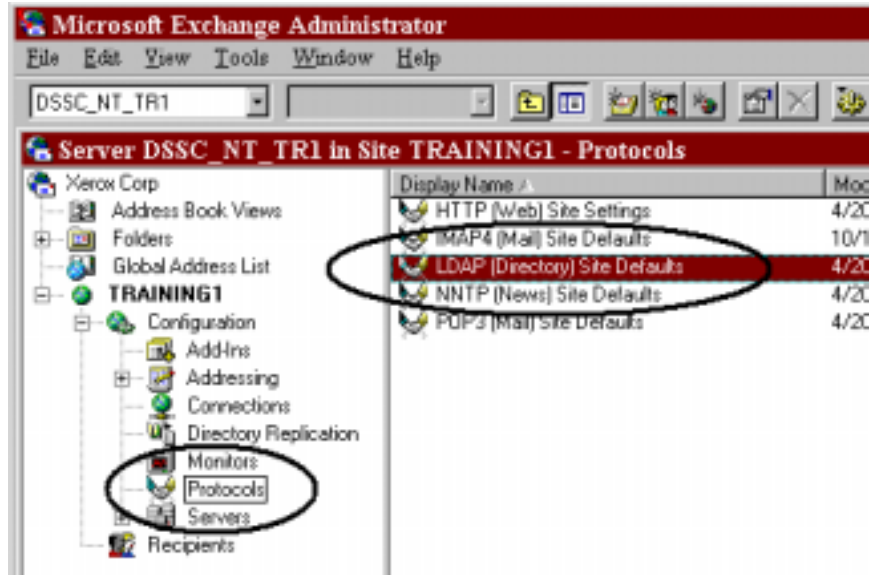


Figure 6

3. Click the **Anonymous** tab (see Figure 7). Ensure that **Allow anonymous access** is checked.

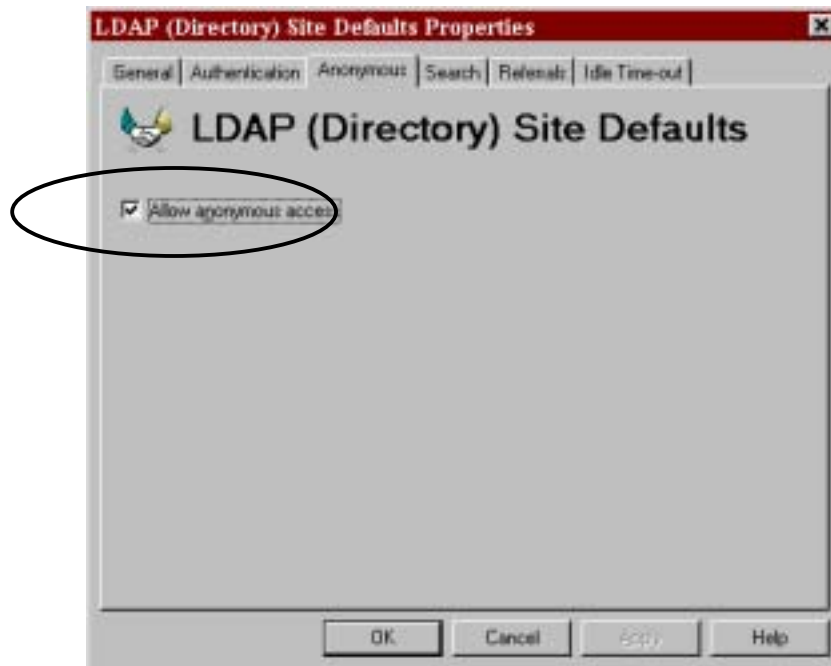


Figure 7

4. Click **OK** to complete the procedure.

# Configuring the Xerox Multifunction Device for LDAP

The Xerox multifunction device must have the following minimum LDAP configuration:

- A domain name entered in the TCP/IP protocol configuration (see Figure 8)

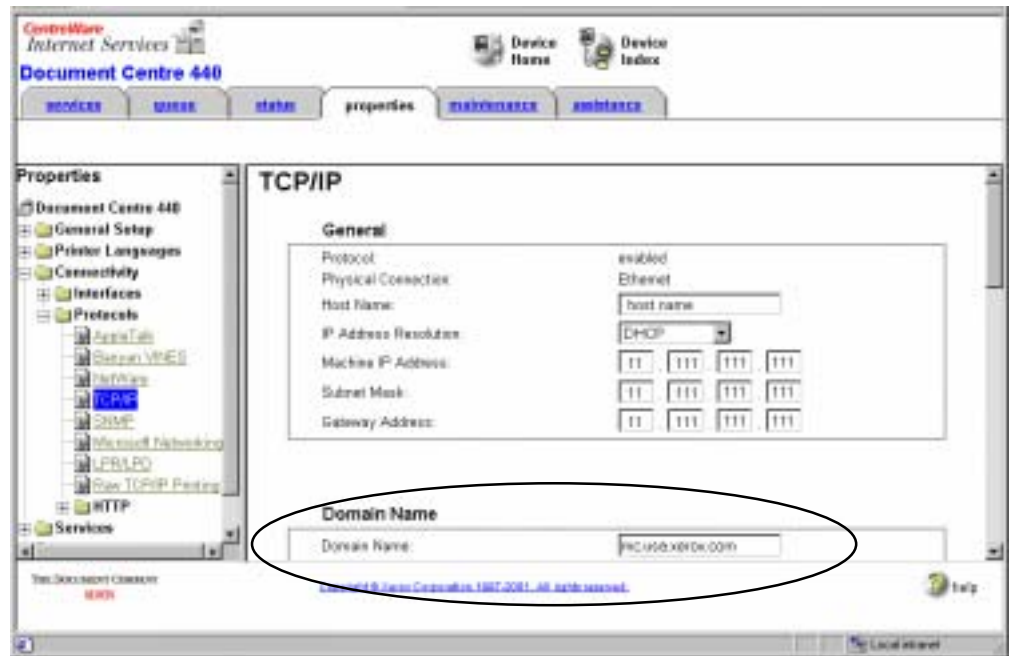


Figure 8

- An IP address or resolvable host name for the LDAP server
- Search timeout value
- Search name order selection

In addition, you may configure an alternate LDAP server address, search directory root entry, login name and password, and maximum search results, if desired or required.

Use the Xerox multifunction device's Web server to configure LDAP access on the multifunction device.

1. Access the Xerox multifunction device's home page and click on the **Properties** link. Perform one of the following:
  - DC 400 serie's devices: expand **Services** and **Internet Messaging**, and select **LDAP Directory** (see Figure 9).
  - DC 500 serie's devices: expand Connectivity and Protocols, and select LDAP Directory.
2. In the **Server Information** section, enter the IP address or host name of the LDAP server. If you have an additional or alternate LDAP server, you may enter the host information for that server.



Figure 9: DC 400 Series Web Interface

3. In the **Optional Information** section, no entries other than the defaults are normally necessary.
  - **Search Directory Root** allows you to limit the LDAP search.
  - Enter a **Login Name** for the Xerox multifunction device to access the LDAP server. Format may be login name or domain\login name.

**Note:** In a Novell environment, enter the LDAP proxy user login name created in NWADMIN.

- **Maximum Number of Search Results** has a default value of 25, but you can change it to any value from 5 to 100. This entry represents the number of matches the Xerox multifunction device returns after a successful search.
  - You can set the **Search Timeout** to a value from 5 to 100 seconds; 30 seconds is the default. Alternatively, you may select **Wait LDAP Server Limit**.
  - **LDAP Referral**. Allows the Xerox multifunction device to function in an environment that uses referrals.  
**NOTE:** Even in an environment that uses referrals, if you do not receive the expected returns you may need to disable the LDAP Referral checkbox. Firewalls or authentication on other servers can block proper function of this option.
  - **Search Name Order** allows you to change the algorithm the Xerox multifunction device uses for the LDAP search. The default is **Common Name**, that is, the NDS **CN** attribute. To allow users to search by surname (last name) and given name (first name), click **Surname and Given Name**.
4. After configuring the required and optional LDAP values, click **Apply New Settings**, enter the Xerox multifunction device's administrative login values, and click **OK**.

This completes the Xerox multifunction device's configuration for LDAP searches.

## Additional Information

The Xerox multifunction device uses LDAP v3 to access LDAP-enabled directories and complies with RFC2251, RFC2252, RFC2253, RFC2254, RFC2255 and RFC2256 (<ftp://ftp.isi.edu/in-notes/>). Clients with permission to use Lightweight Directory Access Protocol (LDAP) are able to browse, read, and search directory listings. LDAP is a lightweight version of the X.500 (ISO 9594-2) standard, and works only with Transmission Control Protocol/Internet Protocol (TCP/IP) connections.

For more details about Microsoft Exchange, see the Microsoft LDAP Troubleshooting Guide at: <http://www.microsoft.com/TechNet/commerce/ldaptsho.asp>

For more information about basic configuration and troubleshooting tips for scan to email, authentication and LDAP, search documents at this address:  
<http://www.xerox.com/DocumentCentreFamily/Tips>

Xerox Document Centre Technical Support Operations welcomes feedback on all Customer Tips documentation - send feedback via e-mail to:  
[USA.DSSC.Doc.Feedback@mc.usa.xerox.com](mailto:USA.DSSC.Doc.Feedback@mc.usa.xerox.com).

You can reach Xerox Customer Support at 1-800-821-2797 (USA), TTY 1-800-855-2880 or at <http://www.xerox.com>.

Other Tips about Xerox multifunction devices are available at the following URL:  
<http://www.xerox.com/DocumentCentreFamily/Tips>.

XEROX®, The Document Company®, the digital X®, and all Xerox product names are trademarks of XEROX CORPORATION. Other trademarks belong to their respective owners.

Copyright © XEROX CORPORATION 2003. All Rights Reserved.

