

Customer Tips

... for the user

dc01cc0262
September 17, 2003

Routing Email Through a Notes Environment

NOTE: Information in this document applies to the following multi-function device software levels:

- WorkCentre Pros - all software levels
- DC 555/545/535 - EES software 14.52 and above
- DC 490/480/470/460 - ESS software 19.02.503 and above
- DC 440/432/425 - ESS software 3.0.7.1s and above

Purpose

The Xerox multifunction device's email function creates MIME encoded TIFF (or PDF-wrapped TIFF) attachments using SMTP. A Notes environment may not be enabled for SMTP. This document illustrates a Notes network that enables the activities in the following list:

- SMTP email sent from the multifunction device to a Notes client using NRCP.
- Email sent from the multifunction device routed through a Notes network to an external Internet address.

Network Configuration

Figure 1 contains Domain 1, Domain 2, and Domain 3. The figure illustrates:

- Domain 1 and 2 configured to enable multifunction device email SMTP traffic in a Notes NRCP environment.
- Domain 1 and 3 configured to route multifunction device email through a Notes network to an external Internet address.

This document applies to these **Xerox** products:

x	WC Pro 32/40 Color
x	WC Pro 65/75/90
x	WC Pro 35/45/55
	WC M35/M45/M55
x	DC 555/545/535
x	DC 490/480/470/460
x	DC 440/432/425/420
	DC 340/332
	DC 265/255/240
	DC 230/220
	DCCS 50

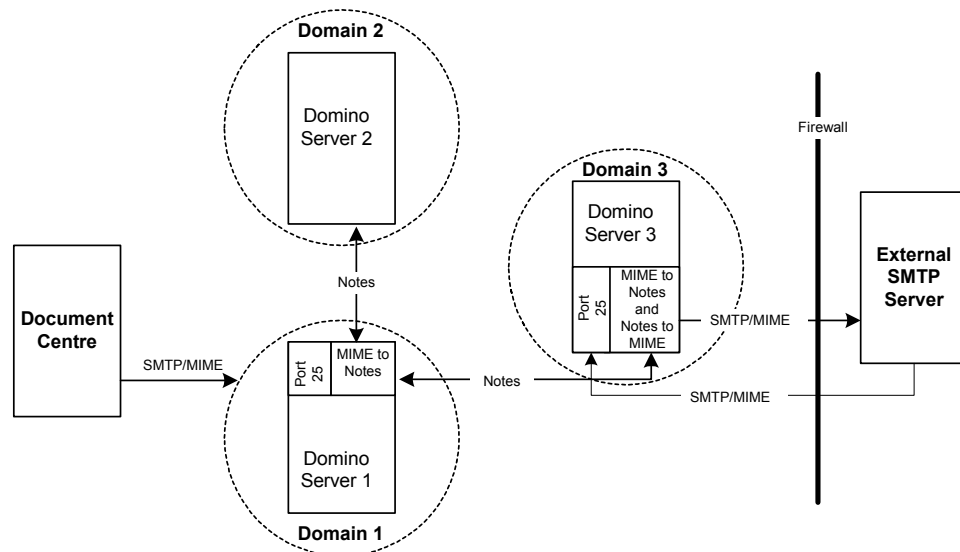


Figure 1: Network Configuration

The following sections describe the Domino server configurations in Figure 1.

Domino Server 1

- Configured to listen on Port 25 (**SMTP listener task** on the **Server** configuration page - see Figure 2).
 - Configured such that an email whose address contains foreign SMTP domain(s) (those domains external to the Lotus Notes network), is forwarded to Domino Server 3 to send to the Internet (see Figure 3 and 4).
 - Disables SMTP within the local Internet domain. This causes SMTP/MIME messages to convert to Notes format (NRCP). See Figure 5.
- Optional: You can configure the Router/SMTP to only allow connections from specific IP addresses. Enter the multifunction device address (or addresses for multiple multifunction devices) such that Port 25 only allows email from the multifunction device.

Domino Server 2

The configuration in Figure 1 only uses this server for Notes mail.

- Disables SMTP (see Figure 6).
- Defines a Lotus Notes Connection Document between Domino Server 1 and Domino Server 2 (see Figure 7 and 8).

Domino Server 3

This server maintains email in the Lotus Notes format unless it specifies an Internet address; in which case it converts the email to MIME.

- Configured as an inbound and outbound gateway server (see Figure 9 and 10).
- Listens on Port 25 and routes external mail to the external SMTP server (see Figure 9 and 10).

Configuration Screens

The following pages contain a set of figures based on Figure 1. These figures illustrate a foreign SMTP domain and connection to route external mail from Domino Server 2 to Domino Server 1 and out to the external SMTP server through Domino Server 3. Note the circled area(s) on each figure.

Multifunction Device System Configuration

The multifunction device is configured to direct email to Domino Server 1. No special steps are taken to connect to the Domino Server 1.

For basic configuration and troubleshooting tips for scan to email, authentication and LDAP search for other documents at this address:

<http://www.xerox.com/documentcentrefamily/tips>

Domino Server 1 - Enabling the SMTP Listener Task

Figure 2 illustrates the server document from the Lotus Notes Administrator for Domino Server 1. Domino Server 1 is configured to enable listening on Port 25. This setup allows the server to process external SMTP traffic and to route mail.

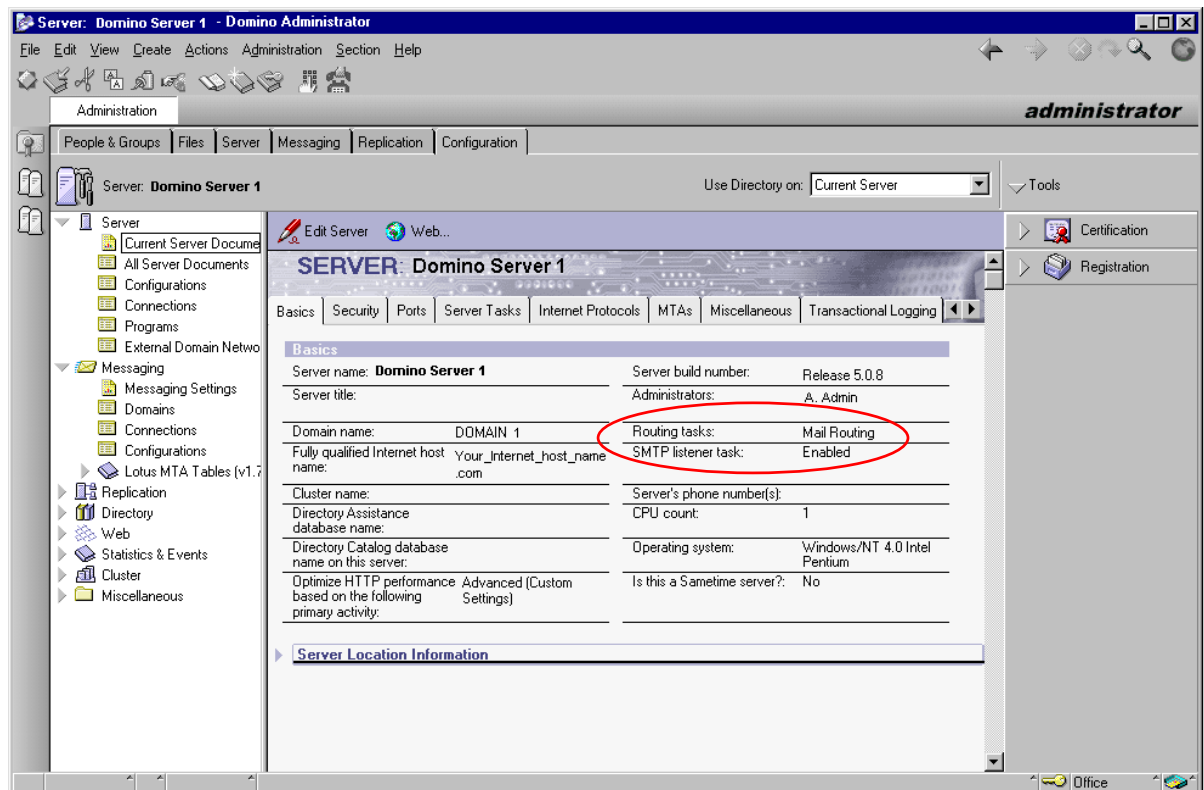


Figure 2: Domino Server 1 - SMTP listener task

Domino Server 1 - Foreign SMTP Domain Configuration

Figure 3 shows the Foreign SMTP Domain created on Domino Server 1. In this example, mail addressed to all foreign domains (*.*) routes to Domino Server 3 in Domain 3.

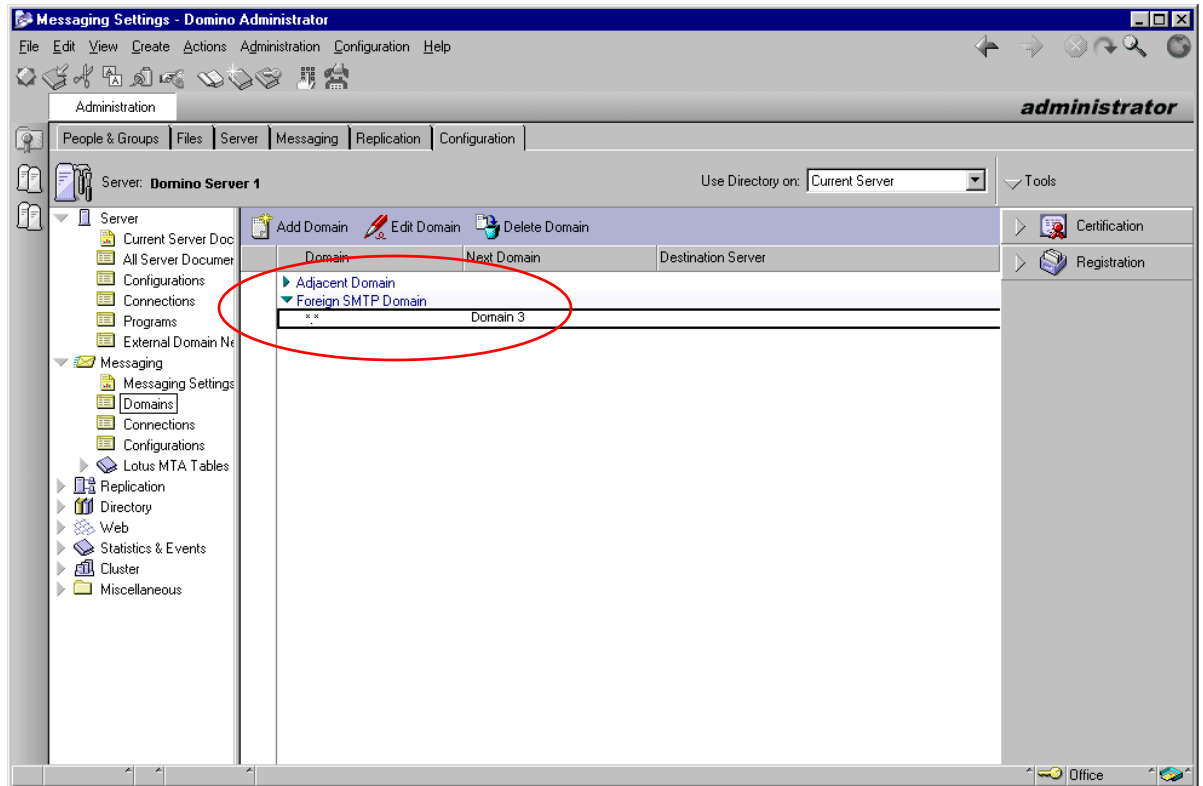


Figure 3: Domino Server 1 - Foreign SMTP Domain

Domino Server 1 - Creating Connection Documents

Figure 4 illustrates the Connection Documents for Domino Server 1. You create a Connection Document:

- For each unique Notes domain.
- To enable email with external domains (email bound for the Internet and SMTP) for routing.

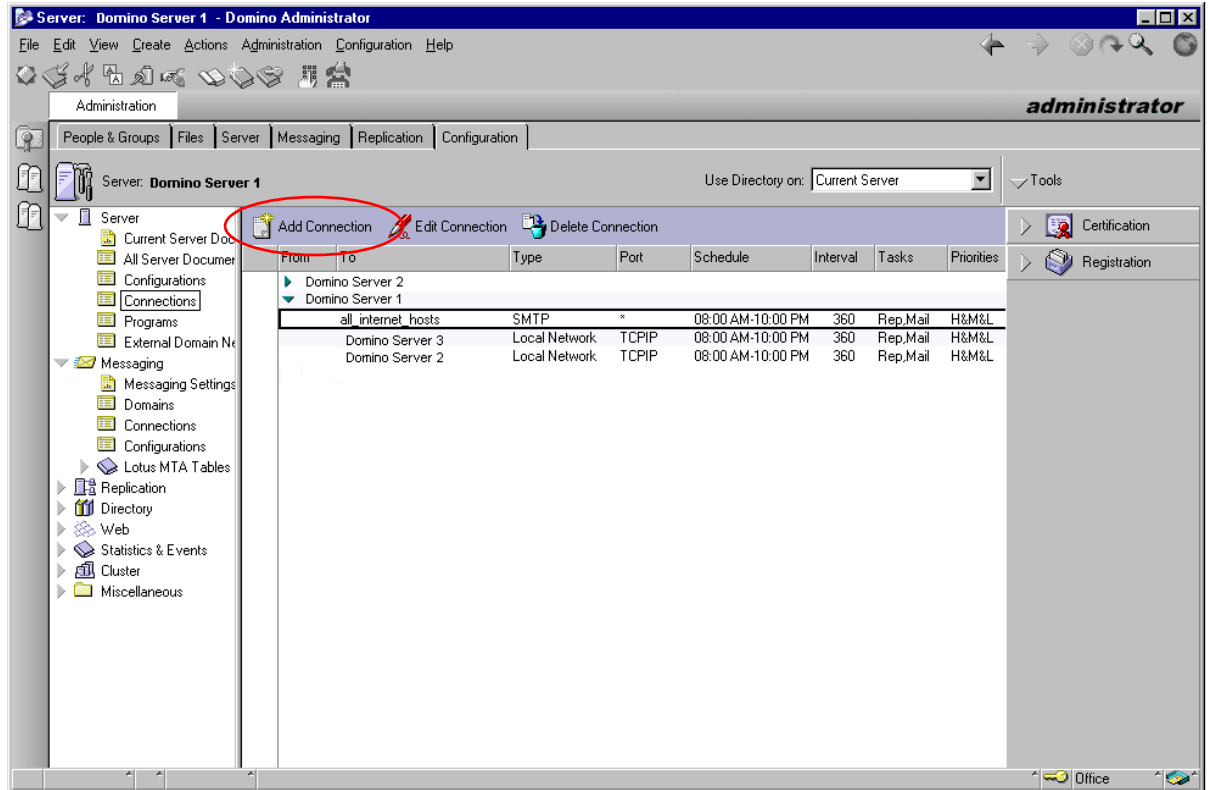


Figure 4: Domino Server 1 - creating a connections document

Domino Server 1 - Disabling SMTP within the Local Domain

Figure 5 depicts the Messaging Settings for Domino Server 1. Routing is via Lotus Notes. The setup does not allow email in SMTP format within the local domain or when sent to external domains. This forces mail routing to use the Notes protocol.

Optional: You may wish to define inbound restrictions so only the multifunction device can route mail through Port 25. To do so, access Restrictions and Controls and enter the IP address (or addresses) of the multifunction device products allowed to route through this server.

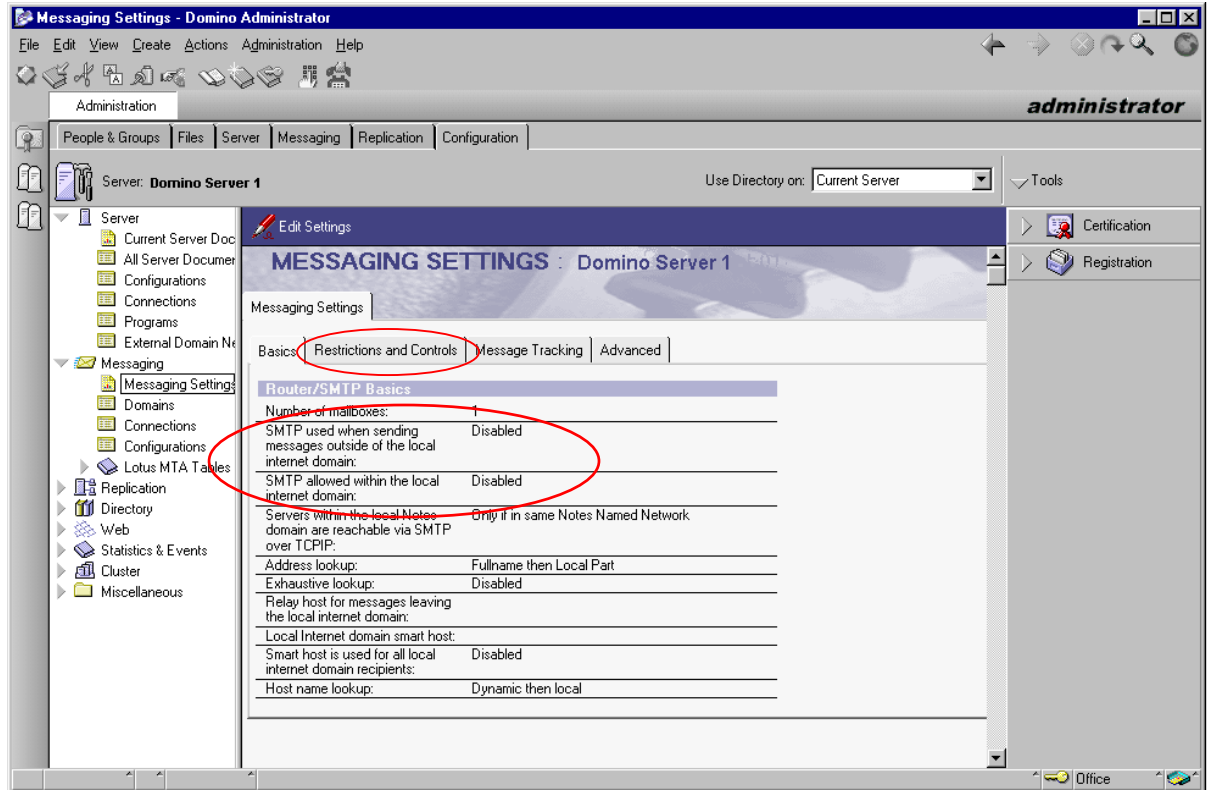


Figure 5: Domino Server 1 - disabling SMTP

Domino Server 2 - Disabling SMTP

Disable the SMTP listener task on Domino Server 2's Port 25, so this server cannot receive SMTP mail. Enable Mail Routing so this server can direct email to other Domino Servers via Lotus Notes.

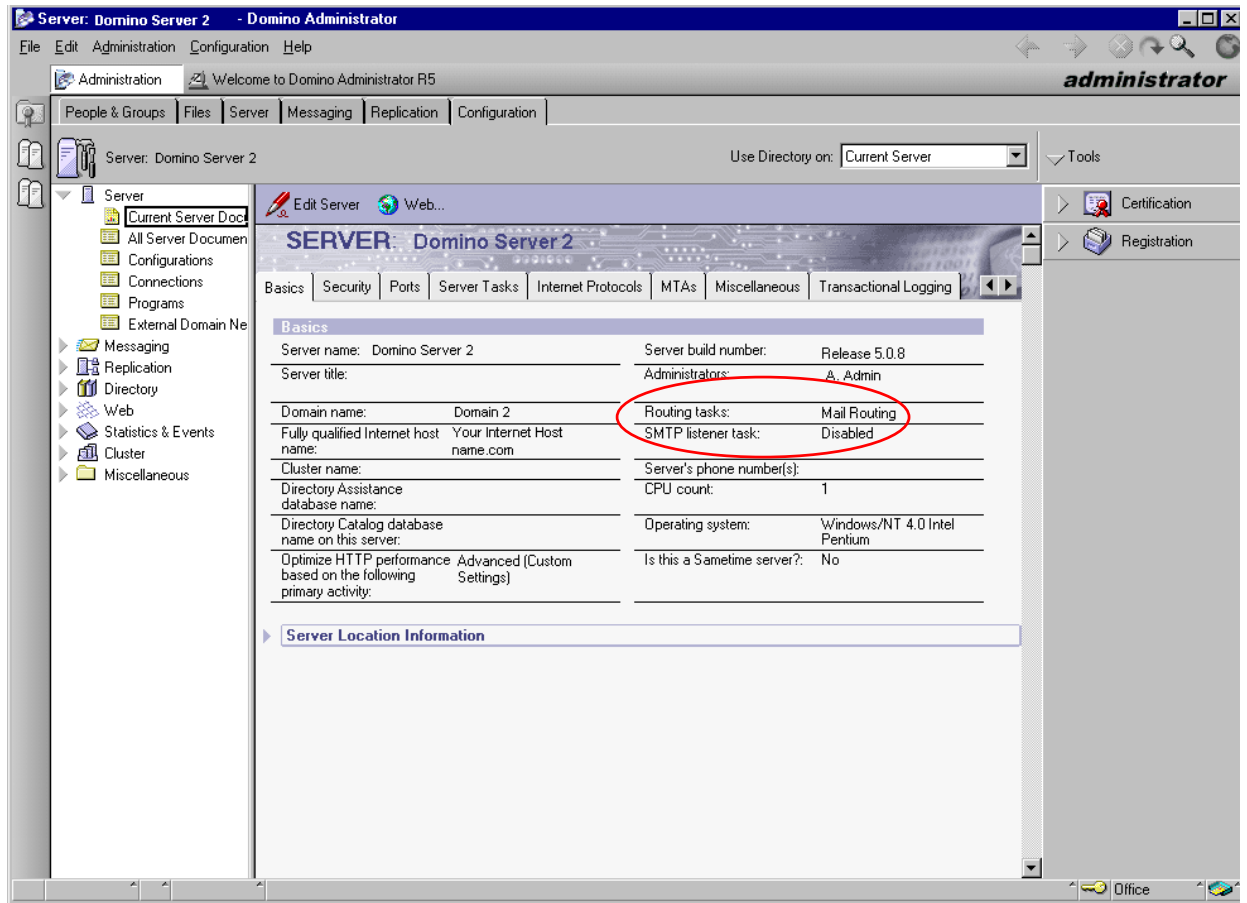


Figure 6: Domino Server 2 disabling SMTP listener task

Domino Server 2 - Foreign SMTP Domain Configuration

Domino Server 2 points to the Domino Server 1 domain (Domain 1). Domino Server 1 points to Domino Server 3 in Domain 3. This allows Domino Server 2 to send email intended for the Internet.

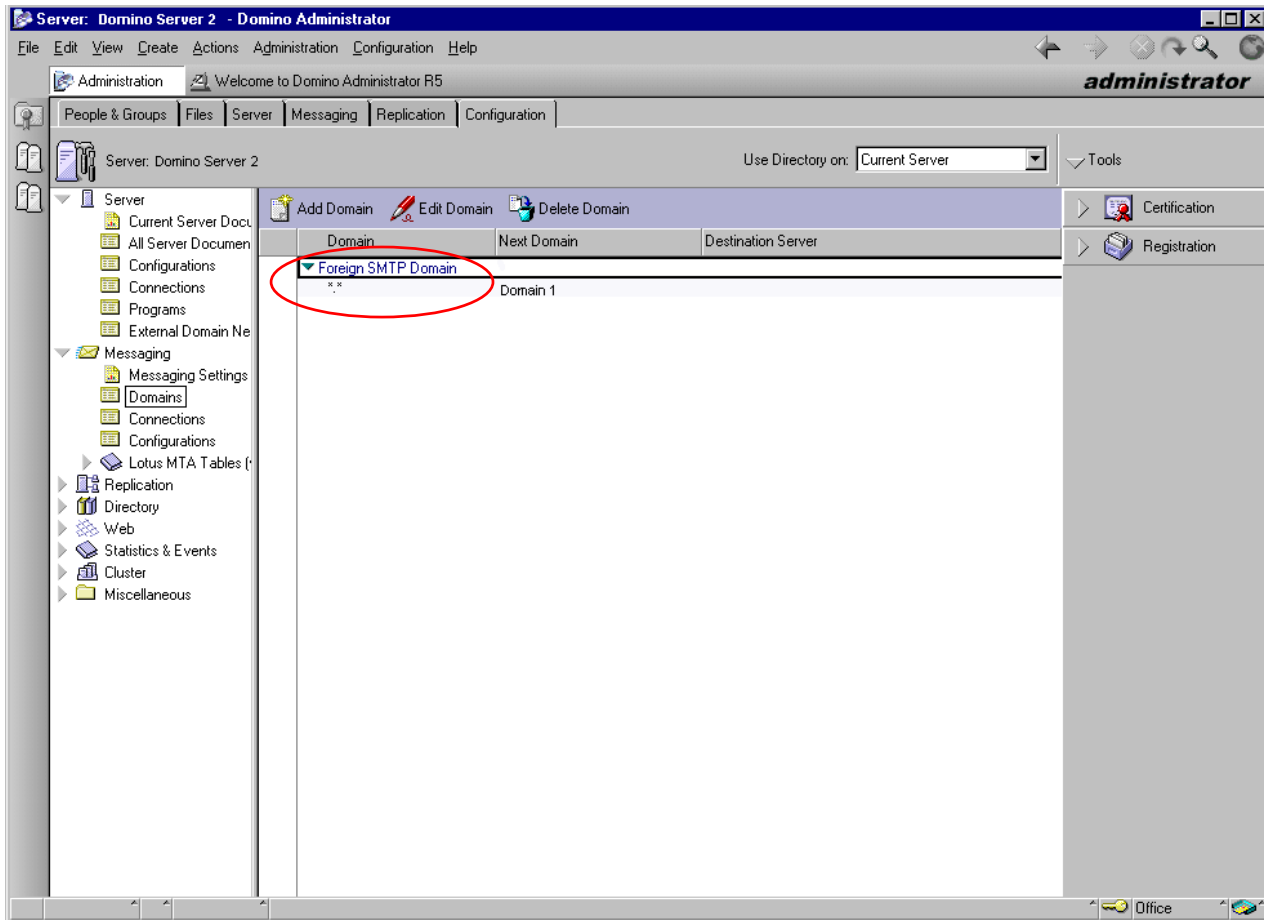


Figure 7: Domino Server 2 - Foreign SMTP Domain Configuration

Domino Server 2 - Creating a Connection Document

The Connection Document allows the servers to communicate and provide a route for SMTP outbound email. No connection exists between Domino Server 2 and Domino Server 3. The foreign SMTP domain routes mail from Domino Server 2 to Domino Server 1 and then to Domino Server 3.

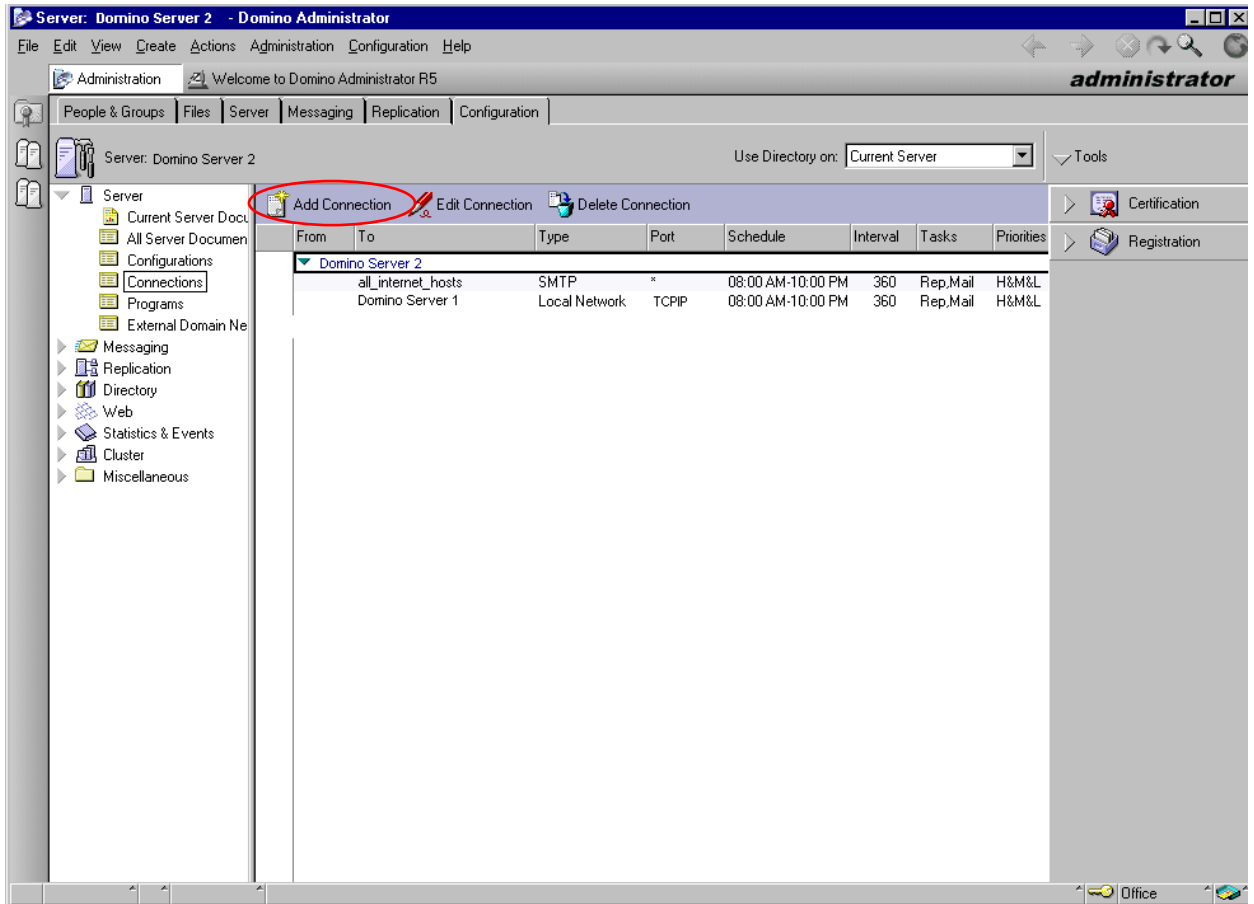


Figure 8: Domino Server 2 - creating a connections document

Domino Server 3 - Creating the Domino Gateway

Domino Server 3 is configured as a gateway to the Internet. The Server Document:

- Enables listening on Port 25 for SMTP email originating from the multifunction device via the Internet.
- Routes Lotus Notes and SMTP email.

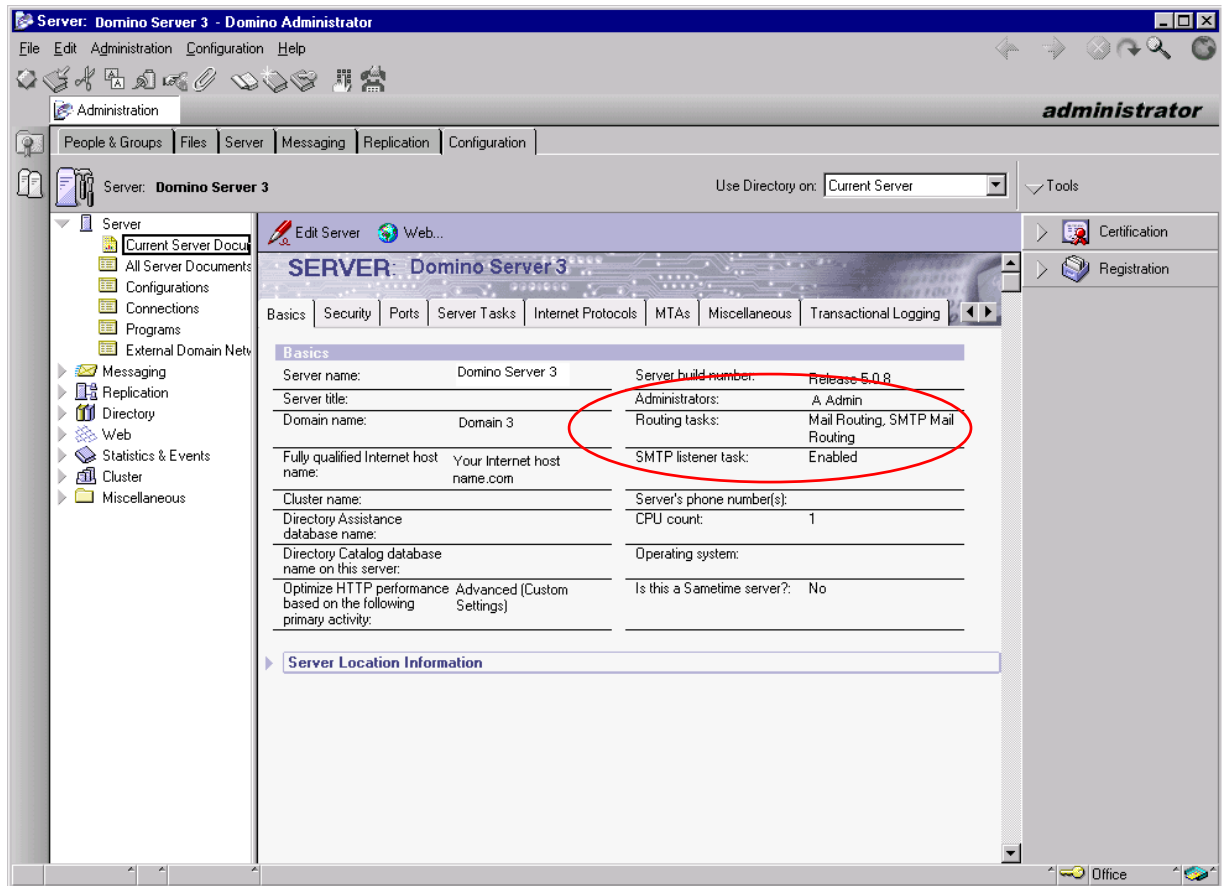


Figure 9: Domino Server 3 - creating the gateway

Domino Server 3 - Enabling SMTP

Domino Server 3 is configured to route SMTP mail to the Internet. Enable SMTP to send messages outside the local Internet. Additionally, define a relay host (external SMTP server) for messages leaving the local Internet domain, generally a SMTP server outside the firewall.

Optional: If desired, configure Restrictions and Controls to prevent outbound messages from the multifunction device to the Internet. This provides security when scanning and transmitting sensitive documents outside the firewall.

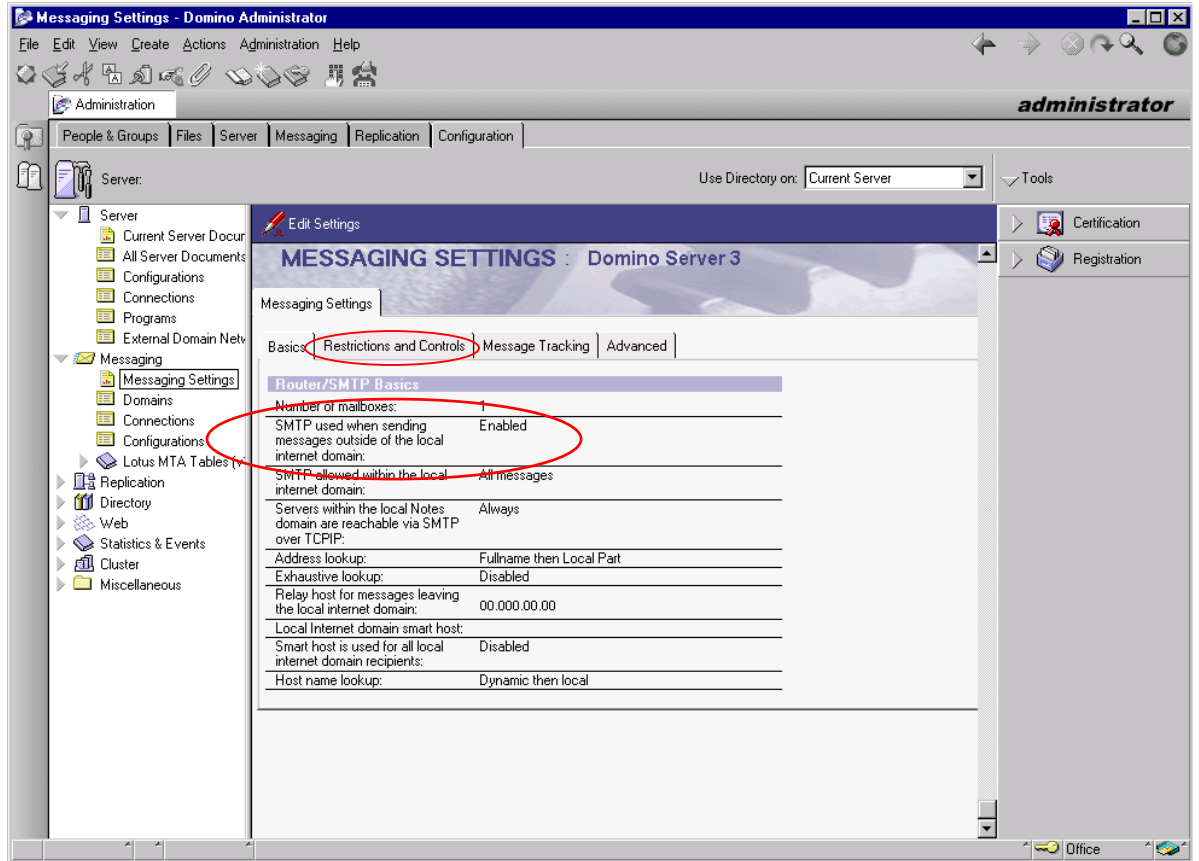


Figure 10: Domino Server 3 - enabling SMTP

Anti-SPAM, Routing and Relaying

SMTP system administrators often configure filters, routing, and relay settings to enforce email policies. For example, a relay setting might prevent outbound SMTP mail altogether, or restrict the users that have the ability to send email. The configuration of the SMTP server may prevent the multifunction device from sending email outside the corporate network, or even internally.

To prevent spam on Domino Server 1, set Restrictions and Controls options that only allow the multifunction device to receive inbound SMTP mail (see Figure 1). For complete configuration support, consult the documentation for your SMTP server or SMTP services.

Additional Information

Xerox Customer Service welcomes feedback on all documentation - send feedback via e-mail to: USA.DSSC.Doc.Feedback@mc.usa.xerox.com.

You can reach Xerox Customer Support at 1-800-821-2797 (USA), TTY 1-800-855-2880 or at <http://www.xerox.com>.

Other Tips about Xerox multifunction devices are available at the following URL: <http://www.xerox.com/DocumentCentreFamily/Tips>.

XEROX®, The Document Company®, the digital X®, and all Xerox product names are trademarks of XEROX CORPORATION. Other trademarks belong to their respective owners.

Copyright © XEROX CORPORATION 2003. All Rights Reserved.

