

# DC Tips

... for the user

dc01cc0254  
March 24, 2003

## *Installing and Using the Xerox TCP/IP Port Monitor*

### Purpose

This document demonstrates how to install, setup and use the Xerox TCP/IP port monitor. The Xerox TCP/IP port monitor runs in Windows NT 4.0, 2000 and XP environments. It allows the Windows print spooler to send documents to Xerox printers using LPR and Port 9100 protocols. For drivers with the capability, it enables bi-directional communication between the driver and the printer. Bi-directional communication allows you to access features such as tray configurations and enables the printer to send information such as empty paper trays status or error messages. A TCP/IP Port Monitor for Windows 98, released with CentreWare 5.4, is discussed later in this document.

### Installation

#### First time installation

Copy the files to the system directory from the CentreWare CD or from [www.xerox.com](http://www.xerox.com) and double click the setup.exe. Follow the on-screen instructions to install the port monitor. At the end of this process, a completion message appears. To add or remove ports at this time, select **Start > Settings > Printers**, access the printer Properties and select the Ports tab.

#### Upgrading

If you already have a TCP/IP port monitor installed and you wish to upgrade the software, the installation process first stops the print spooler so that it can copy the updated files to the system directory. This is necessary because the monitor runs as an extension to the print spooler. The operating system does not allow file removal while the spooler is executing. Before the installer stops the spooler, it displays a message with the choice to continue or cancel the upgrade. During the upgrade process, the progress window shows the status of spooler shutdown and startup. At the end of the upgrade, a completion message appears.

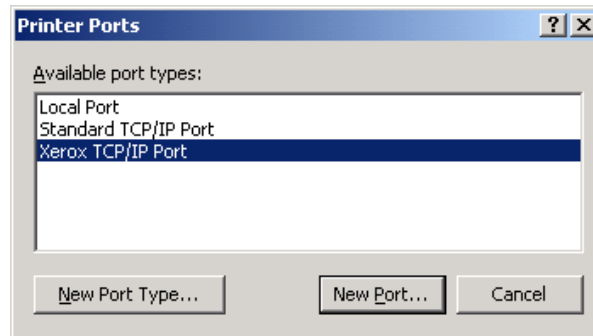
#### Adding a Xerox TCP/IP Port

1. To add a TCP/IP port, open the printers folder and select the properties of the printer to which you would like to attach the new TCP/IP port. Select the Ports tab and click **Add Port**.

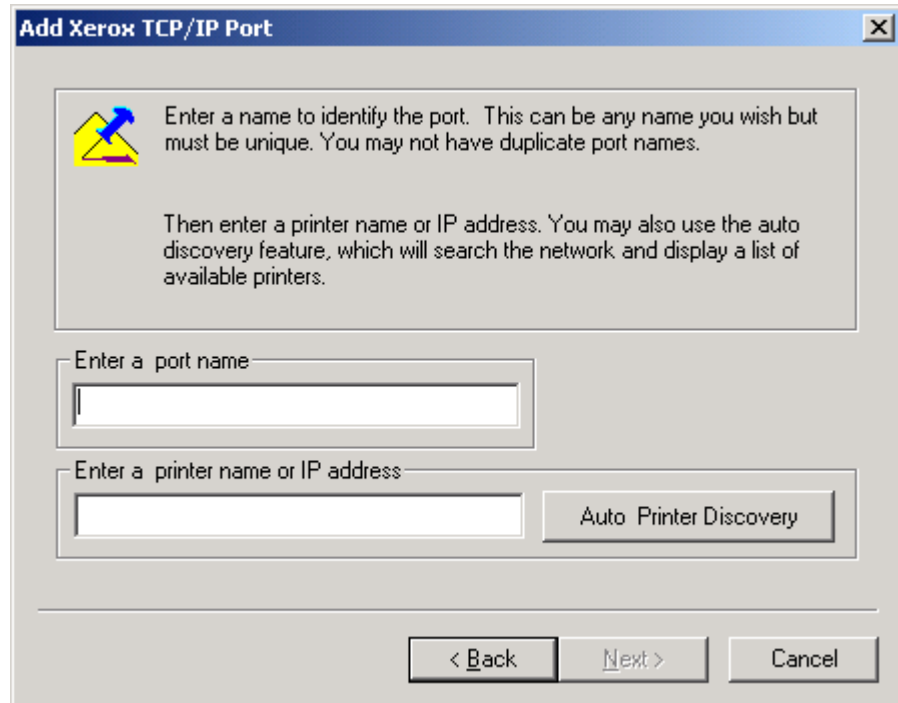
This document applies to these **Xerox** products:

x	DC 555/545/535 ST
x	DC 490/480/470/460 ST
x	DC 440/432/425/420 ST
	DC 340/332 ST
	DC 265/255/240 ST/LP
	DC 230/220 ST/LP
	DCCS 50

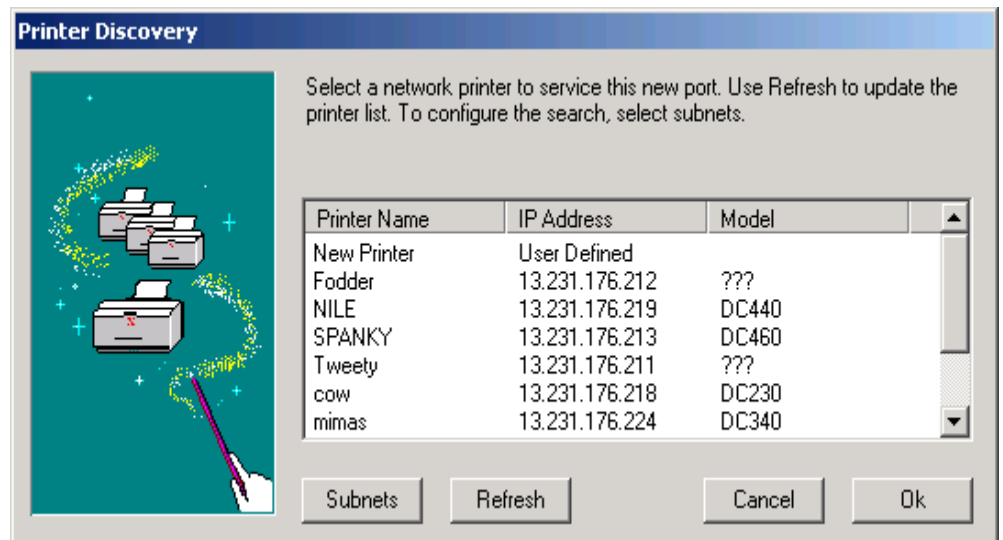
- From the list of available printer port monitors, select **Xerox TCP/IP Port**. Then click **New Port**.



- Click **Next** to continue, then enter a port name and IP address (or printer name).



If you are unsure about the IP address of the printer, use the Auto Printer Discovery option. The Auto Discovery feature searches the network for available printers, and allows you to select from the list of printers found on the network.



After you select the printer using the Auto Printer Discovery, click **OK** to return to the previous screen. The IP Address and Printer Name fields are now populated.

4. To add the printer to the new Xerox TCP/IP port and complete the process, click **Next.**, then **Finish.**

## Configuring the Xerox TCP/IP Port Monitor

Configure the new Xerox port you added to use LPR or Port 9100/Raw protocol. To enter these settings:

1. Access the Properties of the printer.
2. Click on the Ports tab, then click **Configure Port** to access the Configuration dialog box.

The screenshot shows the 'Xerox TCP/IP Port - Configuration' dialog box. The 'Port Settings' section includes a 'Port Name' field with 'Xerox' and a 'Printer Name or IP Address' field with '13.231.176.223'. Below these is an 'Auto Printer Discovery' button. The 'Protocol' section has two radio buttons: 'Raw' and 'Lpr', with 'Lpr' selected. The 'Raw Settings' section has a 'Raw Port Number' field with '9100'. The 'Lpr Settings' section has an 'Lpr Queue Name' field with 'lp' and a checked checkbox for 'Lpr byte counting enabled'. The 'Bi-directional Settings' section has a checked checkbox for 'Bi-directional communication enabled', two fields for update intervals ('Update configuration every 30 seconds' and 'Update status every 10 seconds'), and an 'SNMP Community Name' field with 'public'. A printer icon is located to the right of the 'Bi-directional Settings' section. At the bottom of the dialog are 'About', 'OK', and 'Cancel' buttons.

## Windows 9x

The CentreWare 5.4 Port Monitor Utility, released with the DC 535/545/555 series, allows you to create a port for Windows 9x systems. Previously, the CentreWare 5.3 Port Monitor Utility only worked with Windows NT 4.0, 2000 and XP operating systems. This new version allows older 9x operating systems to use lpr to print. The Port Monitor Utility installation process for Windows 9x is the same as the installation for Windows NT, 2000 and XP.

## Using Other Printers with the Utility

After installing the TCP/IP Port Monitor, you can connect printers other than a Document Centre to the new ports. Not all printers support bi-directional communication but they should operate normally using the new ports. This is useful for systems in which LPR is not available or installed.

## Additional Information

Xerox's Document Centre Technical Support Operations welcomes feedback on all DC Tips documentation - send feedback via e-mail to:

[USA.DSSC.Doc.Feedback@mc.usa.xerox.com](mailto:USA.DSSC.Doc.Feedback@mc.usa.xerox.com)

[<mailto:USA.DSSC.Doc.Feedback@mc.usa.xerox.com>](mailto:USA.DSSC.Doc.Feedback@mc.usa.xerox.com).

Other DC Tips are available at the following URL:

[<http://www.xerox.com/DocumentCentreFamily/Tips>](http://www.xerox.com/DocumentCentreFamily/Tips).

XEROX®, The Document Company®, the digital X®, and all Xerox product names are trademarks of XEROX CORPORATION. Other trademarks belong to their respective owners.

Copyright © XEROX CORPORATION 2003. All Rights Reserved.

THE DOCUMENT COMPANY  
**XEROX**®