

Customer Tips

dc01cc0224
August 29, 2003

... for the user

Preventing the PS Separator Page from Stapling to a Print Job

Purpose

This document provides a procedure to prevent the PostScript separator page from stapling to a print job. The stapling error occurs in drivers with version numbers that precede those listed in the "Updated Drivers" section later in this document. For more information about creating separator pages, refer to:

<http://support.microsoft.com/support/kb/articles/Q102/7/12.asp>

Background

The separator page is a function of the operating system. The operating system inserts a PostScript (PS) or Printer Control Language (PCL) page into the job stream before the driver generates PDL code. When the PDL code is generated, the separator page is integrated into the print job and then stapled to the remainder of the job. This is expected behavior and the Xerox driver is working as intended.

Assumption

Your print driver is installed and configured for Finishing options.

Separator Page Definition

A separator or banner page typically identifies who sent the document to the printer and gives the date and time of printing. You can use one of the standard separator pages or create a custom page. Windows NT/2000 provides the three separator page files located in the folder: `c:\winnt\System32`.

This document applies to these Xerox products:

x	WC Pro 32/40 Color
x	WC Pro 65/75/90
x	WC Pro 35/45/55
x	WC M35/M45/M55
x	DC 555/545/535
x	DC 490/480/470/460
x	DC 440/432/425/420
x	DC 340/332
x	DC 265/255/240
x	DC 230/220
x	DCCS 50

Separator Page Used in this Document

For this document, we used a separator page that Microsoft supplies in the Windows system directory: sysprint.sep.

Sysprint.sep is a PostScript file that switches the printer to PostScript printing and prints a separator page before each document. Sysprint.sep is compatible with PostScript printers.

You can edit or customize any separator page. Re-name your customized file to preserve the original *.sep files.

Selecting a Separator Page

1. Open **Printers**.
2. Right-click the printer you are using, and select **Properties**.
3. Perform one of the following (see Figure 1):
 - Windows 2000: On the **Advanced** tab, click **Separator Page**.
 - Windows NT: On the **General** tab, click **Separator Page** and browse for the *.sep file.

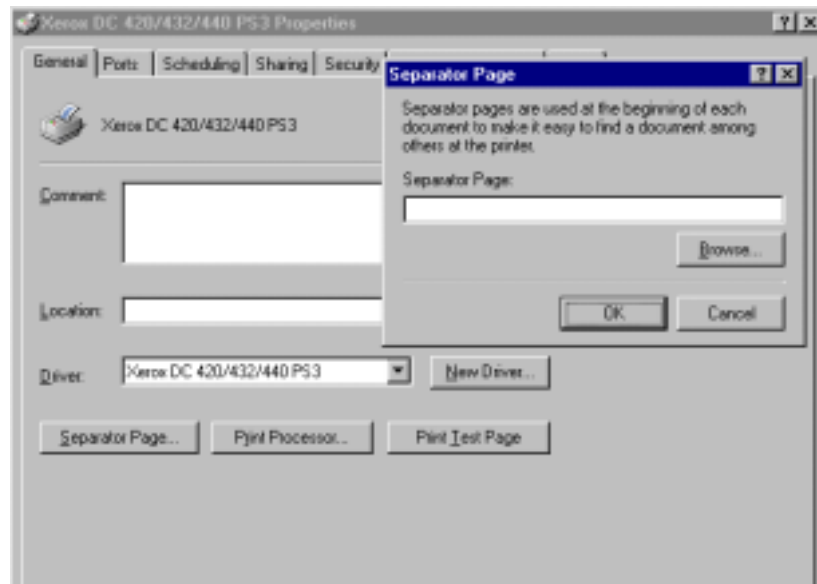


Figure 1: Selecting a Separator Page for Windows NT

4. Click **Browse** and find the folder: c:\winnt\System32
5. Select **sysprint.sep** or one of your own custom separator pages.

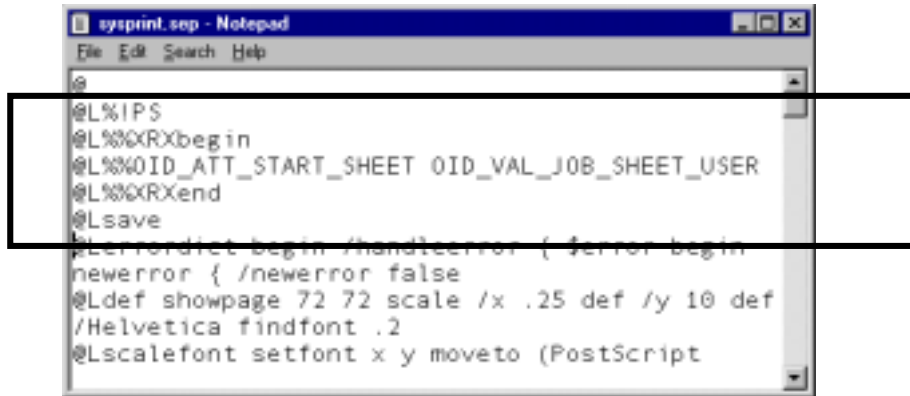
Modifying the *.sep File

You can include additional code in the .sep file to inform the Xerox multifunction device to treat the separator page as a distinct part of a print job. See the example shown in Figure 2. When you edit the sysprint.sep file, remember the following points:

- The @ symbol is used as a control character in the following example. Your custom separator page may use a different control character. Replace the @ with your own control character when you type the code.
- The text after the @ sign must be exactly as shown below.

Notes:

- We do not have a fix for PCL separator files.
- The Microsoft separator pages are stored in the C:\WINNT\SYSTEM32 directory.



```

sysprint.sep - Notepad
File Edit Search Help
@
@L%IPS
@L%%RXbegin
@L%%OID_ATT_START_SHEET OID_VAL_JOB_SHEET_USER
@L%%RXend
@Lsave
@Lerrordict begin /handleerror { $error begin
newerror { /newerror false
@Ldef showpage 72 72 scale /x .25 def /y 10 def
/Helvetica findfont .2
@Lscalefont setfont x y moveto (PostScript

```

Figure 2: Example of the Customized Separator File

Updated Drivers

Xerox has fixed the stapling issue in PostScript NT/2000 drivers. The fix in the following drivers is tested and approved.

CentreWare 5.3

DC 460/470/480/490 ST	PostScript Standard	1.3.11.0
	PostScript Enhanced	2.04.09
DC 420/432/440 ST	PostScript Standard	1.3.11.0
	PostScript Enhanced	2.04.08
DC 332/340 ST	PostScript Standard	1.3.11.0
	PostScript Enhanced	2.03.20
DC 240/255/265 ST/LP	PostScript Standard	1.3.11.0
	PostScript Enhanced	2.05.05
DC 220/230 ST/LP	PostScript Standard	1.3.11.0
	PostScript Enhanced	2.03.20
DCCS 50	PostScript Standard	3.2.0

Centerware 5.4

DC 535/545/555	PostScript Standard	3.52.0.0
	PostScript Enhanced	1.00.15

Centerware 5.5

WC Pro 32/40 Color	PostScript Standard	4.57.1.0
WC Pro 35/45/55	PostScript Standard	4.58.12.0
WC Pro 65/75/90	PostScript Standard	4.58.7.0

Additional Information

Xerox Customer Service welcomes feedback on all documentation - send feedback via e-mail to: USA.DSSC.Doc.Feedback@mc.usa.xerox.com.

You can reach Xerox Customer Support at 1-800-821-2797 (USA), TTY 1-800-855-2880 or at <http://www.xerox.com>.

Other Tips about Xerox multifunction devices are available at the following URL: <http://www.xerox.com/DocumentCentreFamily/Tips>.

XEROX®, The Document Company®, the digital X®, and all Xerox product names are trademarks of XEROX CORPORATION. Other trademarks belong to their respective owners.

Copyright © XEROX CORPORATION 2003. All Rights Reserved.

