

# Customer Tips

dc00cc0211  
August 29, 2003

*... for the user*

## *Windows Environment Installation of an Adobe PS Driver Using a Multifunction Device PPD*

### Purpose

This document provides instructions for installing the Adobe PostScript (PS) base driver with a Xerox multifunction device Postscript Printer Description (PPD) file.

### The Adobe Driver

The Adobe base PS driver is available as an open platform for printer manufacturers to adapt and configure to their printer specifications. The PS driver is adapted by creating a PPD file. The PPD file contains the information to convert the Adobe driver into one for a specific printer. The Adobe driver comes with a generic PPD that works with any PostScript compatible printer but may not enable all its features and functions. You can download an executable that installs and configures the Adobe base driver from the Adobe Web site at: <http://www.adobe.com/support/downloads>

### Multifunction Device PPD

For full support of your multifunction device's features, you must obtain the correct multifunction device PPD in addition to the latest Adobe PS driver. A current PS driver including the PPD for your multifunction device is available at: <http://www.xerox.com>

1. Access the Web site and download the compressed PS driver package for the appropriate multifunction device and operating system.
2. Uncompress (unzip) the files in the driver package to a temporary directory (usually c:\temp). The PPD (.ppd) for the driver you selected is among the files.

### Installing the Adobe Driver with a Xerox PPD

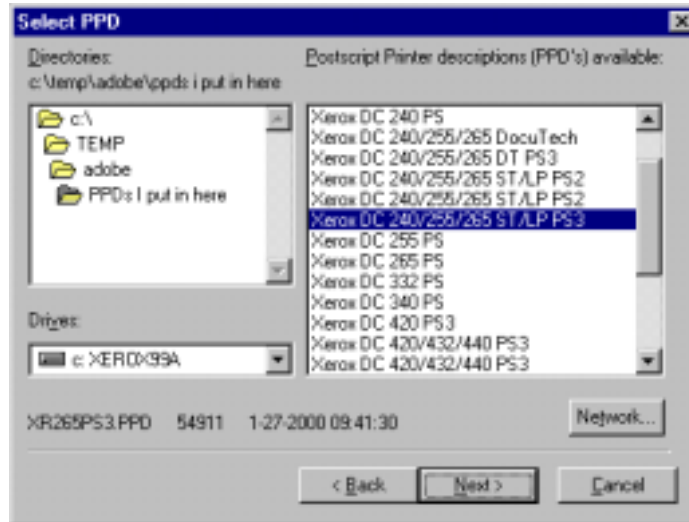
To install the Adobe driver with a Xerox PPD, follow the steps below:

1. Make sure the PPD you acquired is in an accessible directory.
2. Run the Adobe executable (for Adobe 1.0.6 the executable is **winsteng.exe**).
3. The executable unzips its files into the C:\temp\adobe directory and begins the install process.
4. Accept all defaults unless your configuration requires otherwise.

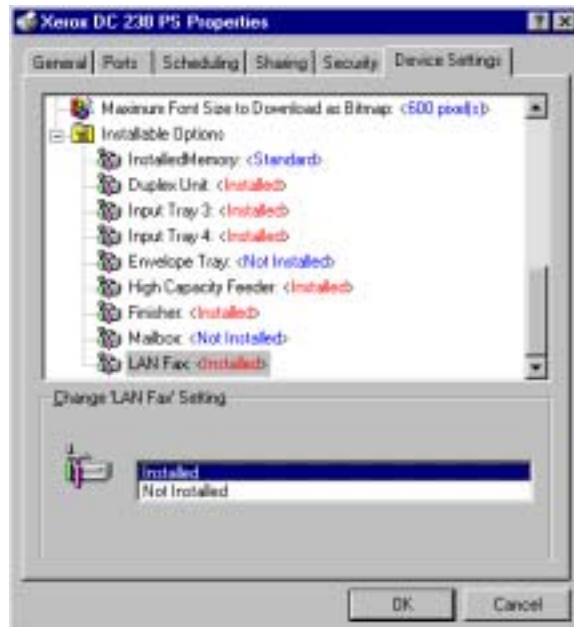
**This document  
applies to these  
Xerox products:**

x	WC Pro 32/40 Color
x	WC Pro 65/75/90
x	WC Pro 35/45/55
x	WC M35/M45/M55
x	DC 555/545/535
x	DC 490/480/470/460
x	DC 440/432/425/420
x	DC 340/332
x	DC 265/255/240
x	DC 230/220
	DCCS 50

5. In the Select PPD screen, select the folder where you placed the multifunction device PPD.



6. Select the PPD and continue with the driver installation.
7. Restart your PC when prompted at the end of the install.
8. When the restart is complete, select [**Start:Settings:Printers**] to access the Printers folder. Right-click on the newly installed printer and select [**Properties**] to customize your printer configuration.



## Additional Information

Xerox Customer Service welcomes feedback on all documentation - send feedback via e-mail to: [USA.DSSC.Doc.Feedback@mc.usa.xerox.com](mailto:USA.DSSC.Doc.Feedback@mc.usa.xerox.com).

You can reach Xerox Customer Support at 1-800-821-2797 (USA), TTY 1-800-855-2880 or at <http://www.xerox.com>. Other Tips about Xerox multifunction devices are available at the following URL: <http://www.xerox.com/DocumentCentreFamily/Tips>.

XEROX®, The Document Company®, the digital X®, and all Xerox product names are trademarks of XEROX CORPORATION. Other trademarks belong to their respective owners. Copyright © XEROX CORPORATION 2003. All Rights Reserved.

