

DC Tips

... for the user

DC00CC0111
July 7, 2000

.mts File Issues when Upgrading CentreWare from 3.2 to 5.2

Purpose

This document provides a procedure for Windows 95 client users to follow when upgrading CentreWare from 3.2 to 5.2. A misleading message appears asking permission to re-associate the .mts file with a CentreWare utility. This document explains the message and how to handle the situation. If you do not proceed with the association, we discuss other available options for you to use.

We strongly suggest using the option to enable the association of the “.mts” file with the CentreWare utility (see the CentreWare 5.2 Installation section on page 2). This option results in the correct installation of the CentreWare software. If you choose another option, recovery is required. We offer two different recovery options; select the method you prefer. Both recovery procedures are adequate.

.mts File Definition

A file with the .mts extension is the output of the Device Discovery Wizard cache. These ASCII format files contain Xerox Document Centre information that may or may not reside on your local desktop. The file provides a convenient way to create, distribute, and maintain Document Centre network information.

The .mts file can be shared with other users by using the Device Discovery Import Tool. This utility enables the automatic installation/update of Document Centre information. For example, an administrator can write the Document Centre information to an .mts file and then distribute the file to other users. After the administrator exports the file, recipients can double-click the file to automatically update their local Document Centre information.

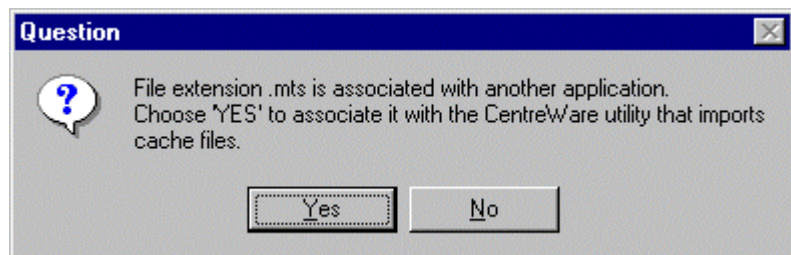
If you choose not to associate the .mts file during the CentreWare installation, you must manually retrieve the required files. This can be time consuming and may require System Administrator assistance.

**This document
pertains to these
Xerox products:**

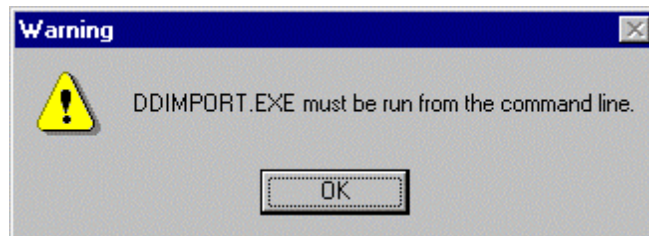
x	DC 460/470 ST
x	DC 420/432/440 ST
x	DC 332/340 ST
x	DC 240/255/265 ST/LP
x	DC 220/230 ST/LP
	DCCS 50

CentreWare 5.2 Installation

1. Insert the CentreWare 5.2 CD.
2. Select **[Network Admin Services]**.
3. If for some reason, CentreWare does not automatically launch, browse through the CD and select **[Setup.exe]**. then select **[Network Admin Services]**.
4. Select **[Install Network Admin Services]**. Within a few seconds a Question Message Box appears with a message "Choose yes to uninstall previous client now".
5. Select **[Yes]**. Within a few seconds a Welcome Message Box appears, followed by a software license agreement.
6. Select **[Yes]** to accept the license agreement.
7. Select **[Next]** for Registration. The Choose Destination Location and the Select Program Folder pop up windows appear. The Start Copying Files pop up window eventually appears and the file transfer begins. After a few seconds, the following "Question" pop up appears:
8. The message window is misleading. At this point of the installation, the .mts file is not associated with any application. Select **[Yes]**; the correct association is created. The Setup Complete pop up window appears, providing the option to immediately restart the computer or restart later.



If you select **[No]**, the following pop up message appears, and then recovery is required.



Recovery Option 1

The following paragraph instructs you how to manually import an .mts file. Search for the files using “Windows Explorer” or the “Find Files or Folders” search application. Normally the .mts file that was created during the CentreWare 3.2 installation is automatically saved in “C:\Windows\System” if the file(s) was created locally. The ddimport.exe file (which is used in conjunction with the .mts file) is automatically saved in C:\Program Files\Xerox\CentreWare5x. Include both files on the command line. Manually type the executable file (ddimport.exe) and the full path to where the .mts file is located.

Example: If the file “Myfile.mts” file was located on the “C:\Windows\System” directory and the “ddimport.exe” file located in “C:\Program Files\Xerox\CentreWare5x”. The user would launch “MS Dos” window. Change Directory to C:\ then type on the command line:

```
C:\progra~1\xerox\centre~1\ddimport c:\windows\system\myfile.mts
```

After the successful execution of this command, the following pop up Device Discovery Import Tool message appears:



Recovery Option 2

The .mts file can be associated with the import program by performing the following steps:

1. Select **[My Computer]** to launch the My Computer window.
2. Select **[View]**, on the tool bar.
3. Select **[Folder]**, which launches the Folder Options pop up window.
4. Select the **[File Types]** tab.
5. Select **[New Type]** at the upper right corner. The Add New Type pop up window appears.
6. Type the word `mts` in the Associate Extension window.
7. Select **[New]** at the lower left corner of the window. The New Action window appears.
8. In the New Action window, type the word `associate`.
9. Select **[Browse]** which launches the Browse window. Then browse to the location of the ddimport.exe file. (The default path for this file is: “**C:\Program Files\Xerox\CentreWare5x**” unless saved to another location.)
10. Select **[ddimport.exe]**.
11. Select **[Open]** on the lower right of the window. This action deploys the path in the Application used to perform Action window.
12. Select **<OK>**. The Device Discovery Import Tool pop up message launches, which indicates a successful installation.

Additional Information

The Xerox Digital Solutions & Support Centre welcomes feedback on all DC Tips documentation - send feedback via e-mail to:

USA.DSSC.Doc.Feedback@mc.usa.xerox.com.

Other DC Tips are available at the following URL:

<http://www.xerox.com/DocumentCentreFamily/Tips>.

XEROX®, The Document Company®, the digital X®, and all Xerox product names are trademarks of XEROX CORPORATION. Other trademarks belong to their respective owners.

Copyright © XEROX CORPORATION 2000. All Rights Reserved.

THE DOCUMENT COMPANY

XEROX