

**XEROX**<sup>®</sup>

CopyCentre<sup>®</sup>  
C55

WorkCentre<sup>®</sup>  
Pro 55

Technology | Document Management | Consulting Services

print | copy | scan | fax | email

The **features** you need,  
a price that will **amaze** you.



# The shape of things to come.

Introducing the Xerox CopyCentre® C55 Digital Copier and Xerox WorkCentre® Pro 55 Copier-Printer-Scanner. Two remarkable products designed to give you the essential features you need—for less than you'd expect to pay. And since they're modular and fully upgradeable, you can easily add capabilities as your needs grow.



## Xerox CopyCentre® C55 Digital Copiers

**Smart. Reliable. Simple to use.**

True to its lineage, the CopyCentre combines the essential copying features and functions you need with the professional-quality output you've come to expect from Xerox—the first name in copiers.

When it comes to rock-solid performance, the CopyCentre family is in a class of its own. Built for endurance, it delivers day-in, day-out reliability. And its image quality? Truly world-class. The CopyCentre family's patented AutoIQ can instantly monitor and adjust settings for optimum output.

Plus, it's designed to be extremely simple to maintain. In fact, automatic monitoring features can actually help prevent problems *before* they occur. All of which guarantees you will be busily churning out great work—more quickly and reliably than ever before.



*CopyCentre C55 with Offsetting Catch Tray option.*

Think of it as your office's newest “go-to” performer.

**55 pages per minute**—with an amazing space-saving footprint. Proof positive that world-class performance *can* come in small packages.

**Maximize productivity and uptime** with timesaving Customer Replaceable Units. Simple and quick to replace, they'll make sure you avoid downtime and stay up and running.

**Effortlessly handle a wide array of media**—from light papers to heavyweight stock—from any tray.

**Enjoy flexible finishing** with automatic collation, single or dual stapling, and hole punching.

## Xerox WorkCentre® Pro 55 Copier-Printer-Scanner

Total performance that helps your office work smarter.

Looking for a multifunction device that has the essential features your office needs? Welcome to the Xerox WorkCentre Pro 55. It's the ideal choice for workgroups that want effortless copying, printing and scanning in a single device with none of the hassle.

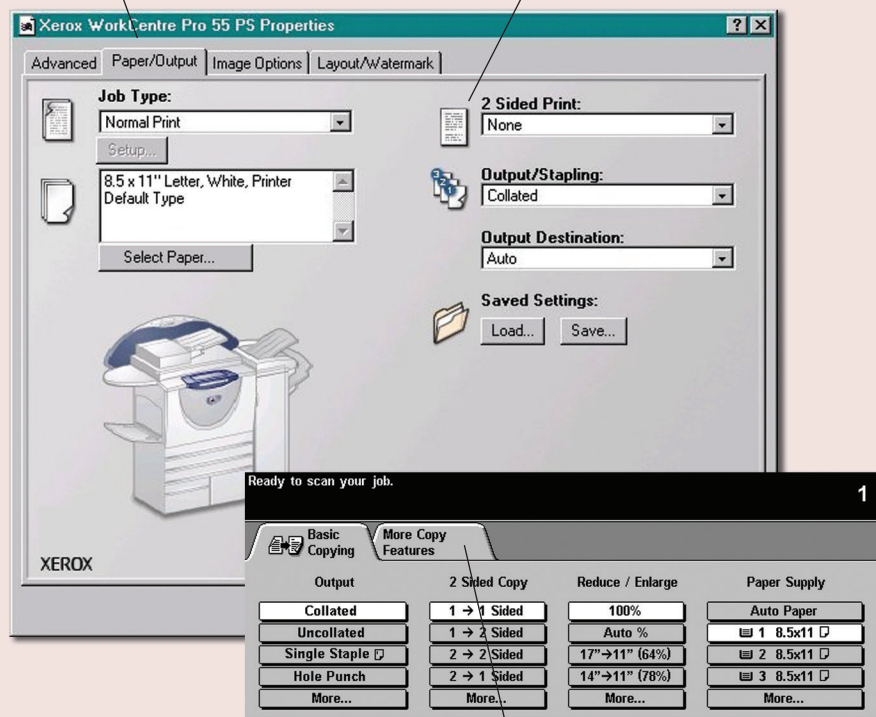
No question, standout productivity and value is where the WorkCentre Pro 55 truly shines. With the same walk-

up capabilities as the CopyCentre product, it also provides network printing, optional faxing, network scanning and scan to email in an integrated, easy-to-use package. And since it's networked, it's like having a "virtual copier" right at your desktop. Print multiple collated and finished sets at the click of a mouse.

And the price? Some would say it's the best feature.

*CentreWare® print drivers have clear graphical user interfaces that make it easy to select all printer features.*

*Icons clearly depict which features have been selected, taking the guesswork out of job programming.*



*An easy-to-use touchscreen control panel provides convenient access to all of the WorkCentre Pro advanced capabilities.*



*WorkCentre Pro 55 with optional Office Finisher.*

## Exceptional capabilities. Amazing value.

**Track your print job's progress** and view the WorkCentre Pro device's status conveniently from your desktop.

**View and control print jobs** at the touch-screen interface. No need to walk back to your desk.

**Powerful scanning.** You can instantly scan to your desktop, network file server, document management application or even the Web. What's more, it's easy to integrate this capability into your business workflow using existing partner solutions.

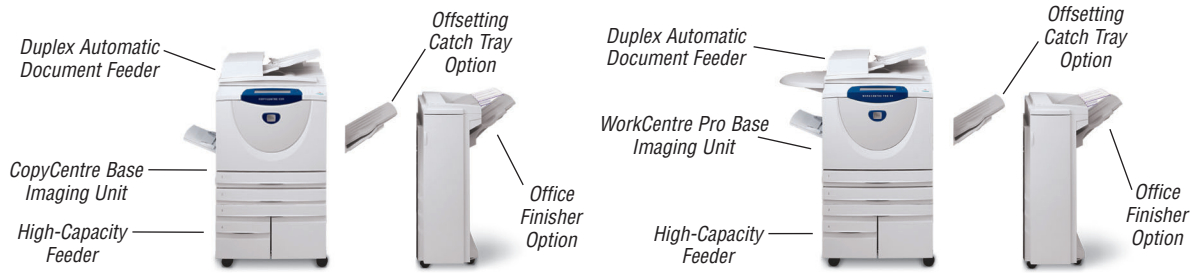
**Scan hard-copy originals directly to email.** Instantly send documents across your network or the Internet—all without the need of a PC.

**Safeguard your electronic data** with the exclusive Image Overwrite Security option. It clears all images from the system's hard drives, ensuring that your private data stays that way. WorkCentre Pro models also provide restricted access to network configuration settings.

The WorkCentre Pro 55 has received the Common Criteria Certification administered by NIAP (National Information Assurance Partnership), meeting international IT security standards.



**Call today.** For more information or detailed product specifications, call **1-800-ASK-XEROX** or visit us at **www.xerox.com/office**.



Configurations	CopyCentre® C55	WorkCentre® Pro 55
<b>Speed</b>	55 pages per minute (ppm)	
<b>Duty Cycle</b>	Up to 200,000 pages / month	
<b>Device Memory</b>	128 MB EPC RAM Standard / 512 MB EPC RAM Maximum	256 MB EPC RAM Standard / 512 MB EPC RAM Maximum and 128 MB Network Controller
<b>Output Resolution</b>	600 x 600 dpi x 8 bit	
<b>Paper Handling</b>	75-sheet Duplex Automatic Document Feeder <b>Trays 1 – 2:</b> 550 sheets each; Size: Custom sizes from 5.5 x 8.5 in. / A5 to 11 x 17 in. / A3 <b>Tray 3:</b> 1,600 sheets; Size: 8.5 x 11 in. / A4; <b>Tray 4:</b> 2,000 sheets; Size: 8.5 x 11 in. / A4 <b>Bypass Tray (Tray 5):</b> 100 sheets; Custom sizes from 4.13 x 5.83 in. / 105 – 148 mm to 11 x 17 in. / A3	
<b>Finishing Options</b>	<b>Offsetting Catch Tray:</b> 300 Sheets; <b>Office Finisher:</b> 250-sheet top tray, 2,000-sheet stacking tray, multiposition stapling, optional 2 / 3 hole punching	
<b>Accounting</b>	Internal Audition, Additional Job-Based Accounting Options available	
<b>Copy</b> First-Copy-Out Time	3.4 seconds	
<b>Copy Features</b>	Build Job, AutoIQ image quality control, auto covers insertion, auto page insertions from up to two trays, multi-up copies, negative image, reverse image, image shift, auto center, auto reduction/enlargement, auto paper selection	
<b>Print</b> Processor / PDL Support	NA	433 MHz Intel® Celeron®, PCL® 5e, PCL® 6, PostScript® 3 emulation
<b>Connectivity</b>	NA	Ethernet 10/100BaseT, 10Base2, 10Base5 via adapter
<b>OS Support</b>	NA	Windows® 9x/Me®/NT® 4.0/2000/XP®, Novell® NetWare® 4.x/5.x/6, Solaris® 2.5.1/2.6+, HP-UX® 10.2/11, IBM AIX® 4.2+, Linux® Intel® (various), Mac® OS 8.x, 9.x, OS X
<b>Print Features</b>	NA	Concurrent scan-while-print, send-once/RIP-once/print-many technology, RIP-while-print multitasking, print drivers with custom graphical user interface, paper selection from the driver by type, embedded Web server for remote control/monitor/set-up, job monitoring and control at the device and at the desktop
<b>Scan</b> Scan Speed	NA	55 ppm
<b>Scan Destinations</b>	NA	Network Scanning, Scan to email
<b>Scan Destinations (Optional)</b>	NA	Scan to PC Desktop, FreeFlow SMARTsend, FreeFlow SMARTsend Professional
<b>Fax (Optional)</b>	Embedded Fax (33.6 kbps, one-line)	Embedded Fax (33.6 kbps, one-line), Internet Fax, Network Server Fax
<b>Other Options</b>	Xerox Copier Assistant™ Software, Foreign Device Interface, Copy Pre-collation RAM Upgrade (256 MB), Envelope Insert Kit, 50-sheet Convenience Stapler	Xerox Copier Assistant™ Software Foreign Device Interface, Copy Pre-collation RAM Upgrade (256 MB), Envelope Insert Kit, 50-sheet Convenience Stapler, Image Overwrite Security, Job-Based Accounting Enablement

## Total satisfaction guaranteed.

The exclusive Xerox Total Satisfaction Guarantee, recognized as unique in the industry, covers every Xerox CopyCentre® and WorkCentre Pro® which has been continuously maintained by Xerox or its authorized representatives under a Xerox express warranty or Xerox Maintenance agreement. You decide when you're satisfied.



© 2006 XEROX CORPORATION. All rights reserved. XEROX®, WorkCentre®, CopyCentre® and CentreWare® are trademarks of XEROX CORPORATION. In support of Xerox's environmental leadership goals, these models may contain some recycled components that are reconditioned. Support Center Practices (SCP) Certification is a registered trademark of Service Strategies Corporation. The "Editor's Choice" logo is the exclusive service mark of Better Buys for Business. ENERGY STAR® is a U.S. registered mark. As an ENERGY STAR® Partner, Xerox Corporation has determined that these products meet the ENERGY STAR® guidelines for energy efficiency. Terra Choice Environmental Services, Inc., of Canada has verified that these products conform to all applicable Environmental Choice EcoLogo requirements for minimized impact to the environment. Product appearance, build status and/or specifications are subject to change without notice. Printed in U.S.A. 05/06 610P726330 X55BR-01UA

## Unrivalled service and support.

Behind every Xerox product is a large network of customer support that's unrivalled in the industry and available when you need it. Xerox service professionals use leading-edge technologies to keep you up and running. They're even linked to the engineers who designed your product, so you can be confident when you choose Xerox. And genuine Xerox supplies are always easily available.