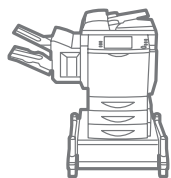


Xerox® WorkCentre®  
6400

Letter-size  
Color Multifunction  
Printer



# WorkCentre 6400 Color Multifunction Printer Evaluator Guide



# About this Guide

**This Evaluator Guide introduces you to the Xerox® WorkCentre® 6400 color multifunction printer,** describes its capabilities and features, and helps you in your printer evaluation process.

## Section 1: Introducing the WorkCentre 6400 Multifunction Printer

- 3 Product Overview
- 4 Configurations

## Section 2: Evaluating Color Multifunction Printers (MFPs)

- 6 Overview
- 7 Evaluate Deployment, Management and Ease of Use
- 10 Productivity
- 11 Versatility
- 14 Reliability
- 15 Security

## Section 3: Technical Specifications, Supplies and Support Resources

- 16 Configuration Summary
- 17 Specifications and Supplies
- 18 Support and Additional Information Sources

### WorkCentre 6400 Quick Facts

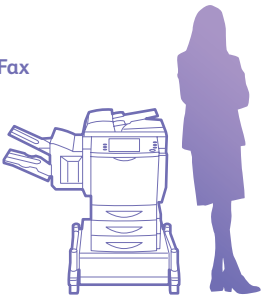
- 32 ppm color, 37 ppm black-and-white
- Up to 2400 x 600 dpi
- Standard automatic two-sided color copy/print
- True Adobe® PostScript® 3™, PCL 5c and PCL 6 support



Print/Copy/Scan/Fax

8.5 x 14 in.

32 ppm color



# Section 1: Introducing the Xerox® WorkCentre® 6400 Multifunction Printer

## Product Overview

**Unleash the productivity of your office.** We've taken the office-critical features of our large departmental MFPs and packed them into this ultraproductive letter-sized printer. It seamlessly integrates print, scan, fax and copy functionality, and adds smart management tools to simplify work for busy offices with high-volume color requirements.

### A Powerhouse Made for Sharing

From its advanced networking to fast operating speeds (up to 32 ppm color/37 ppm black-and-white), the WorkCentre 6400 is tailor-made for large workgroups.

- Multitasking. Access walk-up copying, scanning or faxing functions when you need them, even while other jobs are printing. Spend your valuable time working, not waiting for your turn.
- Never wait for a job on hold. Exclusive Print Around feature detects print jobs waiting for additional resources (such as a special paper size) and prints the next print job in the queue.

### All-in-one Simplicity

The WorkCentre 6400 gives your business crucial tools in an easy-to-use package.

- Walk-up use is intuitive thanks to the icon-based, 8-inch color touch screen with help screens. It shares the same simplicity our larger Xerox® devices are known for.
- Easy supplies replacement. Toners come pre-loaded and replacement is simple thanks to the easy-access front door, and email alerts notify you when levels are low.
- Automatic two-sided copying, printing and fax receipt reduces office paper use.
- Regulate use and control costs. Set limits to users' access to copy and fax functionality and control access to color. Generate usage reports for analysis and billing purposes.
- Scan routing made easy. LDAP capability integrates scanning with your network address book.
- Efficient finisher (standard on 6400XF) staples your documents or offset stacks jobs for grab-and-go convenience.
- Annotate, edit and organize scanned image files with Xerox® Scan to PC Desktop® SE Personal Edition (standard). Convert scanned documents to editable text formats such as Microsoft® Word® and Excel®.

### Your Processes Simplified

The WorkCentre 6400 delivers advanced, easy-to-use technologies that streamline your business-critical work processes.

- Turn a shared multifunction printer into your own personal multifunction printer. The WorkCentre 6400 is built on the powerful Xerox® Extensible Interface Platform® (EIP), a web- and standards-based technology that lets you add applications for easy access right from the touch screen. For example, Scan to PC Desktop software (optional Professional version) seamlessly integrates with EIP for customized scanning menus that match your specific workflows.
- Full-functioned scanning includes a wide range of document routing capabilities. Store scans in a public or private folder on the hard drive with Scan to Mailbox. Send files to a pre-assigned "home" destination with Scan to Home. Scan files directly to email addresses or store on a central server with network scanning.
- Automate repetitive job processes by automatically routing scanned documents to predefined folders on your computer or as attachments to emails with convenient scan templates.
- Store frequently printed documents directly on the device for reprinting later.
- Convert paper documents to text-searchable PDFs in one step for easy archiving, organizing and searching.

# Section 1: Introducing the Xerox® WorkCentre® 6400 Multifunction Printer Configurations



## WorkCentre 6400S

The WorkCentre 6400 delivers standard network printing, copying and network scanning.

### Print Capabilities

- Print speeds of up to 32 ppm color/37 ppm black-and-white (Letter); up to 30 ppm color/35 ppm black-and-white (A4)
- Automatic two-sided output
- First-page-out Time (FPOT) as fast as 16 seconds
- Up to 2400 x 600 dpi print resolution
- **Page Description Languages:** PCL® 5c, PCL 6, Adobe® PostScript® 3™, PDF 1.6, TIFF, JPEG
- **Print Features:** Automatic two-sided, Custom page size, N-Up, Banner sheet, Inserts, Covers, Booklet creation, Mirror image, Collation, Watermarks, Scaling, Print Around, Sample set, Secure print, Delayed print, Saved Job

### Copy Capabilities

- Copy speed of up to 32 ppm color/37 ppm black-and-white (Letter/A4)
- Automatic two-sided output
- Standard Duplex Auto Document Feeder (DADF)
- First-copy-out Time (FCOT) as fast as 16 seconds
- 600 x 600 dpi copy resolution
- **Copy Features:** Automatic two-sided, Collation, Reduce/Enlarge 25 to 400%, Lighten/darken, Booklet creation, covers, Inserts, Annotations, Bates Stamping, Transparency separators, Multiple-up, Build Job, Sample copy, Save copy settings

### Scan Capabilities

- Up to 30 ipm color/35 ipm black-and-white scan speed (via DADF)
- Automatic two-sided scanning (via DADF)
- Up to 600 x 600 dpi scan resolution
- **File Formats:** PDF, JPEG, TIFF, Multipage TIFF
- **Scan Destinations:** Scan to Mailbox, Scan to Email, Scan to File, Scan to Home
- **Scan Software:** Xerox® Scan to PC Desktop® Personal Edition

### Controller

- 800 MHz processor
- Memory: 1 GB
- 80 GB hard drive
- **Connectivity:** 10/100/1000Base-TX Ethernet, USB 2.0 (print only), IPv4 and IPv6

### Paper Handling (standard)

- **DADF:** 50 sheets; Custom sizes: 5.8 x 8.3 in. to 8.5 x 14 in./148 x 210 mm to 216 x 356 mm; Weights: 12.5 to 28 lb./50 to 105 gsm
- **Multipurpose Tray 1:** 100 sheets; Custom sizes: 3.6 x 5.8 in. to 8.5 x 14 in./97 x 147 mm to 216 x 356 mm; Weights: 16 lb. bond to 80 lb. cover/60-210 gsm; Weights (duplex): 16 lb. bond to 40 lb. bond/60-150 gsm
- **Tray 2:** 500 sheets; Sizes: 8.5 x 11 in./A4 (210 x 297 mm); Weights: 16-24 lb. bond/60-90 gsm
- **Media Types:** plain paper, transparencies, card/cover, glossy, labels, envelopes

### Paper Handling (optional)

- **500-sheet Feeder** (Tray 3 and Tray 4): Sizes: Letter, Legal, Executive, US Folio, A4, B5 JIS; Weights: 16-24 lb. bond/60-90 gsm

### Finishing (optional)

- 600-sheet Finisher with 30-sheet stapling

### Reliability

- Duty cycle up to 120,000 pages/month\*
- One-year on-site warranty, Xerox® Total Satisfaction Guarantee

\*Maximum volume capacity expected in any one month. Not expected to be sustained on a regular basis



## Xerox® WorkCentre® 6400X

Builds on the WorkCentre 6400S with the addition of:

### Fax Capabilities

- Transmission Speed: 33.6 Kbps modem
- Up to 600 x 600 dpi (Super Fine) resolution
- Embedded Fax
- LAN Fax
- Internet Fax
- Network Server Fax enablement
- Fax Features: Junk fax filter, Mailboxes and Polling, Secure Fax, Delayed Send, Speed dials (up to 200), Group dials



## WorkCentre 6400XF

Builds on the WorkCentre 6400X with the addition of:

### Paper Handling (standard)

- 500-sheet Feeder (Tray 3 and Tray 4)
  - Sizes: Letter, Legal, Executive, US Folio, A4, B5 JIS; Weights: 16-24 lb. bond/60-90 gsm

### Finishing (standard)

- 600-sheet Finisher with 30-sheet stapling

## Optional

Configure the WorkCentre 6400 to meet your specific needs with a range of optional accessories:

### Controller

- Wireless Ethernet networking
- Foreign Device Interface

### Paper Input

- 500-sheet feeder (Tray 3 and Tray 4)\*

### Finishing

- 600-sheet Finisher with 30-sheet stapling\*

### Miscellaneous

- Stand

\*Standard on WorkCentre 6400XF configuration.

# Section 2: Evaluating Color Multifunction Printers (MFPs)

## Overview

**Based on continuous study of our customers' business-productivity requirements,** it is recommended that the following criteria be used when evaluating which color MFP to purchase for your office.

### Deployment, Management and Ease of Use

How does the MFP simplify deployment, management and daily use?

### Productivity

Can the MFP keep up with the demands of your daily and monthly workloads?

### Versatility

Does the MFP deliver the range of capabilities your office requires?

### Reliability

Is the MFP durable enough to meet users' demands, and is it backed by quality service?

### Security

Does the MFP help ensure that confidential information stays private?

This section examines each of the above evaluation criteria in greater detail, covering the specific features and performance attributes you should look for in a color workgroup MFP. When the same criteria are used to evaluate every device under consideration, you'll see how the Xerox® WorkCentre® 6400 color multifunction printer excels against other manufacturers' products.





# Section 2: Evaluating Color Multifunction Printers (MFPs)

## Evaluate Deployment, Management and Ease of Use

**Installing a multifunction device can be challenging**, whether an IT staff handles deployment in a larger organization or if the MFP is being installed in a smaller office with no IT resources. The process isn't limited to physically placing the unit in its new environment, but also may include integration with an existing network infrastructure. Also, consider the steps required to deploy printing and scanning services to multiple users; can the process be automated? Evaluate the management tools delivered with the MFP, and whether they will ease the task of managing the device. Lastly, think about ease of use. Is the device simple to operate, and will users quickly feel comfortable with it? Are the user interfaces, both the front panel and print driver, well designed and easy to navigate?

### How the Xerox® WorkCentre® 6400 exceeds the deployment requirement:

#### Installation

Easy installation starts with unpacking the MFP and ends when it's powered up, connected to your network, and ready to use. The WorkCentre 6400 multifunction printer includes a quick install guide, which walks you through the installation of optional accessories, connecting the MFP to the network and a power source, and initial start-up. Settings such as language selection and feature setup are completed either at the large, color touch-screen on the WorkCentre 6400 multifunction printer's front panel, or via the use of remote management software such as Xerox® CentreWare® IS or CentreWare Web.

#### Easy Driver Deployment

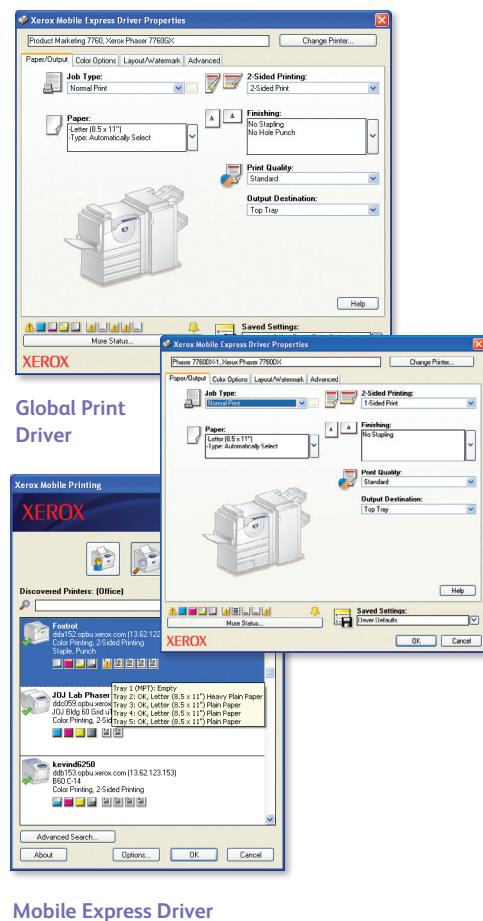
Xerox includes an installation CD that features an easy, wizard-based process to install print and scan drivers. If preferred, print drivers can be easily downloaded from the Xerox website. Also, drivers can automatically be installed in offices that utilize remote desktop-management software.

Plus, the WorkCentre 6400 supports two innovative new print drivers that can greatly simplify installing, managing and supporting printers and multifunction devices on the network, and increase end-user productivity:

- Xerox® Mobile Express Driver® (X-MED) makes it easy for mobile users to find, use and manage Xerox® and non-Xerox devices in every new location. Plug into a new network, and X-MED automatically discovers available printers and provides status and capability information. Save a list of "favorite" printers for each location, store application print settings for use on any printer in any network, and greatly reduce mobile support calls to IT.
- Xerox® Global Print Driver® (X-GPD) is a truly universal print driver that lets IT administrators install, upgrade and manage Xerox® and non-Xerox devices from a single driver. It provides a consistent, easy-to-use interface for end-users, reducing the number of support calls, and simplifying print services management.

In addition, these drivers provide users with a consistent single interface for all printers, with real-time, dynamic reports of printer status. As a result, users can easily identify the best printer for their needs, quickly choose the correct options and see updated consumables status without the assistance of IT.

To learn more, and to download X-GPD and X-MED free, visit [www.xerox.com/global](http://www.xerox.com/global) and [www.xerox.com/mobile](http://www.xerox.com/mobile).



## How the Xerox® WorkCentre® 6400 exceeds the management requirement:

### Xerox® Management Software

Xerox® CentreWare® Web is a powerful device management solution for IT departments. This free software eases the chore of installing, configuring, managing, monitoring and pulling reports from SNMP-compliant networked printers and multifunction printers throughout your enterprise – regardless of vendor. Xerox also addresses enterprise asset management through compatibility with network management tools for Sun®, Novell®, Microsoft® and other environments.

The WorkCentre 6400 multifunction printer also includes CentreWare IS, an embedded web server that allows users and IT personnel to perform detailed status checks on the system and consumables, administer system settings, and manage access and accounting controls via any standard web browser.

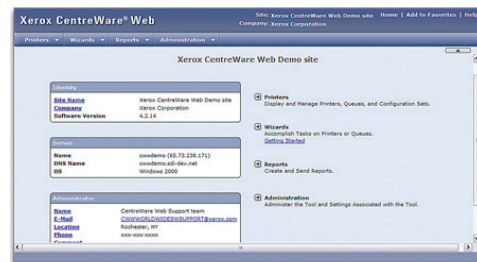
Xerox® Standard Accounting software adds helpful remote-management capabilities, such as additional reporting options, setting quotas and output limits, and more.

### Network Management

The WorkCentre 6400 multifunction printer integrates into virtually any network environment. Network configuration is simple via the front panel, CentreWare IS or CentreWare Web. The WorkCentre 6400 multifunction printer supports many common network protocols and integrates with various network management applications via CentreWare plug-ins.

### Xerox® Office Services

Lastly, Xerox offers a host of productivity-enhancement services for managing an office's document output and asset infrastructure. Such services deliver measurable business results by leveraging a powerful set of office technologies, business processes, methodologies and software tools to reduce costs and improve productivity. These offerings are summarized in Section 3 of this guide.



CentreWare Web provides easy, wizard-based setup and administrative assistance.



The 8-inch, full-color touch screen on the WorkCentre 6400 features large, intuitive icons for easy walk-up operation.



## How the Xerox® WorkCentre® 6400 exceeds the ease-of-use requirement:

### Color Front Panel Interface

The WorkCentre 6400 multifunction printer's cutting-edge, 8-inch, full-color touch screen redefines walk-up ease-of-use. Whether printing, copying, scanning, faxing or emailing, the bright, colorful display guides users from start to finish with large, clear, easily recognizable icons. Once a feature is selected, the tab-based interface gives users fast access to the most commonly-accessed features with intuitive navigation to advanced settings. Buttons to the left of the color screen give single-click access to the feature-selection screen, the default feature screen (usually copy), job status and machine status. Buttons to the right of the screen include an alpha-numeric keypad and the start button, and familiar buttons for powering on the device, clearing job programming, interrupting a current job and stopping a job.

### Bi-directional Print Drivers

Print drivers for the WorkCentre 6400 multifunction printer provide easy, intuitive job programming as well as updated system-status information. Like the front-panel user interface, the print drivers are organized by tabs for intuitive access to features. The most commonly used features are located on the default tab, with advanced features easily accessible when programming more complex jobs. The print drivers also provide bi-directional information such as system status, consumable status, job status, currently loaded paper sizes, installed options and more.

### Easy Supplies Replacement

Toners come pre-loaded and replacement is simple thanks to the easy-to-access front door, and email alerts notify you when levels are low.

### Xerox® Extensible Interface Platform® (EIP)

Xerox® EIP is a software platform inside the WorkCentre 6400 that enables personalized solutions users can access right from the device touch screen. These applications can leverage your company's existing databases and meet your specific business challenges.

#### Users benefit from simplified and personalized workflows.

- Simplify user experience. A user swipes his or her company ID badge at the device, and an EIP solution can present user-specific print jobs, workflows and settings on the touch screen.
- A new employee becomes productive immediately; instead of needing to learn a complex order fulfillment sequence, he or she simply scans in a paper order, presses a button on the touch screen, and the EIP application correctly routes the order.

#### Get more out of your hardware and infrastructure investment.

- EIP applications leverage your existing databases and systems. This two-way communication allows you to query your databases and choose the appropriate customer or project folder when storing a scanned document.
- Reduce abandoned print jobs and increase productivity. Send documents to a virtual queue and an EIP application can let you log onto any available device on the network to print your job.

IT professionals enjoy ease of integration.

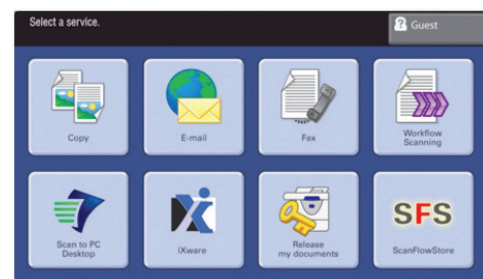
- Managing applications across a fleet of devices is easy. Make updates at the server level and those changes become live on all EIP-devices on the network, regardless of location or product model, eliminating the need to load software on each individual device.
- Use active directory to provide various departments and groups access to certain features and personalized scanning workflows.

#### In-house developers can tailor applications to address unique needs.

- Build user-friendly touch screen interfaces that work the way your business works.
- EIP is based on web standards such as HTML, CSS, XML and JavaScript, speeding programming and making new application development fast and easy.



Pre-loaded toners are easy to access and replace.



The WorkCentre 6400 multifunction printer's user interface shown with EIP-customized functions.

# Section 2: Evaluating Color Multifunction Printers (MFPs) Productivity

**In addition to print engine speed, consider other attributes that affect overall throughput.** Does the MFP include productivity-enhancing capabilities, such as a Duplex Automatic Document Feeder (DADF) to ease the processing of two-sided originals? Will your documents be printed with the image quality users need? Does the MFP feature the connectivity choices your office requires, and does it include a hard drive that can store frequently needed documents for fast reprinting at the device? Can jobs be programmed while the MFP is busy outputting an earlier job? Is device-status information available at both the device and a user's desktop?

## How the Xerox® WorkCentre® 6400 multifunction printer exceeds the productivity requirement:

### Performance

The WorkCentre 6400 multifunction printer quickly outputs even the most graphic-heavy documents, whether single or double-sided, with print speeds as fast as 32 pages per minute for color, 37 pages per minute for black-and-white (as fast as 30/35 ppm A4). Long jobs are quickly completed, and with a first-page-out time (FPOT) as fast as 16 seconds you won't wait long for short jobs, either. Multipage and double-sided copy, scan and fax jobs are processed in a single pass through the 50-sheet DADF, minimizing time spent feeding originals into the MFP.

### Image Quality

Whether printing presentations, reports or simple emails – the WorkCentre 6400 multifunction printer delivers impressive results with up to 2400 x 600 dpi image quality. Also, Xerox includes support for multiple page description languages including Adobe® PostScript® 3™ and PCL® 5c and PCL 6.

### Network Performance

The WorkCentre 6400 multifunction printer's performance isn't limited to raw document feeds and speeds. With a controller that includes an 800 MHz processor and 1 GB of

memory, along with standard support for USB 2.0 and 10/100Base-T connectivity, the WorkCentre 6400 multifunction printer quickly processes jobs while minimizing network traffic. Plus, the 80 GB hard drive allows frequently printed documents, such as business forms, to be stored on the MFP's hard drive and reprinted directly from the front panel.

### Multitasking

The WorkCentre 6400 multifunction printer's network controller also helps prevent bottlenecks at the front panel. By keeping the front panel available for programming, users can stay productive and avoid idle time waiting for the MFP. No more waiting until a long print job is complete to program a fax, scan or copy job. Scan and fax jobs can be programmed and executed without waiting for the print engine to become available, while newly programmed copy jobs will join the job queue and be executed when earlier jobs are completed.

### Monitoring System Status

Whether at your desk or at the WorkCentre 6400 multifunction printer's front panel, current information is available on every job the MFP processes as well as in-depth device status. See the list of jobs currently in the print queue, the number of daily outgoing fax transmissions, paper-level status, and total page output counts without leaving your desk via Xerox® CentreWare® Internet Services or the print driver, or via the device's front panel.



Color prints are vibrant and precise thanks to 2400 x 600 dpi image quality.

## Section 2: Evaluating Color Multifunction Printers (MFPs)

### Versatility

**How many functions can the device perform?** Does the integration of multiple functions into a single device result in the MFP sacrificing important capabilities, such as print or copy performance? Does MFP deliver a level of all-around performance that will enable the replacement of multiple devices on your network? Does the MFP include support for the types of media users utilize on a regular basis?

#### How the Xerox® WorkCentre® 6400 multifunction printer exceeds the versatility requirement:

##### Print Features

At its core, the WorkCentre 6400 multifunction printer is a high-performance network printer capable of handling the color and black-and-white printing workload of busy offices and workgroups. Print speeds as fast as 32 pages per minute (ppm) for color, 37 ppm for black-and-white, first-page-out time as fast as 16 seconds and automatic two-sided printing make quick work of long jobs while conserving paper. Up to 2400 x 600 dpi image quality plus support for Adobe® PostScript® 3 and PCL® 5c and 6 also ensure impressive results.

The WorkCentre 6400 multifunction printer's strong performance is backed by a set of printing features that include:

- **N-up:** saves paper by printing multiple pages onto each sheet
- **Print Around:** holds a problem job that needs resources (such as a different paper size) and prints the next job in the queue
- **Secure / Delayed Print:** print jobs are held in memory until a PIN code is entered at the front panel, ensuring prints are not left unattended at the MFP
- **Sample Set:** allows users to proof a sample document before printing entire job
- **Booklet Creation:** formats and arranges pages for folding as booklet

- **Print To and From Hard Drive:** store frequently accessed documents on the MFP for fast reprinting at the device
- **Watermarks:** adds custom watermarks, such as "DRAFT" or "CONFIDENTIAL," to printed documents

##### Copy Features

As with printing, the WorkCentre 6400 multifunction printer is a high-performance color and black-and-white copier for busy offices and workgroups. With copy speeds as fast as 32 ppm for color and 37 ppm for black-and-white, first-copy-out time as fast as 16 seconds and automatic double-sided copying of double-sided originals (via the DADF), the WorkCentre 6400 multifunction printer delivers high-end productivity in a desktop device.

Beyond high-performance copying, the WorkCentre 6400 multifunction printer delivers a strong set of copy features as well:

- **Booklet Creation:** formats and arranges pages for folding as booklet
- **Collation:** automatic (via DADF only)
- **Covers:** choose special media for cover pages
- **Multi-up:** saves paper by printing multiple pages onto each sheet
- **Sample Copy:** allows users to proof a sample document before copying entire job
- **Reduce / Enlarge:** 25 to 400 % from both the platen and the DADF with 10 preset zooms
- **Transparency Separators:** inserts blank or printed plain paper between printed transparencies



The WorkCentre 6400 features standard print, copy and scan functionality.

- **Annotation and Bates Stamping:** adds sequential page numbering, date, and time marks, copyright information, and other information to copy output – a key feature for legal and healthcare environments

#### ScanFeatures

The Xerox® WorkCentre® 6400 multifunction printer includes powerful scanning that helps streamline your company's work processes, serving as a digital on-ramp for distributing, editing and archiving hard copy documents. Built-in file formats include PDF, JPEG, TIFF and multi-page TIFF, and the 50-sheet DADF automates the scanning of lengthy documents and double-sided originals.

The WorkCentre 6400 multifunction printer offers a number of scan destinations to support your work processes, including:

- **Scan to Email:** sends scans to email recipients, with authentication and LDAP for network security and integration
- **Network Scanning:** templates enable distribution of scanned images to multiple predefined locations

In addition, the WorkCentre 6400 multifunction printer is packaged with Xerox® Scan to PC Desktop® Personal Edition scan software, which includes the following applications:

- **Nuance® PaperPort® SE:** simplifies the scanning, organizing and sharing of documents
- **OmniPage® SE:** converts paper documents into editable Word and Excel files
- **Image Retriever:** automates retrieval of scanned images from Xerox® devices

#### Fax Features

The WorkCentre 6400X and 6400XF configurations add fax functionality with a 33.6 Kbps fax modem, up to 300 x 300 dpi (superfine) resolution, plus a set of features you'd expect to find on dedicated fax systems, including:

- **LAN Fax:** transmits faxes digitally from desktop computers via print driver
- **Internet Fax:** transmits faxes digitally via the internet with support for SMTP and POP3
- **Compression:** MH, MR, MMR
- **Speed Dial:** up to 200 locations
- **Group Dial:** allows a single fax to be sent to multiple recipients simultaneously
- **Polling:** stores fax documents in the MFP's memory for retrieval by another remote fax machine
- **PC Fax (send):** transmits electronic documents directly from a computer via print driver
- **Secure Fax Receive:** holds incoming faxes until PIN is entered by the intended recipient at the device
- **Network Server Fax Enablement:** allows faxes to be sent and received digitally over the network with support for SMTP and POP3



The WorkCentre 6400XF configuration adds standard fax functionality.

## Media Support

The Xerox® WorkCentre® 6400 multifunction printer offers the paper capacity and media support necessary to meet the daily needs of small offices and workgroups that produce a wide variety of documents.

### Paper Capacity:

- 600 sheets standard, 1,600 sheets maximum
- **DADF:** 50 sheets
- **Multipurpose Tray 1:** 100 sheets
- **Tray 2:** 500 sheets
- **Feeder; Tray 3 and Tray 4 (optional):** 500 sheets each
- **Output Tray:** 500 sheets

### Supported Media Sizes:

- **DADF:** Custom sizes: 5.8 x 8.3 in. to 8.5 x 14 in./148 x 210 mm to 216 x 356 mm
- **Multipurpose Tray 1:** Custom sizes: 3.6 x 5.8 in. to 8.5 x 14 in./ 97 x 147 mm to 216 x 356 mm
- **Tray 2:** Sizes: 8.5 x 11 in./A4 (210 x 297 mm)
- **500-sheet Feeder; Tray 3 and Tray 4 (optional):** Letter, Legal, Executive, US Folio, A4, B5 JIS: 16-24 lb. bond/ 60-90 gsm

### Supported Media Weights:

- **DADF:** 12.5 to 28 lb./50 to 105 gsm
- **Multipurpose Tray 1:** 16 lb. bond to 80 lb. cover/60-210 gsm; Duplex: 16 lb. bond to 40 lb. bond/60-150 gsm
- **Tray 2 and optional 500-sheet Feeder (Tray 3 and Tray 4):** 16-24 lb. bond/ 60-90 gsm

### Supported Media Types:

- **All trays:** Plain paper, transparencies, card/cover, glossy, labels, envelopes



The WorkCentre 6400 handles a wide range of media weights and sizes, and is available with a paper capacity of up to 1,600 sheets.





## Section 2: Evaluating Color Multifunction Printers (MFPs) Reliability

**Office productivity is tied directly to the reliability of the devices upon which users depend.** Consider whether the MFP helps proactively avoid disruptions in operations. If a disruption occurs, will the device help you diagnose and address the issue?

### **How the Xerox® WorkCentre® 6400 multifunction printer exceeds the reliability requirement:**

#### **Day-to-day Reliability**

With a rated duty cycle of up to 120,000 pages per month\*, the WorkCentre 6400 multifunction printer easily handles the normal daily workloads, as well as the heaviest peak-period workloads, of workgroups as large as 10 employees. The WorkCentre 6400 also helps avoid paper-reloading interruptions, with a standard 600-sheet paper capacity and the option to increase total capacity to 1,600 sheets. Plus, proactive reporting of the current toner level prevents unnecessary downtime, ensuring that you'll have a replacement cartridge on hand when it's needed. Choose high-capacity print cartridges for extended printing.

\* Maximum volume capacity expected in any one month. Not expected to be sustained on a regular basis

#### **Troubleshooting**

The WorkCentre 6400 multifunction printer helps users avoid unnecessary downtime and backups at the device. If the printer requires intervention during a print job, a notification will alert the user at his or her desk with specific instructions for how to get the MFP back up and running. Clicking on the notification will provide graphical instructions as to what action the device requires, and similar graphical instructions will be available at the MFP's front panel as well.

#### **Service / Support**

Building on the reliability engineered into the WorkCentre 6400 multifunction printer, Xerox has implemented a sophisticated service-delivery network capable of maintaining your equipment, addressing issues, and training IT staff and users on how to get the most out of your Xerox® purchase.



# Section 2: Evaluating Color Multifunction Printers (MFPs) Security

## In today's business environment, data security is a critical competency.

The technology you deploy into your organization must have a complete set of capabilities to help safeguard your confidential information. Does the device have the security features to meet these demands? Can device access be password protected? Does the system remove latent images from its hard drive? Does the system have features in place to protect confidential documents?

### How the Xerox® WorkCentre® 6400 multifunction printer exceeds the security requirement:

#### Integrated Security

The WorkCentre 6400 multifunction printer delivers security features that safeguard confidential information at all points of document vulnerability:

#### Document

- **Secure Fax** requires entry of a PIN access code before the received fax is printed.
- **Secure Print** holds print jobs until released at the device by the job owner.
- **Watermark** places watermarks on prints and copies that prevent or obscure attempted copies.

#### Device

- **Network Authentication** restricts access to device features and management settings by validating user names and passwords.

#### Hard Drive

- **Disk Encryption** applies 128-bit encryption to data stored on the device's hard drive.

- **Disk Overwrite** electronically "shreds" data stored on the device's hard drive automatically after every job or as scheduled by an administrator.

#### Network

- **IEEE 802.1X Protocol** ensures devices connected to the network are properly authenticated.
- **IPv4 and IPv6 Support** for networks utilizing the IPv4 and IPv6 standards.



Confidential information stays protected thanks to the WorkCentre 6400 multifunction printer's advanced security technologies.

# Section 3: Technical Specifications, Supplies and Support Resources

## Configuration Summary



		Xerox® WorkCentre® 6400S	WorkCentre 6400X	WorkCentre 6400XF
<b>Speed</b>		Up to 32 ppm color / 37 ppm black-and-white (Letter); Up to 30 ppm color / 35 ppm black-and-white (A4)		
<b>Duty Cycle</b>		Up to 120,000 pages / month*		
<b>Paper Handling</b>				
Paper Input	Standard	<b>Duplex Automatic Document Feeder:</b> 50 sheets; Custom Sizes: 5.8 x 8.3 in. to 8.5 x 14 in. / 148 x 210 mm to 216 x 356 mm; Weight: 12.5 to 28 lb / 50 to 105 gsm <b>Multipurpose Tray 1:</b> 100 sheets; Custom sizes: 3.6 x 5.8 in. to 8.5 x 14 in. / 97 x 147 mm to 216 x 356 mm <b>Tray 2:</b> 500 sheets; Sizes: 8.5 x 11 in. / A4 (210 x 297 mm)		
	Optional	<b>Tray 3 and Tray 4:</b> 500 sheets; Sizes: Letter, Legal, Executive, US Folio, A4, B5 JIS		Standard
Paper Output		500 sheets, automatic two-sided		
Finishing	Optional	<b>Finisher:</b> 600-sheet tray, 30-sheet stapling		Standard
<b>Print</b>				
First-page-out Time		As fast as 16 seconds		
Print Resolution		Up to 2400 x 600 dpi		
Processor / Memory		800 MHz / 1 GB plus 80 GB hard drive		
Page Description Languages		PCL® 5c, PCL 6, Adobe® PostScript® 3™, PDF 1.6, TIFF, JPEG		
Connectivity		USB 2.0 (for print only), 10/100/1000 Base-TX Ethernet, IPv4 and IPv6		
Print Features		Automatic Two-sided, Custom Page Size, N-Up, Banner Sheet, Inserts, Covers, Booklet Creation, Mirror Image, Collation, Watermarks, Scaling, Print Around, Sample Set, Secure Print, Delayed Print, Saved Job		
<b>Copy</b>				
Copy Resolution		600 x 600 dpi		
Copy Features		Automatic Two-sided, Collation, Reduce / Enlarge 25 to 400%, Lighten / Darken, Booklet Creation, Covers, Inserts, Annotations, Bates Stamping, Transparency Separators, Multiple-up, Build Job, Sample Copy, Save Copy Settings		
<b>Fax</b>		Embedded Fax**, LAN Fax, Internet Fax, Network Server Fax support		
Fax Features	NA	Up to 600 x 600 dpi (Super Fine) resolution, Junk Fax Filter, Mailboxes and Polling, Secure Fax, Delayed Send, Speed Dials (up to 200), Group Dials		
<b>Scan</b>				
Scan Destinations		Scan to Mailbox, Scan to Email, Scan to File, Scan to Home		
Scan Features		Up to 600 x 600 dpi, File formats: PDF, Searchable PDF, TIFF, Multi-page TIFF, JPEG; Xerox® Scan to PC Desktop® SE Personal Edition (includes 1 seat of PaperPort® SE, OmniPage® SE, Image Retriever)		
<b>Accounting</b>		Job-based Accounting, Xerox® Standard Accounting, Network Accounting enablement		
<b>Security</b>		Disk Overwrite, Job Overwrite, Disk Encryption, 802.1X, Secure Print, Authentication, Secure Fax		
<b>Warranty</b>		One-year On-site Warranty, Xerox® Total Satisfaction Guarantee		

\* Maximum volume capacity expected in any one month. Not expected to be sustained on a regular basis

\*\* Analog phone line required

# Section 3: Technical Specifications, Supplies and Support Resources

## Specifications and Supplies

Specifications			
<b>Device Management</b>	Xerox® CentreWare® Internet Services, CentreWare Web		
<b>Print Driver Support</b>	Windows® Server 2003/Server 2008/XP/XP Professional/Vista Macintosh OS X v10.3 and higher Linux® TurboLinux® 10 Desktop, SUSE®, Red Hat® Xerox® Global Print Driver®, Xerox® Mobile Express Driver®		
<b>Operating Environment</b>	<b>Temperature:</b> Operating: 50° to 90° F (10° to 32° C) <b>Relative Humidity:</b> Operating: 15 % to 85 %		
<b>Electrical</b>	<b>Power:</b> 110-127 VAC, 50/60 Hz <b>Power Consumption:</b> • Standby: 161W • Printing: 802W • Power Save: 26 W		
<b>Dimensions</b> • Width x Depth x Height • Weight	<b>Xerox® WorkCentre® 6400S and 6400X:</b> • 20.8 x 23.1 x 24.7 in. (530 x 588 x 627 mm) • 130 lbs. (59 kg) <b>WorkCentre 6400XF:</b> • 39.7 x 26.5 x 46 in. (1,008 x 673 x 1,169 mm) • 243 lbs. (110 kg)		
<b>Agency Approvals</b>	FCC Part 15, Class A, Part 68, CE mark applicable to Directives 2006/95/EC, 2004/108/EC and 1999/EC, Listed UL 60950-1/CSA 60950-1-03		
<b>Supplies and Routine Maintenance Items</b>	<b>Description</b>	<b>Details</b>	<b>Part Number</b>
	Standard-Capacity Print Cartridge <sup>2</sup>	Cyan: 8,000 pages	106R01320
		Magenta: 8,000 pages	106R01321
		Yellow: 8,000 pages	106R01322
	High-Capacity Print Cartridge <sup>2</sup>	Black: 12,000 pages	106R01316
		Cyan: 16,500 pages	106R01317
		Magenta: 16,500 pages	106R01318
	Imaging Unit <sup>3</sup>	Yellow: 16,500 pages	106R01319
		Cyan: 30,000 pages	108R00775
		Magenta: 30,000 pages	108R00776
		Yellow: 30,000 pages	108R00777
		Black: 30,000 pages	108R00774
	Waste Cartridge (Qty. 2)	22,000 pages each	108R01368
	110V Fuser	150,000 pages	115R00059
<b>Accessories</b>	<b>Description</b>	<b>Details</b>	<b>Part Number</b>
	Feeder (Tray 3 and Tray 4)	500-sheet capacity	097S03874
	Finisher	600-sheet tray, 30-sheet stapling	097S03875
	Stand with Storage		097S04552
	Foreign Device Interface		097S03872
	Network Accounting Enablement		098S04928
	Network Fax Server Enablement		098S04931
	Wireless Network Adapter		097S03740
<b>Extended Service Agreements</b>	Annual On-Site Service Agreement		E6400SA
	2 Years Additional (total of 3 years) <sup>1</sup>		E6400S3
	3 Years Additional (total of 4 years) <sup>1</sup>		E6400S4

<sup>1</sup> Available for purchase during first 90 days of ownership.

<sup>2</sup> Average standard pages. Declared Yield in accordance with ISO/IEC 19798. Yield will vary based on image, area coverage and print mode.

<sup>3</sup> Approximate pages. Declared Yield based on an average job size of 3 pages letter/A4 size. Yield will vary based on job run length, media size and orientation.

# Section 3: Technical Specifications, Supplies and Support Resources

## Support and Additional Information Sources

### Unrivaled Service and Support

Behind every Xerox® product is a large network of customer support that's unrivaled in the industry and available when you need it. Xerox® service professionals use leading-edge technologies to keep you up and running. They're even linked to the engineers who designed your product, so you can be confident when you choose Xerox. And Genuine Xerox® supplies are always readily available.

### Total Satisfaction Guaranteed

The exclusive Xerox® Total Satisfaction Guarantee, recognized as unique in the industry, covers every Xerox® WorkCentre® device that has been continuously maintained by Xerox or its authorized representatives under a Xerox® express warranty or Xerox® maintenance agreement. You decide when you're satisfied.

### Xerox® Office Services Support

#### Asset Management Services

- Asset Optimization and Tracking: Process and tools to optimize an enterprise's office output infrastructure and reduce overall costs.
- Break-Fix Management: Single point of ownership and management for break-fix service for all brands of office output devices.
- Supplies Management: Process and tools to procure, monitor and replenish all document-related supplies proactively.

#### Imaging and Output Management Services

- Output Management: Single point of management of office output from all output devices, regardless of manufacturer.
- Image Capture and Workflow: Cost-efficient solutions for capturing, managing, retrieving and distributing information into digital repositories.

#### Support Services

- Technology Procurement and Deployment: A creative and flexible end-to-end print / computer product acquisition solution that uses a single-point-of-contact model while lowering the total cost of acquisition.
- Help Desk Services: A broad range of enterprise services managed through a centralized single point of contact and delivered through an on-site or off-site model.
- End User Services: Microsoft software implementation, IT project consulting, and customer education.

#### Access Managed Services

- Student and Library Patron Access: Custom designed and implemented customer-managed solutions for student and library patron print access management.

### Additional Information Sources

#### What's in the Box:

- WorkCentre 6400 multifunction printer
- Print Cartridge (8,000 print capacity<sup>1</sup> for CMY and 12,000 print capacity<sup>1</sup> for Black)
- World Kit (includes Printer Installer and utilities CD, Software and document CD, Warranty booklet)
- Power Cord

#### WorkCentre 6400 Front Panel:

The front panel offers tools and information pages to help with machine setup, feature selections, operational problems, media-feed and supply issues.

#### On the Web:

Visit [www.xerox.com/office](http://www.xerox.com/office) for:

- Product, supplies and support information
- Downloading drivers
- Finding your local Xerox® sales representative
- Online documentation

Visit [www.xerox.com/office/support](http://www.xerox.com/office/support) for: Support and service information, including the same troubleshooting Knowledge Base used by Xerox® Customer Support staff to provide the latest technical information on:

- Application issues
- Errors
- Print-quality issues
- Troubleshooting

<sup>1</sup> Average standard pages. Declared Yield in accordance with ISO/IEC 19798. Yield will vary based on image, area coverage and print mode

# Notes

## Questions? Comments? Problems?

If you have any questions, please contact your Xerox® sales representative, call **1-877-362-6567**, or visit us on the web at [www.xerox.com/office](http://www.xerox.com/office).

