

BERTL

OUTSTANDING



Xerox WorkCentre 5790



90-ppm Monochrome

Print • Copy • Scan • Fax

Key Buyer Benefits

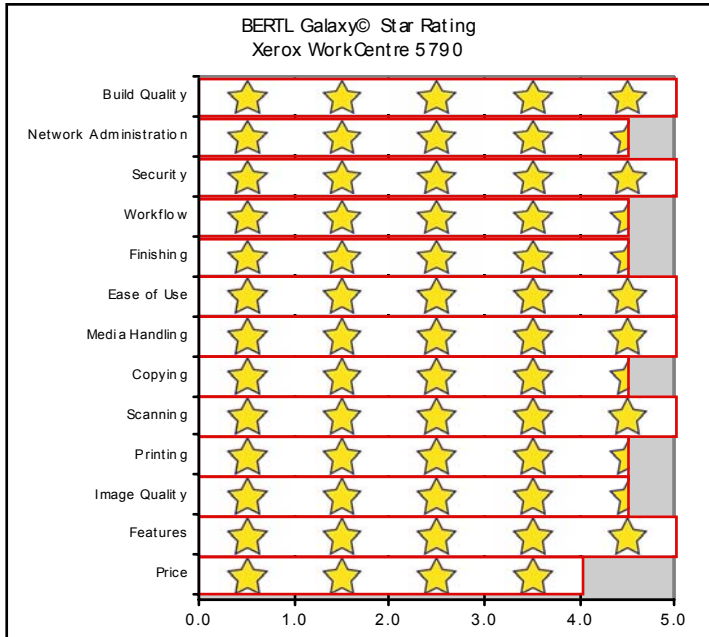
- Excellent print and copy productivity
- High print resolution up to 1200 x 1200 dpi creates professional presentations, graphics and office documents
- Large 8 inch full-color LCD touch panel with intuitive graphical display
- Great design and ease-of-use with the PCL5e, PCL6, and PostScript drivers
- Outstanding ease-of-use for clearing misfeeds, loading paper, and changing toner
- Advanced scanning capabilities include: Scan to Email, Scan to Mailbox, Scan to Home , Scan to Searchable PDF and optional Color Scanning
- Superior fax capabilities include: Network Server Fax enablement, Internet Fax enablement and Walkup Fax with LAN Fax
- 1.2 GHz Freescale multi-tasking controller
- Flexible desktop and network utilities via Xerox's CentreWare® Internet Service delivers exceptionally easy to use device monitoring
- Cutting edge security features include: Network Authentication, Secure Print, Image Overwrite, Fax Security, Device Access Password Protection, IP Filtering, Full Disk Encryption, Secure Device Administration with HTTPS (SSL), 802.1x Compliant and Disk Image Overwrite
- Xerox Extensible Interface Platform™ (EIP) allows document-related software applications to be accessed on the user interface to improve workflow and minimize time at the device
- Three different optional finishers to choose from that offer advanced finishing options such as stapling, hole punching, booklet making and folding
- Optional Envelope Kit provides trouble-free feeding of 50 envelope
- Monthly duty cycles of 400,000 pages and maximum paper capacity of 8,700 sheets
- Environmentally-friendly design offers low power consumption, low noise levels, two-sided printing, proof print, recycled paper, draft mode and is Energy Star and RoHS compliant

100% INDEPENDENT ANALYSIS

TABLE OF CONTENTS

BERTL Galaxy® Star Rating	3
About BERTL's Galaxy® Star Rating	3
Introduction	4
Pricing, Device Features Summary	4
Print	5
Network Print Features	5
Bandwidth	5
Print Productivity	5
Bandwidth	6
What We Liked/Would Like To See	6
Copy	7
Copy Productivity	8
What We Liked/Would Like To See	9
Scan	10
What We Would Like To See	11
Fax	12
What We Liked/Would Like To See	13
Image Quality	14
Density	14
Resolution	14
Halftones	14
Negative/Positive Lines	15
Negative/Positive Dots	15
What We Liked/Would Like To See	15
Ease of Use	16
Programming the Control Panel	16
Print Drivers	18
Routine Maintenance	22
Client Utilities and Device Management	25
What We Liked/Would Like To See	28
Media Handling	29
Media Input	29
Loading Media	29
Media Output and Finishing	31
What We Liked/Would Like to See	32
Summing Up	33
About BERTL	34

OFFICE



ABOUT BERTL'S GALAXY® STAR RATING

BERTL understands how difficult it is to choose one office-imaging device over another and exists to make this an easier choice for the consumer. That said, how does a consumer decide between two or more devices that carry the same BERTL 3-, 4- or 5-star rating?

Category-Criteria

Build Quality - An analysis of the construction quality of the major components that the user must interact with on a regular basis (e.g.: paper trays, access covers, supplies, etc.).

Network Administration - The quality of administrative and management utilities (both executable and Web-based) when compared to that of a sliding scale benchmark based on the network administration feature set of other vendors.

Security - A security feature-set analysis (removable hard disk, hard-disk overwrite, encryption, IP filtering, Microsoft Windows NT Authentication and LDAP lookup) when compared to a sliding scale benchmark based on the security feature set found on other devices.

Workflow - The quality of the network scanning, job submission, document management, sharpening and enhancement, file conversion and job layout tools based on a sliding scale benchmark when compared to the workflow tools employed by other devices.

Finishing - The productivity penalty (punch, staple, booklets) based on tests and finishing specifications and effectiveness based on a sliding scale benchmark when compared to that of other finishing systems found on other devices.

Ease of Use - Ease of maintenance (adding paper, toner, clearing misfeeds, cleaning) and ease of using the documentation, help, control panel, print drivers and client utilities when compared to a sliding scale benchmark based on the ease of use of other devices.

Media Handling - Throughput specifications and evaluations based on a sliding scale benchmark when compared with the handling of special media (e.g.: oversize, thick or coated stock) found on other devices.

Copying - Copy productivity based on tests and a feature-set analysis when compared to a sliding scale benchmark based on the feature set found on other devices.

Scanning - Simplex and duplex scan productivity and quality based on tests and a comparison of the overall scan and send feature set when compared to a sliding scale benchmark based on the feature set found on other devices.

Printing - Duplex and simplex print productivity based on tests and a printing feature set analysis when compared to a sliding scale benchmark based on the feature set found on other devices.

Image Quality - The quality of business color images (text, dot, line, halftone and solid quality) based on tests and a subjective rating on the quality of continuous tones (photos) when compared to a sliding scale benchmark based on the continuous tone quality produced by other devices.

Features - The feature set compared to a sliding scale benchmark based on the feature set found on other devices.

Price - MSRP of a system configured with network printing, copying and scanning.

In April 2010, Xerox Corporation introduced the new Xerox WorkCentre 5700 series. These versatile monochrome multifunction printers (MFPs) offer enhanced productivity, great ease-of-use and improved image quality for businesses of any size.

BERTL recently tested the Xerox WorkCentre 5790, which has a rated print speed of up to 90 ppm and maximum monthly print volume is 400,000 pages. The WorkCentre 5790 has flexible media capabilities with a maximum paper capacity of 8,700 pages, the ability to print on stock as heavy as 80 lb. cover (216 gsm) and paper sizes up to 11" x 17".

The new Xerox WorkCentre 5790 black-and-white multifunction printer is designed to be easy on the environment and offers the following features:

- Energy Star and RoHS compliant
- Oversized full-color LCD touch panel with intuitive graphical display
- High quality output with 1200 x 1200 dpi resolution
- Powerful 1.2 GHz Freescale CPU and 1 GB of system memory (includes 384 MB EPC and 640 MB ESS) and is expandable to 2 GB (includes 1 GB EPC and 1 GB ESS), as well an 80 GB hard disk drive for fast productivity
- The Print Around feature holds a job in need of resources such as a special paper size and prints the next job in the queue eliminating downtime
- Using the Xerox Standard Accounting software users can monitor not only the pages their office produces, but also who produced them. Users can manage access and gather data for print, copy, scan and fax output
- Job Based Accounting ensures accurate billing of device output to the correct department using one of several third-party billing solutions
- View job queues and check supply levels remotely with Xerox's embedded web page CentreWare®
- Users can send documents to multiple destinations with a single scan with Xerox SMARTsend software
- Users can fax directly from their desktop with the LAN Fax feature which saves time and paper
- Xerox Smart Kit technology predicts and prevents downtime by letting users know ahead of time when components need replacement preventing downtime
- Advanced security features include: Fax Security, Secure Print, 802.1x, HTTPS (SSL), SNMP V3, IPv6, IPsec, Network Authentication, Device Access Password Protection, IP Filtering, Audit Log, Disk Encryption, Disk Image Overwrite
- Superior finishing options including booklet making, stapling, hole punching and folding

This device is available in seven configurations and sold exclusively through Xerox authorized providers and direct marketing resellers in the United States, Canada and Latin America. Pricing for each model in the series is as follows:

- Xerox WorkCentre 5735 \$12,195
- Xerox WorkCentre 5740 \$13,025
- Xerox WorkCentre 5745 \$13,025
- Xerox WorkCentre 5755 \$21,700
- Xerox WorkCentre 5765 \$25,200
- Xerox WorkCentre 5775 \$29,750
- Xerox WorkCentre 5790 \$41,350

In the following test report, BERTL takes an in-depth look at the WorkCentre 5790, testing and evaluating its productivity, image quality and ease-of-use.

Xerox WorkCentre 5790 - Features Summary	
List Price	\$41,350
Imaging Technology	Laser
Standard Functions	Network Printing, Copying & Fax
Optional Functions	Scan
Maximum Monthly Duty Cycle	400,000 pages
Mono Print Speed	75 ppm
Mono First Page Out Time	2.7 seconds
Automatic Duplex	Yes
Network Scanning	Yes
Color Scanning	Yes
NT Authentication	Yes
LDAP Compatibility	Yes
Hard Disk Overwrite	Yes

PRINT PRODUCTIVITY

Evaluating print productivity is not as simple as timing copy jobs. The printing process involves several steps and can be affected by a variety of factors along the way.

The document must first be spooled by the print driver into a PCL or PostScript® file. The PCL or PostScript® file is then sent to the printer where it is raster image processed (Ripped) into image data by the device processor. The image data is then sent to the marking engine and output as printed pages.

It is possible to time and compare these factors through the use of careful preparation, conditioning and testing. Following are charts that show printing performance when tested under controlled conditions.

NETWORK PRINTING SYSTEMS

+ The Xerox WorkCentre 5790 delivers multiple Page Description Languages (PDLs) including the following: PCL 6/PCL 5e, PostScript 3 emulation, TIFF (6.0 Old JPEG and New JPEG), TIFF Fax Extended (TIFF-FX), PDF, LCDS, SCS, XES and IPDS through third party transforms.

+ All the drivers offer bidirectional communication with the device with its user-selectable interface for all of the Windows-based operating systems.

+ High print resolutions at 1200 dpi x 1200 dpi for enhanced image quality.

+ Driver supports the following OS's: Microsoft Windows, XP, Vista, Windows 7, Windows Server 2003, Windows Server 2008, Novell NetWare 5.x, 6.x and Open Enterprise Server, Mac OS 10.4, 10.5, 10.6, Solaris 8, 9, 10 SPARC, Solaris 10x86, HP UX 11iv2, IBM AIX 5 v5.3, Linux Fedora Core 1-9, RedHat Enterprise Linux 4 and openSUSE 10/11.

+ Supported Network Protocols include: TCP/IPv4/IPv6, LPR/LPD, Raw IP (Port 9100), NetBIOS SMB, IPX/SPX and Net BEUI, IPP and AppleTalk/EtherTalk.

+ Supports the following administrative protocols: DHCP, BOOTP, SNMP, WINS, Bonjour, DDNS, SLP v2, SSDP, HTTP/S, RARP, LDAP, SMTP and POP3.

+ Users can connect to the WorkCentre 5790 via Ethernet 10/100/1000 BaseT, IEEE802.5 (Token ring) [via third party adapter], Wireless Ethernet and USB print support.

+ Printing features include: Bi-directional Print Drivers provide device and job status, Embedded Web server for remote control/monitor/setup, Job monitoring at the device and at desktop, Special font, Banner Sheet, Rotate Image, Offset, Save and Save & Print, Paper Selection by attribute, Duplex (2-sided), Multiple stapling positions, Hole punch, Booklet creation, Fit to new paper size, Saddle stitch, Z-Fold / C-Fold, Output tray selections and Store and recall driver setting.

+ Imaging Printing features include: Light/Dark Toner saver, Resolution options (600 x 600 and 1200 x 1200 dpi), Reduction/Enlargement, Margins (edge to edge printing) and Invert Image.

+ Advanced Network Security protocols and features include: Protocols: HTTPS, IPsec, 802.1x and SNMPv3. Features: IP filtering, Unlimited Secure Print, Audit log, Image Overwrite and Data Encryption.

+ Fast productivity with the 1.2 GHz Freescale CPU and 1 GB of system memory (includes 384 MB EPC and 640 MB ESS) and is expandable to 2 GB (includes 1 GB EPC and 1 GB ESS).

+The Xerox WorkCentre 5790 comes standard with an 80 GB hard disk drive.

TESTING RESULTS

Print Productivity in Monochrome (seconds)			
# of Originals	Mode	PCL	PS
50	Simplex	90.8 ppm	86.0 ppm
50	Duplex	90.0 ppm	86.0 ppm

Monochrome print productivity is evaluated based on a text based letter sized 50 page PDF file.

Network-Bandwidth/Print File Sizes

	Native File Size	PCL6	PS
1-page Digital Photo PDF	4.48 MB	17.3 MB	5.64 MB
4 page Passport Form PDF	0.08 MB	704 KB	375 KB
16-page Magazine in PDF	1.78 MB	21.8 MB	3.31 MB
22-page Excel Worksheet	0.12 MB	4.98 MB	4.81 MB
32-page Text-Based PowerPoint	0.23 MB	6.01 MB	6.50 MB
32-page Graphic Intensive PowerPoint	4.20 MB	13.5 MB	13.9 MB
32-page Graphic PowerPoint Duplex	4.20 MB	13.5 MB	13.9 MB
38-page Form Word Document	0.91 MB	15.2 MB	6.96 MB
50-page Text-Based PDF	0.17 MB	2.02 MB	1.51 MB
50-page Text-Based PDF Duplex	0.17 MB	2.02 MB	1.51 MB

WHAT WE LIKED

- Tested simplex network-print speed with the PCL6 driver was as fast as 90.8 ppm, matching Xerox's rated speed of 90 ppm.
- Tested simplex network-print speed with the PostScript driver was as fast as 86.0ppm.
- Tested duplex network-printer productivity was very productive up to 90.8 ppm with the PCL6 driver.
- Tested duplex network-printer productivity was up to 86 ppm with the PostScript driver.
- Tested First-Page-Out-Time was 9.20 seconds with the PCL6 driver and 8.73 seconds with the PostScript driver.
- In BERTL's job stream test the PCL driver completed the stream job test in 3 minutes and 10 seconds, running at 81 ppm, which translates to an efficiency rate of 90%. Using the PostScript driver the efficiency rate was up to 84%.
- BERTL also ran large graphic prints and the WorkCentre 5790 still performed at 90 ppm demonstrate the device can handle any type of job.

WHAT WE WOULD LIKE TO SEE

- BERTL was satisfied with the Xerox WorkCentre 5790 MFP's printing capabilities.

Job List	Media Size	Mode	First Page Out Time (seconds)		Total Job Time (seconds)	
			PCL6	PS	PCL6	PS
1-page Digital photo print original	Letter	1:1	12.75	13.90	12.75	13.90
4-page Passport Form PDF	Letter	1:1	9.20	8.73	11.67	12.83
16-page Magazine PDF	Letter	1:1	10.91	10.92	21.37	21.41
22-page Excel Worksheet	Letter	1:1	22.02	14.32	36.50	31.93
32-page Text-Based PowerPoint	Letter	1:1	10.37	9.61	30.37	31.38
32-page Graphic Intensive PowerPoint	Letter	1:1	15.50	12.67	35.66	34.19
32-page Graphic PowerPoint (duplex)	Letter	1:2	15.23	16.67	35.41	36.84
38-page Form Word Document	Letter	1:1	10.48	12.27	36.06	47.31
50-page Text-Based PDF	Letter	1:1	9.50	12.42	41.72	46.41
50-page Text-Based PDF (duplex)	Letter	1:2	11.88	12.88	44.03	45.56

COPY PRODUCTIVITY

Advertised speeds are always quoted using the simplest route—in-and-out of a device. Of course, users often apply finishing options, incorporate different media sizes and types into the document, print in duplex, and add other elements that can affect speed. In the chart below, BERTL tests how different modes—mixed-size original mode and duplex mode—affect document-feeder productivity.

In order to assess copier productivity, BERTL ran a series of copy jobs in order to determine document-feeder scanning speed, the affect of the first set out on overall engine speed, and whether specific job attributes affect engine throughput capability. Each job was set up by feeding media from the shortest media route to the shortest available output destination. A separate test examines how adding finishing/output destinations affects productivity.

COPY FEATURES

+ The Xerox WorkCentre 5790 comes equipped with 384 MB of pre-collation memory (EPC) which is expandable to 1 GB.

+ The Xerox WorkCentre 5790 comes standard with a duplex automatic document handler (DADH) with capacity for up to 100-sheets.

+ Users can submit jobs that require single or duplex copying. The WorkCentre 5790 supports copy jobs that require 1:1, 1:2, 2:2 and 2:1 side printing.

+ Users can make copies that range from 1 to 9,999 in quantity and copy paper sizes from 5.5" x 8.5" up to 11" x 17".

+ Xerox's Rated Output Speed is up to 90 cpm in monochrome.

+ Xerox's Rated First-Copy-Out Time (FCOT) is as fast as 2.7 seconds using the platen glass.

+ Copy Resolution is set at input: 600 x 600 x 8 dpi; interpolated output: 4800 x 600 dpi.

+ The WorkCentre 5790 can simultaneously copy, fax and scan.

+ Users can use the variable zoom to scale from 25% to 400% in 1% increments.

+ Copy Features included with the WorkCentre 5790 incorporate the following: Collation, Automatic 2-Sided/Duplex, Auto Reduction and Enlargement to fit selected paper size, Auto Paper Select, Job Interrupt, and Auto Tray Switching. Options include: Hole Punching, Stapling, Booklet Creation (optional with High Volume Finisher), Post Process Inserter (optional with High Volume Finisher) and C/Z Folding (optional with High Volume Finisher).

+ Output copy features include the following: ID Card Copy, Booklet Creation, Inserts and Tab copying, Covers, Build Job, Annotation and Bates Stamping, Multi-up, Invert Image, Sample Set and Job Storage, Transparencies and Heavy weight paper.

+ Imaging Copy features include: Original Type Selections: Normal, Text, Halftone, Photo, Output Quality Selections: Lighter/Darker, Background Suppression, Contrast, Sharpness or Screening, Book Copying/Bound Copying, Edge Erase, Mixed Size Original and Image Shift.

+ Xerox Copier Assistant (XCA) is an accessibility option software that provides a PC-based alternative to the users interface touch screen. Used in conjunction with a customer-supplied PC attached via the USB port, this software supports text-to-speech, screen magnification, and easy PC keyboard access to basic and advanced copy features.

TESTING RESULTS

Automatic Document Feeder First Copy Out Time	
Time in Seconds	
Number of Originals	Monochrome Mode
1 Simplex Original	9.04
1 Duplex Original	11.94

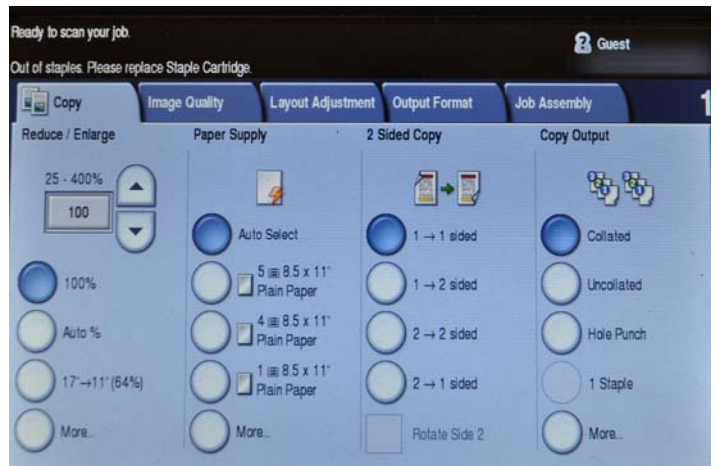
Platen Glass First Copy Out Time	
Time in Seconds	
Number of Originals	Monochrome Mode
1 Simplex Original	9.41

Copy Job Time			
# of originals	Monochrome Mode	Time In Seconds	CPM
10	1 sided to 1 sided	16.16	37.1
10	1 sided to 2 sided	18.29	32.8
10	2 sided to 1 sided	41.50	14.5
10	2 sided to 2 sided	43.22	13.9

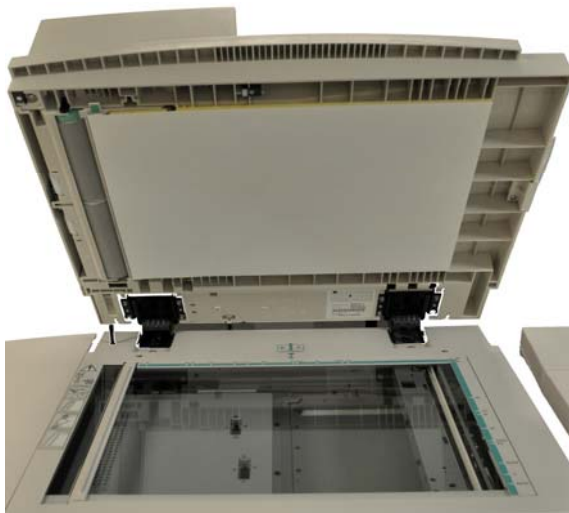


Copy Productivity (seconds)		
# of Originals	Mode	Monochrome
1	Simplex	88.5 cpm
1	Duplex	86.7 cpm

Copy productivity is evaluated based on a single text based letter file copied 50 times.



The "Copy" touch screen is clearly labeled and has all the most common copy settings.



Above and next column: The Xerox WorkCentre 5790 platen glass, duplex automatic document feeder (DADF) and manual feed tray.

Document Feeder Productivity

BERTL also takes the user into account and looks at how document-feeder productivity affects the amount of time a user has to wait at the device before they can walk away with their originals.

Document Feed Speed			
# of originals	Monochrome Mode	Time In Seconds	OPM*
11	Simplex Originals	11.13	53.9
6	Duplex Originals	38.75	7.7
11	Mixed Originals	16.75	35.8

*Originals per minute.

Document-Finishing Penalty				
# of originals	Finishing Selection	Time In Secs	1 Set Time (Secs)	Penalty Per Set (Secs)
10/5	Corner Staple	44.06	8.81	1.76
10/5	Side Staples	76.03	15.21	1.52
8/5	Saddle-Stitch Booklet	n/a	n/a	n/a

WHAT WE LIKED

- Copy touch screen is clearly labeled and easy to use.
- Tested copy First-Page-Out-Time was 9.41 seconds off the platen glass and 9.04 seconds using the automatic document feeder.
- Tested copier productivity was up to 88.5 cpm in simplex mode and up to 86.7 ppm in duplex mode, closely matching Xerox's rated copy speed of up to 90 ppm.
- Minimal document-finishing penalty when applying corner and side stapling.
- Fast document-feeder speeds of up to 53.9 OPM in monochrome simplex mode.

WHAT WE WOULD LIKE TO SEE

- BERTL was satisfied with the WorkCentre 5790's copying capabilities.

SCANNING

The Xerox WorkCentre 5790 offers many scanning capabilities to meet the needs of the most demanding customers. Users can store scanned documents directly on the device for reprints, while also retaining the flexibility to change document parameters before reprinting. The Scan-to-Email feature allows users to scan their documents to any email destination directly from the device. Network Scanning offers users with many scanning destinations which include: Scan-to-Home, Scan-to-Mailbox, Scan-to-File, etc. The Scan to Mailbox feature stores files on the device's hard drive, where they can be printed, deleted or retrieved at a user's desktop. Last but not least the Scan-to-Home allows scanning to pre-assigned home destinations such as an email address, network folder or FTP directory.

SCANNING SYSTEMS FEATURES

+ The WorkCentre 5790 can scan at up to 80 ipm in both monochrome and color using 8.5" x 11" LEF (A4/210 x 297 mm).

+ Users can scan while the system is copying, printing or transferring scan data to a network or faxing jobs.

+ This device offers several resolution options aimed at satisfying the most demanding customers. Options include the following:

- 600 x 600 dpi
- 400 x 400 dpi
- 300 x 300 dpi
- 200 x 200 dpi
- 100 x 100 dpi
- 72 x 72 dpi

+ The maximum scan area for the WorkCentre 5790 is 11" x 17" (A3/297 x 420 mm).

+ Xerox provides users with a multitude of file format options which include: TIFF 6.0 with G3 MH, G4 MMR, MRC or JPEG compression (single page or multiple pages), PDF (image only with G3 MH, G4 MMR, JPEG or JBIG2 compression), PDF/A, XPS, Searchable PDF, PDF/A and Searchable XPS.

+ The WorkCentre 5790 comes with the following scan presets: Archival Record (Normal Quality - Smallest file size) 100 x 100, For Sharing and Printing (Normal Quality - Small file size) 200 x 200, For High Quality Printing (High Quality - Large file size) 300 x 300, For OCR (High Quality - Large file size) 300 x 300, Simple Scan (Normal Quality - Small file size) 200 x 200.

+ Users can choose from the following image quality and file size settings: Normal Quality (Small file size), Higher Quality (Large file size) and Maximum Quality (Largest file size).

SCAN TO EMAIL (OPTIONAL)

+ The WorkCentre 5790 supports Scan to Email (manual address entry). Users can direct their document destination directly from the device.

+ Users can easily look up and search for a destination or e-mail address by accessing Exchange/Notes/LDAP address directly from the control panel.

+ Users can also use the public address book that can hold up to 128 recipients.

+ Supported network protocols include: SMTP and MIME encoded.

+ Scanning features include: Email signatures (6 lines each of 128 character max), email message body (user configurable), email CWIS confirmation sheet options.

NETWORK SCANNING

+ The WorkCentre 5790 supports a multitude of scan destinations making it easy for users to route their documents to most destinations. Xerox offers some of the most comprehensive workflow options in the industry.

+ Scan destinations on the WorkCentre 5790 include:

- Enables device-specific network scan workflows (destination templates) to be easily created and edited via CentreWare Internet Services
- Scan to Home displays one template and populates with the user's directory path after authentication
- Scan to file
- Scan to network server / directory
- Scan to Mailbox
- Scan to Folder on hard disk for device access to documents
- Scan to Windows XP client via Windows Image Acquisition (WIA) or TWAIN driver downloadable from www.xerox.com
- Color scanning (optional)

+ This device supports the most commonly used network protocols supported today. This includes Novell (NCP via IPX/SPX), FTP, Microsoft SMB via TCP/IP and HTTP/HTTPS.

+ Document Management Filed is available in Network Scan File templates. Features include:

- 1-6 user programmable metadata fields per network scan to file templates and unlimited fields within the template
- Metadata Fields consists of field name, display at the LUI or not, default value and other configurations, Customized fields viewed on user interface, variable data entered using virtual keyboard at device

+ Users can share scan templates among WorkCentre via device cloning, Scan template management with CentreWare® Internet Services and select confirmation sheet option.

+ Network scanning features include: Build job for Scan to File and Scan to Email, Duplex Scanning, Auto Detect Document Size, Scan Mixed Size Originals and Scan to Edge.

SCANNING SOFTWARE SOLUTIONS

+ Scan to PC Desktop Workgroup Edition SE is server-based software that provides document imaging, archiving, editing and organization tools which offers the following:

- Nuance® PaperPort Pro is an excellent software solution which is used for image viewing and file management.
- Nuance® OmniPage Pro Office (for desktop/client installation) is another software solution which is used to perform OCR and file format conversions of scanned documents.
- Image Retriever provides fully automated retrieval of scanned images direct from a scan enabled Xerox WorkCentre 5790 to individual desktops.

+ Scan to PC Desktop Workgroup Edition Professional offer all the same features as the SE version as well as the following:

- Complete PDF functionality
- Secure PDF workflow of all scanning applications

+ The optional Xerox SMARTsend is a server based document routing software that supports multiple scan-enabled multifunctional systems (up to 250 per server).

+ The optional Xerox SMARTsend Professional offers all services in the base package as well as:

- Workflow initiation via Paperware (Scan cover sheets)
- Server-based Optical Character Recognition (OCR)
- Adding Metadata
- Scan to Internet fax file destination

WHAT WE LIKED

- Optional Black-and-White or Color Network Scanning.
- Powerful and easy to use scanning solutions which include; Scan-to-Email, Scan-to-Mailbox, Scan-to-Folder, and Scan to Searchable PDF
- Supports the following file formats: TIFF 6.0 with G3 MH, G4 MMR, MRC or JPEG compression (single page or multiple pages), PDF (image only with G3 MH, G4 MMR, JPEG or JBIG2 compression), PDF/A, XPS, Searchable PDF, PDF/A and Searchable XPS.
- The Capture/Print, Save & Reprint feature lets users store scanned documents on the device for exact reprint later, while also retaining the flexibility to change document parameters before reprinting.
- The Xerox SMARTsend® scan, capture and distribution software option lets users route documents to multiple destinations.
- Nuance® PaperPort and OmniPage software makes it easier to manage scanned documents, view thumbnail images, link files and convert formats.

WHAT WE WOULD LIKE TO SEE

- BERTL was very satisfied with the WorkCentre 5790's network-scanning capabilities, features and functions.

FAX FEATURES

Users can add facsimile capability to their Xerox WorkCentre 5790 device with the optional Internet Fax and Network Fax Server, which offers advanced features such as one or two sided scanning, staple on/off, collate, etc.

Internet Fax Features	
Capability	Direct document transmission to remote Internet Fax machines or email clients (SMTP). Reception and automatic printout of documents sent via email from remote Internet Fax machines or email clients.
Maximum Scan Area	11 x 17 in. (A3/ 297 x 420 mm)
Address Directory Access	Corporate address list via LDAPv3, Downloaded address list (comma-separated file format), Internal LDAP or Public address book
File Formats	TIFF-FX profiles S, F with G3 MH or JPEG compression, PDF (image only) with G3 MH, G4 MMR or JPEG compression, PDF and Multi TIFF
Resolutions	600 x 600 dpi, 400 x 400 dpi, 300 x 300 dpi, 200 x 200 dpi, 200 x 100 dpi, 100 x 100 dpi, and 72 x 72 dpi
Network Protocols	SMTP and POP3
Compliance	ITU-T T.37 Compliant
Features	Signature (SA configurable –16 lines each of 128 character max) Delivery Confirmation: <ul style="list-style-type: none"> • Email receipt option • Confirmation reply option • Cover sheet option • Subject (248 characters) • User configurable message body

Network Fax Server Enablement Features	
Capability	Provides walk-up faxing and hard copy output of received faxes when integrated with fax server applications (fax server and software must be purchased separately from supplier). Transmission speeds, number of lines, compatibility, and compression are dependent on fax server configuration (via SMTP).
Maximum Scan Area	11 x 17 in. (A3/297 x 420 mm)
Network Protocols	Novell (NCP via IPX/SPX), FTP, Microsoft SMB via TCP/IP, HTTP/HTTPS and SMTP
Fax Send Features	One- or two-sided scanning (up to 11 x 17 in. (A3/297 x 420 mm)), Phone number entry, Add to send list, Delay send, Resolution selection and Image quality selection
Fax Print Features	One- or two-sided printing, Quantity, Staple on/off, Collate on/off, Secure print on/off and Finisher output tray selection
Supported Network Fax Vendors	Multiple vendors, certified by the Xerox Alliance Partner Program.

Walk Up Features	
Compatibility	ITU (CCITT) Group 3
Memory	256 MB (One Line and Two Line options)
Speed/Modems	1 or 2 V.34 modems: 33kbps. Less than 4 seconds per page transmission time, ISDN via third party adapter
Compression/Speed	MH/MR/MMR/JBIG/G3/Super G3
Fax Send Features	Quality/Resolution • Original type: Normal, text, half tone, photo, lighter/darker, background suppression • Fax – off Platen, mixed sizes or Bound/Book, Auto Send (Up to 5), Audio line monitor, Transmission options, (Report/Header), Reduce/Split large documents, Cover letter, Delayed send, Build Job (up to 1000 images) and Polling
Fax Receive Features	One- or two-sided printing, Stapled or unstapled, hole punch Receive print mode, Auto answer delay, Secure receive, Junk fax prevention, Fax Forward to Email and File
Fax Reports	Activity, Dial directory, Group directory, Options and Pending Jobs
Fax Mailboxes	Up to 100 password-protected: Poll Remote mailboxes (up to 255) password-protected
Auto Dialing Features	Speed Dials: • 200 (one-line option) • 1,000 (two-line option) Group Dials: • Up to 100 groups with up to 200 recipients per group (one-line option) • Up to 200 groups with up to 400 recipients per group (two-line option) Auto Redial: • Up to 14 attempts • 1 to 25 minute intervals • Batch send (up to memory capacity)
Resolutions	200 x 100 dpi (Standard), 200 x 200 dpi (Fine), 300 x 300 dpi, 200 x 400 dpi, 400 x 400 dpi, 400 x 600 dpi, and 600 x 600 dpi (Super Fine)

WHAT WE LIKED

- Users can fax directly from their desktop with the LAN Fax feature which saves time and paper.
- Secure device login with network user name and password to ensure confidential documents.
- Finishing features that include staple and collate.
- Junk fax prevention which saves paper.
- With fax forward to email feature, incoming faxes can be automatically routed to any valid email address, device folder or network folder to save paper and speed retrieval.

WHAT WE WOULD LIKE TO SEE

- BERTL was very satisfied with the WorkCentre 5790's fax capabilities, features and functions.

IMAGE QUALITY

BERTL evaluates the output of several “test targets” in order to determine image quality. Following are descriptions of key elements of image quality. Note the numbered examples on each of the test targets shown in the right column.

Office Color Image Quality

1. **Density of Solid Areas** - Better contrast; more vivid overall images
2. **Line Work** - Better production of lines and text
3. **Halftones** - Better production of photographic and screened images
4. **Negative/Positive** - Better production of fine detail

Photographic Color Image Quality

5. **Flesh tones** - Better production of portraits
6. **Banding** - Better solid and dithered fill
7. **Low Contrast** - Better production of dark images
8. **Saturation** - Better production of bright colors
9. **Caste** - Better color fidelity
10. **Fine Detail** - Better reproduction of fine details

Density of Solid Areas*		
	Copy Density	Print Density
Black	1.29	1.52

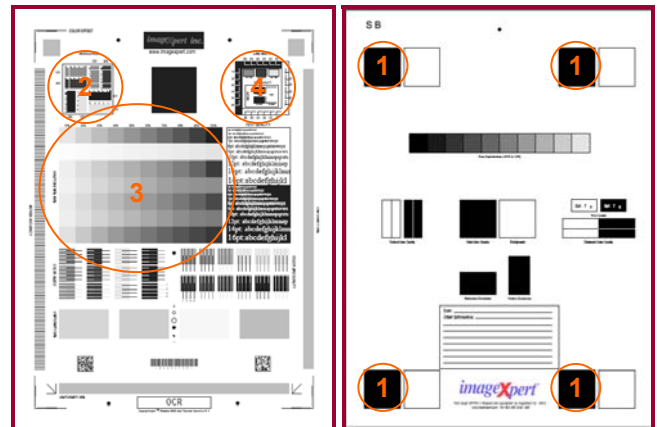
*Density is on a scale of 0 to 2.5, with 2.5 being the best possible.

Copy & Print Resolution*				
	Copy Resolution		Print Resolution	
	Vertical	Horizontal	Vertical	Horizontal
Black	4.0	4.0	3.0	3.0

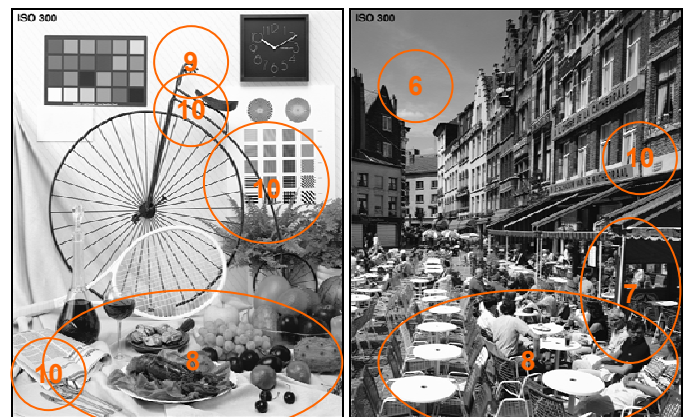
*Line Pairs per Millimeter. For copy resolution, higher is better (range, 2.0-8.0); for printer resolution, lower is better (range, 1.0-5.0).

Print Halftones		
	Min. Gradation*	Max. Gradation**
Black	10	100
Copy Halftones		
	Min. Gradation*	Max. Gradation**
Black	10	100

*Minimum gradation is on a scale of 10 – 100 percent in 10 percent increments. The best possible minimum gradation is 10 percent.
 **Maximum gradation is on a scale of 10 – 100 percent in 10 percent increments. The best possible maximum gradation is 100 percent.



BERTL uses ImageExpert printer test targets for the evaluation of printed image quality. BERTL technicians measure image density and evaluate the device's ability to produce a full range of halftones and various sizes of negative/positive text, dots and lines.



BERTL uses synthetic (photographic) test images obtained from ISO International Standard 12640--Graphic Technology--Prepress digital data exchange--CYMK Standard Color Image Data (CYMK/SCID) in order to evaluate the ability to print photographic images.

IMAGE QUALITY

Negative/Positive Lines*				
Line Width (points)	Negative		Positive	
	Vertical	Horizontal	Vertical	Horizontal
1	√	√	√	√
2	√	√	√	√
3	√	√	√	√
4	√	√	√	√
5	√	√	√	√
6	√	√	√	√

A "√" mark indicates the device was able to print the line width correctly.
 *Chart cells containing an "x" indicate that the printer was not able to print the line width correctly. Overall, the fewer "x's," the better the image quality. If no cells are marked with an "x," then the device was able to print all line widths correctly.

Negative/Positive Dots*	
Line Width (points)	% of Dots Printed
1 pixel Black	100
1 pixel Black Neg	100
2x2 pixel Black	100
2x2 pixel Black Neg	100
Checkerboard apparent?	No

*On a scale of 0 – 100%. The higher the percentage, the better.

WHAT WE LIKED

- High-Quality 1200 x 1200 dpi printing provides clear, crisp images, even on jobs with fine details.
- Great halftone reproduction in copier and printer modes when printing all grayscale shades.
- Great print and copy densities.
- Excellent print and copy resolutions.
- Output displayed great line control, printing all of BERTL's negative/positive test lines correctly.
- Excellent production of photographic images. Monochrome photographic images were rated "Above Average".
- Font quality was also rated "Above Average", as fonts were clean and crisp at 4 points.

WHAT WE WOULD LIKE TO SEE

- BERTL was very satisfied with the WorkCentre 5790's image quality. We would have liked to have seen less banding and saturation on some of BERTL's test files.

PROGRAMMING THE CONTROL PANEL

A control panel's ease of use—or lack of—can often have a significant effect on user productivity. The harder it is to select frequently used options such as duplexing, document finishing, etc., the more time the user has to spend programming the device and the less productive they are. Xerox's WorkCentre 5790's control panel has a large 8" color touch screen and hard keys. BERTL was extremely impressed with its animated step-by-step instructions for device management and error recovery.

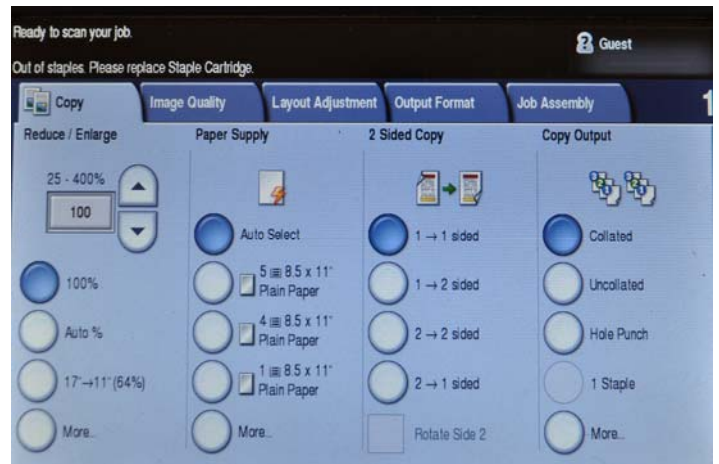


In the chart below, BERTL assesses how many steps are required to make these commonplace settings.

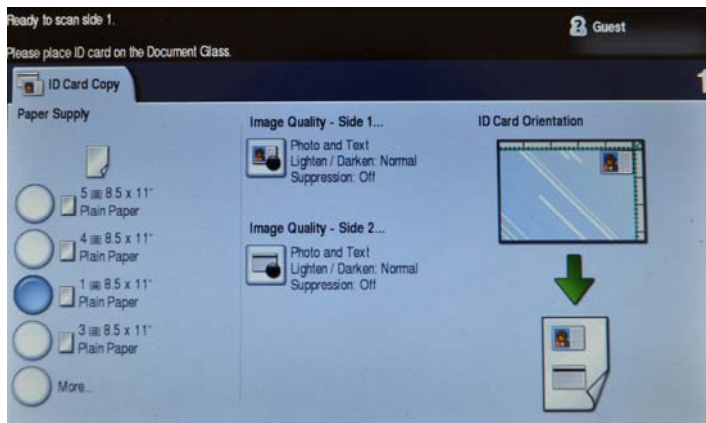
Selections Required for Frequently Used Copy Functions	
Photo Mode	1
Corner Staple	1
Reduce to 64%/78%	2
1:2	1
2:2	1
Front and Rear Covers	2



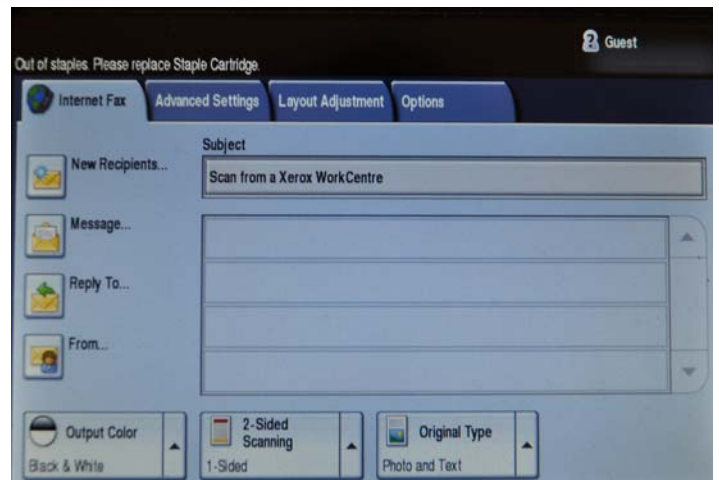
The touch screen's main menu provides users with functions that include; Copy, ID Card Copy, Server Fax, Internet Fax, E-mail and Workflow Scanning.



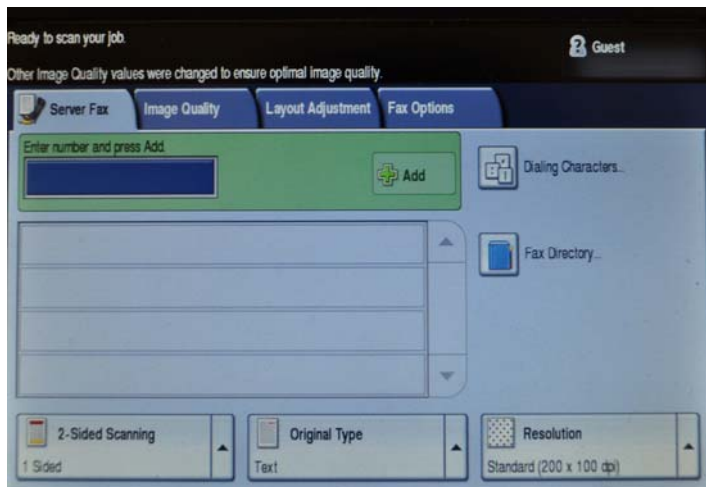
The Copy touch screen's main menu displays the most common copying choices. The blue highlighted buttons on the touch screen display currently selected settings.



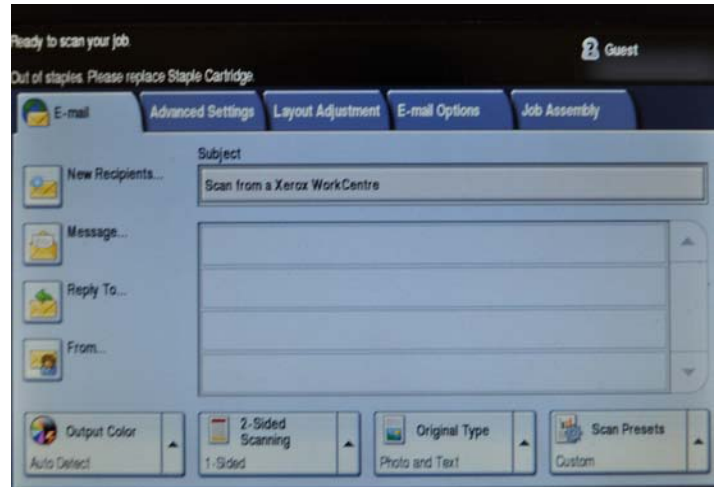
The ID Card Copy screen allows users to make copies of ID cards such as driver's license, insurance cards, etc. all on one single sided page.



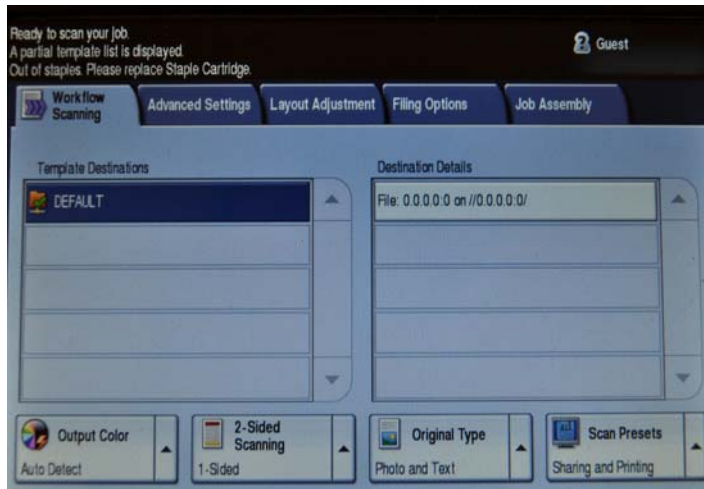
Users can send faxes from the desktop, over the Internet or via an existing fax server.



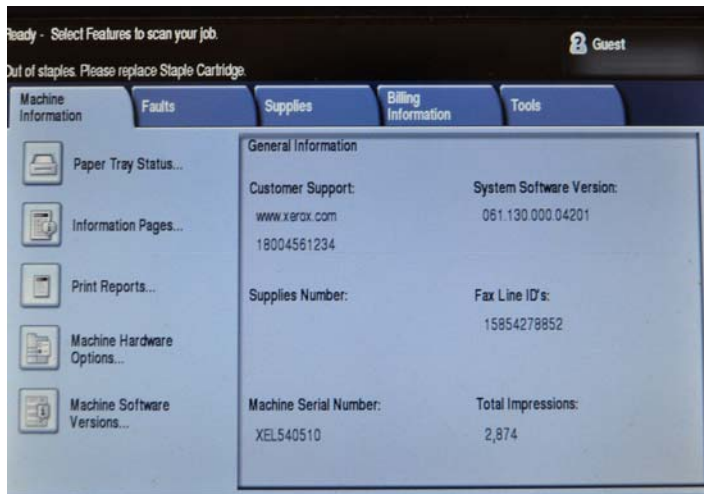
Users can send faxes straight from the device and utilize fax features that include: one- or two-sided printing, stapled or unstapled, hole punch, etc.



Scan to Email allows users to route files to email recipients directly from the control panel.



Users have many scanning options and features which include: scan to applications, web folders, URLs, PCs and mailboxes.



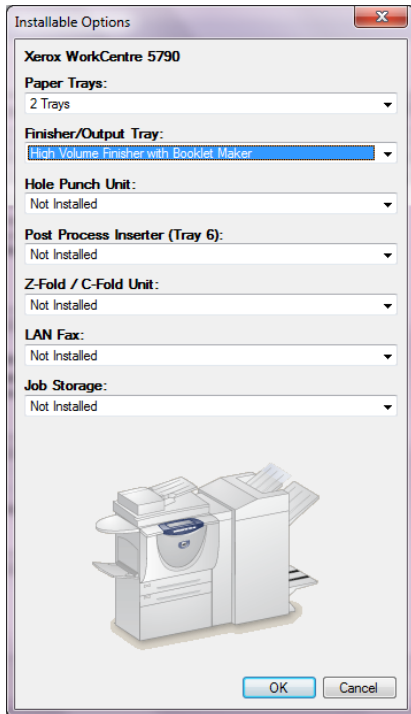
The Machine Information screen enables users to print configuration pages, guides, etc. Users can view billing information as well as check consumable status.

PCL AND POSTSCRIPT DRIVERS

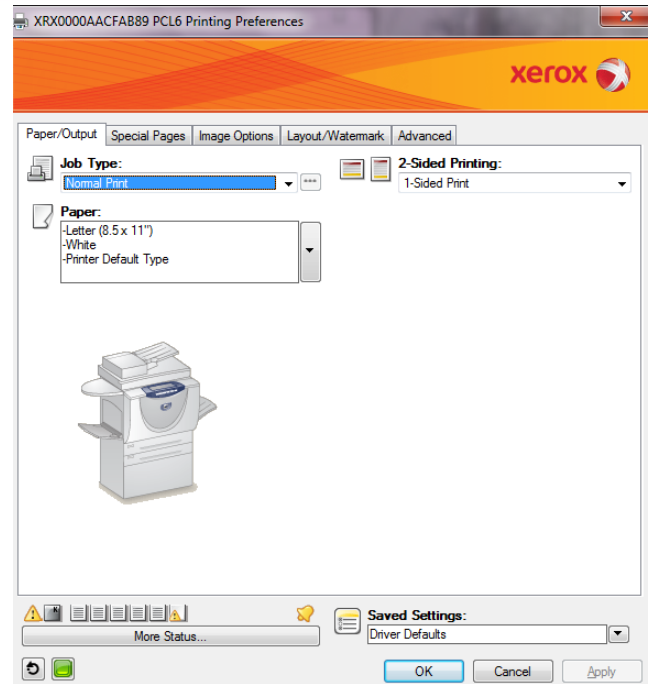
As with control panels and touch screens, print-driver design can vary enormously from manufacturer to manufacturer. Xerox has made it a simple process with their design of the PostScript and PCL drivers. The drivers are the same as other Xerox device drivers, which will make it especially easy for Xerox users to quickly acclimate to it. The WorkCentre 5790 also supports the Xerox Global Print Driver and Xerox Mobile Express Driver which can simplify installing, managing and supporting printers and MFPs on the network, and increase end-user productivity.

Print-Driver Checklist	
Do print-drivers have identical user interfaces?	Yes
Are print-drivers interfaces identical to other vendor models?	Yes
Bi-directional communication within print-drivers?	Yes
Auto device configuration from within printdriver?	Yes
Does print-driver installation require rebooting of the workstation?	No
Are print-driver deployment processes included?	Yes
Are print-driver deployment guidelines and procedures included?	Yes

PRINT-DRIVER DIALOGUE SCREENS



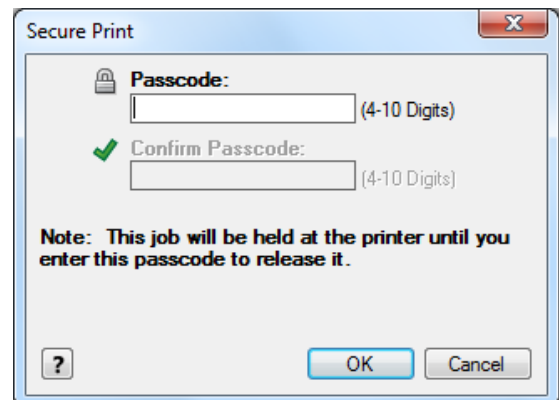
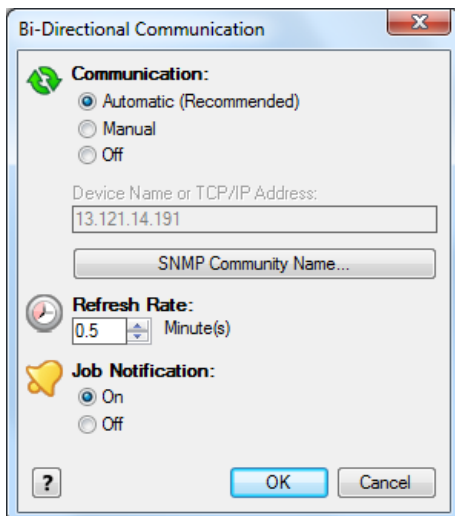
Above and below: In order to specify which options have been installed, as well as specify system defaults, administrators first access the “Printers and Faxes” folder via the Microsoft Windows Start menu, and then select either the WorkCentre 5790’s PCL or PostScript drivers. Administrators can “manually” specify which options are installed, or they may simply enable “Bi-Directional Communication” between the device and the driver automatically indicates that the options shown above are available for use.



The print-driver dialogue screen for both the PCL and PostScript drivers are virtually the same with some minor differences. The first tab on both the PCL and PostScript drivers is the Page/Output. This tab provides basic options such as job type, paper options and 2-sided printing. Users can always view the device consumable levels and check the status of the device by selecting the “More Status” bottom located on the lower left side.

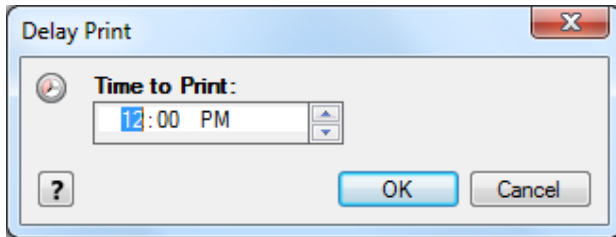
The “Job Type” drop-down menu on the top left has options for Normal Print, Secure Print, Sample Set, Delay Print, Store File in Folder, and Fax.

Normal Print: Prints the job immediately without requiring a pass code.

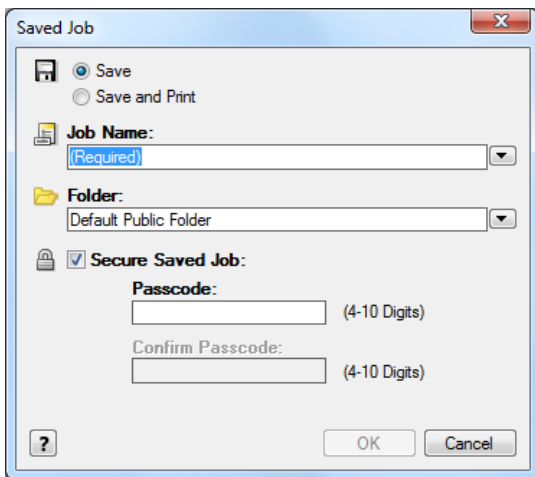


Secure Print: Prints the job only after the user enters their pass code at the printer’s control panel.

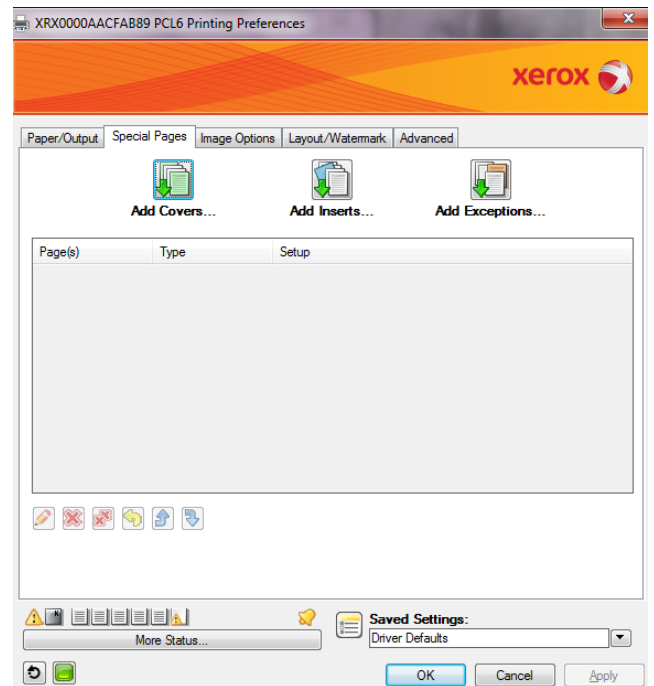
Sample Set: Prints one copy of the job as a sample and holds the remaining copies of the job at the printer until you release them from the printer's control panel.



Delay Print: Prints the job at the time specified by the user. When this job type is selected, the Delay Print dialog box appears so users can specify a time to print.

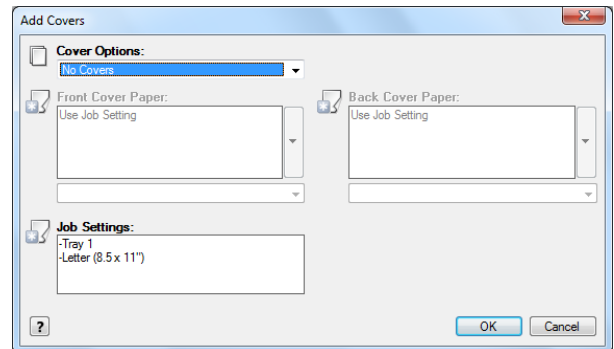


Saved Job: This feature stores the job on the printer's hard drive. Users can then print the job on demand from the printer's control panel or from CentreWare® Internet Services. When this job type is selected, the Store File in Folder dialog box appears so users can assign a job name, folder name and, if desired, enable secure saved job by providing a passcode with up to 20 digits.

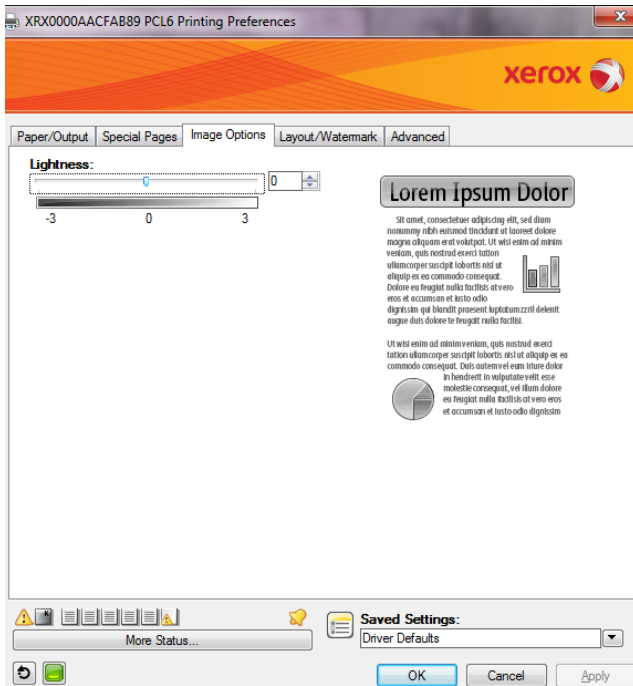


The Special Pages tab enables users to add, modify, or delete cover pages, inserts, or add exception pages.

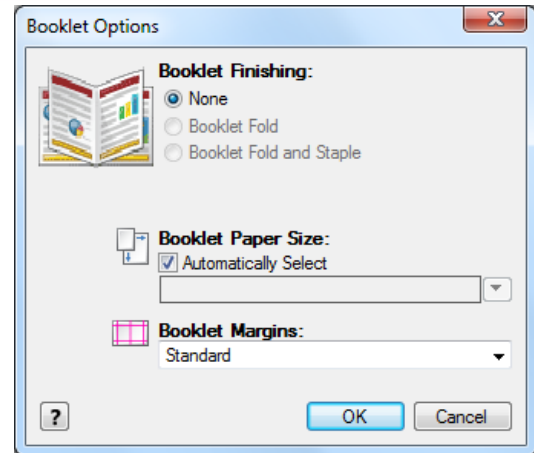
The center table in the dialogue screen provides a summary of the special pages set for the print job. Up to 250 inserts and up to 250 exception pages can be included in the table.



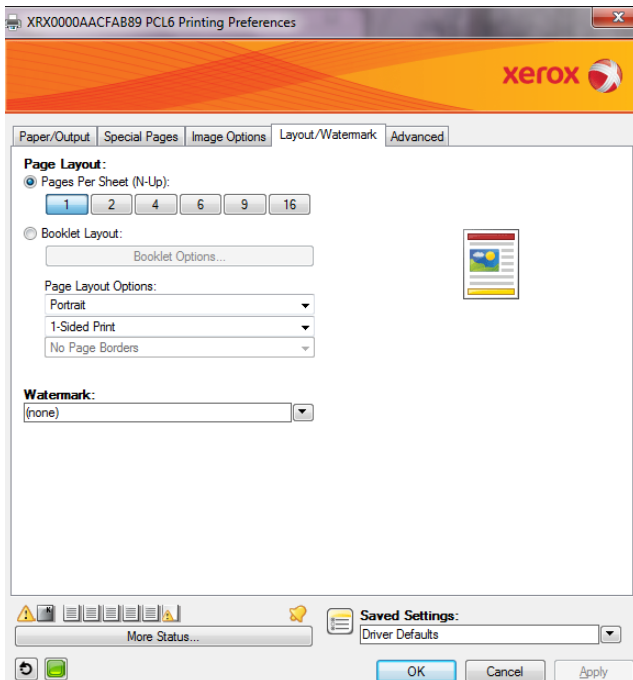
Users can create their own front and back cover sheets and select the type of paper they are printed on.



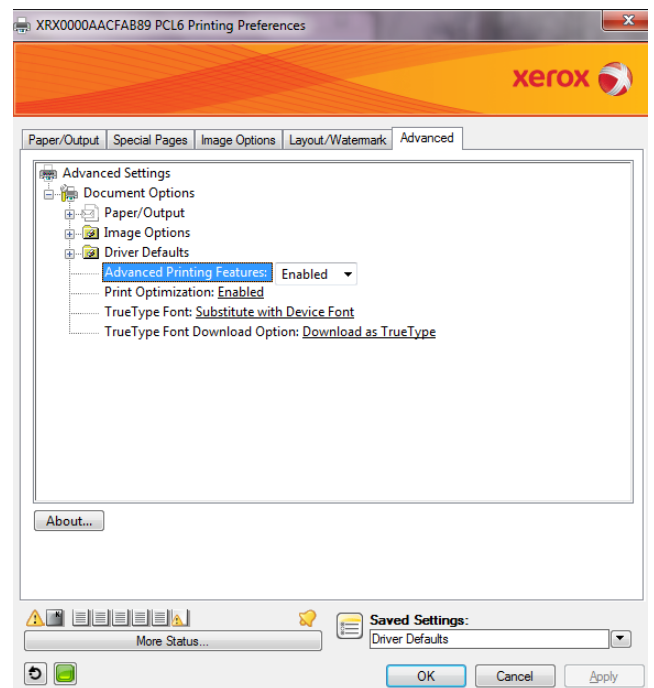
The Image Options tab allows users to adjust the lightness the document before printing.



With the Booklet Options, users can change paper sizes and are given the option of adjusting both the Gutter and Creep.

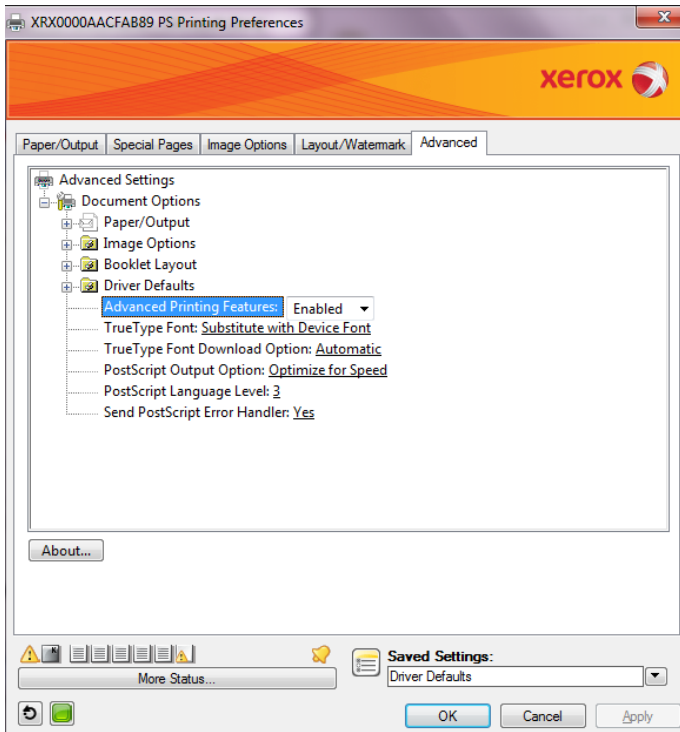


The Layout/Watermark tab contains some added options that insert effects to the print jobs such as Page Layout (N-up), Booklet Layout, and Watermarks.



Above and next page: The Advanced options tab provides users with the ability to select advanced printing options that are rarely changed. The PostScript driver has the added feature of booklet layout.

REPLACING TONER CARTRIDGES

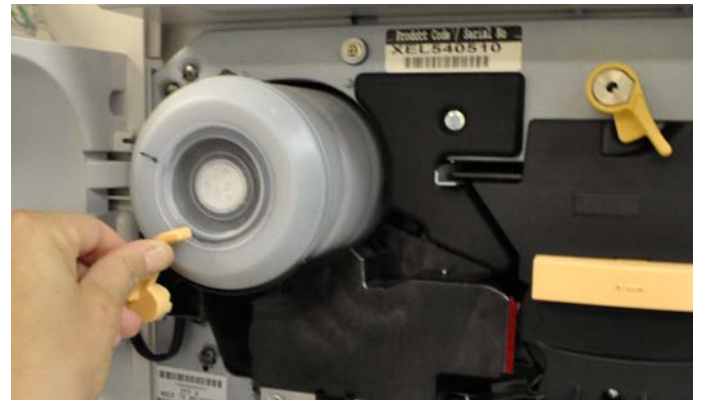


The WorkCentre 5790's consumables are accessible through the front panel by simply pulling this door open. Each consumable is released by pushing upward on the appropriate orange lever.

ROUTINE MAINTENANCE

The Xerox WorkCentre 5790 displays animated, step-by-step instructions for routine tasks, such as clearing paper misfeeds or replacing toner. BERTL found these animated screens very helpful when performing these routine maintenance tasks.

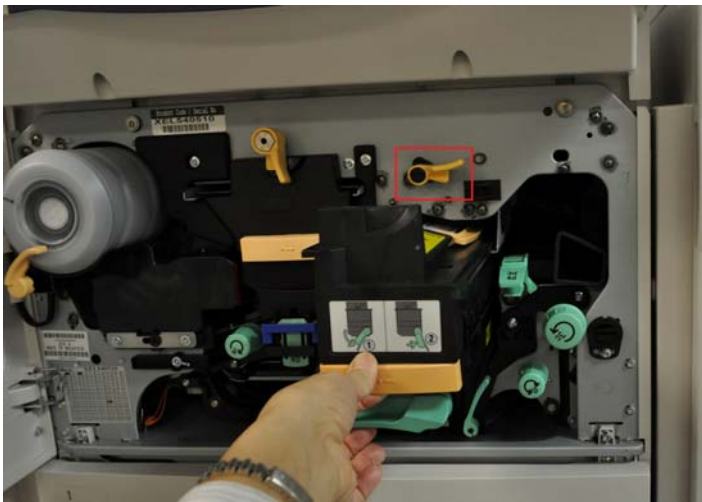
Maintenance Checklist	
Load ink/toner while running?	Yes
Requires rear access for maintenance items?	No
Requires side access for access to maintenance items?	No
All-in-one imaging units?	N/A
User-disposable waste item(s)?	Yes



Above and next page: Once the front door is open, the user can then replace the toner bottle by releasing the orange lever and sliding the unit out for replacement.



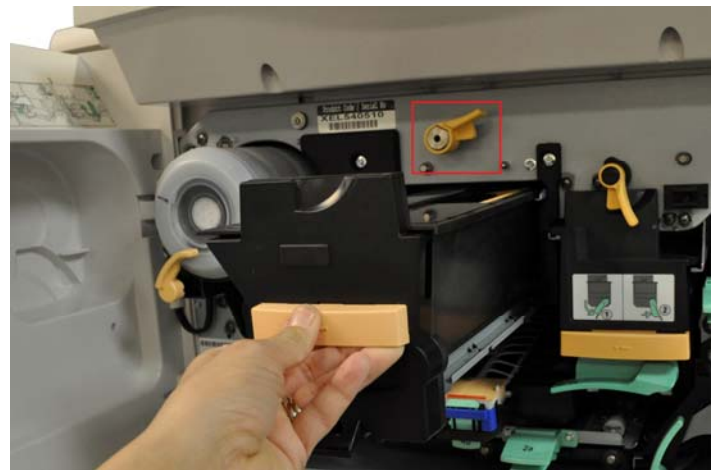
CHANGING THE FUSER UNIT



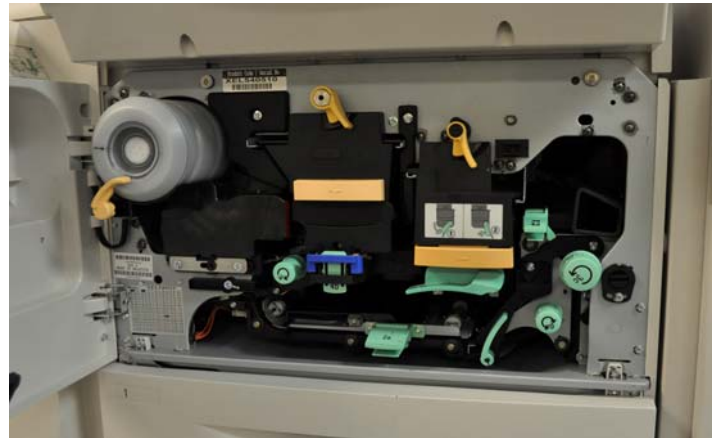
Above and next column: To replace the fuser unit, the user must first release the orange lever then slide out the unit for replacement.



CHANGING WASTE CONTAINER



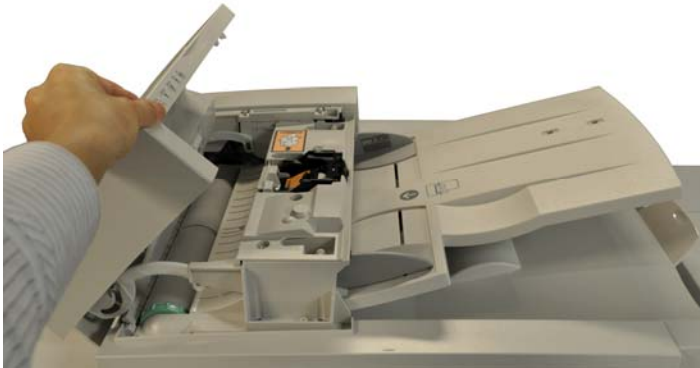
Above and next page: Periodically it is necessary to replace the WorkCentre 5790's waste container, to do so, the user must first release the orange lever then simply slide out the unit for replacement.



To access the front misfeed area, the user first opens the front door. Once open, the user can use the green dials and levers to clear any misfeeds.

MISFEED ACCESS

If a misfeed occurs on the WorkCentre 5790's, its location is indicated on the control panel, which displays the misfeed-access area.



Misfeeds that may occur in the duplex automatic document feeder can be accessed by lifting this cover.



When a finisher is attached all misfeeds can be cleared by opening the finisher door and following the instructions on the control panel or inside the panel door as shown above.



Above and below: The WorkCentre 5790 is equipped with a staple finisher and hole punch which users can easily replenish.

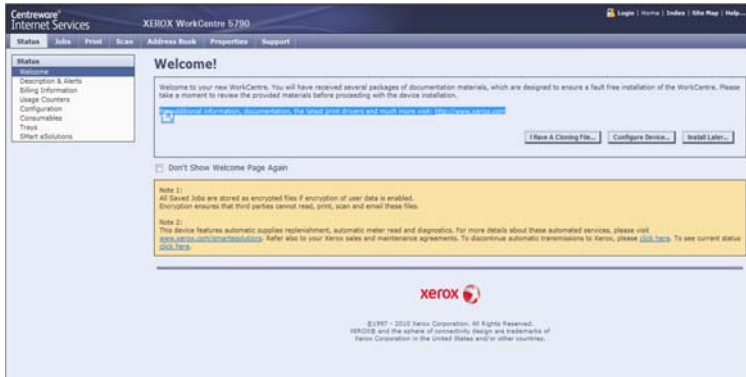


CLIENT UTILITIES AND DEVICE MANAGEMENT

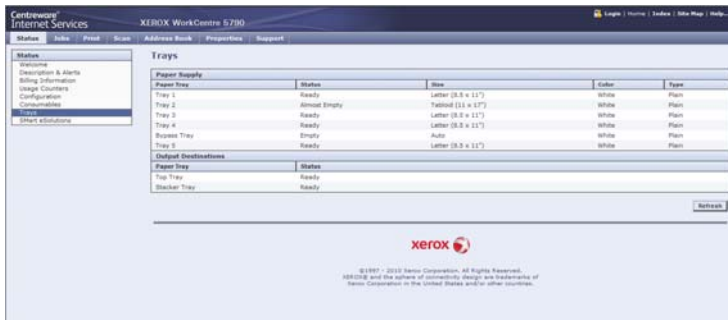
In order to take the best and most efficient advantage of a device and its capabilities, as well as ensure maximum uptime, clients need an efficient way to access and monitor the device. Xerox offers many features and options to help productivity for all users.

CentreWare® Internet Services – Integrated Device Web Page

Device Status	Web server embedded in SMart Controller: <ul style="list-style-type: none"> • Tray status/contents • Consumables status • Alerts
Job-Print Queue Viewing	Complete job print queue management
Job Submission	Print ready files PS, PCL (TIFF, PDF with Copier/Printer only), Output feature selection (2-sided, staple, fold, hole punch, paper select), Delivery options (Immediate, proof, delay and secure)
Device Administration	Allows simple, remote installation setting of configuration options and management of the device
Scan Template Management	Support 250 scan templates, Create device specific CentreWare® scan templates, select confirmation sheet options and share scan templates via device cloning
Browsers	Netscape 6.2, 7.x (Mozilla 1.x), Internet Explorer 5.5.x, 6.x, 7.x, Safari 1.x and Mozilla Firefox 1.x
Support	Online support available via web page



Xerox provides several solutions for monitoring the device and jobs. Among them is CentreWare® Internet Services, a web-based solution that enables clients to view device status, consumable levels, configurations, and enables administrators to manage and configure system and network settings.



With CentreWare® Internet Services, clients can view current device status and installed paper sizes, types, and status levels.



Users have the ability to log on to the CentreWare® Internet Services and submit a print job directly from the web interface.



Network administrators can easily configure TCP/IP network settings and protocols within CentreWare® Internet Services.



Administrators can configure the system so that specified users are automatically sent an e-mail message indicating that a specified status condition has occurred, such as toner is low. Administrators can also set up the system so that dealer service personnel are automatically sent an e-mail message indicating that a certain page count has been reached, and that the system requires service.



Smart eSolutions provide administrators with secure automatic meter reads and supply replenishment information. Administrators have the option of accessing this information directly from the device or via the web client interface.

Device Management Options	
Management Support	SNMP Version 1, SNMP Version 2c and SNMP Version 3, MIB access (IETF-MIBII RFC 1213), host resources, MIB RFC 2790, Printer MIB RFC v.2
Xerox CentreWare® Internet Services	Allows simple remote installation setting of configuration options and management of the device
Novell NDPS/NEPS	Server gateway application: centralized management tool
Xerox CentreWare® for Unicenter TNG	Provides added identification to the general discovery performed by Unicenter TNG and the ability to see the WorkCentre® under a Unicenter TNG Business Process View
Xerox CentreWare® for Tivoli Netware	Provides for the identification of WorkCentre® and Phaser® printers and multifunction printers in the general discovery performed by Tivoli NetView
Xerox CentreWare® Web	<ul style="list-style-type: none"> • Web-based server application for network administrators that permits web browser-based device management from any workstation, whether running Windows, UNIX or any other operating system: Works with any SNMP-managed printer from any manufacturer • Provides help with device discovery and installation, health checks and troubleshooting, and device upgrades, as well as basic accounting and asset management • Requires Windows XP, Vista, Server 2003, Server 2008 or Internet Explorer 6.0 and higher
Xerox CentreWare® for HP OpenView	<ul style="list-style-type: none"> • Provides for the identification of Xerox WorkCentre multifunction systems in the general discovery performed by HP Openview • Provides traps and message updates to the Open View alarm browser and the ability to launch CentreWare® Internet Services for device management directly from OpenView

Xerox Device Types for SAP R/3	<p>Simplifies printing in SAP R/3 environments by providing users of SAP R/3 3.x, 4.x, 4.5x, 4.6x, SAP Enterprise 4.7x, ERP applications with enhanced WorkCentre printing functionality (PostScript and PCL):</p> <ul style="list-style-type: none"> • One- to two-sided printing • Finishing provides single or dual stapling • Tray pull location from any tray • # of copies – provides the ability to print multiple copies • Print security via PIN ID capability • Job Based Accounting (JBA) – Provides capability to add JBA UserIDs to SAP print jobs • Printer banner sheet – Provides the ability to enable/disable printer banner sheets • Barcode printing – Xerox standard PostScript device types available at www.xeroxofficesapsolutions.com supports Intelligent Barcode Printing with Xerox Barcode Pro PS. This Barcode Pro PS can be purchased at www.font.net
Xerox SAP R/3 Intelligent Barcode Utility (Optional)	<p>Provides built-in process intelligence that allows the printing of barcodes on any appropriately configured PostScript printer on the SAP R/3 4.1x, 4.5x, 4.6x and within Latin-1 (ISO8859-1) SAP system code pages only. Used in conjunction with Xerox PostScript Device Types for SAP R/3 environment and Xerox Font Center Barcode Fonts. Utility enables automated checksum calculation, placement of start/stop characters, encoding of data string and data compression.</p>

WHAT WE LIKED

- The control panel's hard keys are large, well-organized and clearly labeled, while the touch screen features large text for easy viewing, as well as a simple design for easy navigation. The touch screen is virtually the same as those found on other Xerox devices', which will make it especially easy for Xerox users to quickly acclimate to it.
- The WorkCentre 5790's touch screen displays the most common and frequently used copier settings on the Copy screen. This enables copy users to quickly and easily make typical settings without having to navigate through sub-menus, and significantly reduces the time to make copy-job settings. BERTL was able to make frequently used copier settings in a matter of only 1 or 2 key presses. Some functions required up to 6 key presses (see "Selections Required for Frequently Used Copy Functions" chart on page 16).
- The Xerox Extensible Interface Platform (EIP) software platform found inside the WorkCentre 5790 device enables personalized solutions that users can access right from the device touch screen.
- For network and device management, Xerox provides users with the CentreWare® Web Software Suite. CentreWare® Internet Services provide an easy-to-use Web-based interface, and can be used to view detailed system and consumables' status. It also enables administrators to manage and configure device and network settings. This web-based solution enables administrators to monitor and manage a fleet of devices from any workstation on the network.
- Network-management and configuration of the Xerox WorkCentre 5790 can easily be handled via CentreWare® Internet Services Network Setup Utility. Administrators can clone multiple devices with settings obtained from one device.
- CentreWare® Internet Services provides automatic e-mail alerts when the system requires attention.
- Both PCL and PostScript drivers are relatively easy to use and logically organized. Both drivers have nearly the same exact user interface. This will enable users to quickly and easily switch between drivers and allow them to find the settings they need from one driver to another with ease.
- Both PCL and PostScript feature bi-directional communication, so that users can view device status directly within the print drivers.
- Driver support is delivered for: : Microsoft Windows, XP, Vista, Windows 7, Windows Server 2003, Windows Server 2008, Novell NetWare 5.x, 6.x and Open Enterprise Server, Mac OS 10.4, 10.5, 10.6, Solaris 8, 9, 10 SPARC, Solaris 10x86, HP UX 11iV2, IBM AIX 5 v5.3, Linux Fedora Core 1-9, RedHat Enterprise Linux 4 and openSUSE 10/11.

- Advanced scanning capabilities include: Advanced scanning capabilities include: Scan to Email, Scan to Mailbox, Scan to Home and Scan to Searchable PDF.
- Internet fax transmits faxes digitally via the internet with support for SMTP and POP3.
- Standard Network server fax enablement — allows faxes to be sent and received digitally over the network.
- Cutting edge security features include: Fax Security, Secure Print, 802.1x, HTTPS (SSL), SNMP V3, IPv6, IPsec, Network Authentication, Device Access Password Protection, IP Filtering, Audit Log, Disk Encryption, Disk Image Overwrite.
- Easy ID card-swipe solution with Xerox Secure Access Unified ID System™ provides quick access to functions that need to be secured or tracked within your current security infrastructure
- Control costs and access to copy, print, fax and scan functions with Xerox Standard Accounting.
- Users can get automatic meter reads with Xerox SMartSend software to ensure less downtime.

WHAT WE WOULD LIKE TO SEE

BERTL found that the WorkCentre 5790 was extremely easy to use and maintain on a daily basis.

MEDIA INPUT

The Xerox WorkCentre 5790 comes standard with two 500-sheet drawers, 3,600-sheet tandem drawer, and a 100-sheet bypass tray. For high-volume printing, a 4,000-sheet high capacity feeder option increases the total capacity to 8,700 sheets. A wide range of paper sizes and weights are supported which include sizes up to 11 x 17 inches and paper weights up to 80 lb. cover (216 gsm). Advanced finishing options are available on this device to fulfill any task. The Basic Office Finisher can staple up to 30 sheets while the Office Finisher can staple up to 50 sheets and supports optional hole punching. For more advanced finishing options users can choose the High Volume Finisher with an optional booklet maker.



The Xerox WorkCentre 5790 shown here is equipped with the following:

Standard: two 500-sheet paper drawers, a 3,600-sheet paper tandem drawer (trays 3 & 4) and a 100-sheet bypass tray.

Optional: 4,000-sheet High Capacity Feeder and the High Volume Finisher

Media Handling Checklist	
Minimum/Maximum Media Weight	
Duplex Automatic Document Handler	13 lb to 42 lb bond (50 to 160 gsm)
Four Front Loading Trays - Paper Trays 1 and 2	16 lb to 53 lb bond/110 lb index (60 to 200 gsm)
Bypass Tray	16 lb to 57 lb bond/80 lb cover (60 to 216 gsm)
High Capacity Tandem Tray	16 lb to 53 lb bond/110 lb index (60 to 200 gsm)
High Capacity Feeder	16 lb to 53 lb bond/110 lb index (60 to 200 gsm)
Offset Catch Tray	16 lb to 57 lb bond/80 lb cover (60 to 216 gsm)
Basic Office Finisher	16 lb to 57 lb bond/80 lb cover (60 to 216 gsm)
Office Finisher	16 lb to 57 lb bond/80 lb cover (60 to 216 gsm)
High Volume Finisher Option	16 lb to 57 lb bond/80 lb cover (60 to 216 gsm)
High Volume Finisher with Booklet Maker	16 lb to 57 lb bond/80 lb cover (60 to 216 gsm)
Z-Fold / C-Fold Unit with HVF with Booklet Maker	16 lb to 57 lb bond/80 lb cover (60 to 216 gsm)
Post Process Inserter	16 lb to 57 lb bond/80 lb cover (60 to 216 gsm)
Feeds maximum media weight from all sources?	No
Offset Stacker	No
Finisher	Yes
Hole Punch	Yes
Saddle Stitch	Yes

LOADING MEDIA

Paper Loading Checklist	
Maximum media weight from all media sources?	No
Drop-in loading of a full ream of paper?	Yes
Corner separators in paper trays?	No
Spring-loaded ramps in paper trays?	No
Geared media size side guides?	No
Captured rear media guide?	No
Automatic paper size detection?	Yes



The 100-sheet bypass tray can be adjusted by sliding these levers into place. The feeder can be adjusted for envelope printing.



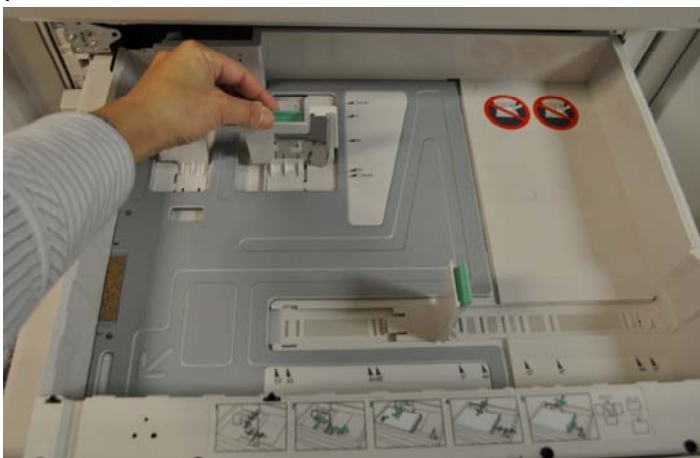
The 3,600-sheet paper tandem drawers can be adjusted to fit up to letter size papers. Users can also load paper while the device is still running, eliminating downtime.



Above and below: In order to adjust the 500-sheet paper drawers to accommodate different paper sizes, the user squeezes and slides these green guides into place. BERTL found it easy to adjust all the paper drawers.



The optional 4,000-sheet High Capacity Feeder supports letter sized paper only and expands the paper capacity to 8,700-sheets for longer uninterrupted jobs. Users can purchase the 11"x17" Short Edge Kit to support A3 paper.



MEDIA OUTPUT AND FINISHING

The Xerox WorkCentre 5790 offers three optional high-performance finishers that give documents a professional look and feel. Users can choose from the Basic Office Finisher, Office Finisher, or the High Volume Finisher with an optional booklet maker. All three models offer stapling and optional hole punching.

Basic Office Finisher	
Capacity	Top Tray – 250 sheets Stacking Tray – 1,000 sheets
Sizes	4.25 x 5.5 in. (A6/105 x 148 mm) to 11 x 17 in. (A3/297 x 420 mm)
Weights	16 lb to 57 lb bond/80 lb cover (60 to 216 gsm)
Stapling	30 sheets Single position (top left hand corner)

Office Finisher	
Capacity	Top Tray – 250 sheets Stacking Tray – 2,000 sheets
Sizes	4.25 x 5.5 in. (A6/105 x 148 mm) to 11 x 17 in. (A3/297 x 420 mm)
Weights	16 lb to 57 lb bond/80 lb cover (60 to 216 gsm)
Stapling	50 sheets Single (any corner) and dual
Hole Punch (optional)	3-hole punch 2-hole Legal punch

High Volume Finisher	
Capacity	Top Tray – 250 sheets Stacking Tray – 3,000 sheets
Sizes	4.25 x 5.5 in. (A6/105 x 148 mm) to 11 x 17 in. (A3/297 x 420 mm)
Weights	16 lb to 57 lb bond/80 lb cover (60 to 216 gsm)
Stapling	100 sheets Single (any corner), dual, front, rear, SEF and 4-stitch
Hole Punch (optional)	3-hole punch 2-hole Legal punch
With Booklet Maker	
Capacity	Tray stop up: 30 booklets (1-15 sheets per booklet) Tray stop down: Unlimited
Sizes	Letter – 8.5 x 11 in. (A4/210 x 297 mm), Legal – 8.5 x 14 in. (216 x 356 mm), Ledger – 11 x 17 in. (A3/297 x 420 mm)
Weights	16 lb to 57 lb bond/80 lb cover (60 to 216 gsm)
Stapling	Saddle-stitch (2-15 sheets / 8-60 page booklet)
Folding	V-folding (1-15 sheets / unstapled)

Z-Fold / C-Fold Unit	
Capacity	50 sheets or unlimited capacity with tray stop in the down position
Sizes	Letter – 8.5 x 11 in. (A4/210 x 297 mm)
Weights	16 lb to 57 lb bond/80 lb cover (60 to 216 gsm)

Only available with the High Volume Finisher with Booklet Maker.

Post Inserter	
Capacity	250 sheets
Sizes	Letter – 8.5 x 11 in. (A4/210 x 297 mm), Legal – 8.5 x 14 in. (216 x 356 mm), Ledger – 11 x 17 in. (A3/297 x 420 mm)
Weights	16 lb to 57 lb bond/80 lb cover (60 to 216 gsm)

Only available with the High Volume Finisher with Booklet Maker.

WHAT WE LIKED

- 100-sheet bypass tray is easily adjusted to accommodate different paper sizes including envelopes.
- Easy to adjust and fill paper drawers
- Paper capacity can be expanded to a substantial 8,700 sheets with the High Capacity Feeder.
- Versatile media handling and flexibility, with the ability to print on stock as heavy as 80 lb. cover (216 gsm) and paper sizes up to 11"x17".
- Advanced finishing options that include; booklet-making, stapling, hole punching and z-fold.
- Output bin (when the High Volume Finisher is installed) can hold up to 3,250 sheets for large jobs.

WHAT WE WOULD LIKE TO SEE

- BERTL was very satisfied with the WorkCentre 5790's paper-handling capabilities.

Xerox has done an excellent job with the design of the WorkCentre 5790. This monochrome, laser-based MFP designed for large workgroups performed exceptionally well and demonstrates fast productivity, superb ease-of-use, advanced workflow solutions, and security features. BERTL observed the following when testing the Xerox WorkCentre 5790:

- Tested simplex network-print speed with the PCL6 driver was as fast as 90.8 ppm, matching Xerox's rated speed of 90 ppm.
- Tested simplex network-print speed with the PostScript driver was as fast as 86.0ppm.
- Tested duplex network-printer productivity was very productive up to 90.8 ppm with the PCL6 driver.
- In BERTL's job stream test the PCL driver completed the stream job test in 3 minutes and 10 seconds, running at 81 ppm, which translates to an efficiency rate of 90%. Using the PostScript driver the efficiency rate was up to 84%.
- Tested copier productivity was up to 88.5 cpm in simplex mode and up to 86.7 ppm in duplex mode, closely matching Xerox's rated copy speed of up to 90 ppm.
- The large, 8-inch, full-color, touch screen control panel makes walk-up operation easy to program jobs in seconds.
- Ease of maintenance is effortless, front loading toner cartridge, easy misfeed access, and paper tray loading.
- PCL and PostScript drivers feature bi-directional communication, so that users can view device status from the print-drivers.
- Various scan to functions let users share information at the touch of a button. These include: Scan to Email, Scan to Mailbox, Scan to Home and Scan to Searchable PDF.
- Xerox's CentreWare® Internet Services, which provides detailed device and consumables' status, network configuration, access management and accounting controls for administrators, is easy to use and very capable.
- Xerox Extensible Interface Platform (EIP) enables enterprises and developers to develop custom applications, accessible from the touch screen, that can automate and streamline frequent workflows, such as scan-and-distribute.
- Security features include: Network Authentication, Secure Print, Image Overwrite, Fax Security, Device Access Password Protection, IP Filtering, Full Disk Encryption, Secure Device Administration with HTTPS (SSL), 802.1x Compliant and Disk Image Overwrite make this device stand out from the competition.
- Versatile media handling and flexibility, with the ability to print on stock as heavy as 80 lb. cover (216 gsm) and paper sizes up to 11x17".
- Ability to expand paper capacity to up to 8,700 sheets.
- Duty Cycle up to 400,000 pages per month.
- Advanced finishing options that include: booklet making, stapling, hole-punching and folding.
- The Xerox WorkCentre 5790 has superior energy features which include fast warm-up, first copy out times, duplex and combine copy modes, low power consumption, low noise levels and is Energy Star compliant.
- Managers will appreciate Xerox's support services, the WorkCentre 5790's ease of use and maintenance, support and training, job tracking/accounting capabilities; and the ease of device monitoring.

Considering the Xerox WorkCentre 5790's excellent overall performance in testing, ease of use, and monochrome image quality, BERTL awards the Xerox WorkCentre 5790 its Four and a half star *Outstanding* rating and highly recommends this device for large offices that require a reliable and fully functional monochrome multifunction printer.

OFFICE

About BERTL

The success of an organization depends on its ability to manage its information and assets. An effective workflow process requires the complex integration of information, devices, software and people.

IT managers, office managers, and other knowledge-management professionals need to know what digital imaging devices would best serve their specialized workflow processes.

BERTL's services are designed around this real-world framework, delivering business consumers the independent analysis and insight needed to make critical decisions about digital imaging's role in their organization.

Independent Analysis and Insight

BERTL's reports, comparative data, and strategic guides look at digital imaging through the eyes of the business user. The research examines not only the technical features, but also vertical market applications, and business benefits. The impact on worker productivity is a primary concern.

BERTL is 100% independent. Business users worldwide trust BERTL for objective, unbiased analysis of digital imaging systems.

BERTL Services

Reports and Star Ratings

BERTL analysts provide detailed reports on the technical and practical benefits of thousands of color and monochrome workgroup, office, graphic arts, and production devices.

Product Specifications

DataCheck Gen II provides the most current competitive data on printers, copiers, MFPs, fax devices, wide format printers, scanners, and more.

News, Interviews, and Analysis

The ITchat online magazine provides insight into the dynamics and trends of the digital imaging marketplace through interviews, feature articles, and software reviews.

BERTL Awards

BERTL analysts recognize the leading devices and software solutions in the annual BERTL's Best awards. BERTL also honors the performance of manufacturers in the annual Readers' Choice selections.

Contact BERTL

BERTL Inc.
363 Route 46 West, Suite 100
Fairfield, NJ 07004
Phone: 1-973-882-0200
Fax: 1-973-882-0201
Email: info@bertl.com
www.BERTL.com