

CopyCentre®
232/238/245/255

WorkCentre®
232/238/245/255

WorkCentre®Pro
232/238/245/255

XEROX®

Technology | Document Management | Consulting Services

copy | print | scan | fax | email

Experience the power of digital innovation



Maximum agility, exceptional performance

Exceed all the document handling needs of your small-to-medium workgroup – with one flexible device.



WorkCentre Pro 255 shown with Professional Finisher and convenience stapler

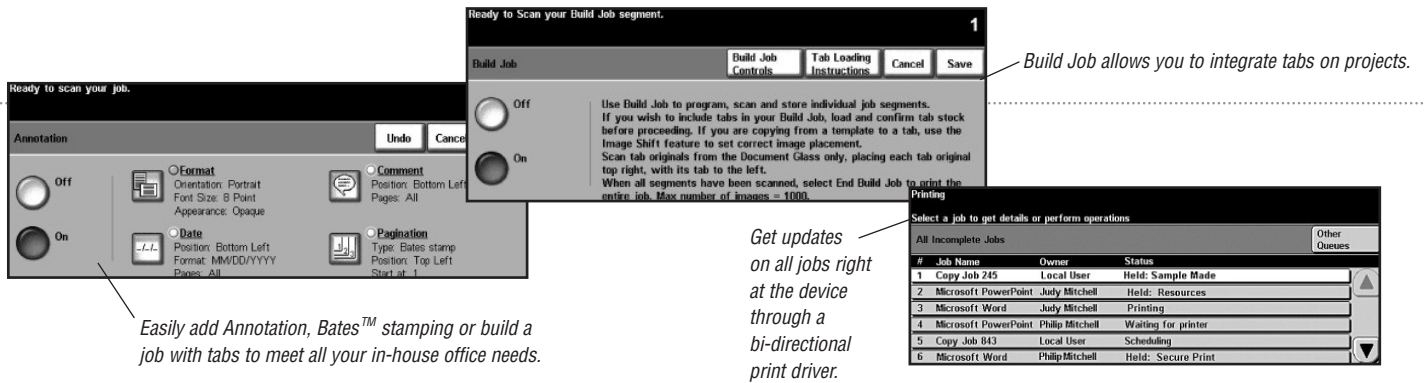
Engineered to perform

Uncompromised performance. Plenty of power. Robust, smart features designed for results-oriented offices. See how easy it is to meet all your deadlines with professional-looking output on every job. That's the Xerox advantage.

- Copy/Print/Scan/Fax up to 55 ppm – fast enough to accommodate busy workgroups.
- The powerful 1.4 GHz SMart™ Network Controller quickly accepts documents from the network, concurrently processes all jobs received, and keeps the paper path full to avoid delays between jobs.

- Perform multiple tasks simultaneously. You can always access the function you need, when you need it. Copy, print, fax or scan even while other jobs are running.
- SMart Job processing eliminates “bottlenecks” using queue management, intuitive bi-directional print drivers, simple web job submission, and our exclusive Print-Around feature that holds any job needing resources and prints the next job in the queue.





Productivity-boosting features

Simplicity is key when it comes to professional-looking output. Xerox makes it easy to meet all your office needs in-house, with time-saving, versatile systems that are also simple to use.

- Small scan file sizes make printing and distributing documents network-friendly and help increase your network and print productivity.
- Advanced features include annotation, Bates™ stamping, tab print and copy capability, and page-level programming from the print driver.
- The robust Build Job function enables page level programming for different pages in a document, including tabs, and then lets you select and proof individual sections as the job is built.
- Bi-directional communication provides updates on all your print jobs from the device, your desktop, or even over the Internet. System alerts immediately notify you of any problems – and how to fix them.
- Powerful finishing capabilities let you collate, fold and assemble professional looking documents in-house.

Maximum productivity from start to finish

Save time and money with finishing options that deliver everything from typical office tasks up to professional-quality output. Choose basic features like staple and hole punch – or advanced capabilities that include tab copy/print, booklet making and v-fold. Page-level programming through the print driver lets you control it all from your PC.



Sort and collate



Multiposition stapling – Custom position and placement to enhance usability



Hole punch – Options meet worldwide conventions



Booklet – Saddle stitch booklets (up to A3) in-house to reduce costs and eliminate delays



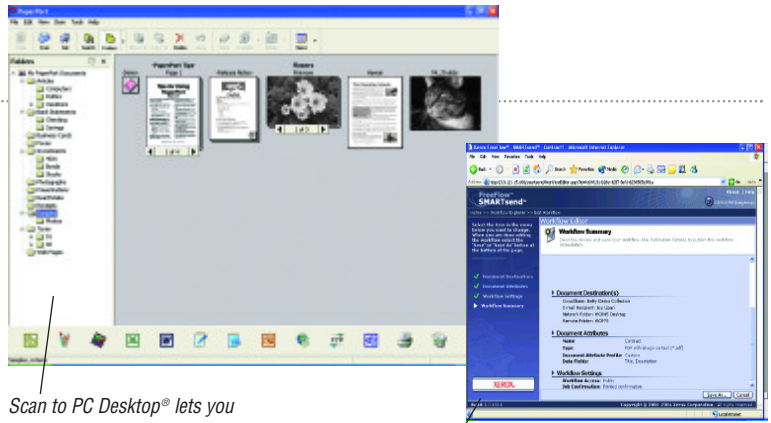
Folding – V-fold brochures up to A3 are printed and ready for distribution



Easy and efficient operation

WorkCentre and WorkCentre Pro systems come standard with advanced device management software that helps you manage your network devices with ease.

- CentreWare® Web software manages entire enterprise-wide print environments regardless of manufacturer. Keep closer tabs on your system to ensure everything runs smoothly and reliably.
- CentreWare® Internet Services software makes it easy to remotely set up, monitor and manage your Xerox device from any workstation. You can even submit jobs over the web!
- Xerox Standard Accounting software provides job-based accounting features for greater cost control of printing, copying, faxing and scanning.
- Innovative reliability features predict when components need replacing, helping prevent costly downtime. Easy to replace SMart Kit™ components offer the convenience of instant device availability.
- SMart eSolutions offers hands-free, hassle-free, secure administration of Xerox devices for automatic meter reads.
- Desktop management software integrates scanned information, making it easy to edit, organise and archive documents digitally.
- The WorkCentre and WorkCentre Pro 232/238/245/255 products have received the Common Criteria Certification from the National Information Assurance Partnership. The enhanced features have been submitted for re-certification. Their robust security features let you restrict access, manage usage and ensure confidentiality.

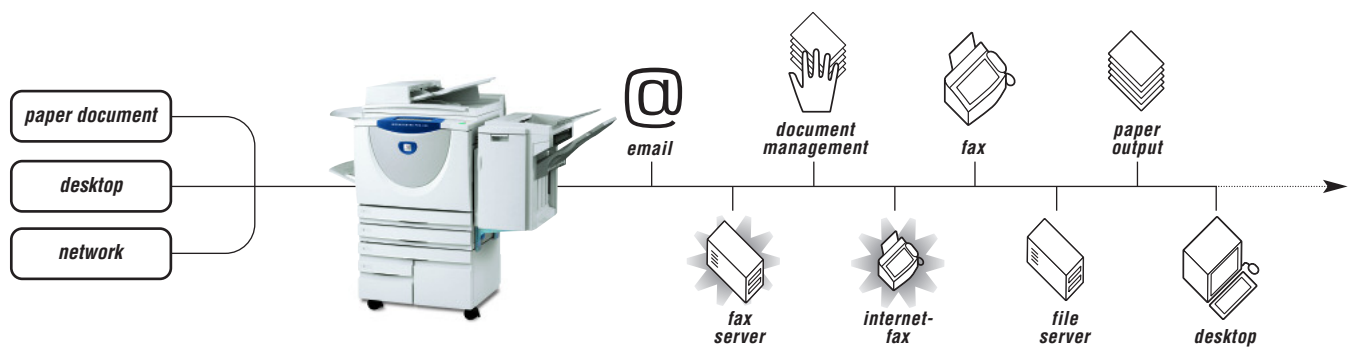


Scan to PC Desktop® lets you move documents into word processing, spreadsheets and database applications for editing, merging, distribution and storage... saving time, effort and money.

Use FreeFlow™ SMARTsend™ software and your multifunction system to scan paper documents into digital form and distribute them to multiple destinations in a single scan.

A range of software solutions enable you to share and store documents faster and easier than ever before.

- Exclusive SMARTsend™ scanning software option lets you send documents to multiple destinations – email, folders, or other devices – from a single scan, using a pre-set workflow. LDAP capability can even integrate your network address book.
- Xerox Extensible Interface Platform™ (EIP) provides a versatile development platform for system integrators and Xerox Alliance Partners. With EIP they can create custom applications to improve the user experience and minimise time spent at the device.
- The Xerox SecureAccess® option gives you an integrated, secure and convenient method of accessing your multifunction system: a simple swipe of an ID card. SecureAccess also provides Follow-You™ printing, allowing you to release print jobs at any SecureAccess-enabled device.
- An array of Xerox Alliance Partner solutions extends the value of your WorkCentre Pro even further with advanced accounting, faxing and scanning capabilities.



Go from paper to digital to anywhere

Transform paper to digital files, then distribute them anywhere – in any format. Or just store them on the network for your next big meeting. It's up to you.

The **heartbeat** of your office

Today's non-stop workplace requires superior software and exceptional performance. Whether you need a copier, a basic copier-printer or a total, advanced office solution – Xerox has the answer. Helping you work smarter, not harder...with user-friendly features that can perform multiple tasks simultaneously. Plus a host of value-added functions that make it the core of your office communications.

CopyCentre® 232/238/245/255

copier



A hardworking A3 copier that boosts productivity with ease

It's versatile. It's reliable. And it's easy to operate. This digital copier delivers high-quality output with every job, and also offers flexible finishing options.

- Fast warm-up and first-copy-out time get you working in seconds.
- Powerful Build Job capabilities simplify complex document creation.
- Optional two-line fax lets you send and receive at the same time.
- Affordable output options include 1,000-sheet and 2,000-sheet finishing, hole punch, booklet-making, v-fold and convenience stapling.
- Upgradeable so you can add multifunction capabilities as your needs grow.

WorkCentre® 232/238/245/255

copier-printer



Exceptional copier-printer capability and performance

To enhance the functionality of already powerful walk-up features, choose WorkCentre. This device adds network printing to your capabilities ... so you can take advantage of effortless copying and printing to get more work done.

- New SMart Network Controller for powerful, efficient printing.
- Unparalleled multifunction power lets you perform any number of jobs using all functions at once – RIP, receive/send, programme ahead, job queue processing and transmit.
- Xerox Standard Accounting tracks Copy, Fax, Print and Scan jobs.
- Optional walk-up fax with LAN fax and/or scan-to-email for the essential multifunction capabilities.
- Upgradeable to WorkCentre Pro.

WorkCentre® Pro 232/238/245/255

advanced multifunction system



Enterprise-friendly advanced functionality

Scan, fax, print, copy ... here's the all-in-one, value-packed solution. WorkCentre Pro is the most advanced multifunction system offering an array of document management options. Plus, you can add partner solution software to further leverage your investment. It's the sensible solution to all your business needs.

- Extensive fax capabilities – options include walkup fax with LAN fax, Internet fax or Network Server Fax.
- Multiple scanning software options – FreeFlow™ Scan to PC Desktop® and FreeFlow™ SMARTsend™.
- Advanced fax, scanning and network accounting solutions from Xerox Alliance Partners.



Call today. For more information, call **00 800 9000 9090** or visit us at www.xerox.com/office

Configurations	CopyCentre 232 / 238 / 245 / 255	WorkCentre 232 / 238 / 245 / 255	WorkCentre Pro 232 / 238 / 245 / 255
Speed	Up to 32 / 38 / 45 / 55 ppm		Up to 32 / 38 / 45 / 55 ppm
Duty Cycle	232: up to 125,000 pages/mo.; 238: up to 150,000 pages/mo.;		245: up to 175,000 pages/mo.; 255: up to 200,000 pages/mo.
Device Memory	128 MB std / 768 MB max		256 MB std / 1024 MB max
Paper Handling	75-sheet Duplex Automatic Document Handler (DADH), 100-sheet Bypass Tray; Two 550-sheet user-adjustable front loading Paper Trays; Optional 3,600-sheet High Capacity Paper Trays (1,600- and 2,000-sheet drawers); Total up to 4,800 sheets		
Finishing Options	Offset Catch Tray: 300 sheets; Simple Office Finisher (available only with 232/238/245): 30-sheet, single-position stapling, 1,000 + 250-sheet trays; Office Finisher: 50-sheet, multi-position stapling, 2,000 + 250-sheet trays; Professional Finisher: 50-sheet, multi-position stapling, 1,500 + 250-sheet trays, 2-hole punch (4-hole option), saddle-stitch booklet making, v-folding; Convenience Stapler: 50-sheet		
Copy			
First copy out time	232 / 238: As fast as 4.5 seconds, 245 / 255: As fast as 3.3 seconds		
DADH Scan Speed	232 / 238: Up to 38 spm, 245 / 255: 55 spm		
Copy Resolution	600 x 600 x 8 dpi input / 600 x 4800 dpi interpolated output		
Copy Features	Basic Copy Features: Automatic 2-sided, auto reduction and enlargement, auto paper select, auto tray switching, image quality enhancements; Output Features: Transparencies, booklet creation, multi-up, covers, annotation, build job, inserts and tab copying, sample set, heavy-weight paper		
Print			
Processor	NA	1.4GHz AMD Athlon dedicated / 80 GB Hard Drive shared	
Connectivity	NA	Ethernet 10/100 BaseT, IEEE802.5 (Token ring) [via adapter], wireless ethernet (IEEE802.11a/b/g) [via third party adapter]	
PDL Support	NA	PCL6, PCL5e, PostScript 3 emulation with direct print TIFF, PDF (optional) LCDS, SCS, XES and IPDS via third party transforms	PCL6, PCL5e, PostScript 3 emulation, direct print TIFF, PDF LCDS, SCS, XES and IPDS via third party transforms
Print Resolution	NA	600 x 600 dpi	Up to 1200 x 1200 interpolated dpi
Print Features	NA	Delay-, sample-, secure- and store-print; simultaneous rip, receive, programme-ahead, queue-process and transmit; bi-directional print drivers; page-level programming; tab printing; embedded web server for remote control/monitor/setup; job monitoring at device and at desktop	
Fax			
Fax Options	Walkup Fax (33.6kbps, one-line [32 MB] and two-line [256 MB] options)	Walkup Fax (33.6kbps, one-line [32 MB] and two-line [256 MB] options) with LAN Fax	Walkup Fax (33.6kbps, one-line [32 MB] and two-line [256 MB] options) with LAN Fax, Internet Fax, Network Server Fax
Scan			
Scan Options	NA	Scan to Email, (128 MB RAM) (LDAP, Authentication)	Network Scanning with Email (LDAP, Authentication), Scan to Home, Scan to Mailbox as standard, FreeFlow Scan to PC Desktop and FreeFlow SMARTsend
Security Options	Fax Security	Fax Security, Secure Print, 802.1x, HTTPS (SSL), SNMP V3, IPsec, Network Authentication, Device Access Password Protection, IP Filtering, Audit Log, Disk Encryption-for Store Print and Scan to Mailbox features on WorkCentre Pro. Optional: Disk Image Overwrite, SecureAccess	
Accounting Options	Internal Auditor - Copy	Internal Auditor - Copy; Xerox Standard Accounting - Copy, Print, Fax, Scan	Internal Auditor - Copy; Xerox Standard Accounting - Copy, Print, Fax, Scan; Optional Job Based Accounting (3rd Party)
Other Options	Hole punching (with Office Finisher), Shelf kit, 256 MB Pre-Collation Memory, Foreign Interface Device, Xerox Copier Assistant™, WorkCentre/WorkCentre Pro Upgrade Kits	Hole punching (with Office Finisher), 256 MB Pre-Collation Memory, Foreign Interface Device, Xerox Copier Assistant™, Postscript 3 Emulation / MAC Ethertalk, WorkCentre Pro Upgrade Kit	Hole punching (with Office Finisher), 256 MB Pre-Collation Memory, Foreign Interface Device, Xerox Copier Assistant™, USB 2.0 (IEEE1284) / Parallel Port kit, Fax / Scan / Accounting Partner Solutions

