

XEROX[®]

CopyCentre[®]
C118

WorkCentre[®]
M118/M118i

Technology | Document Management | Consulting Services

copy | print | fax | email

Evaluator Guide

Xerox CopyCentre[®] C118

Xerox WorkCentre[®] M118/M118i



ABOUT THIS GUIDE

This guide will introduce you to the Xerox CopyCentre® C118 / WorkCentre® M118/M118i multifunction system and aid you in your evaluation process.

CONTENTS

Section 1 – Product Overview

| | |
|----------------------------|---|
| Product Overview | 1 |
| Configurations | 2 |

Section 2 – Evaluating Multifunction Systems

Suggests specific features to look for in a product of this class, how to evaluate those features, and how the Xerox products measure up.

| | |
|--|---|
| Technology | 3 |
| Convenience | 5 |
| Adaptability and Flexibility | 5 |

Section 3 – Configuration Summary, Specifications, Media List, Service & Support, etc.

| | |
|--|---|
| Specifications | 6 |
| Additional Information Sources | 8 |

SECTION 1

Product Overview

With outstanding print, copy, fax and emailing capabilities, the Xerox CopyCentre® C118 and WorkCentre® M118/M118i multifunction systems are ideal for businesses requiring a cost effective all in one solution capable of A3 printing and copying.

Exceptional Technology

Built on an historical leadership in copying and multifunction capabilities, the Xerox CopyCentre® C118 and WorkCentre® M118/M118i multifunction systems deliver superior image quality. Leveraging the latest in device management technology, intelligent consumables and PC fax capabilities, they are designed to put leading multifunction system capabilities within reach of every small office or workgroup.

Convenience

Sized for the space conscious office yet packed with all the power a busy office demands. From simple scan-to-email, to one-touch speed dials for faxing, all features are intuitive and concurrent.

Adaptable and Flexible




The CopyCentre® C118 and WorkCentre® M118/M118i multifunction systems are space saving devices that provide the flexibility to meet your needs with several available configurations. It can be configured as an independent copier, or as a comprehensive system, capable of printing, copying, faxing and emailing to meet the needs of every stage in the document creation and work processes of your business.

Depending on paper tray requirements, the Xerox CopyCentre® C118 and WorkCentre® M118/M118i multifunction system can be set up as a desktop device or on a separate stand for busier environments.



Shown: Xerox WorkCentre M118i with 1-tray module and 2-tray module options

CONFIGURATIONS

|  <p>CopyCentre C118</p> |  <p>WorkCentre M118</p> |  <p>WorkCentre M118i</p> |
|--|---|---|
| <p>The CopyCentre C118 comes packed with a full set of standard features for all your office copying needs.</p> | <p>The WorkCentre M118 starts with all the built-in power of the CopyCentre C118 and adds:</p> | <p>The WorkCentre M118i expands capabilities even further by:</p> |
| <p>18 cpm</p> | <p>OCT (Offset Catch Tray)</p> | <p>Scan to Email</p> |
| <p>7.4 sec First-Copy-Out-Time (FCOT)</p> | <p>64 MB of dedicated printer memory (expandable up to 320 MB)</p> | <p>ScanSoft PaperPort and OmniPage</p> |
| <p>300 MHz Power PC controller</p> | <p>600 dpi print resolution</p> | <p>Total machine memory of 288 MB</p> |
| <p>50% - 200% reduce/enlarge in 1% increments</p> | <p>10/100BaseTX Ethernet, Parallel and USB 2.0</p> | |
| <p>Paper Input:</p> <ul style="list-style-type: none"> • 250-sheet Tray 1, 90 gsm • 100-sheet bypass tray, 216 gsm • Optional trays 2, 3, 4 - 500-sheets each | <p>PCL6</p> | <p>Adobe PostScript 3</p> |
| <p>Duty Cycle:</p> <ul style="list-style-type: none"> • 50,000 (peak monthly volume) | <p>CentreWare Internet Services for remote device management</p> | |
| <p>Auditron for access control (Up to 50 users)</p> | <p>DADF and Duplex</p> | <p>DADF and Duplex</p> |
| <p>OPTIONS:</p> | | |
| <ul style="list-style-type: none"> • 1-tray module (adds 500-sheets) • 2-tray module (adds 1000-sheets) for a total paper capacity of 1850 sheets | <ul style="list-style-type: none"> • 1-tray module (adds 500-sheets) • 2-tray module (adds 1000-sheets) for a total paper capacity of 1850 sheets | <ul style="list-style-type: none"> • 1-tray module (adds 500-sheets) • 2-tray module (adds 1000-sheets) for a total paper capacity of 1850 sheets |
| <p>Stand</p> | <p>Stand</p> | <p>Stand</p> |
| <p>DADF and Duplex</p> | | |



Shown: Xerox WorkCentre M118i with 1-tray module (2-tray module option available) and stand options.

SECTION 2

Evaluating Workgroup Multifunction Systems

As the company that invented laser printing, Ethernet networking, and the first digital Multifunction System, Xerox has invested years of research and development in designing the most productive office systems in the industry. This experience has positioned Xerox as the recognised leader in office multifunction system design and performance.

Most multifunction systems look the same from the outside. And from a quick look at specifications on speeds, feeds and print resolution, you might incorrectly conclude that most multifunction systems are basically equal. This section of the Evaluator Guide will suggest ways you can thoroughly evaluate them, and show how the Xerox CopyCentre C118 and WorkCentre M118/M118i models can meet your needs.

Consider the key areas of:

- Technology
- Convenience
- Flexibility

EVALUATE

TECHNOLOGY

Whether it's quality of output, reliable up-time or advanced features, technological superiority comes back to the quality of the design and manufacture of the product in question.

CHECK ✓

- Consider image quality as a measure of technology implementation. Does the quality meet the requirements of your applications?
- Consider device up-time. Is the system simple to maintain or do you need to waste valuable time waiting for a service technician?
- Consider remote management. Can system administrators configure and control system features remotely?
- Consider scanning. Can the system you are evaluating scan a variety of document sizes in varying resolutions and provide a variety of output formats?

**HOW THE COPYCENTRE C118 / WORKCENTRE M118/M118i
MULTIFUNCTION SYSTEM EXCEEDS THE TECHNOLOGY REQUIREMENT**

With leading high-performance features, the Xerox CopyCentre C118 and WorkCentre M118/M118i keep productivity high and costs low.

MEETS **EXCEEDS**

1. 600 x 600 dpi print quality provides crisp text and fine line detail in all common office applications.

MEETS **EXCEEDS**

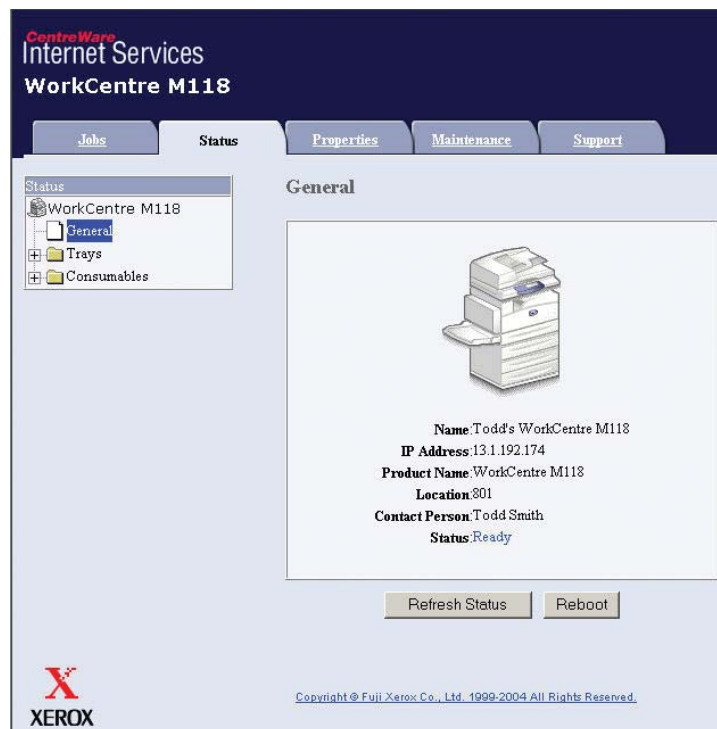
2. Xerox unique Smart Kit design for consumables detects and prevents downtime, avoiding the delay of a service call.

MEETS **EXCEEDS**

3. With industry leading device management, administrators can configure network settings, control users' access to features, manage job queues and track the status of consumables all from a remote location.

MEETS **EXCEEDS**

4. Scan-to-email up to A3 documents in resolutions of 200, 300, or 400 dpi and deliver the output in TIFF or PDF formats.



EVALUATE**CONVENIENCE****CHECK ✓**

- Convenience is important in a shared environment. The system under consideration must be easy for all users to access and operate. Consider ease-of-use features like PC fax and speed dials. Also consider the lesser-used features, are they as easy and intuitive as the every-day tasks?

**ADVANTAGE
XEROX****HOW THE COPYCENTRE C118 / WORKCENTRE M118/M118i MULTIFUNCTION SYSTEM EXCEEDS THE CONVENIENCE REQUIREMENT**MEETS EXCEEDS

1. Integrated installation tools and auto IP setup make the CopyCentre C118 / WorkCentre M118/M118i easy to get up and running right away.

MEETS EXCEEDS

2. Save time and money with PC fax capability. Access a file on your desktop and fax it over the network.

MEETS EXCEEDS

3. Enjoy the convenience of fast fax connections with one-touch speed dials and group dials.

MEETS EXCEEDS

4. Eliminate costly long-distance fax fees with the simple scan-to-email solution.

EVALUATE**FLEXIBILITY****CHECK ✓**

- Consider your needs both now and in the future. Can the equipment you acquire today expand to meet your needs in the future? Is the media capability, both size and weight, sufficient to meet your needs?

**ADVANTAGE
XEROX****HOW THE COPYCENTRE C118 / WORKCENTRE M118/M118i MULTIFUNCTION SYSTEM EXCEEDS THE FLEXIBILITY REQUIREMENT**MEETS EXCEEDS

1. From basic copy functions to a comprehensive multifunction solution, you can configure and option this system to meet your requirements both now and in the future.

MEETS EXCEEDS

2. Large media flexibility in both size (up to A3) and weight (up to 216 gsm) to meet all user requirements.

MEETS EXCEEDS

3. Up to 1850-sheet input from up to 5 different sources helps to meet the needs of a diverse workgroup.

SECTION 3

Specifications, Media List, Service & Support

SPECIFICATIONS

| FEATURE DESCRIPTION | XEROX CopyCentre C118 | XEROX WorkCentre M118 | XEROX WorkCentre M118i |
|--|--------------------------------|---|---|
| COPIER | | | |
| • First Copy Out Time (A4/Letter - long edge feed) | < 7.4 seconds | < 7.4 seconds | < 7.4 seconds |
| • Continuous Copy Speed | | | |
| A4/Letter - long edge feed, 1 sided | 18 cpm | 18 cpm | 18 cpm |
| A4/Letter - short edge feed, 1 sided | 10 cpm | 10 cpm | 10 cpm |
| • Reduce/Enlarge | 50% - 200% in 1% increments | 50% - 200% in 1% increments | 50% - 200% in 1% increments |
| • Maximum copy volume setting | 99 | 99 | 99 |
| • Duplex (two-sided copying) | Optional | Standard | Standard |
| NETWORK PRINTER | | | |
| • Printing Method | | Laser Xerography | Laser Xerography |
| • Controller | | Power PC 300 MHz | Power PC 300 MHz |
| • Printing Speed (A4/Letter - long edge feed) | | 18 ppm | 18 ppm |
| • Resolution | | 600 dpi | 600 dpi |
| • PDL | | | |
| PCL6 | | Standard | Standard |
| Adobe PostScript 3 | | | Standard |
| • Operating Systems | | Win 95/98, Me, 2000, XP, NT4.0, Server 2003, and Mac OS | Win 95/98, Me, 2000, XP, NT4.0, Server 2003, and Mac OS |
| • Network Protocols | | | |
| TCP/IP | | Standard | Standard |
| SMB | | Standard | Standard |
| IPP | | Standard | Standard |
| Port9100 | | Standard | Standard |
| EtherTalk | | Standard | Standard |
| • CentreWare Utilities | | Standard | Standard |
| SCAN-TO-EMAIL | | | |
| • Maximum scan size | | | 297 x 432 mm |
| • Resolution | | | 200 x 200 dpi 300 x 300 dpi 400 x 400 dpi |
| • Scanning Speed | | | 44 sheets/min. (A4 - long edge feed, 200 dpi) 18 sheets/min. at 600 dpi |
| • CentreWare Utilities | | | Standard |
| • Scan Format | | | TIFF, PDF |
| BUNDLED SOFTWARE | | | |
| • Scansoft | | | OmniPage 8.0 PaperPort 2.0 |

SPECIFICATIONS (CONTINUED)

| FEATURE DESCRIPTION | XEROX CopyCentre C118 | XEROX WorkCentre M118 | XEROX WorkCentre M118i |
|--|--------------------------|--|--------------------------------|
| FAX | | | |
| • Capability | | G3 | G3 |
| • Transmission speed | | < 3 seconds (G3: 33.3 kbps) | < 3 seconds (G3: 33.3 kbps) |
| • Compression system | | MH, MR, MMR, JBIG | MH, MR, MMR, JBIG |
| • Sending Document Size | | A3 | A3 |
| • Applicable Lines | | PSTN, PBX | PSTN, PBX |
| • Speed Dial/Group Dial | | 200 destinations, 30 groups | 200 destinations, 30 groups |
| GENERAL AND PAPER HANDLING | | | |
| • Warm-up time | | Less than 25 seconds | |
| • Network Interface | | 100Base-TX/10Base-T, Parallel Port (IEEE 1284), USB 2.0 | |
| • Original Weight (Document Feeder – DADF/ADF) | | One side: up to 90 gsm bond Double sided: up to 90 gsm bond | |
| • Original Size | | Platen or DADF: up to A3 C118 and M118 must choose either platen or DADF. DADF and Duplex standard on M118i | |
| • Original Capacity (DADF/ADF) | | Max 50 sheets (80 gsm) | |
| • Paper Source (A4/Letter – long edge feed) | | Standard: Bypass: 100-sheet and Tray 1: 250-sheet Optional: Trays 2, 3, 4: 500 sheets each Bypass: 100-sheet | |
| • Paper Size | | Tray 1-4 and Bypass: up to A3 | |
| • Paper Weight | | Tray 1: 60 - 90 gsm Trays 2, 3, 4 and Bypass: 60 - 216 gsm | |
| • Duty Cycle | | 50,000 | |
| • Auditron | | 50 users for copy, fax, scan. 200 users for print | |
| • Power Source | | 120V (12A), 220-240V (8A) | |
| • Max. Power Consumption | | 120V – 1.44 KW 220V – 1.76 KW 240V – 1.92 KW | |
| • Weight | | 54.3 Kg Main body + DADF + Duplex Kit 45 Kg Main body: digital copier version | |
| • Space Requirements (W/D/H) Base unit with platen | | 635 x 516 x 356 mm | |

ADDITIONAL INFORMATION SOURCES

The Front Panel

The Front Panel offers tools and information pages to help with machine set-up, feature selections, solve operational problems, media feed and supply issues.

The Customer Documentation CD-ROM contains:

- MFP User's Guide
- System Admin Guide

The Driver CD-ROM contains:

- PCL print drivers
- Fax drivers

On the Web

Visit www.xerox.com/office for:

- Product, supplies, and support information
- Downloading drivers
- Finding your local reseller
- On-line documentation

Visit www.xerox.com/office/support for:

Support and service information including the same troubleshooting knowledge base used by Xerox Customer Support staff to provide the latest technical information on:

- Application issues
- Errors
- Print-quality issues
- Troubleshooting

Questions? Comments? Problems?

*If you have any questions or issues with your evaluation printer,
please contact your Xerox sales representative or visit us on
the web at www.xerox.com/office*

