

# OBERON BarDIMM Box



## Office Solutions Overview

*Xerox's commitment to meeting and exceeding customers' document-related challenges in the office has never been more evident. Working closely with our Xerox Alliance Partners, we custom-build solutions that leverage the power and flexibility of Xerox office technology.*

*Through partnerships, technology, and business process innovation, Xerox makes your work... flow.*

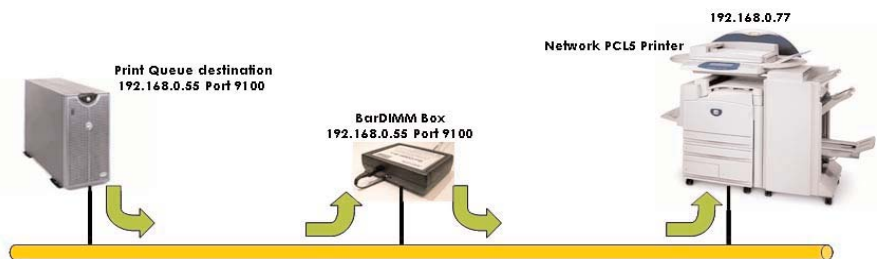
*This solution overview will provide you a brief description of how Xerox and our partner offerings continue to deliver solutions that satisfy your unique office workflow challenges, today and tomorrow.*



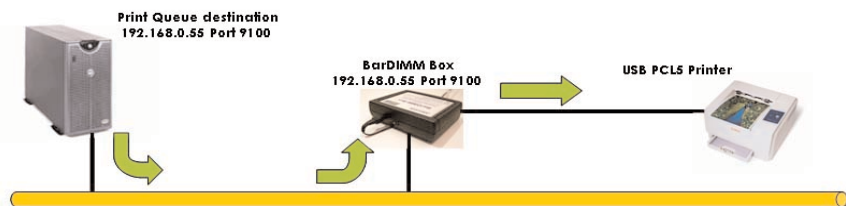
## Overview

Unlike some barcode solutions, which merely add fonts to a PC or printer, BarDIMM Box actually extends the PCL5e language with its own innovative barcoding language which has been adopted by many industry leaders such as SAP. Barcode formatting, error detection and checksum calculation are performed by the box, reducing the load on the host. Barcodes can be printed in almost any size or rotation, bar width and height. Caption text can be embedded in the bars or printed above or below the bars in a variety of fonts and sizes.

### Network Printers



### USB Printers



## Benefits

- Compliant with the most used barcodes
- Barcode printed on any document speeds up document management and digital archiving
- Easy to install
- Portable from one printer to another
- Turns any USB printer into a LAN printer
- Takes care of the Checksum calculation, making barcode printing easier
- Barcode printing speeds up the digital archiving procedure
- Reduces compatibility issues

## Specifications

Compatible with SAP R/3 and other ERPs, Windows, Oracle, Peoplesoft, JD Edwards, Unix, mainframes

### Supported 1D barcodes

RSS14, UPC-A/E, EAN-8/13, Code 39, Ext Code 39, Code 93, Ext code 93, 25 Interleaved, 25Industrial, 25 Matrix, Code 128, EAN/UCC 128, Codabar Monarch, MSI Plessey, OCR-A & B, ...

### Supported 2D barcodes

PDF 417, Macro PDF 417, AZTEC, UPS Maxicode, DataMatrix, QRCode, Codablock-F, RSS CC-A and CC-B.

### Supported postal barcodes

ZIP+4 Postnet, USPS Tray and Sack, USPS Zebra, UK Royal Mail RS4CC, Danish, French and German Postal Barcodes, Singapore and Australia Post 4state barcodes



## Xerox Products Supported

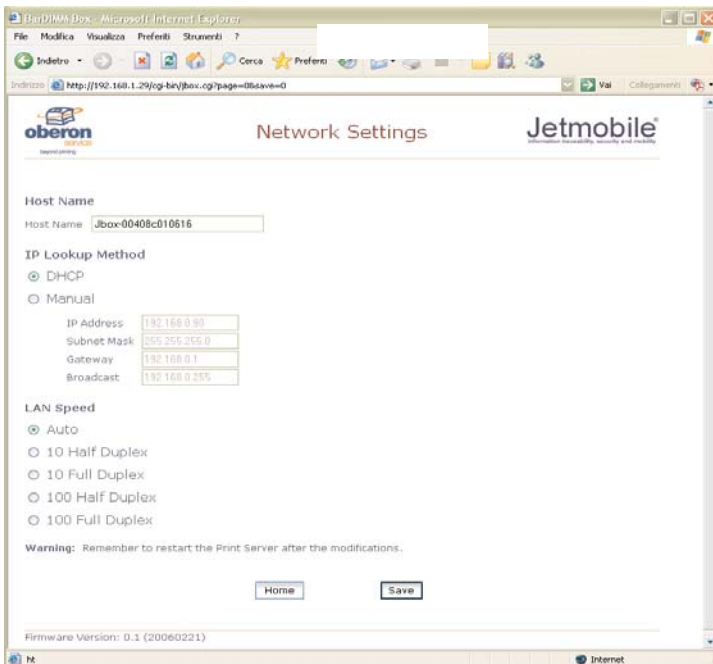
Any Xerox Printer or Multifunction Device, PCL5e enabled, LAN connected or USB connected

## Contacts

### Oberon Service Srl

Via G. Meda 28  
20141 Milano  
ITALY  
Phone +39 02 84 800 612  
Fax +39 02 84 800 538  
info@oberon.it  
support@oberon.it

*Technical contact:* Roberto Irrera  
ri@oberon.it  
*Sales contact:* Antonella Giannelli  
ag@oberon.it



**Working together...  
getting results.**

**Together we can.**

For more information  
on the Xerox Alliance Partners Program,  
visit [www.xerox-solutions.com](http://www.xerox-solutions.com)