



Xerox® CentreWare® Web

Simplify your device management.

Improve ROI on printing devices and reduce IT administration burdens.

The advanced capabilities of Xerox® CentreWare® Web make it easy to intelligently manage print devices from a single powerful interface. It gives you a browser window on virtually all of your networked printers and multifunction devices across your enterprise. From here you can manage installations, configuration settings, run reporting and diagnostics – even perform break/fix actions. Best of all, CentreWare Web is available as a free download at www.xerox.com/centrowareweb.

Discover output devices with ease.

CentreWare Web gives IT managers the ability to find and manage printers and multifunction devices in the enterprise, whether they're networked or locally connected. It supports both Xerox® and non-Xerox devices, so it's the ideal all-in-one tool to intelligently manage today's multi-vendor device environments.

Easily and securely discover multiple Simple Network Management Protocol (SNMP) v3 devices in one step. In addition, the administrator can run a scheduled discovery or import a list of devices to be added to CentreWare Web. The administrator can also perform a quick discovery by simply entering in the IP Address of the device and best of all, CentreWare Web can automatically detect any newly added SNMPv3 device on the network.

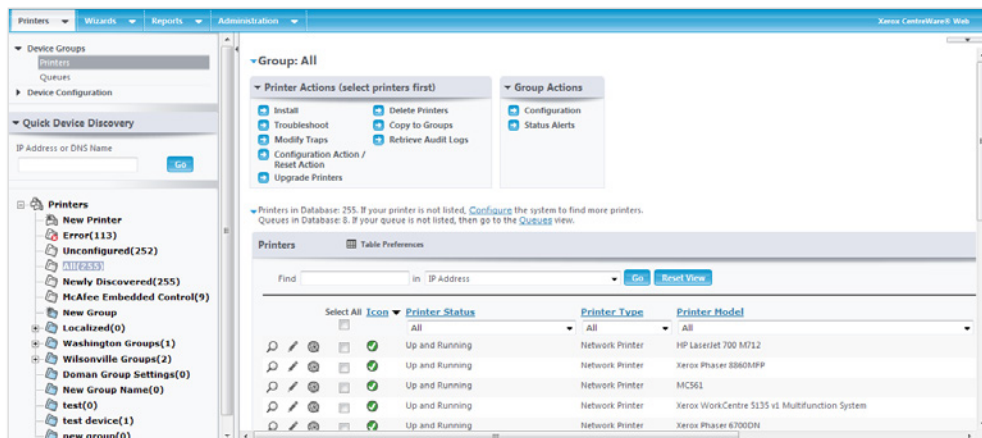
Work efficiently with one-stop administration.

CentreWare Web setup and basic installation wizards make it easy to manage configurations centrally. You can automatically configure firmware upgrades to be run on specific groups of devices, during low network traffic hours and receive confirmations once upgrades are configured. The tool's intuitive interface makes it simple to configure even advanced features, with an extensive built-in help system and powerful customization tools.

It's easy to install purchased options such as McAfee® Integrity Control on devices from a central location by simply uploading the feature key file and deploying to a single device or a fleet of devices through configuration sets. This feature works on models that support the upload of a feature key.

Reduce IT costs with proactive remote monitoring.

You can minimize the impact of outages on employees and the helpdesk by configuring CentreWare Web to alert IT managers of potential device issues before they can become problems. The tool can send email alerts warning of low consumable levels and device errors such as fuser or drum malfunctions. This means fewer helpdesk or service calls and increased IT staff productivity.



CentreWare Web gives IT managers the ability to find and manage printers and multifunction devices.

Remotely troubleshoot and quickly resolve issues.

Xerox® CentreWare® Web makes it easy to perform troubleshooting routines on remote devices that are in an error state. You can troubleshoot individual devices or query and test a group of devices at the same time with detailed feedback and the ability to send test pages from the remote web console.

At a more detailed level, the tool can evaluate a device problem and provide time-coded status updates along with an assessment of the skill level needed to solve the problem. Administrators can also review documents currently in the print queue and enable error traps to provide even more detail about the problem.

Remote fleet management is quick and easy. Built directly into the CentreWare Web's display*, administrators can interact with their fleet remotely – running the devices directly; as if they are standing at the device*.

* Available for Xerox® devices built on Xerox® ConnectKey® Technology.

Secure role based access controls.

CentreWare Web's support for standards-based security protocols such as HTTPs and Windows-based authentication helps you quickly integrate the tool into your existing security systems.

New capabilities of CentreWare Web make it easy to setup and allow printers to be managed in groups with access controls. Role-based administrator controls can be used to limit access for remote administrators and control the ability to run or modify configuration sets or reports. In addition, CentreWare Web can automatically discover devices that support the McAfee® Embedded Control and add them to built-in group named McAfee Embedded Control, allowing the administrator to easily identify and respond to alerts generated by these devices.

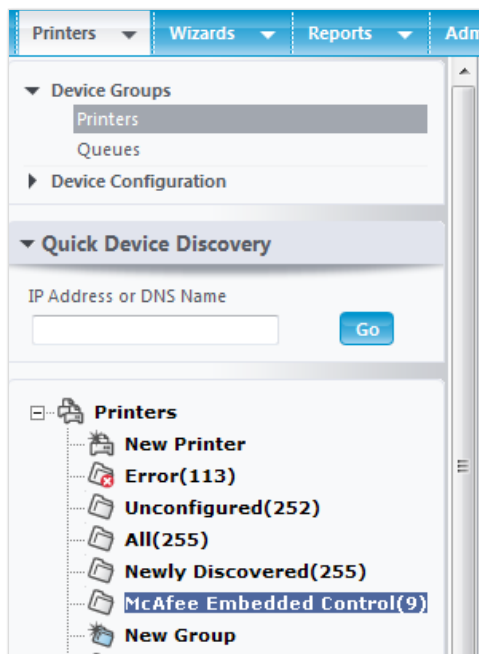
An administrator can also setup security levels, determine whether email alerts are configured, if a server is registered, and if the device is registered with the McAfee ePolicy Orchestrator (ePO) server.

Gain insight with comprehensive reporting.

CentreWare Web offers an extensive array of customizable reports, including assets, usage, alert history and network accounting. You can schedule automated reporting of individual printers, or groups of printers, as well as easily export selected reports.

The reporting system helps you take control of color output costs as well, by enabling you to track color and black-and-white usage separately.

Supplies reports allow you to check supplies before the device triggers an alert that the supply is low. You can register eligible devices with Xerox® Remote Services and enable automated supplies reordering for even more convenience and hands-off administration.



CentreWare Web can automatically discover devices that support the McAfee Embedded Control and add them to built-in group named McAfee Embedded Control.

Benefits

Better Cost Management

- Proactive alert monitoring reduces service calls and downtime
- Easy deployment and simplified administration maximize IT staff productivity, letting you shift IT resources to other critical tasks
- Reduce tool expense and complexity; CentreWare Web is all you need to manage both Xerox® and non-Xerox (RFC 3805 SNMP-compliant) output devices
- Centralized administration allows IT managers to remotely manage systems, eliminating the expense of on-site service calls
- Integrates with existing Microsoft Windows security, requiring no additional security/authorization tools
- Network accounting-enabled to provide accurate usage tracking, reporting and billing
- Ensures more accurate meter reads for bill-back to appropriate groups
- Usage tracking lets you intelligently manage assets cost-effectively
- Create audit reports with easy to use exported HTML or CSV formats
- Consistent reports in familiar, easy-to-read formats, giving you comprehensive, easy to understand analysis that's instantly actionable
- Flexible data collection settings can provide data daily, weekly, monthly or annually
- Allows you to proactively ensure supplies are available with easy access to supplies reports
- Installation of feature options from a central location, such as McAfee® Embedded Control and XPS minimizes install time at the individual devices
- Offers the ability to capture device Audit Logs to facilitate non-repudiation needs

More Effective Device Administration

- Familiar web browser interface makes it easy to set up, configure, upgrade, repair and track devices on the network
- Troubleshooting tools simplify diagnosis and resolution of device problems
- Configuration Sets let you establish templates to define network protocol, scanning, job accounting and security settings across compatible devices
- Configuration Tasks can be easily created, scheduled and applied to a set of devices which are selected using a flexible logical (boolean) expression
- Enables a variety of settings specific to Hewlett-Packard devices
- Supports discovery of non-IETF MIB-compliant devices such as HP JetDirect-based printers
- Uses existing Microsoft Active Directory configurations, enhancing printer discovery and queue management
- Supports custom grouping of devices to make them easier to manage
- Group polling feature allows you to set polling intervals for specific device groups
- Easily manage and stay compliant with Security policies by configuring alerts and grouping devices in separate windows
- Manage Paper Settings and Default Fax Settings remotely – apply settings on the entire fleet in one easy step
- Built directly into the CentreWare Web's display, administrators can interact with their fleet remotely*
- Multiple threads for device software updates of a fleet improves the speed of upgrading multiple devices*

Operating Systems Supported

- Windows® Vista® Professional SP1
- Windows Vista Professional x64 SP1
- Windows 7 Professional
- Windows 7 Professional x64
- Windows 8
- Windows 8 x64
- Windows 8.1
- Windows 8.1 x64
- Windows Server 2008
- Windows Server 2008 x64
- Windows Server 2008 R2
- Windows Server 2012
- Windows Server 2012 R2

Hardware/System Requirements

(depending on configuration, additional hardware may be required)

- Free disk space: 3 GB (20 GB if collecting job/historical data from thousands of devices)
- 3 GHz x86 processor, 2 GB of RAM, with SQL Server® or SQL® Express installed on the same system
- Databases supported: Microsoft SQL Server 2008, 2012 and 2014, Microsoft SQL Server Express 2008, 2012, and 2014

Database may be installed on the same system as CentreWare Web. A separate database server is recommended for any of the following configurations:

- More than 20 groups configured for concurrent status polling
- More than 20 alert profiles specified
- Job data consumption is greater than 100,000/week

Client Requirements

Before installing CentreWare Web, you must first install Microsoft .NET Framework 3.5 SP1 and 4.0. The CentreWare Web client interface is web-browser based and can be accessed on a platform that supports the following:

- Microsoft® Internet Explorer version 10.x and 11.x, Edge

* Available for Xerox® devices built on Xerox® ConnectKey® Technology.

For more information, visit us at www.xerox.com/centrewareweb.