

# Professional Color Matching from the color leader

**For graphic artists and color professionals,** color matching is a critical task. Xerox PhaserMatch® 4.0 color management and calibration software brings stability to the process – helping to deliver consistent, predictable and reproducible color matching between your Phaser 7760 color printer and other CMYK or RGB output devices like the DocuColor® 12 copier/printer or iGen3™ Digital Production Press.

The TekColor® Corrections built-in to your Phaser 7760 color printer include common profiles such as EuroScale, Commercial Press, and sRGB. These provide good results, but don't account for unique matching requirements or specific media types. Xerox PhaserMatch 4.0 software provides advanced functionality to edit and create TekColor Corrections and calibrate the color of the Phaser 7760.

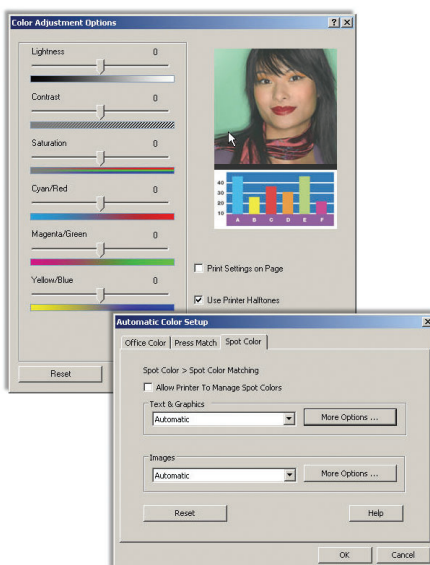
## TEKCOLOR CORRECTIONS

The Phaser 7760 color printer has a number of TekColor Corrections built-in to match the output of a host of devices. These TekColor

Corrections effectively warp the color gamut of the Phaser 7760 printer to more closely mimic that of the target device.

Using the “Automatic” mode for managing TekColor Corrections within the Phaser 7760 printer driver enables the printer to automatically detect the office graphics, press separations, monochrome graphics, and spot colors within a document – and apply the specified TekColor Correction to each of them. This ensures the Phaser 7760 will print your RGB, CMYK, and Pantone colors to your specifications.

You can further define which TekColor Corrections the Phaser 7760 will apply to each graphical element on the page – consistently delivering the output you expect. Each Phaser 7760 includes a built-in library of TekColor Corrections for a wide variety of output devices, including computer displays, other printers and MFP systems, and production-class printers.



PhaserMatch® 4.0  
Color Management and  
Calibration Software

## PhaserMatch 4.0 Software at a Glance

**With PhaserMatch 4.0, you can:**

- Calibrate your printer
- Edit existing TekColor corrections
- Create new TekColor corrections targeted to specific output devices (a specific printing press, LCD monitor, etc.)
- Save new/edited TekColor corrections for downloading to the printer

**PhaserMatch 4.0 benefits include:**

- Color calibration for accurate, consistent results
- Gain control over repeatable color – saving time and money
- Achieve greater color accuracy for design visuals and prepress proofs
- Reduce iterations and ensure digital proofs meet press color expectations



## PHASERMATCH 4.0 COLOR MANAGEMENT AND CALIBRATION SOFTWARE

PhaserMatch 4.0 builds and extends on the capabilities of standard TekColor Corrections by giving you even more control over the color output of your Phaser 7760 color printer. In addition to color calibration capabilities, PhaserMatch 4.0 delivers two primary capabilities to help you achieve the output your business needs:

- **Edit existing TekColor Corrections –** Using the “Edit Profile” feature, you can edit an existing TekColor Correction and fine-tune the color output and color matching capabilities of your Phaser 7760 color printer. Once you have edited the TekColor Correction to your specifications,

you can download the edited profile to the Phaser 7760 – making it available to all users of the printer via the print driver interface.

- **Create new TekColor Corrections –** Starting with the ICC Device Profile of the Phaser 7760 color printer and your intended target output device, PhaserMatch 4.0 can create a new TekColor Correction for your Phaser 7760. Again, you can download the new TekColor Correction to your Phaser 7760 printer – making it available in the print driver for all of your users.
- **Advanced editing features –** A range of advanced features are also available in PhaserMatch 4.0 to further hone and refine the color output of your Phaser 7760.

## PHASERCAL COLOR CALIBRATION SOFTWARE

PhaserCal is the color calibration application within PhaserMatch 4.0. Color laser printers should be periodically calibrated to eliminate changes in printed colors caused by environmental conditions and normal wear and tear on the printer's consumables. PhaserCal can account for these changes and maintain consistent print output.

PhaserCal offers two color calibration methods:

- PhaserCal can control and communicate with a spectrophotometer connected to your computer, or a data file with measurement information can be imported into PhaserCal – resulting in highly accurate color calibration for your Phaser 7760 color printer.
- Alternatively, a visual calibration method allows for quick and convenient checks without requiring a spectrophotometer.

Both calibrations are standard functionality on every Phaser 7760 color printer.

## AVAILABILITY

PhaserCal comes standard on the Phaser 7760DN model. PhaserMatch 4.0, which includes PhaserCal, is standard on the Phaser 7760GX and Phaser 7760DX models – and is offered as an option for the Phaser 7760DN.

## SYSTEM REQUIREMENTS

### Apple Macintosh

- Apple Power Macintosh computer
- Macintosh OS X, version 10.2 (version 10.2.3 recommended) operating system
- 128 MB RAM required, 256 MB RAM recommended
- 600 x 800 dpi resolution color monitor able to display thousands of colors
- Xerox Phaser 7760, 7750, or 7700 color laser printers only
- Installation of the Xerox Phaser 7760, 7750, or 7700 Macintosh printer driver (this driver must be used to utilize PhaserMatch 4.0 TekColor corrections)

### Microsoft Windows

- Intel Pentium III computer or better
- Windows 2000 or Windows XP operating system
- 128 MB RAM required, 256 MB RAM recommended
- 600 x 800 dpi resolution color monitor able to display thousands of colors
- Xerox Phaser 7760, 7750, or 7700 color laser printers only
- Installation of the Xerox Phaser 7760, 7750, or 7700 Windows printer driver (this driver must be used to utilize PhaserMatch 4.0 TekColor corrections)

