

XEROX®

Technology | Document Management | Consulting Services

print | copy | scan | e-mail | fax

Outside, it's a work of art. Inside, it's all business.



Strikingly designed. Incredibly advanced.

Right at the center of
your networked office.

Introducing the Xerox
WorkCentre® Pro 35/45/55
Advanced Multifunction
Systems. A new family of
powerhouses that help you
do more work and better work
than ever before.

Featuring the walk-up simplicity and
standout copying performance you
expect from Xerox, the WorkCentre Pro
represents a true revolution in multifunction
productivity. They can stand right at
the heart of today's networked office—
enabling hard copy and digital to
converge in a seamless, efficient flow
of information, whether it's across
the hall or around the globe.

The Xerox WorkCentre Pro. It's the
most advanced multifunction system
available today.

Secure peace of mind.

The Xerox WorkCentre Pro is
designed with extensive security
features to restrict access, manage
usage and ensure confidentiality so
your private data stays that way.

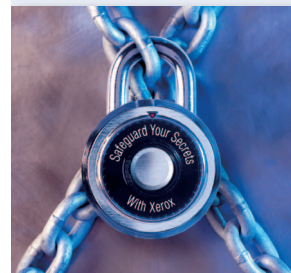
Engineered for performance.

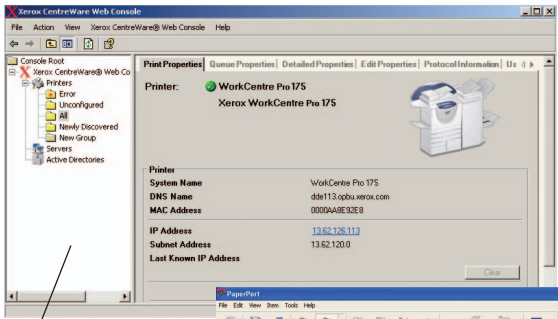
Best-in-class productivity. The WorkCentre Pro systems employ the same industry-leading network controller technology used by the Xerox 535, 545, 555 systems, which in independent testing printed a typical office test suite up to three times faster than competitive models tested.* They can complete more jobs in less time than any comparable printer on the market.

Unparalleled multifunctionality. Designed for the results-oriented office, the Xerox WorkCentre Pro handles multiple tasks *simultaneously*. Whether you need to print, copy, scan, e-mail or fax, you can always access the function you need—even when other jobs are running.

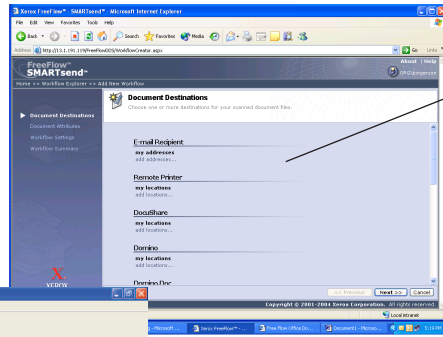
Flexible, open architecture. The WorkCentre Pro allows for easy integration with third-party software solutions. In fact, Xerox has partnered with leading software developers who provide innovative, customized solutions that extend the power and value of your system.

Built for endurance. Designed to keep you up and running, the WorkCentre Pro features automatic monitoring that actually helps avoid problems. And when the system alerts you, you can quickly and easily insert a customer replaceable module to prevent downtime *before* it happens.

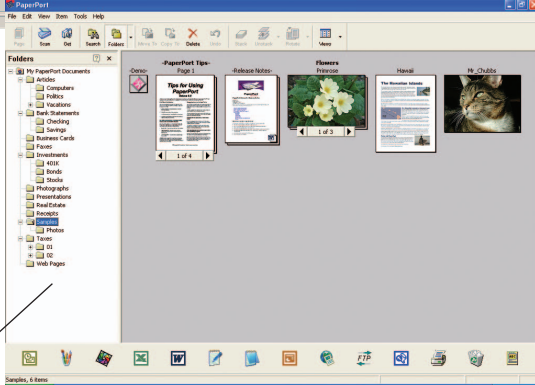




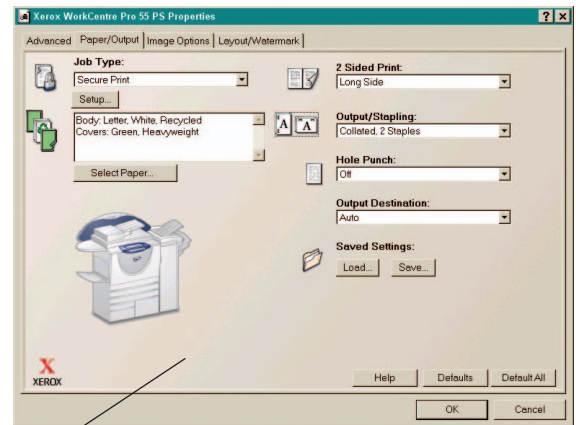
Xerox CentreWare® software provides multiple management tools for the user and for network administrators.



Use FreeFlow™ SMARTsend™ software and your multifunction device to scan paper documents into digital form and distribute them to multiple destinations in a single scan...to email addresses, repositories, network folders, FTP folders, Web URLs, even remote printers.



Scan to PC Desktop® lets you move documents into word processing, spreadsheets and database applications for editing, distribution and storage...saving time, effort and money.



CentreWare® print drivers have clear graphical user screens that make selection of advanced features very easy.



Capture, send and store. All at the touch of a button.

With the WorkCentre Pro 35/45/55, world-class printing and copying are only the beginning. Everything you need to effortlessly handle your other office tasks is right at your fingertips.

Versatile fax options.

With Internet fax, you can send documents via the network to avoid costly long-distance charges and busy signals. And fax server integration eliminates the need for dedicated phone lines and consolidates assets by leveraging existing network resources. Or, if you require traditional fax functionality, it can be built right into your WorkCentre Pro.

Powerful scanning.

You can instantly scan to your desktop, network file server, document management application or even the Web. What's more, it's easy to integrate this capability into your business workflow using existing partner solutions.

Simple and secure e-mail.

Distribute documents to any number of recipients with fast, convenient e-mail functionality. Plus, you can easily auto-search for these recipients using your existing network address book.



Call today. For more information or detailed product specifications, call **1-800-ASK-XEROX** or visit us at www.xerox.com/office.



Unrivaled service and support.

Behind every Xerox product is a large network of customer support that's unrivaled in the industry and available when you need it. Xerox service professionals use leading-edge technologies to keep you up and running. They're even linked to the engineers who designed your product, so you can be confident when you choose Xerox. And genuine Xerox supplies are always easily available.

Total satisfaction guaranteed.

The exclusive Xerox Total Satisfaction Guarantee, recognized as unique in the industry, covers every Xerox WorkCentre® Pro which has been continuously maintained by Xerox or its authorized representatives under a Xerox express warranty or Xerox Maintenance agreement. You decide when you're satisfied.

Designed to be kind to our planet.

Xerox products conserve natural resources through designs that minimize waste during manufacturing and use, maximize energy efficiency in your office, and work reliably with Xerox recycled paper. Our Green World Alliance program encourages recycling of Xerox-brand used supplies.

For more information, please visit www.xerox.com/environment.html

CONFIGURATIONS	WorkCentre® Pro 35	WorkCentre® Pro 45	WorkCentre® Pro 55
Speed	35 pages per minute (ppm)	45 pages per minute (ppm)	55 pages per minute (ppm)
Copy Pre-collation Memory	Standard RAM: 384 MB—dedicated Maximum RAM: 512 MB—dedicated		
First-Copy-Out Time	4.6 seconds	3.4 seconds	
Maximum Resolution	600 x 600 dpi x 8 bit		
Paper Input	75-sheet Duplex Automatic Document Feeder		
Paper Tray Options selected at time of purchase	Two 550-sheet user-adjustable trays and one 100-sheet user-adjustable bypass tray, OR two 550-sheet user-adjustable trays and one 100-sheet user-adjustable bypass tray plus 3,600-sheet High-Capacity Feeder (one 2,000-sheet tray and one 1,600-sheet tray)		
Standard Tray Sizes, Weights	5.5 x 8.5"/A5 to 11 x 17"/A3 16 lb bond/60 gsm to 110 lb index/200 gsm; Envelopes (optional, Tray 2 only)		
Paper Output Options selected at time of purchase	Offsetting Catch Tray (up to 300 sheets) OR Office Finisher (up to 2,000 sheets)		
Network Controller	Processor: 433 MHz Intel® Celeron®—dedicated RAM: 128 MB—dedicated Connectivity: Ethernet 10/100BaseT, optional USB port, 10Base2, 10Base5 via adapter PDL Support: PCL® 5e, PCL® 6, PostScript® 3 emulation, Tiff and PDF OS Support: Windows® 9x/Me®/NT® 4.0/2000/XP®, Novell® NetWare® 4.x/5.x/6, Solaris® 2.5.1/2.6+, HP-UX® 10.2/11, IBM AIX® 4.2+, Linux® Intel® (various), Mac® OS 8.x, 9.x, OS X		
Special Features	Build Job, AutoIQ image quality control, auto covers insertion, auto page insertions from up to two trays, multi-up copies, negative image, reverse image, image shift, auto center, auto reduction/enlargement, auto paper selection, multi-set printing with send-once/RIP-once/print-many technology, RIP-while-print multitasking, print drivers with custom graphical user interface, paper selection from the driver by type, embedded Web server for remote control/monitor/set-up, job monitoring and control at the device and at the desktop, concurrent scan-while-print		
Monthly Duty Cycle	Up to 100,000	Up to 150,000	Up to 200,000
Options/Accessories	Embedded Fax (33.6 kbps, one-line and two-line options), Network Scanning With E-Mail (with user authentication and address book search), Network Fax Server Integration, Network Accounting Enablement, Internet Fax, Image Overwrite Security, Xerox Copier Assistant™ Software (assistive software for the visually impaired or persons with limited dexterity or mobility), Two-Hole Legal Punch* (requires Office Finisher), Three-Hole Punch (requires Office Finisher), Foreign Device Interface, Copy Pre-collation RAM Upgrade (256 MB), FreeFlow™ SMARTsend™, Scan to PC Desktop Client Software, USB 1.1 Printer Port		

*Not available at product introduction



© 2005 XEROX CORPORATION. All rights reserved. XEROX®, CentreWare® and WorkCentre® Pro are trademarks of XEROX CORPORATION. In support of Xerox's environmental leadership goals, these models may contain some recycled components that are reconditioned. Support Center Practices (SCP) Certification is a registered trademark of Service Strategies Corporation. The "Editor's Choice" logo is the exclusive service mark of **Better Buys for Business**. ENERGY STAR® is a U.S. registered mark. As an ENERGY STAR® Partner, Xerox Corporation has determined that these products meet the ENERGY STAR® guidelines for energy efficiency. Terra Choice Environmental Services, Inc., of Canada has verified that these products conform to all applicable Environmental Choice EcoLogo requirements for minimized impact to the environment. Product appearance, build status and/or specifications are subject to change without notice. Printed in U.S.A. 12/03, 2/05 610P715680C P35BR-01UC