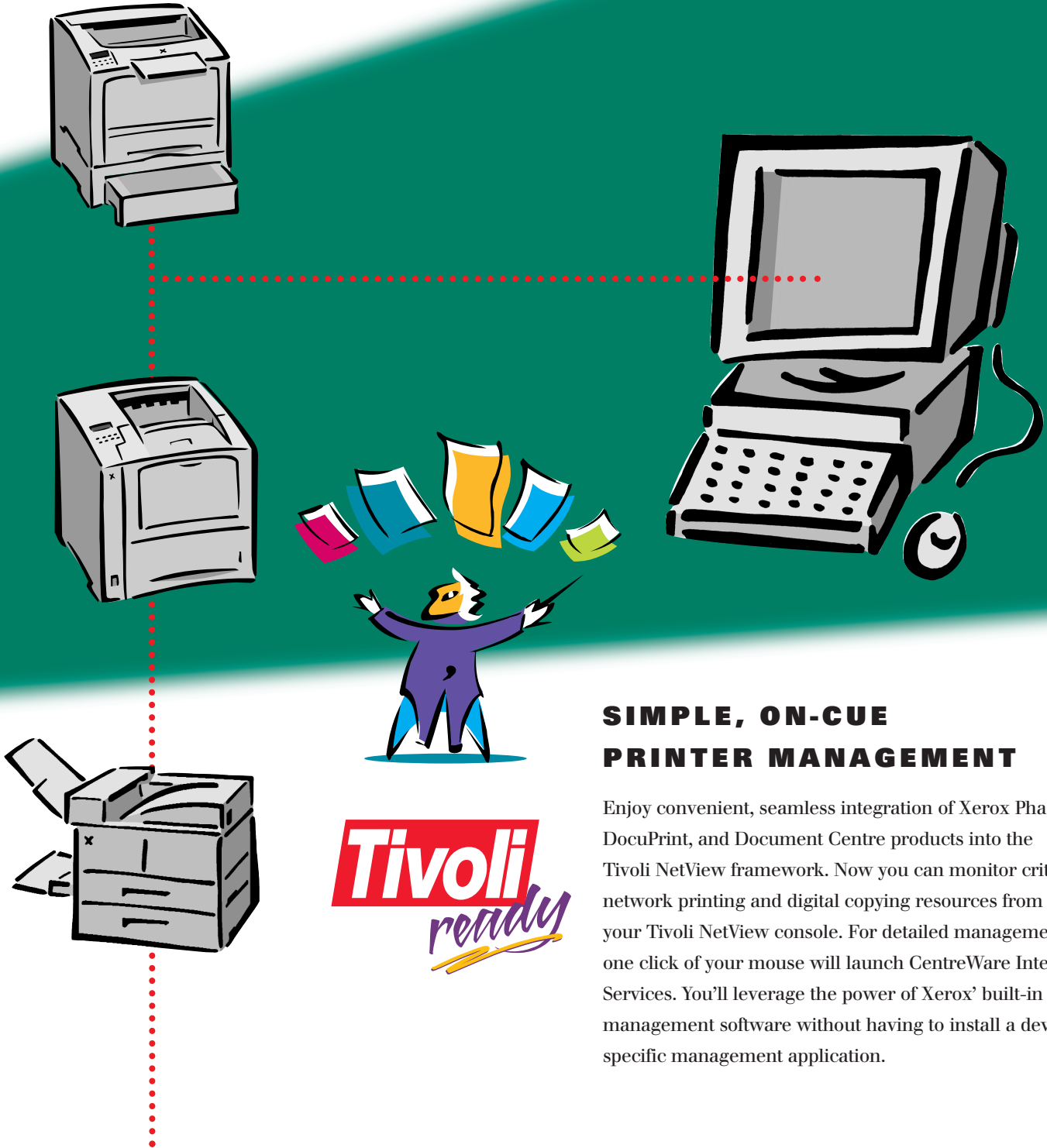


XEROX

CENTREWARE

FOR TIVOLI® NETVIEW®

XEROX NETWORK PRINTERS



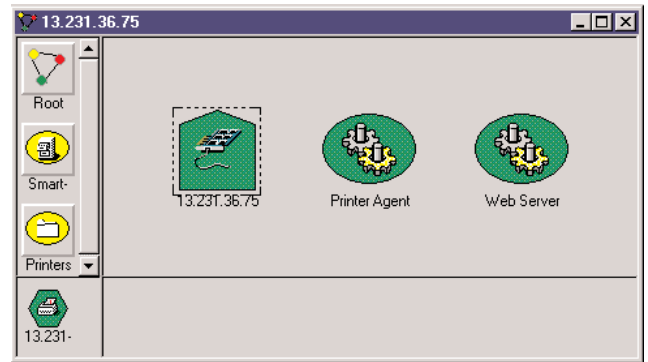
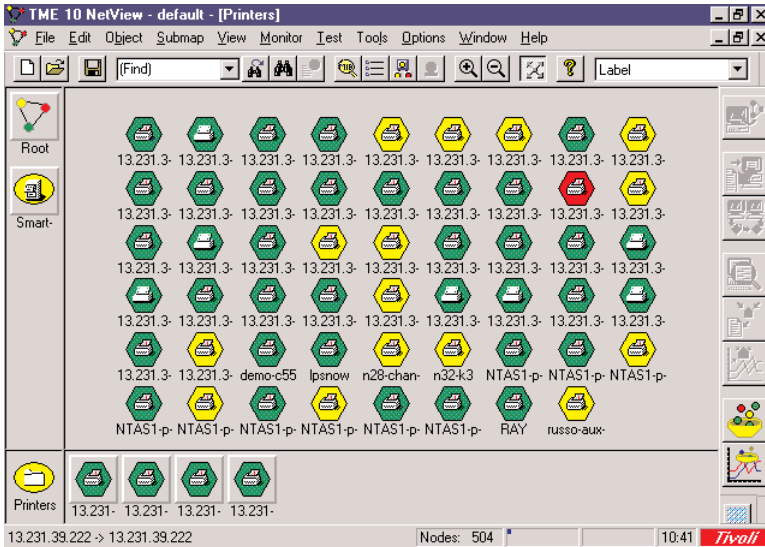
SIMPLE, ON-CUE PRINTER MANAGEMENT

Enjoy convenient, seamless integration of Xerox Phaser®, DocuPrint, and Document Centre products into the Tivoli NetView framework. Now you can monitor critical network printing and digital copying resources from your Tivoli NetView console. For detailed management, one click of your mouse will launch CentreWare Internet Services. You'll leverage the power of Xerox' built-in management software without having to install a device-specific management application.



THE DOCUMENT COMPANY
XEROX®

FEATURES AND BENEFITS OF CENTREWARE FOR TIVOLI® NETVIEW®



Recognition of Xerox office network devices.

CentreWare for Tivoli recognizes Xerox office network devices and provides a convenient, custom icon for easy identification of all mission-critical printing resources. In addition, a Xerox printing Smart Set is created to provide a focal point for management of your Xerox network devices.

Color-coded icons for quick, at-a-glance status monitoring. CentreWare builds on the NetView icon-based monitoring capability by adding color-coded status information. When an important printing resource needs attention, you'll know it instantly from the color of the icon. The color advises you of the seriousness of the condition, saving you valuable time by helping you prioritize your printer management tasks.

CentreWare Internet Services are only a mouse-click away. Need detailed information on device status? Want to reconfigure or modify device settings? Point and click and you'll launch our breakthrough CentreWare Internet Services—right from the Tivoli console. With the built-in management power of an embedded web server, CentreWare Internet Services let you manage Xerox office devices from your default web browser, without having to install yet another proprietary printer-management application.

Load and compile Xerox Common Management Interface MIBs. For SNMP-savvy users who want highly detailed control and monitoring capability, the XCMIBs provide access to detailed device status and configuration information via the SNMP protocol.

Seamless integration with Tivoli Event browser. Xerox device alerts are automatically logged into the Tivoli Event browser according to the severity of the alert (e.g., out of toner, paper jams, out of paper, etc.). In addition, frequently repeated alerts are filtered out to prevent cluttering event logs with redundant information.

Integration with Tivoli Enterprise Console (TEC).

CentreWare for Tivoli can easily be configured to automatically forward device alerts to the TEC. It lets you fit Xerox office devices seamlessly into your comprehensive, integrated event management and response capability.

RELEASES SUPPORTED:

TME 10 NetView version 5.1.1 and TEC version 3.61 or greater

PRODUCTS SUPPORTED:

Xerox DocuPrint C55, N17, N24, N32, N40, NC60, N2125, N2025, N2825, N3225, N4025, Xerox Phaser® 1235, 7700.

Xerox Document Centre DC230, DC240, DC255, DC265, DC332, and DC340

SOFTWARE DISTRIBUTION:

Xerox CentreWare for Tivoli NetView is available with the purchase of any WorkSet enabled printer. Updates to the software can be found at www.xerox.com

XEROX™, The Document Company, the digital X™, CentreWare™, DocuPrint™, Phaser®, Keep the Conversation Going. Share the Knowledge., the "Maestro" logo, and all Xerox product names are trademarks of XEROX CORPORATION. Other product and/or company names herein are trademarks of their respective owners. Product appearance and/or specifications are subject to change without notice. 11/01 NETFS-14UC

**KEEP THE CONVERSATION GOING.
SHARE THE KNOWLEDGE.**

THE DOCUMENT COMPANY
XEROX®