



XEROX®

Technology | Document Management | Consulting Services

With EFI Fiery Network Colour Server

Precise colour Faster Affordable



Xerox Phaser® EX7750 with Fiery Network Colour Server for outstanding colour tools and print performance

Whether you're proofing for production or printing on demand, the Xerox Phaser EX7750 colour printer with the Fiery Network Colour Server delivers output that matches your expectations. With colour that's accurate, predictable *and fast*, and tools that help you master complex layouts and variable data printing, it's a total solution that delivers knockout prints – seamlessly and affordably.



Xerox Phaser EX7750DXF includes a High-Capacity Feeder and a 1,000-sheet Finisher with stapling and offset stacking.

True Fiery Workflow

The powerful and easy-to-use tools you need for creating, managing and producing outstanding colour.

- Standard Fiery Command WorkStation® 4.2 (Windows) and LE 1.0 (Mac OS X only) software to streamline queue and print job management
- Fiery FreeForm 2 for variable data printing
- Standard Fiery Graphics Arts features include Spot-On® and Auto Trapping
- Optional EFI Impose v2.5 software for advanced imposition capability

Remarkable Print Quality

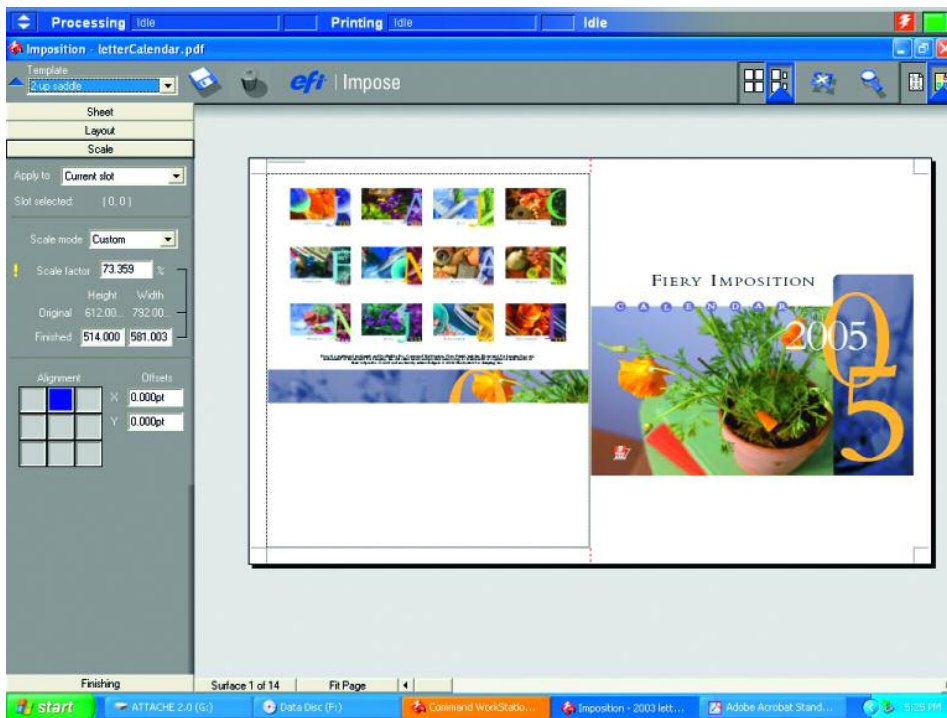
Expect terrific resolution and consistent, accurate quality, page after colourful page.

- 600 x 600 x 4 dpi in standard mode
- Enhanced gloss mode for plain paper with 1200 x 1200 x 1 dpi resolution
- Automatic printer calibrations keep colour consistent day in, day out
- Advanced colour management for extra fine-tuning precision

Superb Performance at an Attractive Price

Get value-packed performance features and accessories that get the job done fast.

- A speedy 35 ppm for quick outputs with lightning fast RIP speeds for complex jobs
- 60 GB hard drive for high-volume file storage and queue management
- As fast as 11 seconds until the first colour page out
- Reliably handles the widest range of media weights (up to 255 gsm) and custom sizes
- 1,000-sheet Finisher with offset stacking and stapling to simplify your workload (DXF model)
- Five feeder trays for a total capacity of 3,150 sheets (DXF model) or 2,150 sheets (GX model)



Imposition Tools

Create documents that amaze your audience without going to design school.

Using the new, enhanced version of EFI Impose v2.5 (optional), even a novice can create documents, such as tri-fold, Z-fold and gatefold brochures – with the software that you are accustomed to using. An easy-to-use interface, new template options and advanced editing enable you to create jobs that you used to send to a design studio. EFI Impose v2.5 is the ultimate imposition solution for virtually anyone who prints. Use its powerful imposition tools for printing books, magazine proofs and newsletters. EFI Impose v2.5 will help you to save time and money, eliminating review cycles and expensive layouts.



Job Management

Centralised print job management is simpler than ever.

Fiery Command WorkStation® 4.2 Software sets the standard for conveniently supervising and manipulating digital print jobs. This advanced controller interface enables easy queue management and RIP control, letting you manage incoming jobs for release later or for processing as they come in. You can store frequently printed documents right on the server to make reprints simple, and change job parameters with the click of a button. The intuitive Command WorkStation's interface guides new users step-by-step through every job process and provides previews that eliminate guesswork.

Variable Data (FreeForm 2)

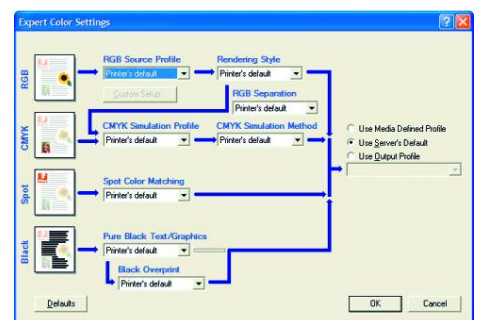
Targeted messaging gets results.

It's been proven that readers respond better to targeted, personalised messages. The FreeForm 2 software's powerful Variable Data Printing solutions enable you to produce customised colour output, varying from simple, text-only changes to sophisticated applications containing customised photos and graphics. The extra value and impact you add to your marketing communications will increase response rates, orders, response time, customer retention and profits.

Colour Management

Produce predictable, brilliant colour right "out of the box."

Fiery ColorWise® 3.0, the latest in colour management software, offers built-in intelligence for producing consistently precise colours from all applications, platforms and file formats. Its easy-to-use colour adjustments simplify learning for the novice user. For the advanced colour professional, ColorWise provides effortless handling of RGB and CMYK. And Spot-On® colour technology allows you to edit and define custom spot colours even after you send your job to the queue. With this unique feature you can edit existing spot colour tables or assign a new PANTONE® colour. Plus, VisualCal™ offers another calibration method – to help you get the colours you want, every time. And the X-Rite Densitometer and EFI Profiler Kit with ES-1000 (optional) offer expanded calibration methods.





CONFIGURATIONS	EX7750GX	EX7750DXF
Performance		
Print speed	35 ppm colour and black and white	
First page out	> 11 seconds	
Server memory	256 MB	
Server processor	2 GHz Intel Celeron processor, Adobe PostScript 3, PCL6 emulation	
Server internal hard drives	60 GB internal hard drive, Internal DVD/CDRW drive	
Maximum printing duty cycle	150,000/month	
Print Quality		
Maximum resolution	Standard 600 x 600 x 4 dpi, Enhanced gloss mode (for plain paper) with 1200 x 1200 x 1 dpi	
Networking		
Network connectivity	10/100/1000BaseTX Ethernet	
Paper Handling		
Automatic 2-sided printing	Standard	
Paper input capability		
Standard	150-sheet Tray 1, 500-sheet Tray 2	2,500-sheet high-capacity feeder 1,000-sheet finisher (stapler/stacker)
Productivity		
Standard features	Intelligent Ready, Custom Size Pages, Embedded Web Server, Job Accounting, Usage Analysis Tool, Booklet Printing, Smart Trays, PDF 1.4 direct, Extended Font Storage, Job Collation	
Colour management	ColorWise 3.0, Spot-On, Auto Trapping	
Warranty	Fully inclusive cost per page service agreement	

INPUT/OUTPUT SPECIFICATIONS

Print Resolution

- 600 x 600 x 4 dpi
- ECT Compression
- 1200 x 1200 x 1 dpi enhanced gloss for plain paper

Page Description Languages

- Genuine Adobe® PostScript® 3
- PCL 6 emulation
- PDF Native (v1.4)

Fonts

- 136 PostScript Fonts
- 45 Scalable PCL Fonts

PAPER HANDLING

• Tray 1/MPT: 150-sheet Tray (standard)

65–255 gsm, coated, glossy, labels, envelopes, Phaser Trifold Brochures, Phaser Weatherproof paper, Phaser Postcards, Phaser 45-Series Transparency Film. Media sizes: A4, A5, A6, A3, B5 JIS, B4 JIS, ISO B5, SRA3, and Custom sizes; Envelopes: #10, A7, DL, B5, C6, C5, C4.

Manual 2-sided printing: 65-255 gsm plain paper, heavy paper and letterhead

• Tray 2: 500-sheet Tray (standard)

65–169 gsm, glossy coated paper, thin card stock, Phaser Weatherproof paper, Phaser 45-Series Transparency Film. Media sizes: A4, A5, A3, B5 JIS, B4 JIS, and Custom sizes. *Automatic 2-sided printing: 65–105 gsm plain paper, heavy paper and letterhead.*

• Tray 3, 4, 5: 1,500-sheet lower tray deck (standard on GX)

65–169 gsm, glossy coated paper, thin card stock, Phaser Weatherproof paper. Media sizes: A4, A5, A3, B5 JIS, B4 JIS. *Automatic 2-sided printing: 65–105 gsm plain paper, heavy paper and letterhead.*

• Tray 3, 4, 5: 2,500-sheet high capacity feeder (standard on DXF)

65–169 gsm, glossy coated paper, thin card stock, Phaser Weatherproof paper. Media sizes: Tray 3: A4, A5, A3, B5 JIS, B4 JIS. Tray 4, 5: A4, B5 JIS. *Automatic 2-sided printing: 65–105 gsm plain paper, heavy paper and letterhead.*

USER EXPERIENCE

Controller Interface

- Fiery LCD Interface
- Fiery Advanced Controller Interface (optional)
- WebTools Interface

Document Management Utilities

- Command WorkStation 4.2 (Windows)
- Command WorkStation LE v1.0 (Mac OS X only)
- Fiery WebTools
- Fiery FreeForm 2
- EFI Impose v2.5 (optional)

User Interface

- Fiery Driver—for PostScript and PCL

Colour Management

- ColorWise 3.0 (Calibrator, Profile Manager, Colour Editor, Colour Setup, Spot-On)
- X-Rite® Densitometers (optional)
- EFI Profiler Kit with ES-1000 (optional)
- Auto Trapping

EX7750 Printable Area

- | | |
|---------------------------|-----------------|
| • Standard Paper Size | Image Size* |
| Minimum (A6) | 95 mm x 138 mm |
| Maximum (SRA3) | 303 mm x 440 mm |
| • Custom Size Paper | Image Size* |
| Minimum (139 mm x 181 mm) | 129 mm x 171 mm |
| Maximum (297 mm x 431 mm) | 287 mm x 421 mm |

*5 mm borders on each side

CONNECTIVITY

(Multiple Protocol Auto-sensing)

NetWise™ 3

- 10/100/1000BaseTX (Ethernet)

Supported Protocols

- TCP/IP
- Novell® IPX/SPX (NDS and Bindery)
- SMB (Microsoft® peer-to-peer)
- AppleTalk® (PAP)

Frame Types

- 802.2, 802.3
- Ethernet II, Ethernet
- SNAP

Operating Systems Supported by Print Drivers

- Windows® 2000/XP
- Mac® OS 9.0, 10.3.3 (Native and Classic)
- Unix printing (LPR/LPD only – no drivers provided)

SUPPORTED VI FORMATS

- Fiery FreeForm 2

DIMENSIONS

Server

- Width: 248 mm
- Height: 514 mm
- Depth: 540 mm
- Weight: 14.5 kg

Monitor

- Width: 345 mm
- Height: 344 mm
- Depth: 166 mm
- Weight: 4.4 kg

Printer EX7750GX

- Width: 645 mm
- Height: 856 mm
- Depth: 714 mm
- Weight: 121 kg

Printer EX7750DXF

- Width: 1194 mm
- Height: 1067 mm
- Depth: 715 mm
- Weight: 166 kg

ENVIRONMENT

- Noise level: 33dBA standby, 51dBA running

POWER REQUIREMENTS

- 100-240 VAC RMS automatically configured, 50/60 Hz single phase

REGULATORY AGENCY APPROVALS

- EU CE Class A
- US FCC Class A
- Canada ICES-003 Class A
- Listed to UL 60950-1:2003

CONFIGURATIONS

- EX7750GX EX7750V_GX
- EX7750DXF EX7750V_DXF

OPTIONS AND UPGRADES

- Fiery Advanced Controller Interface (FACI), Keyboard, Monitor and Mouse 098N01272
- FACI Enablement Kit (must be ordered with FACI) 097N01453
- X-Rite DTP32HS Densitometer 098N01739
- EFI Profiler Kit with ES-1000 301N11000
- Server Stand 098N01673
- 1,000-sheet Finisher (EX7750GX only) 097S03185
- EFI Impose v2.5 097N01455



EFI Fiery EX7750 Network Colour Server shown with optional FACI kit and Server Stand.



Adobe PostScript® 3™