

XEROX[®]

Technology | Document Management | Consulting Services

DocuColor[®] 3535



Creo[™] Spire[™] CXP3535e
Network Color Server

the compact color solution for print on-demand professionals



Xerox DocuColor® 3535 and the Creo™ Spire™ CXP3535e Color Server: the professional tools for superior print-on-demand workflow



There is nothing better than the Creo Spire CXP3535e Network Color Server and the compact Xerox DocuColor 3535 Printer/Copier for quality on-demand printing of outstanding full-color

documents. Whether you need to proof for a production printer or create top quality short run prints of CMYK or RGB images — Spire has the productivity features to deliver efficiency, quality, flexibility and speed through the entire workflow.

Excite your customers with excellent results in minimal time...every time.

- Professional image enhancement and color management tools
- Advanced document printing enables mixed stocks in a single job
- Seamless integration with graphic arts workflow and formats
- Complete variable information printing solution

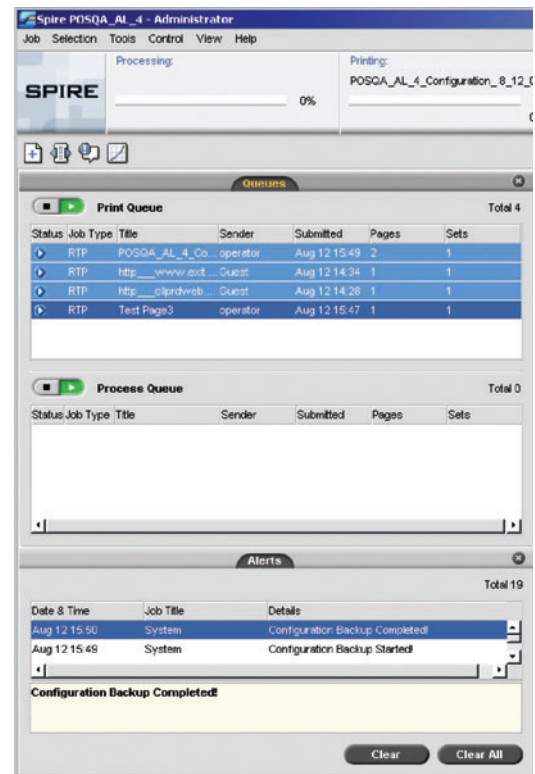
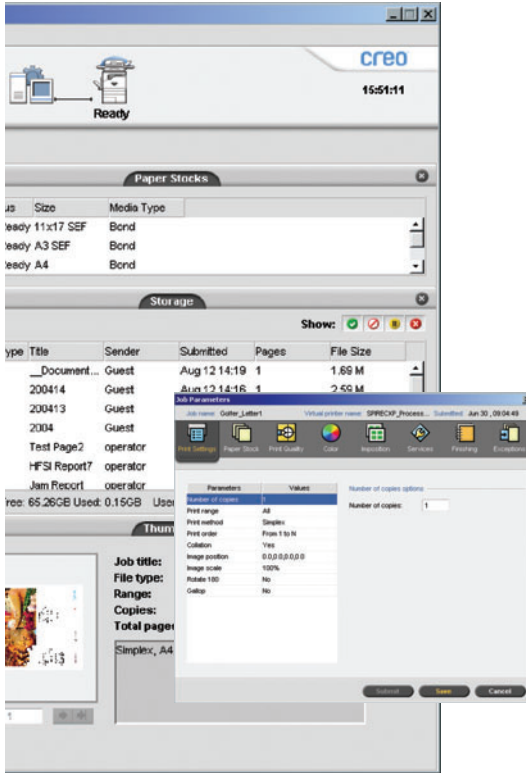


Image Quality and Color Management

Enhance your image with a new standard for excellence in color quality

The name Creo is synonymous with outstanding color quality and control. The Spire CXP3535e harnesses the power of advanced emulations and transformations to produce color that will meet the demands of discriminating color professionals. Plus, the image and color management tools are easy for the novice, with sophisticated controls for expert-level handling.





Easy to Use

Intuitive interface and smart features simplify job control

All actions on the Spire CXP3535e are performed from within a single interface — easily guiding users of varying skill levels through each stage of even the most complex jobs. Using informative icons and graphical menu options, this user-friendly and feature-rich environment helps deliver outstanding results with less time and effort.

Imposition

Post-RIP imposition made simple to deliver jobs faster and better

Whether printing booklets, brochures, magazine proofs, or newsletters, the Spire CXP3535e Color Server allows all jobs to be imposed, regardless of their input format or application. A variety of time-saving features enable you to preview, edit and assemble entire documents prior to and after the RIP.

Productivity and Workflow

Expand your document possibilities while meeting the most demanding deadlines

Spire network color servers are unrivaled in productivity. All the tools you need are at your fingertips to do everything from preflight checks through proofing and imposition...fast. These features and more provide robust, efficient, and flexible just-in-time printing capabilities that professionals need to stay competitive.



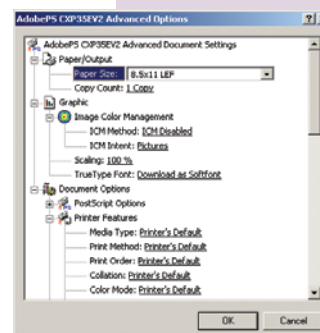
Variable Information Printing

Variable information solutions with the power and flexibility for any situation

Regardless of the type of variable jobs that you fulfill, the Spire Color Server with the DocuColor 3535 provide the most comprehensive variable information (VI) solution to let you take full advantage of this high value printing capability. The unique advantage of a Spire color server is that VI printing is just like printing a non-VI job: you can impose, preview and color-correct just as you would with any job.

The features you need to do your best work...fast

- Keep your environment secure with Disk Wipe, to erase any image or text data on the Spire's Hard Disk Drives, and Safe Disk, a removable Hard Disk Drive option.
- Maximize productivity by creating Virtual Printers
- Make better use of system resources with OPI-compliant tools to automatically replace low-resolution files in layouts with high-resolution files for printing
- Assemble, merge, edit, and preview entire documents either before or after a job has been RIP-ed with Creo's unique Job Editor
- Use expert-level tools including anti-aliasing, color gamut simulations, and sophisticated transformations to handle traps and overprints
- Get a productivity boost with features such as Gallop, which enables extremely long and/or complex jobs to print while simultaneously processing the rest of the file
- For quality assurance, perform preflight checks to make sure all the necessary fonts and files are present so you RIP only the jobs that will successfully complete
- The Spire CXP3535e supports many popular authoring tools and all leading industry formats — Creo Variable Print Specification (VPS), Xerox VIPP, PPML, PDF and Adobe® PostScript®



DocuColor® 3535



Get exactly what you want from your DocuColor 3535 Printer/Copier. For more information, contact your Xerox Representative or call 1-800-ASK-XEROX. To learn more about Xerox, visit www.xerox.com/office

PRINTER/COPIER SUPPORTED

- Xerox DocuColor 3535 Printer/Copier

SPECIFICATIONS

The Creo Spire CXP3535e network color server offers robust processing power with native PDF v1.3, v1.4 and PS3 support under a new level of flexibility and workflow control. The Intel Pentium 4 Processor architecture combined with Creo Spire™ technology makes it one of the fastest color servers on the market.

ROBUST ARCHITECTURE

- Microsoft Windows XP Pro operating system enhances efficiency and reliability while maintaining simplicity and ease of use
- 3.06 GHz Intel Pentium 4 processor enables powerful, rapid processing for maximum system utilization and efficient RIPping and printing

WORKFLOW

- Intuitive, user-friendly GUI streamlines workflow and eases the learning curve
- Preflight provides quality assurance
- APR/OPI automatic picture replacement tools save RIPping time and disk space
- Process while print saves time and streamlines workflow
- Last-minute color and imposition corrections maximize flexibility, ensure fast turnaround and reduce the cost of error
- Optimized PDF RIPping
- Page programming and mixed page attribute support
- Customized workflow serves a variety of production needs
- Pre-and post-RIP job preview and editing enhance control
- Files are stored in compact ready-to-print format for immediate reprinting with no further processing
- Calibration-independent jobs enable reprint at any time on any printer
- Network-enabled archival/retrieval of post-RIPped files
- Supported input files: Native PDF 1.3 and 1.4; PostScript Levels 1, 2 and 3; DCS1; DCS2; EPS; EPSF; VPS; VIPP; TIFF; TIFF/IT; CT/LW

Note: The Creo Spire CXP3535e is an upgrade to the standard DocuColor 3535 network color server. The standard DocuColor 3535 color server is not required to install the Spire CXP3535e.

PRINT QUALITY

- Creo Full Auto Frame application fully automates the trapping process
- Anti-aliasing enhances text and line art
- Advanced color management enables superior continuous-tone images
- Smooth Scale upgrades low-resolution images to printer resolution quality
- Color emulation assures perfect color matching

VARIABLE INFORMATION (VI)

- Optimized VI RIP for maximum productivity
- Element-based VI solution enhances efficiency
- Preview of pre-and post-RIP VI jobs reduces the cost of error
- On-the-fly composition supports repeat runs
- Last-minute post-RIP imposition capabilities
- Element caching management enhances workflow flexibility
- Gallop™ print while RIP feature for very long runs

VARIABLE INFORMATION FORMATS SUPPORTED

- CREO VPS
- Xerox VIPP
- PPML

HARDWARE

- Intel Pentium 4 3.06 GHz Processor
- 512 MB of memory
- 80 GB hard drive for system and user disk space
- Second 80 GB hard drive for image disk space
- Additional SCSI port for an optional peripheral
- DVD/CD Drive
- 15" (38 cm) flat panel display
- Keyboard and two-button mouse
- X-Rite DTP 34 Densitometer for calibration

OPTIONS

- Safe Disk Removable Hard Disk Drive Kit
- Server Stand (optional)

NETWORK SUPPORT/SERVICES

- 10/100/1000baseT auto switching
- Protocols: TCP/IP, Appletalk, Novell IPX (NDS & Bindery), NetBEUI
- Services: Appleshare compatible, LPR printing, NFS compatible (optional)

PRINTER DRIVERS

- Win 98, NT 4.0, Win 2000, ME, XP
- Mac OS 8.51 and higher

SPACE/POWER REQUIREMENTS

- Server size: 21.7" (55.0 cm) high x 7.1" (18 cm) wide x 17.3" (44.0 cm) deep
- Server Weight: 38.5 lbs. (17.5 kg)
- Supply Voltage: 100-240Vac 50/60 Hz (autoswitching)

REGULATORY AGENCY APPROVALS

- US FCC Class A
- Canada ICES-003 Class A
- EU CE Class A
- C-UL



Creo Spire CXP3535e Network Color Server shown with optional Server Stand.



Adobe® PostScript® 3™

© 2005 Xerox Corporation. All rights reserved. XEROX® and DocuColor® are trademarks of or licensed to XEROX CORPORATION. ADOBE® is a trademark of Adobe Systems, Inc. APPLE TALK®, APPLESHARE®, MAC® and LASERWRITER® are trademarks of Apple Computer, Inc. CREO, the Creo logo, Gallop and Spire are trademarks of Creo Inc. INTEL® and PENTIUM® are trademarks of Intel Corp. MICROSOFT®, WINDOWS® and WINDOWS NT® are trademarks of Microsoft Corp. NOVELL®, NDS® and NFS® are trademarks of Novell, Inc. VPS® is a trademark of Levi, Ray & Shoup, Inc. Product appearance, build status and/or specifications are subject to change without notice. The Xerox Total Satisfaction Guarantee applies to equipment under a Xerox warranty or a full service maintenance agreement and is subject to certain conditions. 10/03, 10/04, 1/05 610P717240B DC3BR-04UC