

XEROX[®]

Technology | Document Management | Consulting Services

DocuColor[®] 240 / 250



printer-copier

DocuColor[®] 240 / 250 Evaluator Guide



ABOUT THIS GUIDE

This guide will introduce you to the Xerox DocuColor® 240 / 250 colour printer-copier and aid you in your evaluation process.

CONTENTS

Section 1 – Introducing the Xerox DocuColor 250 Printer-Copier	1
Product overview	1
Feature set	2
Section 2 – Evaluating Colour Laser Printer-Copiers	3
<i>Suggests specific features to look for in a printer-copier of this class, how to evaluate that feature and how the DocuColor 250 printer-copier measures up.</i>	
Performance and print speed	4
Image quality	6
Scalability	9
Section 3 – Configurations, Specifications, Part Numbers	10
Feature review	10
Configuration summary	11
Supplies and accessories	12
Recommended media	12
Specifications	13
Specifications for the EFI® Fiery® Network Color Server	14
Information sources	15

SECTION 1

Product Overview

The DocuColor 240 / 250 is a single-pass, colour laser printer-copier product made for colour professionals. It offers impeccable image quality, fast speed and incredible value.

And it's versatile. Xerox offers a selection of input devices, advanced finishers, high performance controllers and more. So, whether you're a commercial printer, a pay-for-printer or you run the centralised reproduction department, you can tailor the DocuColor 240 / 250 printer-copier to meet your specific needs.

Performance

The DocuColor 250 printer-copier produces up to an outstanding 50 colour pages per minute and up to 65 black and white pages per minute. Add to that a blazing first-print-out time as fast as 7.8 seconds in colour and as fast as 4.3 seconds in black and white.

The DocuColor 240 printer-copier produces up 40 pages per minute in colour and up to 55 pages per minute in black and white. Like the DocuColor 250, it has a first-print-out time as fast as 7.8 seconds in colour and as fast as 4.3 seconds in black and white.

Image Quality

The DocuColor 240 / 250 printer-copier provides 2400 x 2400 dpi for terrific print and copy output. You can also take advantage of Enhanced Gloss mode for output that stands out from the crowd.

Plus, this device gives you all the colour tools you need to get the colour you expect. High quality calibration gives you sharp results, day in, day out. And profiling options enable you to emulate different output devices through the proofing process.

Scalability

There are so many options with the DocuColor 240 / 250 – from advanced finishing options to professional colour tools and security features. Busy environments can also add a high-capacity feeder for fewer interruptions.

SECTION 1

Feature Set

Features include:

- Up to 50 ppm colour, 65 ppm black and white (DocuColor 250)
- Up to 40 ppm colour, 55 ppm black and white (DocuColor 240)
- First-page-out time as fast as 7.8 colour, 4.3 black and white
- True 2400 x 2400 dpi printing and copying
- 200,000 page per month duty cycle
- Feed up to SRA3 media from the 250-sheet Bypass Tray (Tray 5) and Oversized High Capacity Feeder (OHC)
- Enhanced Gloss mode
- Electronic Pre-Collation
- Standard 250-sheet DADF
- Up to 3,260 paper capacity (Plus an additional 2,000 sheets with an optional High Capacity Feeder)
- Large toner capacity for extended job runs
- Full-panel, colour touch screen
- EFI bustled controller

Optional features include:

- Advanced finishing options including stapling, stacking, hole punching, saddle-stapling with centre fold, cover sheets
- A selection of world-class controllers*
- RPX-i workflow software solution
- 2,000 Sheet Feeder (A4)
- 2,000 Sheet Oversize High Capacity Feeder (up to SRA3)
- Foreign device interface kit for coin ops, card readers and accounting solutions
- Convenience stapler
- Mobility Plate
- Offsetting Catch Tray (OCT)



DocuColor 250 shown with 2,000-sheet feeder, Professional Finisher and convenience stapler

* The DocuColor 240 / 250 supports multiple controllers and workflows. For the purpose of this document we will focus on the EFI bustled controller.

SECTION 2

Evaluating Colour Laser Printer-Copiers

For colour professionals, there's nothing more vital than a device that can produce speedy, precise colour printouts. As the inventor of laser printing and printer-copier devices, Xerox knows how to deliver. We've invested years of research and development in designing devices that offer fast, accurate and affordable colour.

Based on our in-depth understanding of customer needs in colour critical environments, Xerox recommends you consider the following criteria in the evaluation process of a colour printer-copier product:

Performance and Print Speed

Can it keep up with the demands of multiple jobs and client deadlines?

Image Quality

Does it produce colour and clarity that exceed the expectations of colour professionals?

Scalability

Are you able to add on functionality as your business grows and changes?



SECTION 2

Evaluating Colour Laser Printer-Copiers

EVALUATE PERFORMANCE AND PRINT SPEED

Consider colour print speed

Colour is where it counts. It has to be as fast as it is precise. So, it's very important to consider colour print speed. This ensures the fast turnarounds you need for tight deadlines. Also consider the first-page-out time — key for proofing or quantity-of-one environments.

THE XEROX ADVANTAGE

Ever think your printer could print as fast in colour as it does in black and white? The DocuColor 250 is not that far off. It prints in colour up to an incredibly fast 50 ppm. That's really close to its black and white print speed, which is up to 65 ppm. The DocuColor 240 offers fast print speeds as well, with 40 ppm in color and 55 ppm in black and white. You'll also enjoy a first-page-out time as fast as 7.8 seconds.

Think about processor speed

Consider the time it takes from clicking “print” to the final delivery of the colour document to the output tray. The device has to be able to process large photographic images with ease. Test documents with complex images to see how fast they're processed and printed.

THE XEROX ADVANTAGE

The DocuColor 240 / 250 comes with a robust 2.8 GHz Intel® Celeron® processor and EFI® bustled controller. This ensures fast processing and printing of multiple full-color images. 512MB of memory is dedicating to printing. This can be upgraded to a full 1 GB of memory, giving the device plenty of processing power.

Measure overall performance

Send a mix of colour and black and white documents of varying types and lengths to the printer. See how the printer performs. It should be a relatively fast and seamless process. And you'll really be able to see the overall performance including: network transmission time, first-page-out time and multi-copy engine speed.

THE XEROX ADVANTAGE

No matter how big or complex the mix of print jobs, the DocuColor 240 / 250 can handle it. With fast print speeds and first-page-out times, a fast network connection and speedy image processing, this device makes work, work for you. Plus, it has five standard trays and a 250-sheet DADF, so you can get the big jobs done without having to reload paper.

SECTION 2

Evaluating Colour Laser Printer-Copiers

EVALUATE PERFORMANCE AND PRINT SPEED, cont.

Think about consumables

Never let consumables slow you down. For example, toner. No one wants to run out of it in the middle of a job. That's why you should consider a printer that lets you change toner while you're printing. This keeps your productivity at its highest. No more missed deadlines.

Toner capacity is important too. With a fast printer-copier, you do not want to continually have to replace empty toner cartridges.

THE XEROX ADVANTAGE

The DocuColor 240 / 250 printer-copier was designed so that you can load toner while the machine is still copying or printing. You don't need to wait for the machine to stop and declare a "toner low" message. With two black toner cartridges, your jobs keep running with only the occasional request for toner.

Plus, all Xerox consumables, or SMart Kit™ replaceable units, are easy to load. Anyone can do it with no problem whatsoever.



SECTION 2

Evaluating Colour Laser Printer-Copiers

EVALUATE IMAGE QUALITY

Look for precision resolution

Do images look sharp and crisp? Are they absolutely clear with defined edges? Your printout should meet the expectations of professional colour experts. Make sure you examine a print sample to ensure it meets the highest quality standards.

THE XEROX ADVANTAGE

With 2400 x 2400 dpi for both copy and print you can be sure you're getting incredible resolution for outstanding output. It's excellent for printing photographs and fine lines. And when you really want images to stand out, you can choose the Enhanced Gloss Mode for great results.

Ensure faithful colour reproduction

Look for uniformity and consistency in large areas of solid fill. Check for smooth transitions where edges meet. Check that the image quality and color remain consistent page after page, particularly after 100 or 200 prints of the same image. Does the printer perform periodic automatic calibration to maintain print-to-print consistency?

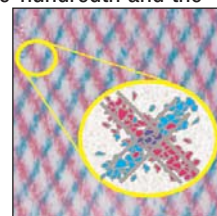
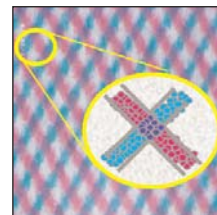
THE XEROX ADVANTAGE

Xerox is the leading innovator in toner and photoreceptor technology. From its pioneering work with carbon-based toner in the 1950s – creating the copier marketplace – to the latest breakthrough, Emulsion Aggregate (EA) toner, Xerox continues to pave the way.

The DocuColor 240 / 250 utilises EA toner, which is chemically grown, rather than ground, resulting in very small, consistent particles. This brings you fine colour detail and smooth transitions. Plus the toner cartridges (also called SMart Kit™ replaceable units) have developer material, or carrier, included. This allows the constant addition of fresh developer material for consistent colour quality – copy after copy, print after print.

Automatic density control also assures consistent colour from the first print to the one-hundredth and the one-thousandth.

You can even set colour calibration for different types of media. For example, you might want to bring out true skin tones on a media that has a bright white finish. With this feature you can get realistic colours on almost any type of media.



SECTION 2

Evaluating Colour Laser Printer-Copiers

EVALUATE IMAGE QUALITY, cont.

Check for colour matching capabilities

In colour critical environments, it's vital that the colour you expect is the colour you get. Make sure your device comes with advanced colour management and profiling options that enable you to emulate different output devices and control colour output. This way you can be sure your printouts come out just how you imagined, at every stage in the process.

THE XEROX ADVANTAGE

Xerox gives you advanced colour management tools and profiling options. You can create your own profiles that allow you to proof your documents to other engines, such as a printing press, web pages, a copier or a digital press. This way you can optimise the color output (e.g. saturated, cooler, warmer) at every step and eliminate surprises in the production phase.

With the addition of the Splash RPX-i workflow software you can get the professional colour management tools (e.g., ColorTuner, Colour Spot Editor and CMYK Colour Profiles) to manage the most demanding colour matching job. The Splash legacy is one that benefits the colour printing professional. Splash work flow software takes the colour image quality of the DocuColor 240/250 to new levels.

Include a variety of elements in your test pages

Try colour graphics, photo images, adjacent primary colours, large areas of solid colour, colour blends and gradients and text in various typefaces, sizes and colours.

THE XEROX ADVANTAGE

When your document includes mixed elements such as graphics, text and photos, Xerox automatically colour corrects each graphic element on the page. This ensures you get the sharpest text, brightest colours and the life-like images contained in your original file.



SECTION 2

Evaluating Colour Laser Printer-Copiers

EVALUATE IMAGE QUALITY, cont.

Use different kinds of media

With some colour printers, colour may change depending on the media you use. The quality may lessen with different paper textures, like cover stock or transparencies. And in creative environments, the last thing you want to do is reject an idea because you can't execute it properly. So test out different kinds of media to ensure consistently terrific colour output.

THE XEROX ADVANTAGE

The DocuColor 240 / 250 was made with the creative professional in mind – to expand your options, rather than limit them. This device enables you to print on a wide range of papers – up to 300 gsm – including transparency, synthetic, recycled, coated, DocuCard™ and more. And it handles media sizes as small as postcard, all the way up to A4, A3 and SRA3 sized paper.

Xerox offers the broadest portfolio of Digitally Optimised paper and speciality media under one brand, making it easy for you to maximise the capabilities of the DocuColor 240 / 250. Whether you need to create and print a customised newsletter, brochure, transparency, label, ID card, or durable document, Xerox paper and speciality media is your best choice.



Check source file compatibility

Can the printer handle all the versions of PCL® or Adobe® PostScript® that the software might produce? Some popular graphic applications depend on true PostScript compatibility for the best colour quality and most accurate proofing capability.

THE XEROX ADVANTAGE

No matter what application you're using, Xerox has you covered. The DocuColor 240 / 250 with the EFI busted controller offers true Adobe® Postscript® 3™ and PCL® emulation, so everything you print turns out the way you it expect it – wonderfully. The Splash RPX-i option also supports Adobe PostScript 3.

SECTION 2

Evaluating Colour Laser Printer-Copiers

EVALUATE SCALABILITY

Think about finishing options

Sometimes the little things can make a big impression. Such as a presentation that's neatly collated, stacked and professionally stapled. That's just one reason you should consider finishing options in your office game plan. They can make documents look great, and save you time and effort by doing finishing tasks for you...such as collating, stapling and even hole punching.

THE XEROX ADVANTAGE

With the DocuColor 240 / 250, you have two finisher options – the Advanced or Professional. The Advanced Finisher offers 50-sheet multi-position stapling and hole punching, plus stacking of up to 3000 sheets. The Professional Finisher provides even more functionality with saddle-stitched booklet making, V-fold brochure assembly, 50-sheet multi-position stapling and hole punching. The Professional Finisher can also handle up to 1,500 stacked sheets.

Consider controller options

Does your controller have ample colour management tools? Does it help your workflow, rather than complicate it? These are things you should think about. Also, take a look at the RIP speed and determine if it processes information quickly enough. Do you have the option to upgrade if you need it?

THE XEROX ADVANTAGE

The DocuColor 240 / 250 comes with a bustling EFI® Fiery® Controller that offers a 2.8 GHz Celeron® Processor for speedy processing, plus colour calibration tools, genuine Adobe® Postscript® 3™, variable information printing tools, options for densitometer support and more. With the addition of the Splash RPX-i workflow software, colour professional users can perform those demanding colour matching tasks with ease.

Xerox also offers a wide selection of world-class standalone controllers and graphic arts upgrades. These give you more colour tools, additional workflow capabilities and faster RIP speeds. It's all about meeting the needs of your specific business, and then giving you options as your business grows and changes.

Check out security features

You need to protect your and your customer's sensitive information. Determine if the system you're considering has options such as controlled access to files.

THE XEROX ADVANTAGE

Xerox provides many security options that ensure data security. And with the DocuColor 240 / 250, you are able to select the level of security you desire. The copier has a hard disk drive that can be erased under the direction of a system administrator. Plus, additional options can be employed to protect sensitive information on the controller's hard disk drive.



Finishing Options on DocuColor 240 / 250



Sort and collate



Stapling



Hole punch



Folding

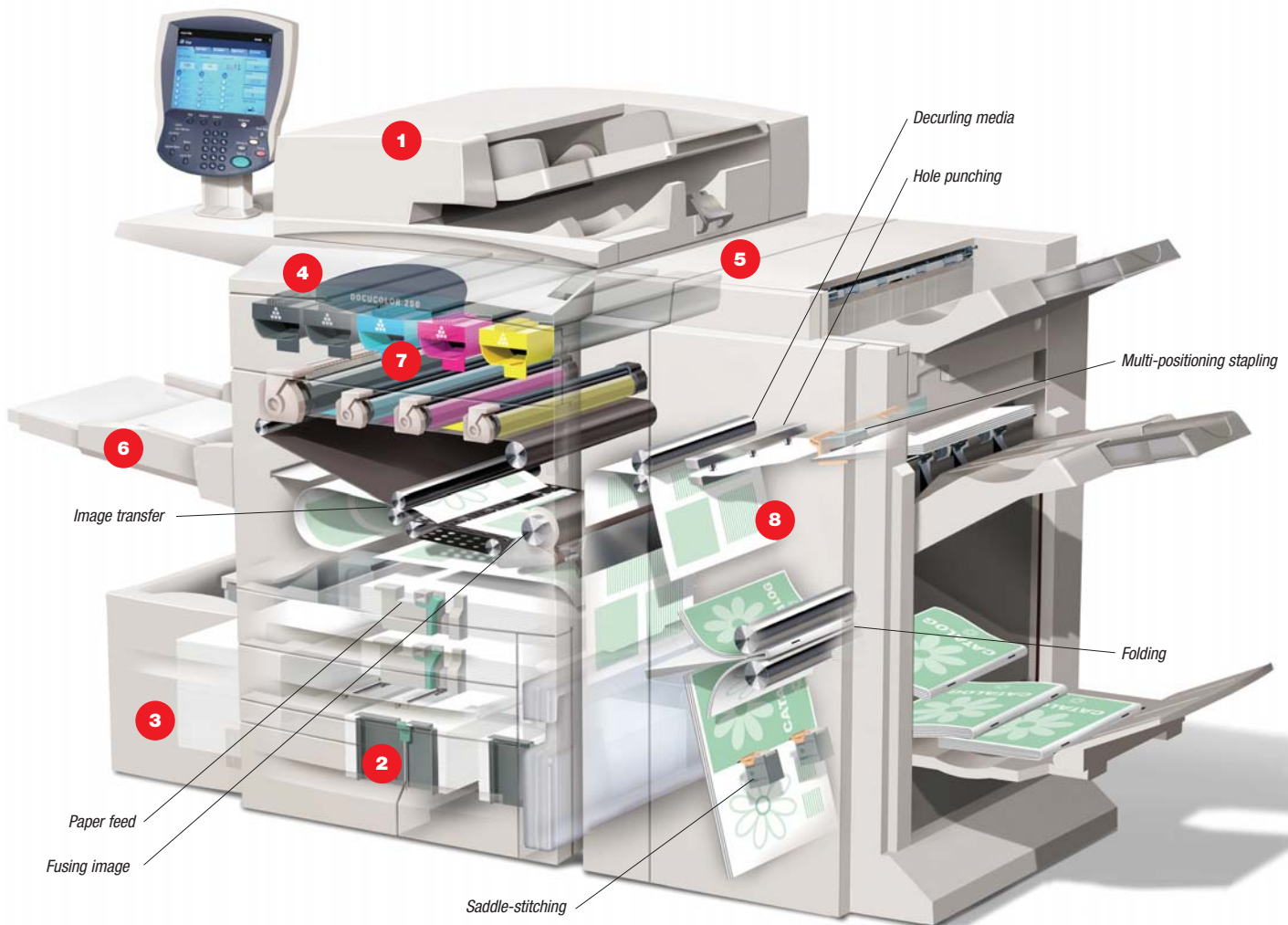


Booklet

SECTION 3

Configurations, Specifications, Part Numbers

Feature review



1 250-sheet Duplex Automatic Document Feeder (DADF) simplifies the copying and scanning of large jobs.

2 Five standard trays have a total paper capacity of 3,260! Plus, trays one and two can handle custom media. You can devote an entire tray to the speciality media you use most.

3 A choice of optional high-capacity feeders for those long job runs. Sheet size up to SRA3 just load and go.

4 Increased toner capacity. Two black toner SMart Kit™ replaceable units keep replenishment interventions to a minimum and productivity to a maximum.

5 Optional finishers (Professional Finisher shown) add the final touches to professional documents.

6 A short, straight paper path prevents jams while providing heavier media feeding capability and increased reliability. Center registered feeding results in accurate registration and less paper skew.

7 Trickle charge development system – unique to Xerox – maintains print consistency all day long. You never have to do a quality check at the eleventh hour.

8 New 2400 dpi resolution delivers excellent image clarity in both prints and copies. Plus, the device employs an automatic Charge Corotron Cleaning Assembly to maintain consistently brilliant image quality.

SECTION 3

Configurations, Specifications, Part Numbers

Configuration summary



	DocuColor 240	DocuColor 250
Speed (Colour / Black and White)	Up to 40 ppm / 55 ppm	Up to 50 ppm / 65 ppm
Duty Cycle*	Up to 200,000 pages per monthCycle*	
Average Monthly Print Volume**	10,000 to 40,000 pages per month	
Paper Handling	250-sheet Bypass Tray; Two 500-sheet A3 Paper Trays; One 870-sheet A4 Paper Tray; One 1,140-sheet A4 Paper Tray (Total 3,260 sheets)	
Paper input	Standard Optional	
Paper output	Optional	
Copy	2,000-sheet High-Capacity Feeder (A4) 2,000-sheet Oversize High-Capacity Feeder (up to SRA3)	
Pre-collation memory	Simple Catch Tray (SCT) Offsetting Catch Tray (OCT) Advanced Finisher: 500-sheet top tray, 3,000-sheet stacker tray, hole punching and multi-position stapling Professional Finisher: 500-sheet top tray, 1,500-sheet stacker tray, hole punching, multi-position stapling, V-fold booklet making, saddle-stitch booklet maker	
First-page-out time	256 MB plus 80 GB hard disk drive	
Copy resolution	As fast as 7.8 seconds colour / 4.3 seconds black and white	
Copy features	2400 x 2400 dpi	
Print	Reduction / enlargement (25% – 400%), Enhanced gloss level, Book copying / two-sided book copying, Mixed-sized originals, Image rotation, Edge erase, Mirror / negative images, Image shift, Booklet creation, Multi-Up, Annotation and set numbering, Covers, Poster mode, Repeat Image, Build Job, Delete inside / outside editing	
Print resolution	2400 x 2400 dpi	
Scan	200 x 200 dpi, 300 x 300 dpi, 400 x 400 dpi, 600 x 600 dpi	
Scan resolution	Foreign Interface Kit, Feature Information Board, Convenience Stapler	
Other Options		

*Duty Cycle - Maximum volume capacity expected in any one month. Not expected to be sustained on a regular basis.

**Average Monthly Print Volume (AMPV) - Expected regular monthly print throughput.

SECTION 3

Configurations, Specifications, Part Numbers

Supplies and accessories

CONSUMABLES AND ROUTINE MAINTENANCE ITEMS

DESCRIPTION	DETAILS	PART NUMBER
Toner Cartridges (Standard Capacity*)	Black	006R01219
	Cyan	006R01222
	Magenta	006R01221
	Yellow	006R01220
Waste Toner Bottle	50,000 Impressions	008R12990
Black Drum Cartridge	150,000 prints	013R00602
CMY Drum Cartridge	65,000 prints	013R00603
Fuser Assembly (220 V)	Heat Roller, Fuser Belt, NC sensor, Thermostat, Lamp and Baffle 160,000 Impressions	008R12989
CC Assembly for Black Toner Cartridge		013R00604
Staple Cartridge	For use with Finishers	008R12964
Staple Refill	For use with Finishers and Convenience Stapler	008R12941
Staple Cart	For use with Professional Finisher Booklet Maker	008R12925

* Yields are estimated on 5% area coverage on an A4 page.

OPTIONS/UPGRADES/ACCESSORIES

DESCRIPTION	DETAILS	PART NUMBER
High Capacity Feeder	2,000-sheet capacity (A4)	097S03304
Oversize High Capacity Feeder	2,000-sheet capacity (up to SRA3)	97S03574
Advanced Finisher	1,000-sheet capacity	097S03306
Professional Finisher	1,000-sheet capacity	097S03305
Mobility Plate		098S04320
Convenience Stapler Kit (220 V)		098S04888
Foreign Interface Kit		098S04753
Offsetting Catch Tray (OCT)		497K02420
Simple Catch Tray (SCT)		

Recommended Media

Xerox offers the broadest portfolio of digitally optimised paper and speciality media under one brand, making it easy for you to maximise the capabilities of your Xerox DocuColor 240 / 250 and generate new revenue opportunities. Whether you need to create and print a customised newsletter, brochure, transparency, label, ID card, or durable document, Xerox paper and speciality media is your best choice.



SECTION 3

Configurations, Specifications, Part Numbers

Specifications

PHYSICAL DIMENSIONS

DIMENSION	BASE DEVICE	BASE DEVICE WITH FINISHER
Height	1369.2 mm	1369.2 mm
Width	1573.6 mm	2096 mm
Depth	921 mm	921 mm
Weight (unpacked)	228 kg	

POWER

FUNCTION	POWER USED
Continuous printing	2112 VA
Low Power mode	≤ 300 watts
Sleep mode	≤ 95 watts

PRINT QUALITY MODES

MODE	DESCRIPTION	MAXIMUM SPEED
Standard	Normal default printing mode	Up to 50 ppm colour / 65 ppm black and white (DocuColor 250) Up to 40 ppm colour / 55 ppm black and white (DocuColor 240)
Enhanced Gloss	Increase gloss level for high-quality image printing/copying	Up to 25 ppm colour / 33 ppm black and white

SECTION 3

Configurations, Specifications, Part Numbers

Specifications for the EFI® Fiery® Network Colour Server on the Xerox DocuColor 250

Processor	Intel® Celeron® 2.0 GHz (minimum)
Memory	512 MB
Hard Disk Drive	80 GB
Controller Operating System	Linux
Network Connectivity	Ethernet 10/100/1000 Base-T Autosensing
Page Description Languages	Adobe® PostScript® 3™ (v3016) PCL 6C (emulation)
Print Specifications	Print resolution 2400 x 2400 dpi Pages per minute Up to 40 ppm colour, 55 ppm black and white (DocuColor 240) Up to 50 ppm colour, 65 ppm black and white (DocuColor 250) First-print-out time As fast as 7.8 seconds colour, 4.3 seconds black and white
Scan Resolution	200 x 200 dpi 300 x 300 dpi 400 x 400 dpi 600 x 600 dpi
Maximum Image Size	Print Maximum Area – 323 x 480 mm Maximum Guaranteed – 317 x 480 mm Scan Maximum Area – 297 x 432 mm Maximum Guaranteed – 297 x 432 mm
Print Drivers	<i>Fiery Driver 2.0 (Bi-Directional) support for:</i> Windows® 2000 Windows® XP Windows® 2003 Server Mac OS® 9.2 / 10.2.3 and later
Driver Certification	WHQL Certified
Fiery Utilities / Features	<i>(enabled on PC and Apple Operating systems)</i> Command WorkStation 4.x EFI ColorWise Fiery Downloader Fiery WebTools Fiery Remote Scan FreeForm for Variable Data Printing Spot-On Colour Auto Trapping
Calibration	ColorCal® (standard) X-Rite® DTP 32 Series II Densitometer (optional)
Document Management	RIP while print Continuous Print Face-up and Face-down printing Fiery Scan and Scan-to-Job templates Fiery Driver 2.0 based booklet creation
Standard Color Profiles	Printer's default SWOP-Coated DIC Euroscale
Fonts	136 Adobe fonts 80 PCL 6C (emulation) fonts
Options	X-Rite DTP 32 Series II Densitometer Secure Disk Erase 512 MB Memory Upgrade (requires v1.1 Fiery software) EFI Colour Profiler EFI Impose 2.5 Splash RPX-i workflow software
Security	Secure Disk Erase Scan to mailbox / Job template password
Power Requirements	Controller power supplied by the DocuColor 240 / 250 engine. No additional power service is required. 220 – 240v – 10 Amp

SECTION 3

Configurations, Specifications, Part Numbers

Information sources

DocuColor 240 / 250 Training and Information CD (packaged and shipped with the product) is an interactive method to instruct the user on how copy and print operations can be accomplished.

System Configuration Pages

Printed at full system power on sequence.

Support

There is additional help, software and driver updates available at www.xerox.com/office/support

Web Links

Xerox provides many resources to help you learn more about your Xerox printer-copier. Use these web sites to obtain information about your Xerox product:

- To link to product and supplies information, download printer drivers, view documents, and access support information: www.xerox.com/office
- To access the troubleshooting knowledge base used by Xerox Customer Support staff: www.xerox.com/office/infoSMART
- To find your local sales and support center: www.xerox.com/office/contacts



Questions? Comments? Problems?

If you have any questions or issues with your printer-copier, please contact your Xerox sales representative or visit us on the web at www.xerox.com/office

