

XEROX®

Technology | Document Management | Consulting Services

DocuColor® 12



EFI Fiery® X12e
Network Color Server

Built to compete

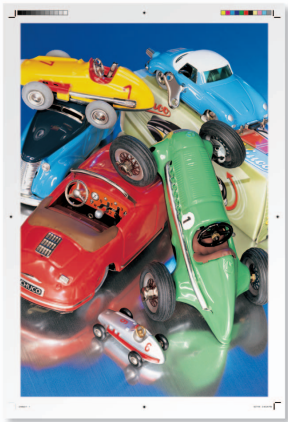


Paired for performance:

Xerox DocuColor 12 and Electronics for Imaging Fiery X12e Controller

How do you measure performance? Color fidelity. RIP speed. Ease of use. Versatility. Control.

When paired with the Xerox DocuColor 12 printer-copier, the EFI Fiery X12e color controller delivers on all counts. With advanced color management technology, an architecture optimized for document printing and intelligent workflow tools. It's an ideal solution for business and color-intensive environments where performance directly impacts bottom-line results.



ColorWise 3.0®

Getting the color right is the primary job of any color controller. The Fiery X12e controller features the latest Fiery color management software—ColorWise 3.0.

For basic color users, getting brilliant color has never been so easy. Printing to the Fiery/DocuColor 12 is like printing to an inkjet—with the speed and paperhandling options of a color copier.

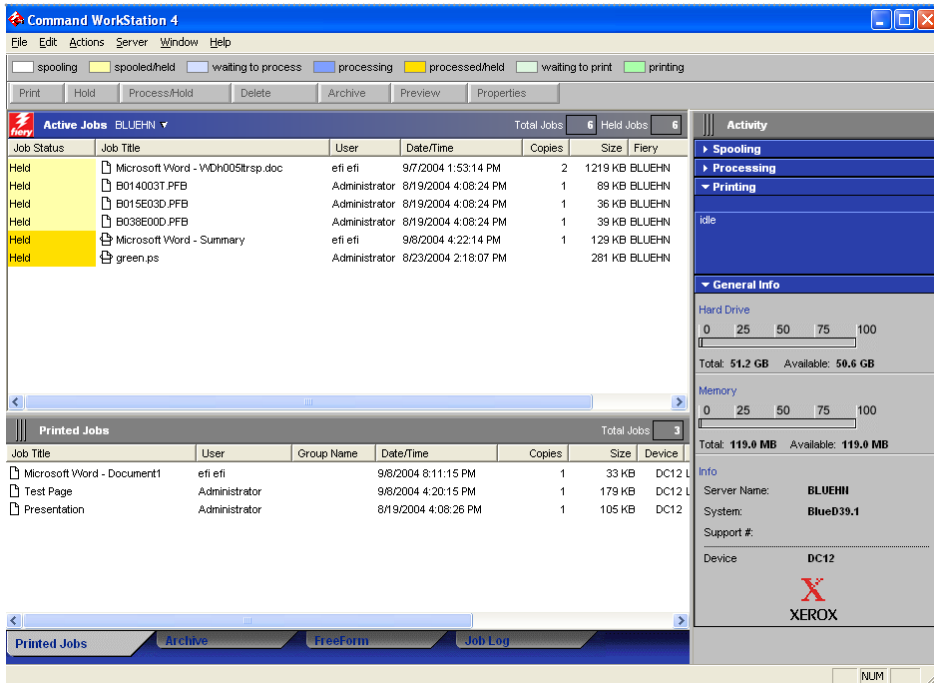
For color experts, ColorWise offers a suite of new color management tools. With point-and-click simplicity, you can calibrate your DocuColor 12 printer-copier to specific substrates; edit simulation or output profiles with the Color Editor; and

download ICC profiles via the Profile Manager. A new feature called RGB Separation lets you convert RGB data to device-specific CMYK, letting you proof an unlimited range of options—using the power of the Fiery instead of your desktop. For graphic artists who design for CD-ROM and the Internet, as well as traditional offset, RGB Separation can save time and valuable disk space. In short, you have an amazing amount of control over your DocuColor 12 output, plus the ability to accurately predict/proof what your job will look like.

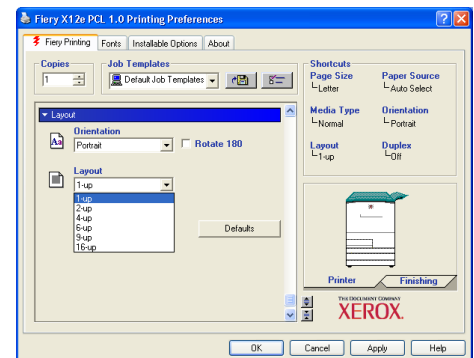
Fiery System 5.5 Architecture and NetWise™ 2.0

The new Fiery PowerWise architecture combines industry-leading technologies like Intel processors and Windows XPe with EFI-designed technologies in a custom-built color controller. This allows full optimization of copier engine capabilities, while adding additional features such as color and job management, network printing and scanning functions.

EFI has always been known for its ability to seamlessly connect you to your digital copier. The Fiery X12e controller builds on that reputation with NetWise 2.0 utilities, making installation, configuration and maintenance of your DocuColor 12 printer-copier easier than ever before.



Intuitive interface provides easy-to-use and extensive print job and queue management features.



Fiery FreeForm®

This powerful variable information printing software (optional) enables you to produce customized color output. This one-to-one color printing solution enables you to provide extra value and impact to your marketing communications.

EFI Color Profiler

The EFI Color Profiler is an optional, client based application that enables the creation of ICC profiles with CMYK digital printers (ICC profiles accurately describe the color response of printers and can be used in PCs, Macintosh® systems, and EFI servers). The Profiler appeals to both the novice and advanced user, and is optimized for use with Fiery X12e. The Color profiler includes the EFI Spectrometer—a fast, hand held, color measurement device. The EFI Spectrometer can also be used as a highly accurate densitometer, measuring and compensating for the day-to-day fluctuations in printing output.

Fiery Driver®

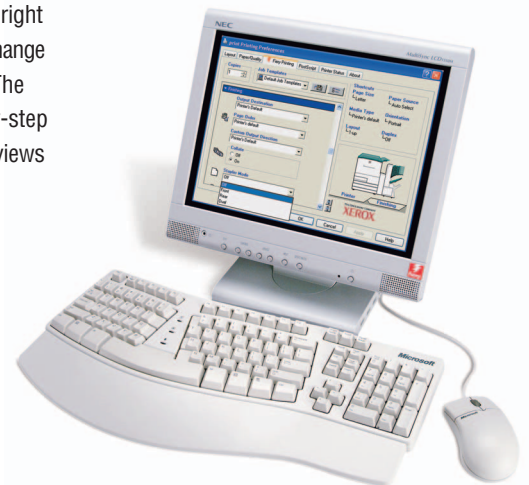
The Fiery Driver is a graphical print driver interface designed to make DocuColor 12 printing easier and more intuitive. When you click print from your PC, you gain access to all of the DocuColor 12 functionality, with a visual presentation of available options.

Job Management

Centralized print job management is simple. Fiery Command WorkStation™ 4.1 software sets the standard for conveniently supervising and manipulating digital print jobs. This advanced controller interface enables easy queue management and RIP control, letting you manage incoming jobs for release later or for processing as they come in. You can store frequently printed documents right on the server to make reprints a breeze, and change job parameters with the click of a button. The intuitive interface guides new users step-by-step through every job process and provides previews that eliminate guesswork.

Connect to the Color Opportunity

For more information on how the EFI Fiery X12e can help you get the most out of your Xerox DocuColor 12 printer-copier, contact your Xerox representative, call **1-800 ASK XEROX**, or visit our Web site at www.xerox.com/office.





Get color beyond your expectations from the Fiery X12e Network Color Server and your DocuColor 12.

For more information, contact your Xerox representative, call 1-800 ASK-XEROX, or visit us at:

www.xerox.com/office

EFI FIERY X12e SPECIFICATIONS

PRINTER/COPIER SUPPORTED

- Xerox DocuColor 12

INPUT/OUTPUT SPECIFICATIONS

Print Resolution

- Continuous tone 600 x 600 dpi
- ECT compression

Page Description Languages

- PostScript Level 3
- PDF native
- PCL 5ec (emulation)

Fonts

- 136 PostScript fonts
- 45 PCL fonts

USER EXPERIENCE

Controller Interface

- Fiery LCD interface
- Fiery Advanced Controller Interface (optional)

Document Management

- Command WorkStation software

Utilities

- WebTools

User Interface

- Fiery Driver—all X12e/DocuColor features are available for PostScript and PCL (emulation)

Color Management

- ColorWise 3.0—Calibrator
- ICC/ICM Profile Manager
- X-Rite or EFI Densitometer

CONNECTIVITY (MULTIPLE PROTOCOL AUTOSENSING)

- 10Base-T/100Base-T autosensing at bootup

Supported Protocols

- TCP/IP
- Novell IPX/SPX 4.x (NDS or Bindery)
- SMB (Microsoft peer-to-peer)
- AppleTalk (PAP)

Topologies

- 802.2, 802.3
- Ethernet II, Ethernet SNAP

Print Drivers

- Windows 2000, XP
- Mac OS 9, OS 10
- Unix printing (lpr/lpd only)

CONTROLLER SPECIFICATIONS

- 1 GHz Intel Pentium III (minimum)
- 256 MB memory (minimum)
- 60 GB hard drive (minimum)

WEIGHT

- 38.7 lbs. (17.6 kg)

DIMENSIONS

Server

- 15.5 in. (39.4 cm) height
- 7.5 in. (19.1 cm) width
- 14.5 in. (36.8 cm) depth

POWER REQUIREMENTS

- 100-125/200-240 VAC RMS single phase, automatically configured

OPTIONS AND UPGRADES

- 256 MB memory upgrade
- Fiery Advanced Controller Interface (FACI)
- FACI Furniture
- EFI Color Profiler
- X-Rite Densitometer
- EFI Densitometer

REGULATORY AGENCY APPROVALS

- FCC Class B



EFI Fiery X12e Network Color Server shown with optional server stand