

XEROX®

Technology | Document Management | Consulting Services

DocuColor® 12



Color

EFI Splash® G640
Network Color Server

accurate digital color above and beyond your expectations



When it comes to producing your customers' color-critical documents, you can't settle for anything less than perfect. You need the best there is—the best color server and the best digital print engine—to make sure you consistently produce superior print quality. You also need a seamless workflow and enhanced productivity so that you have a high performance system in place for printing color-critical proofs and high-quality short run jobs.

*The Xerox DocuColor 12 and the
Electronics for Imaging Splash G640
make it happen.*

impressive features...

Screened DMax

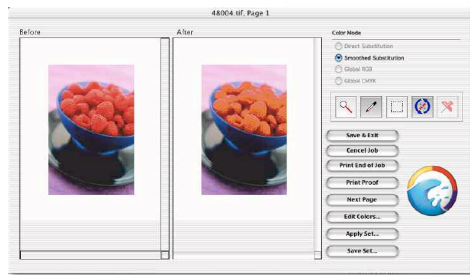
Now, with this exclusive feature, the Splash G640 color server provides a capability that no contone proofer can. In industries like newspaper publishing, you can now show customers proofs that more accurately reflect what will ultimately be printed on press.

Calibration designed specifically for screened output delivers DMax output as a solid, accurate patch.

Color Tuner

Save time with the Color Tuner feature. It allows you to perform last minute color changes at the server, eliminating the need to go back to square one and manipulate the source files.

- **Select PANTONE® colors as replacement colors.** With this feature, you now have the ability to effectively communicate transferrable PANTONE colors to your customers. They'll better understand the color you select and be able to use a PANTONE color palette to validate the color you have modified.
- **Change only selected objects.** With the Splash G640, you can change one object or area in a document without affecting the rest. Modify spooled PostScript files without recreating the PostScript.
- **Edit individuals colors at any time.** The Splash G640 allows you to edit individual colors, even after you have made global changes in the PostScript file. The result? Better color accuracy.



Selectable Copier Screening

The DocuColor 12 and the Splash G640 Server allow you to select among copier screenings to print color-accurate and dot-accurate proofs. Various settings allow you to:

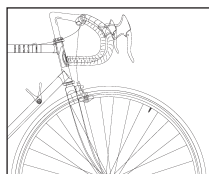
- Show accurately simulated dots.
- Simulate the rosette pattern of a lithographic press.
- Faithfully reproduce fine lines.



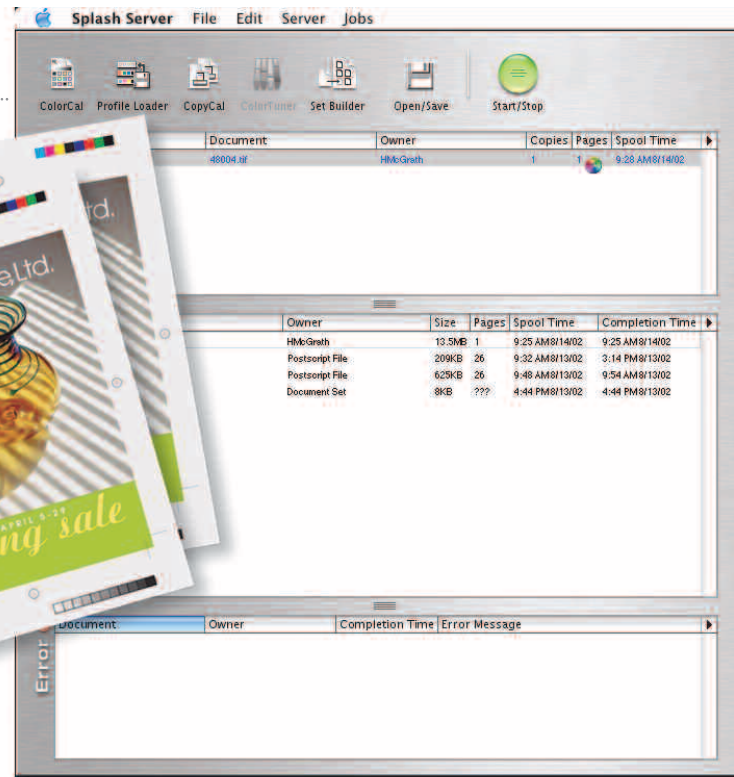
200 line



200 dot



600 line



OS X look, feel, and ease

The Splash G640 Server combines elegance and increased power. Designed using the Macintosh OS X look and feel, the Splash user interface is more intuitive than ever.

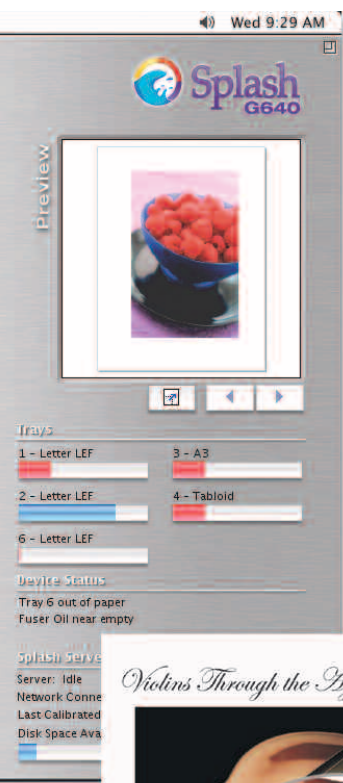
The toolbar gives easy access to all of the Mac's most powerful features.

Color-coded status bars provide a glimpse into each of the printer's trays. Green, yellow, and red indicate tray statuses that range from 75% to 25% full. You can avoid running out of paper and maintain peak productivity.

Hot Folders

Hot Folders streamline the digital printing process and automate a production workflow. Each Hot Folder can perform specific job options on any PostScript, TIFF, EPS, PDF, or DCS 2.0 file. They optimize the printing and finishing process and increase your enterprise efficiency.

The Splash G640 supports an unlimited number of Hot Folders. They are standard Mac OS folders but can be shared with operators running the Windows platform. So everyone, regardless of environment, can tap into the power of Splash G640's Hot Folders.



Set Builder

Turn a mix of separate jobs into high-quality, high-impact, high-profit documents.

Set Builder allows you to quickly and easily create new documents from jobs already at the Splash G640 Server. Recombine jobs, collate, duplex, staple, rotate, and prepare jobs for offline finishing—the result is impressive finished documents.



Secure Access

With Secure Access, your system administrator can tailor each user's or group's level of access for printing. You can reduce costs and increase the productivity of the DocuColor 12 by controlling access to the printer and ensuring confidential material remains confidential.

PDF 1.4 Support

The Splash G640 provides Acrobat 5 support for better printing on transparencies and printing of password protected PDF files. With this feature, you have the flexibility to accept and print more jobs on the DocuColor 12.

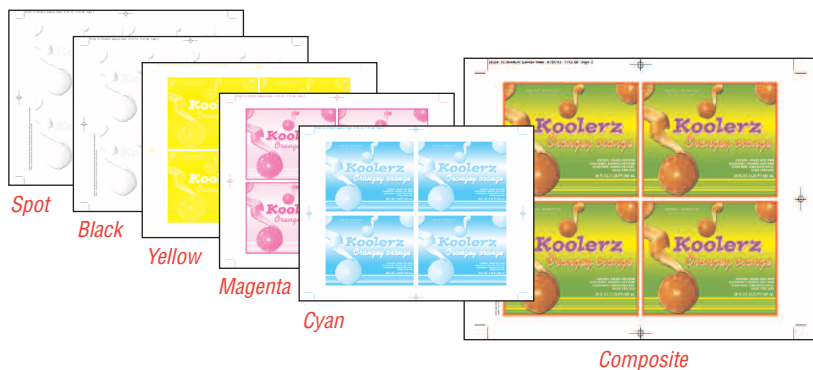


Print Information

Print information provides you with a mechanism to effectively communicate to your customers any information for proofing revision control—things such as proofing dates, modifications made to the PostScript file, and version numbers.

CMYK Output Profiles

Your color has never looked better than it does with the Splash G640 Server. And getting that great color has never been faster. The Splash G640 allows you to download CMYK output profiles and select the right profile for the specifications of each job. Printing a job on special paper? Download and select a profile perfectly matched to that paper. The Splash G640 uses the selected profile without having to change the color sync or customer profiles for each job. You save time and get the great Splash color you expect.



Composite Separation Printing

With the Splash G640, you don't need the source file, images, or fonts to validate registration, color separations, or spot colors. The Splash G640 allows you to verify color, trapping, overprinting, and knock-outs in composite separation files.

If they need adjustment, other Splash G640 features such as the Color Tuner boost productivity by allowing you to make changes right at the RIP without altering the original file.

PRINTER/COPIER SUPPORTED

- Xerox DocuColor 12 Printer/Copier

PRINT SPECIFICATIONS**Print resolution**

- 600 x 600 x 8 dpi full contone/duplex printing for all supported page sizes

Scan resolution

- 400 x 400 x 8 dpi

PAGE DESCRIPTION LANGUAGES

- Adobe® PostScript® 3™
- PDF Native
- Compatible with PDF-X, CT/LW, PSD

COLOR MANAGEMENT

Monitor matching, Mixed TIFF/EPS, Spot color workflow, Color Sync 2.6 compatible, Mixed RGB/CMYK, Press (SWOP, Euroscale, SNAP, TOYO, DCI Simulation, Import RGB, CMYK, and Output Profiles).

CALIBRATION

Color sets, ColorCal, Random patches, Calibration for unique stocks, expert mode, AutoGrey.

MAXIMUM PRINTING AREA

Supports full bleed printing on oversized media

Paper Size	Maximum Printable Area
12 x 18 in.	299 x 451 mm (11.77 x 17.76 in.)
SRA3	303 x 441 mm (11.93 x 17.36 in.)

EASE OF USE**Graphic user interface**

Previews of RIPped jobs, Customizable status windows, Drag and drop management, Full job recovery, Active queue job management.

CUSTOM DRIVER

Provides application-independent color management.

DOCUMENT MANAGEMENT

Collation, Reverse order printing, Continual print, RIP-while-receive, DCS 2.0, EPS, PDF, PostScript 1.4, TIFF, and TIFF-IT, PDF-X, CT/LW, PSD direct print, remote job manipulation via Apple personal Web server are all supported.

Hot Folders for Mac, Secure Printing, Set Builder, Imposition, Secure Access, Print Information.

PREPRESS FEATURES

Preflight, Progressives, Custom CMYK profiles, User-definable screening, Control strip, Auto-trapping (application independent), Dynamic edge smoothing, Custom page size, Separations, Spot color separations, Screen DMax, Selectable copier screening, Spot Color Editor, Color Tuner.

FONTS

- 136 Adobe fonts plus two multi-master fonts included.

NETWORK CONNECTIVITY

- Ethernet 10/100/1000 Base-T

NETWORKING PROTOCOLS

- TCP/IP
- AppleTalk™
- Novell 5.1 and 6.0 (NDPS and Unix Printing Services)
- Unix and Windows

SUPPORTED DOCUCOLOR 12 OPTIONS

- All DocuColor 12 options are supported

PRINT DRIVERS

- Macintosh OS X™
- Macintosh OS 9®
- Windows NT 4.0®
- Windows 95/98/ME®
- Windows 2000®
- Windows XP®

G640 SERVER CONFIGURATION

- 1.6 GHz, Power Mac G5 (Single only)
- 80 GB Ultra ATA HDD (minimum)
- 17" Apple Flat Panel Monitor
- Combo DVD/CD-RW Drive
- 768 MB Host Memory
- Requires 2 available PCI slots

MINIMUM COMPATIBLE HOSTS FOR SPLASH BOARD KITS

- Blue G3 (400 MHz or faster) or Gray G4 or single G5 CPU
- Macintosh OS 10.3 or higher (must run in Mac Classic mode 9.2.2)
- 10 GB Hard Disk Drive
- 768 MB Host Memory
- 600 x 800 dpi resolution monitor
- DVD, CD-RW or CD Drive
- Requires 3 available PCI slots

REGULATORY AGENCY APPROVALS FOR SYSTEM

- US FCC Class A
- Canada ICES-003 Class A
- EU CE Class A
- C-UL

POWER REQUIREMENTS**Power Supply**

- With automatically switching 110v or 220v

CPU Power Consumption

- 600W maximum

Monitor Power Consumption

- 150W maximum

DIMENSIONS**Server**

- 17.0" (43.2 cm) high x 8.9" (22.6 cm) wide x 18.4" (46.7 cm) deep, allow 6" (15.2 cm) in back for cables

Monitor

- 17" (43.2 cm) high x 16.1" (41.0 cm) wide x 6.7" (17.2 cm) deep



EFI Splash G640 Network Color Server

