

Xerox® ColorQube®
8580
Letter / A4
Colour Printer



Xerox® ColorQube® 8580 Colour Printer

Evaluator Guide

About this Guide

This Evaluator Guide introduces you to the Xerox® ColorQube® 8580 colour printer, explains its key features and performance advantages and provides guidance throughout your evaluation process.

Section 1: Introducing the ColorQube 8580 Colour Printer

- 3 Product Overview

Section 2: Evaluating Colour Printers

- 4 Evaluation Overview
- 5 Ease-of-use
- 6 Environmental Impact
- 8 Productivity
- 9 Installation and Deployment
- 10 Security Capabilities
- 11 Reliability

Section 3: Technical Specifications, Supplies and Support Resources

- 12 Configuration Summary
- 13 Specifications
- 14 Supplies
- 15 Support and Additional Information Sources

Section 1: Introducing the Xerox® ColorQube® 8580 Colour Printer

Product Overview

Continuing the exclusive Xerox tradition of advanced cartridge-free Solid Ink, the ColorQube 8580 colour printer is a powerful, no-fuss and waste-conscious printing solution that's simple and highly productive with the advantage of superior colour output.

Your Office, Greener

- **Less waste, less impact.** Packaging for the printer and Solid Ink sticks helps you create up to 90 % less waste, lower Life Cycle energy demand and a smaller carbon footprint than comparable laser printers.
- **Earth Smart print driver settings.** Easy-to-use print-driver gauge allows you to choose the most environmentally conscious print settings.
- **Optimise energy usage.** Intelligent Ready technology learns your work group's usage patterns and moves to low-power mode when you're least likely to use it.
- **Bundled GreenPrint software.** Use the standard GreenPrint tool to help you print only the pages you want for reduced paper and ink usage.

More Colour Performance

- **Incredible detail and halftones.** Xerox® 2400 FinePoint® print resolution ensures exceptional print quality.
- **Always superior colour.** Solid Ink gives your documents rich, vibrant colours on all media, including recycled paper.
- **Wide media range.** Print on everything from plain paper to labels, envelopes, card stock, business cards and glossy media.
- **The colours you expect.** PANTONE® approved solid-colour simulations and Xerox® colour correction technology deliver results that always match your expectations.

- **More printing for longer.** A high monthly duty cycle of up to 85,000 images means you'll have a reliable colour printer for many years to come.
- **Print when you're ready.** A first-page-out-time as fast as 5 seconds means in most cases your print job's ready by the time you walk to the printer.
- **Accurate results, every time.** True Adobe® PostScript® 3™ and PCL 5c emulation print languages ensure your jobs are consistently accurate.
- **No time lost for colour.** The ColorQube 8580 prints black and white and colour at the same fast speed.
- **Intuitive colour correction.** The Colour By Words feature lets you select desired colour modifications from a simple drop-down list.

The Right Fit for any Environment

- **Choose productivity.** Add more memory to enable a variety of security and time-saving capabilities with a choice of two productivity kits.
- **Easy expandability.** Adding additional media trays increases total media capacity up to 2,200 sheets for periods of high workload and enables multiple tray sources for your diverse office printing needs.
- **Small footprint.** The ColorQube 8580 fits almost anywhere in your work space, whether on your desk or in a central location.
- **Total flexibility.** Get full compatibility with Windows®, Mac® and Linux® environments.

- **Save shipping costs and storage space.** Compared to toner, Solid Ink's smaller packaging costs less to ship and is small enough to fit in a desk drawer.
- **Apple® AirPrint.** Simplify printing of email, photos and important office documents directly from your Apple products with no drivers to install.
- **Mopria® certified.** Mopria certification simplifies the mobile printing experience for tablets and smartphones to many printing devices, including the ColorQube 8580.
- **The optional Xerox® Wireless Print Solutions Adapter** seamlessly connects your Xerox® printer or multifunction printer to modern mobile and desktop workflows, regardless of your office environment. For more information, visit www.xerox.com/WPSA.



Section 2: Evaluating Colour Printers

Evaluation Overview

How do you know which colour printer is the right fit? Based on continuous study of our customers' requirements, Xerox recommends that you consider using the following criteria when evaluating which work group- or department-class colour printer to purchase for your office.

This section examines each of the above evaluation criteria in greater detail, covering the specific features and performance attributes you should look for in a work group- or department-class colour printer. When the same criteria are used to evaluate every printer under consideration, you'll see how the Xerox® ColorQube® 8580 colour printer excels against other manufacturers' products.

Ease-of-use

Environmental Impact

Productivity

Installation and Deployment

Security

Reliability



Xerox® ColorQube® 8580DT shown with 2 additional 525-sheet paper trays and System Cart with Storage Drawer.

Section 2: Evaluating Colour Printers

Ease-of-use

When you purchase a new colour printer and deploy it into your environment, ease-of-use is a critical factor in how well your employees adapt to the new device. How easy will it be for your employees to load supplies and keep the device running? Look for features that contribute to reliability and availability. Lastly, the user interfaces need to be well designed to help your employees maximise productivity.



How the Xerox® ColorQube® 8580 Exceeds the Ease-of-use Requirement:

Consumable Supplies

It doesn't get any easier than Solid Ink. Like loading a stapler, simply open the printer and drop the ink into its corresponding slot. The inks are keyed to avoid loading into the wrong slot, and the cartridge-free design allows the inks to be topped off before the printer runs empty, without any workflow interruption. Solid Ink sticks are safe to handle and spill free – there is nothing to smudge your clothes.

Reliability Features

The ColorQube 8580 includes a variety of features that help maximise the availability and reliability of the device, ensuring you won't have to wait for the printer to get your work done.

Intelligent Ready:

- System tracks your office usage patterns, warming up when your workday starts and going to sleep when your workday ends.

Xerox® PrintingScout®:

- Sends an automatic alert to your computer when attention is needed to complete a print job.
- Includes graphic instructions on how to resolve the issue, helping you get back up and running as quickly as possible.

Easy Interface

The ColorQube 8580 utilises an interface designed to help your employees to get the most out of the printer – whether they are programming a print job, managing system settings, or administering a fleet of network devices.

Front Panel Interface:

- Convenient access to regularly used features and settings, with easy access to more advanced features through the LCD display.
- Ink levels are reported in real time by colour on the front panel and via the web.

Print Driver Interface:

- Intuitive print driver interface with easy access to commonly used features, and tab-based access to advanced programming features.

Management Tools:

- Xerox® CentreWare® IS – an embedded web server for employees and administrators to manage settings and get current system status.
- CentreWare Web – a web-based utility that simplifies management of network devices.
- Context Based Restrictions – a management feature that enables administrators to define how users print. For example, all users or specific users automatically print email messages in black and white, all Word documents print in duplex mode, and some groups automatically print from assigned paper trays. After parameters are set by the administrators at the device level, the print drivers reflect the printing capabilities for each user.

Colour By Words: Unique Colour Control

Have you ever wanted to change the colour of one object or area in a printout without affecting the rest of the page? With the Colour By Words feature there is no need to go back to square one and manipulate source files. You simply select the desired colour modifications from a drop-down list, and Colour By Words will adjust your printout.



Original photo not right? Use the Colour By Words drop-down list and choose “yellow-green colours a lot more green,” and “red colours a lot more saturated.” Picture-perfect results.

Section 2: Evaluating Colour Printers

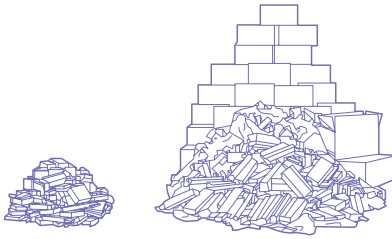
Environmental Impact

How does a colour printer put you on a path to a greener workplace?

Environmental impact can be assessed in a variety of ways. Does it have a lower total carbon footprint over the product lifecycle? Does it produce less waste? Can you get consistent image quality on environmentally friendly media?

Solid Ink Waste vs. Laser Waste

Cartridge-free Solid Ink is a true consumable; no empty toner cartridges to dispose or recycle. The ColorQube 8580 produces **90 per cent** less waste during use than a comparable laser device.



Solid Ink: 19 lbs; Laser: 246 lbs; Total waste produced from printing 4,000 pages per month for 4 years.

How the Xerox® ColorQube® 8580 Exceeds the Environmental Impact Requirement:

Energy usage is only a small part of a product's total impact to the environment. Experts agree that a product's carbon footprint is a more complete measure of its cradle-to-grave impact on the environment.

Cartridge-free Solid Ink sticks avoid the excessive packaging of toner cartridges. That means fewer resources are used and less energy is invested in manufacturing and transportation. An independent 3rd party reviewed the life-cycle analysis for the ColorQube 8580 from manufacturing to end of life. The results? 90 per cent less waste in your office and a smaller carbon footprint across the product life cycle*.

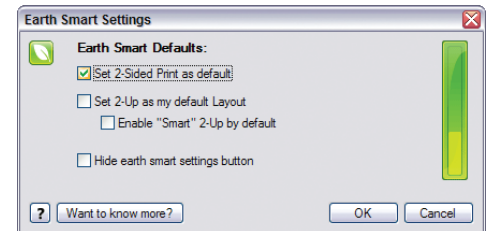
Solid Ink stick packaging is made from post consumer waste that can be recycled locally where options are available. Compared to the multiple imaging units required throughout the life of a typical xerographic device, the ColorQube 8580 has only one customer replaceable component – a long-life Page Maintenance Kit with an average yield of 30,000 prints. Naturally, it can be recycled through the Xerox Green World Alliance (www.xerox.com/gwa).

The Intelligent Ready feature on the ColorQube 8580 learns your work group's usage patterns and moves to low power mode when you're less likely to need it and restores to print ready level when your office is busy.

Because Solid Ink produces brilliant colour on recycled and other environmentally friendly paper – media that other printing

technologies have trouble with – the ColorQube 8580 enables you to make the switch to recycled paper to help meet your company's sustainability initiatives without sacrificing quality. The device also comes standard** with two-sided printing, allowing you to cut your paper usage in half.

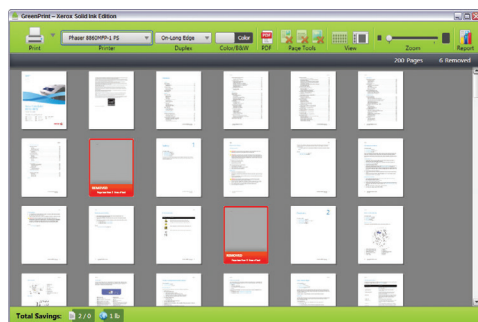
The ColorQube 8580 print driver includes Earth Smart settings, a new feature that allows users to choose default settings that encourage sustainability practices such as duplex print and draft mode.



The ColorQube 8580 also includes standard GreenPrint software, which automatically detects unnecessary pages, such as those with only a web address or a meaningless picture, and lets you select the pages you actually need to print, helping you reduce paper and toner usage. There's even a counter that keeps track of the number and total weight of your conserved pages.

* Cartridge-free Solid Ink: Less to manufacture, no empty toner cartridges to dispose or recycle, and less storage space required than comparable laser devices. According to Life Cycle analysis, Solid Ink printers produce 90 per cent less waste during use than comparable laser devices.

** 8580DN and DT configurations only.



The GreenPrint tool's intuitive user interface.

Sustainability is not just a nice-to-do at Xerox. We view it as a way of doing business, not as a cost of doing business. In fact, Xerox focused on environmental performance and sustainability long before it was popular to do so.

Consider:

- In the 1980s Xerox was the first company to introduce energy-saving power-down features on its equipment, and the first to make two-sided printing a standard on its systems, significantly reducing paper use.
- In 1997, Xerox was an early adopter of ISO 14001, an international standard for environmental management. An early adopter of the new standard, Xerox certified all its major manufacturing sites within a year of the standard's development.

Xerox continues to use innovation and leadership to drive environmental performance through its value chain:

- Since 1991, more than 2 billion pounds of waste have been diverted from landfills through our Product Take-Back and Recycling Programme.
- In 2003, Xerox joined the US EPA Climate leaders programme and pledged to cut greenhouse gas emissions from worldwide operations by 10 per cent from 2002 to 2012. Xerox reached that goal six years early, achieving an 18 per cent reduction from the 2002 baseline by the end of 2006. Xerox has set a new goal to reduce total greenhouse gas emissions 25 per cent by 2012.
- Xerox offers environmentally responsible choices for paper and media such as recycled media with up to 100 % post-consumer recycled content and paper that adheres to internationally recognised standards for sustainable forestry management.

Learn more at:
www.xerox.com/environment.

Section 2: Evaluating Colour Printers

Productivity

In addition to actual print engine speed, consider the factors that affect overall throughput. Does the device produce colour print quality that exceeds expectations? Can printer functions be monitored from users' desktops and/or at the device?

How the Xerox® ColorQube® 8580 Exceeds the Productivity Requirement:

Speed

The ColorQube 8580 Colour Printer has a first-page-out time as fast as 5 seconds, so users won't have to wait long for their jobs.

Image Quality

Exclusive Xerox® Solid Ink produces outstanding colour print quality, with natural vibrancy, glossiness and consistency on virtually any media, including recycled paper. The ColorQube 8580 delivers Xerox® 2400 Finepoint® resolution in High Resolution/Photo mode for exceptionally detailed text and images.

To ensure that printed output meets users' high expectations, Xerox also delivers multiple Page Description Languages (PDLs) including Adobe® PostScript® 3™ and PCL® 5c emulation.

Network Performance

Performance isn't limited to raw document feeds and speeds. Every ColorQube 8580 easily handles large, complex print jobs thanks to the device's high-performance 1 GHz processor.

The ColorQube 8580 is easy on your network as well. With RAM collation, files are sent over the network just once no matter how many sets are printed. Job pipelining allows the printer to process print jobs even if the print engine is busy with an earlier print job – thus optimising system performance by avoiding delays during job processing.



With Solid Ink technology and Xerox® 2400 FinePoint® print resolution, the ColorQube 8580 delivers superior colour quality and exceptional detail.

Section 2: Evaluating Colour Printers

Installation and Deployment

Installing and deploying a fleet of printers throughout your organisation is a potentially time-consuming, complicated process. The process isn't limited to physically placing the units in their new environments, but also includes integrating the devices with the existing network infrastructure.

How the Xerox® ColorQube® 8580 Exceeds the Installation and Deployment Requirements:

Installation

When you choose Xerox, you can rest assured that your equipment will be delivered and installed to your specifications and expectations. The ColorQube 8580 comes standard with 10/100/1000Base-T Ethernet connection, with features including automatic IP addressing, device naming and Ethernet speed sensing to provide simple and automatic network installation. Management and system setup can be accomplished through a variety of means, including easy wizard-based processes found within Xerox® CentreWare® Web.

Deployment

With the ColorQube 8580, print drivers can be deployed centrally, thereby eliminating the need for IT staff to perform desk-to-desk manual installation of the driver software. CentreWare Web wizards are provided to aid in the processes of installing, troubleshooting and upgrading print drivers for employees, freeing up IT personnel for more pressing projects. Driver support is delivered for Windows® (Server 2003/2008/XP/Vista/7), including most operating systems with 32- and 64-bit drivers; Macintosh OS® 10.7 and higher; and multiple UNIX and Linux platforms.

Plus the ColorQube 8580 supports two innovative new print drivers that can greatly simplify installing, managing and supporting printers and multifunction devices on the network, and increase end-user productivity:

- Xerox® Mobile Express Driver® makes it easy for mobile users to find, use and manage Xerox® and non-Xerox® devices in every new location. Plug into a new network, and Xerox® Mobile Express Driver® automatically discovers available printers and provides status and capability information. Save a list of “favourite” printers for each location, store application print settings for use on any printer in any network, and greatly reduce mobile support calls to IT.
- Xerox® Global Print Driver® is a truly universal print driver that lets IT administrators install, upgrade and manage Xerox® and non-Xerox® devices from a single driver. It provides a consistent, easy-to-use interface for end-users, reducing the number of support calls, and simplifying print services management.

In addition, these drivers provide users with a consistent single interface for all printers, with real-time, dynamic reports of printer status. As a result, users can easily identify the best printer for their needs, quickly choose the correct options and see updated consumables status without the assistance of IT. To learn more, and download these drivers for free, visit www.xerox.com/global and www.xerox.com/mobile.

Section 2: Evaluating Colour Printers

Security Capabilities

What type of security requirements does your office require? Does the printer have the security features to meet this demand? Can printer access be password protected? Does the printer remove latent images on disk drives and in memory?

How the Xerox® ColorQube® 8580 Exceeds the Security Requirement:

Integrated Security

Xerox is committed to the security of its products and takes a unique approach to security within the document industry: Xerox believes security should be built in as a core component of the printer and its controller.

Security features of the ColorQube 8580 include:

- **802.1X Support** – Ensures devices connected to the network are properly authorised.
- **Authentication**
 - **System Administrator Authentication** – The ColorQube 8580 allows access to administrative web pages to be restricted to authorised employees. Device Access Password Protection further restricts access to device setup screens and remote network settings.
- **Firewall** – Restricts access via IP Address Filtering, Domain Filtering and Port Blocking.
- **Audit Log** – Permits tracking of activity at the device, satisfying the needs of organisations that must provide logging of the transfer of Personally Identifiable Information per regulations like HIPAA, Sarbanes-Oxley, Gramm-Leach-Bliley Act and more.
- **IP Filtering** – Prevents unauthorised network access based on IP address or port number.
- **Print Channel Encryption** – Delivering secure communication via IPsec.
- **Secure Data Protocols** – The ColorQube 8580 supports HTTPS, enabling Xerox® CentreWare® Internet Services setup via industry standard Secure Sockets Layer (SSL) technology.

For more information regarding Xerox security, visit: www.xerox.com/security

Section 2: Evaluating Colour Printers Reliability

Office productivity relies on tools that do their jobs day in and day out.

Consider how often you need to intervene to replace paper or other consumables or to clear jams. How easy is that intervention, and how long is the device typically down? If outside assistance is required, how easy is it to schedule and how long do you have to wait? Is the device a reliable network citizen? Has it been tested and certified by independent industry participants?

How the Xerox® ColorQube® 8580 Exceeds the Reliability Requirement:

Day-to-day Reliability

Xerox introduced its first Solid Ink printer in 1991. In the years since, Xerox® Solid Ink printers and multifunction printers have come to be regarded as some of the industry's most reliable colour printing solutions.

The ColorQube 8580 builds on our Solid Ink expertise, providing maximum device uptime. And because the ColorQube 8580 has been engineered with a simple paper path and minimal moving parts, the printer helps optimise day-to-day reliability.

With a possible maximum paper capacity of up to 2,200 sheets, the ColorQube 8580 can also drastically reduce paper-reloading interruptions. Besides the ink sticks, the one customer replaceable unit is a long-life Page Maintenance Kit, which is as simple to replace as the ink sticks themselves.

Further, the ColorQube 8580 can diagnose potential problems and fix them ahead of time, reducing maintenance and service calls. Xerox® CentreWare® alerts can be configured to automatically inform IT staff of an interruption in service. In the event a print-head jet becomes clogged, the other adjacent jets automatically compensate for it so the device can remain in use until the problem self fixes during its calibration process. No service call is required.

Service / Support

Building on the reliability engineered into the ColorQube 8580, Xerox has trained and developed a sophisticated service-delivery network capable of maintaining your equipment, addressing issues users may encounter, and training IT staff and employees on how to get the most out of the equipment.

Section 3: Technical Specifications, Supplies and Support Resources Configuration Summary

The following sections provide details about the various Xerox® ColorQube® 8580 configurations, available options and supplies, and more helpful information.



		ColorQube 8580N	ColorQube 8580DN
Speed Colour and Black and White		Fast Colour: Up to 51 ppm; Standard: Up to 30 ppm; Enhanced: Up to 19 ppm; High Resolution: Up to 6 ppm	
Duty Cycle ¹		85,000 images / month	
Paper Handling Paper Input	Standard	Tray 1 (MPT): 100 sheets; Custom sizes: 3 x 5 in. to 8.5 x 14 in. / 76 x 127 mm to 216 x 356 mm Tray 2: 525 sheets; Selectable sizes: 3.9 x 8.3 in. to 8.5 x 14 in. / 99 x 211 mm to 216 x 356 mm	
	Tray 3: 525 sheets	Optional	
	Tray 4: 525 sheets	Optional	
	Tray 5: 525 sheets	Optional	
	Paper Output	350 sheets	
Automatic Two-sided Printing		Optional	Standard
Print First-page-out Time		As fast as 5 seconds colour	
Resolution (max)		Up to Xerox® 2400 FinePoint®	
Memory (std / max)		1 GB / 2 GB	
Processor		1 GHz	
Connectivity		10/100/1000Base-T Ethernet, USB 2.0, IPv6	
Page Description Languages		True Adobe® PostScript® 3™, PCL® 5c emulation, Direct PDF², JPEG, TIFF and PNG	
Print Features	Standard	Colour By Words, RAM Collation, Smart Duplex, Earth Smart Driver settings, Bidirectional drivers, Booklet printing, Watermarks, N-up printing, Graphical ink gauge, Run Black	
	Optional	Productivity Kit (adds SSD Memory), Personal/Personal Saved/Secure/Proof/Saved Print, Print With, Extended font/form storage, 256-bit AES data encryption, Collation)	
		Productivity Kit (increases RAM to 2 GB), expanded Secure Print and Print Job Collation capability	
Mobile Printing and Apps	Standard	Apple® AirPrint™, Mopria® certified	
	Free Download	Xerox® Print Service Plug-in for Android™	
	Optional	Xerox® Wireless Print Solutions Adapter (includes Apple AirPrint, Google Cloud Print™ v2.0 and Mopria®. For more information, visit www.xerox.com/WPSA)	
Warranty		One-year on-site warranty (geography dependent)	

¹ Maximum volume capacity expected in any one month. Not expected to be sustained on a regular basis.

² Requires Productivity Kit with 32 GB SSD.

Section 3: Technical Specifications, Supplies and Support Resources

Specifications

Specifications				
Device Management	Xerox® CentreWare® Internet Services, CentreWare Web, WebJet Admin Interface, Tivoli, Bonjour, Xerox® PhaserSmart®, PrintingScout®			
Print Driver Support	Windows® XP/2003/2008 Server, Vista, 7 Mac OS® version 10.7 and higher Sun Microsystems Solaris 9,10 Novell NetWare® 5.x/6.x Open Enterprise Server UNIX Linux Red Hat Enterprise 4 Fedora Core 1, 5, SUSE 10.x, 11.x IBM AIX 5, HP-UX 11.0/11i Xerox® Global Print Driver® Xerox® Mobile Express Driver® Xerox® Walk-Up® Printer Drivers			
Media Handling	Tray 1: 16 – 80 lb. cover / 60 – 220 gsm Trays 2 – 5: 16 – 80 lb. cover / 60 – 220 gsm Media types: plain paper, transparencies, envelopes, labels, glossy paper, custom-size paper, punched, card/cover stock			
Operating Environment	Temperature: Operating: 50° to 90° F / 10° to 32° C Relative Humidity: Operating: 10% to 80% Sound Power Levels: • Printing: less than 59 dBA • Standby: less than 31 dBA			
Electrical	Power: 100 – 240 V, 50 – 60 Hz Power Consumption: • Average: 252 W • Standby: 104 W • Sleep Mode: 45 W			
Dimensions	Width	Depth	Height	Weight
ColorQube 8580N and 8580DN	16 in. / 406 mm	20.5 in. / 521 mm	14.5 in. / 368 mm	60.5 lbs. / 27.4 kg
ColorQube 8580DT	16 in. / 406 mm	20.5 in. / 521 mm	19.5 in. / 495 mm	72 lbs. / 32.6 kg
Optional 525-Sheet Paper Feeder	15.5 in. / 394 mm	20 in. / 508 mm	5 in. / 127 mm	11.5 lbs. / 5.2 kg
Agency Approvals	Certified to UL 60950-1/CSA 60950-1-07, 2nd Edition, FCC Part 15 Class A, Low Voltage Directive 2006/95/EC, EN 60950-1, 2nd Edition, EMC Directive 2004/108/EC, EN 55024, ROHS Directive 2002/95/EC, 508 Compliance, GOST EN55022 Class A, TAA Compliant (Y configuration), ENERGY STAR® (DN and DT configurations), Mopria® certified			

Section 3: Technical Specifications, Supplies and Support Resources

Supplies

Description	Details	Part Number
Genuine Xerox® Solid Ink	2 Sticks Cyan: 4,400 pages ¹	108R00936
	2 Sticks Magenta: 4,400 pages ¹	108R00937
	2 Sticks Yellow: 4,400 pages ¹	108R00938
	2 Sticks Black: 4,300 pages ¹	108R00939
	4 Sticks Black: 8,600 pages ¹	108R00940
Routine Maintenance Items	Maintenance Kit: <10,000 pages ²	109R00784
	Maintenance Kit: <30,000 pages ²	109R00783
	Waste Tray	109R00754
Options	N to DN Upgrade	097S04673
	Productivity Kit with 32 GB SSD	097S04674
	Productivity Kit with 2 GB Memory	097S04672
	525-sheet Paper Tray	097S04142
	System Cart with Storage Drawer	097S03636

¹ Average standard pages. Declared Yield in accordance with ISO/IEC 24711. Yield will vary based on image, area coverage and print mode.

² Approximate pages. Declared Yield based on letter-/A4-size 20 lb. (75 gsm) pages. Yield will vary based on media type, size, weight, orientation, and usage patterns.

Section 3: Technical Specifications, Supplies and Support Resources

Support and Additional Information Sources

Unrivalled Service and Support

Behind every Xerox® product is a large network of customer support that's unrivalled in the industry and available when you need it. Xerox service professionals use leading-edge technologies to keep you up and running. They're even linked to the engineers who designed your product, so you can be confident when you choose Xerox. And genuine Xerox® supplies are always readily available.

Total Satisfaction Guaranteed

The exclusive Xerox Total Satisfaction Guarantee, recognised as unique in the industry, covers every Xerox® ColorQube® device that has been continuously maintained by Xerox or its authorised representatives under a Xerox express warranty or Xerox Maintenance agreement. You decide when you're satisfied.

Xerox® Office Services Support

Asset Management Services

- **Asset Optimisation and Tracking** – Process and tools to optimise an enterprise's office output infrastructure and reduce hard costs.
- **Break-Fix Management** – Single point of ownership and management for break-fix service of all brands of office output devices, regardless of manufacturer.
- **Supplies Management** – Process and tools to procure, monitor and replenish all document-related supplies proactively.

Imaging and Output Management Services

- **Output Management** – Single point of management of office output from all output devices, regardless of manufacturer.
- **Image Capture and Workflow** – Cost-efficient solutions for capturing, managing, retrieving and distributing information into digital repositories.

Support Services

- **Technology Procurement and Deployment** – A creative and flexible end-to-end print/computer product acquisition solution that uses a single-point-of-contact model while lowering the total cost of acquisition.
- **Help Desk Services** – A broad range of enterprise services, managed through a centralised single point of contact and delivered through either an on-site or off-site model.
- **End User Services** – Microsoft software implementation, IT project consulting, and customer education.

Access Managed Services

Student and Library Patron Access – Custom designed and implemented customer-managed solutions.

Additional Information Sources

ColorQube 8580 Front Panel:

The front panel offers tools and information pages to help with machine setup, feature selections, operational problems, media feed and supply issues.

Customer Documentation:

- Installation Guide
- Quick Use Guide
- Software and Documentation CD-ROM
- Warranty Booklet

On the Web:

Visit www.xerox.com/office for:

- Product, supplies, and support information
- Downloading drivers
- Finding your local reseller
- Online documentation

Visit www.xerox.com/office/support for:

Support and service information, including the same troubleshooting Knowledge Base used by Xerox Customer Support staff to provide the latest technical information on:

- Application issues
- Errors
- Print-quality issues
- Troubleshooting

Questions? Comments? Problems?

For more information about the Xerox® ColorQube® 8580 please contact your Xerox sales representative, or visit us on the web at www.xerox.com/office.

