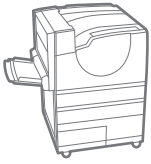


Phaser®
7760
A3
Colour
Laser Printer



Xerox® Phaser® 7760 Colour Laser Printer The designer's choice



Phaser® 7760 Colour Laser Printer

High-quality, consistent colour is crucial when you rely on stunning visuals to convey your ideas and concepts. That's why the Xerox Phaser 7760 colour printer is the designer's choice. It offers brilliant colour, blazing speeds and easy-to-use features that make the most of everything you print.

Quality colour you can count on

The colour you want is the colour you get. This printer features technologies and software that allow you to specify and control the output colour, so the results match your expectations. You get consistent colour accuracy, sharp images, and crisp text, from the first page to the last.

- **Up to 1200 x 1200 dpi** resolution for fine line detail and crisp text.
- **600 x 600 x 4 dpi Photo Mode** for smooth colour transitions, especially flesh tones.
- **Glossy, vivid colours** and rich, deep blacks.
- **Black Trapping** ensures that black text on coloured backgrounds and coloured text on black backgrounds prints sharp and clear.
- **TekColour correction** helps you simulate output colours of your computer screen, printing press or other device. Colour can be managed automatically as well as manually for office graphics, press separations, monochrome graphics and spot colours via an industry-leading driver interface.
- **PhaserMatch® 4.0 colour management** and calibration software adds another level of colour control and helps maintain colour accuracy.
- **Incredibly consistent output** through-out the length of the print run.

Unbeatable performance

When it comes to printing important projects on time, you need both quality and speed. The Phaser 7760 printer is designed for high volume printing and offers impressive print speeds, efficient processing and other time saving features. You get the consistent quality you need, when you need it.

- **Printing speeds up to 35 ppm colour** and 45 ppm black-and-white.
- **800 MHz Power PC processor** handles complex, graphic-intensive layout files with ease.
- **First-page-out time as fast as 9 seconds** for colour.
- **Up to 1 GB of memory** minimizes print queues and keeps production moving.
- **Supports custom page sizes**, booklet and banner printing, and reliably prints on a wide range of media types and heavy paper weights for maximum project flexibility.

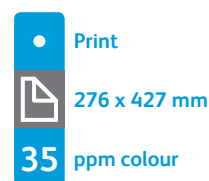
Set up, manage and print with ease

Your busy office or graphics department needs a reliable printer that's easy to operate, requires minimal maintenance and won't slow you down. Simple setup and easy-to-use features of the Phaser 7760 save valuable time and free you up to focus on your work, not your printer.

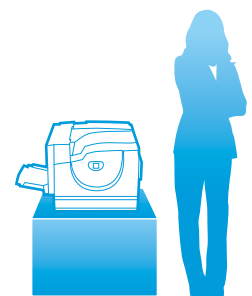
- **Simple automated print driver** installation gets you printing in minutes.
- **It fits easily into your office**, either as a desktop unit or a hard-working floor model with plenty of paper capacity. Both require only front and side access.
- **PrintingScout® alerts** and media size sensors offer built-in help to ensure your job is printed right.
- **PhaserSMART®** remote diagnostic tool offers solutions and trouble-shooting help if needed, saving you time.
- **CentreWare® Internet Services** embedded web server allows you to manage, configure and troubleshoot your printer from any location on the network using a web browser.
- **Smart Tray** feature provides real-time paper tray status at your desktop – showing available media types and sizes – and automatically selects the correct tray.
- **Smart two-sided printing** feature automatically detects single-page print jobs and bypasses the duplex unit.

Phaser® 7760 Quick Facts

- Print up to 35 ppm colour and 45 ppm black-and-white
- True 1200 x 1200 dpi
- 800 MHz processor
- 150,000 pages/month duty cycle
- 512 MB memory, expandable to 1 GB

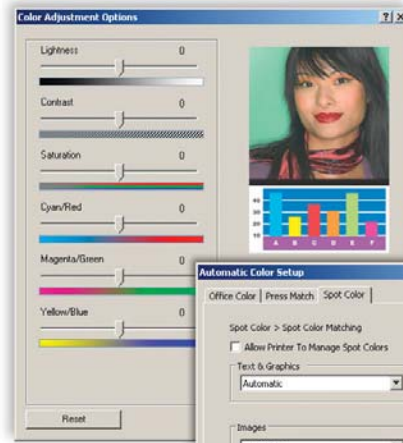


WxDxH:
7760DN
644 x 724 x 493 mm

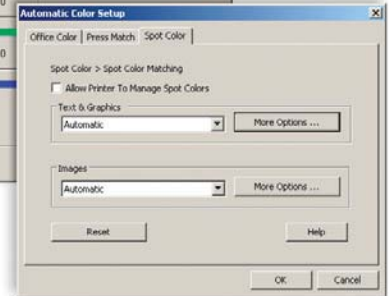




Built in colour calibration tools give you the final output you want.



Advanced Colour tools allow you to fine-tune output to your specifications.



- 1 150-sheet Tray 1 feeds a wide range of custom-size media all the way up to 317 x 1180 mm. banner sheets
- 2 500-sheet main tray supports custom sizes up to 294 x 427 mm.
- 3 1,500-sheet Feeder (standard on Phaser 7760GX) includes three universal trays that support paper sizes up to 276 x 427 mm. and boosts total paper capacity to 2,150 sheets
- 4 2,500-sheet Feeder (standard on Phaser 7760DX) includes one universal tray and two letter-size trays. It boosts total paper capacity to 3,150 sheets
- 5 Automatic two-sided printing for convenient, paper saving output
- 6 Choose one of two optional finishers and eliminate the effort and expense of manually collating, folding and stapling.



Phaser® 7760 Printer Configurations

Phaser 7760DN

- 2-Tray, 650-sheet capacity
- Automatic two-sided printing
- 10/100/1000 Base-TX Ethernet, USB 2.0 connectivity

Phaser 7760GX

7760DN model plus:

- 1,500-sheet High Capacity Feeder for 2,150-sheet total capacity
- PhaserMatch® 4.0 colour management

Phaser 7760DX

7760DN model plus:

- 2,500-sheet High Capacity Feeder for 3,150-sheet capacity
- PhaserMatch® 4.0 colour management

Options

- Additional Memory
- 1,500-sheet High-Capacity Feeder
- 2,500-sheet High-Capacity Feeder
- Advanced Finisher
- Professional Finisher
- Printer Cart
- PhaserMatch 4.0

Phaser® 7760

Colour Laser Printer



	Phaser 7760DN	Phaser 7760GX	Phaser 7760DX
Speed	Up to 35 ppm colour / 45 ppm black-and-white		
Duty Cycle	Up to 150,000 pages / month		
Paper Handling Paper input	Tray 1: 150 sheets; Custom sizes: 100 x 140 mm to 320 x 1200 mm		
	Tray 2: 500 sheets; Custom sizes: 140 x 182 mm to 297 x 432 mm		
	Optional	Tray 3: 500 sheets; Selectable sizes: up to A3 (297 x 420 mm)	
	Optional	Tray 4,5: 1,000 sheets; Selectable sizes: up to A3 (297 x 420 mm)	Tray 4,5: 2,000 sheets; A4 (210 x 297 mm)
Finishing options*	Advanced Finisher: 50-sheet multi-position stapling, 3-hole punch, up to 3,500 sheets		
	Professional Finisher: 50-sheet multi-position stapling, 3-hole punch, saddle-stitch booklet making, v-folding, up to 2,000 sheets		
Automatic two-sided printing	Standard		
Print First-page-out-time	As fast as 9 seconds colour, 6 seconds black-and-white		
Resolution (max)	Up to 1200 x 1200 dpi		
Processor	800 MHz		
Memory (std / max)	512 MB / 1 GB		
Connectivity	Ethernet 10/100/1000 Base-TX, USB 2.0		
Page description languages	Adobe® PostScript® 3™, PCL® 5c emulation, Adobe PDF-Direct		
Print features Standard	Custom Size Pages, Booklet Printing, Banner-size Printing, Smart Trays, Proof, Secure, Saved and Personal Print, Personal Saved, Print With, PDF Direct, Extended Font Storage, Job Collation, PhaserSMART®, Intelligent Ready, Scaling, Watermarks, Separation Pages, N-up, Run Black, Smart Duplexing, Remote printing, Job Pipelining		
	PhaserCal® Colour Calibration	PhaserCal® plus PhaserMatch® 4.0 Colour Management	
Accounting	Job Accounting, Usage Analysis Tool		
Warranty	One-year on-site warranty, Xerox Total Satisfaction Guarantee		

*Width of 12.6 is limited in length, performance of banner-size printing is affected by media length and media weight

Device Management

CentreWare® IS Embedded Web Server, Email Alerts, Printer Neighborhood, CentreWare® Printer Management Software, Job Accounting, Usage Analysis Tool, PrintingScout® Alert notification

Print Drivers

Windows® XP/Server 2003/2008/Vista, Mac OS® 9.x/X, version 10.2 or higher, Novell NetWare® 5.x/6.x, UNIX (Linux® 5.2+, Sun OS 4.x, Sun Microsystems Solaris® 2.4+, DEC, HP/UX 11.x, IBM AIX® 4.2+, SGI, SCO), Xerox Walk-Up® Printer Drivers with Windows

Font Capability

137 PostScript® fonts; 81 PCL® fonts

Colour Standards

PANTONE®-approved solid-colour simulations, Adobe PostScript device-independent colour, CIE International colour standards, and support for ICC, ICM and Apple ColourSync colour management systems, TekColour Dynamic Correction, PhaserMatch 4.0

Media Handling

Tray 1: 75–255 gsm; Trays 2-5: 75–220 gsm; Automatic 2-sided printing: 75–169 gsm; Finishing: Staples on media up to 80 gsm, Folds and Staples up to 10 booklets of 10 sheets; Media types: Plain paper, envelopes, transparencies, labels, card/cover, glossy

Operating Environment

Temperature: Storage: -20° to 48° C; Operating: 10° to 32° C
Relative Humidity: Storage: 30% to 85%, Operating: 10% to 85%. Noise Level: 33dBA standby, 51 dBA running.

Electrical

110V, 50/60Hz model: Consumption: Printing: 616–684 Watts, Standby: 134 Watts, Power Saver: 13 Watts. 220V, 50/60Hz model: Consumption: Printing: 764 Watts, Standby: 135 Watts, Power Saver: 14 Watts, ENERGY STAR® qualified printer; Default time to Power Saver: 60 min.

Dimensions (WxDxH)

7760DN: 644 x 724 x 493 mm, weight: 92 kg; 7760GX/7760DX: 644 x 724 x 857 mm, weight: 7760GX: 122 kg, 7760DX: 132 kg; Finisher: 644 x 889 x 991 mm, weight: Advanced: 83 kg, Professional: 115 kg; Cart: 572 x 602 x 373 mm weight: 15.7 kg

Certifications

Listed to UL 60950-1/CSA 60950-1-03, 1st Edition, FDA/CDRH – Class 1 Laser Product, FCC Part 15, Class A, Canada ICES-003, Class A, CE marked, Low Voltage Directive 73/23/EEC, EN 60950-1, 1st Edition, EN 60825-1 – Class 1 Laser Product, EMC Directive 89/336/EEC, EN 55022, Class A, EN 55024, RoHS Directive 2002/95/EC, WEEE Directive 2002/96/EC

Supplies

Black: 32,000 pages ¹	106R01163
Cyan: 25,000 pages ¹	106R01160
Magenta: 25,000 pages ¹	106R01161
Yellow: 25,000 pages ¹	106R01162
Staple Pack	
Stacker Staples: 15,000	008R12941
Booklet Staples: 20,000	008R12925

¹ Capacities are approximate, based on 5% coverage on an A-sized page.

Routine Maintenance Items

Imaging Unit: Up to 35,000 pages	108R00713
Fuser (110 V): Up to 100,000 pages	115R00049
Fuser (220 V): Up to 100,000 pages	115R00050
Waste Cartridge: Up to 27,000 pages	108R00575
Transfer Roller: Up to 100,000 pages	108R00579
Belt Cleaner Assembly	108R00580

Options

512 MB Phaser Memory	097S03635
1,500-sheet High-Capacity Feeder:	
three 500-sheet Universal trays	097S03628
2,500-sheet High-Capacity Feeder: one 500-sheet Universal tray, plus two 1,000-sheet A trays	097S03629
Advanced Finisher ² 3,500 sheets, stacker, stapler, 3-hole punch	097S03630
Professional Finisher ² 2,000 sheets, stacker, stapler, 3-hole punch, booklet maker	097S03631
Printer Cart	097S03748
PhaserMatch 4.0	097S03634

² Installation by Xerox recommended



Call today. For more information, call **1-877-362-6567** or visit us at **www.xerox.com/office**

© 2009 Xerox Corporation. All rights reserved. XEROX®, CentreWare®, Phaser®, PhaserSMART®, PhaserCal®, PhaserMatch®, PrintingScout® and the sphere of connectivity design are trademarks of Xerox Corporation in the U.S. and/or other countries. PANTONE Colours generated may not match PANTONE-identified standards. Consult current PANTONE publications for accurate colour. PANTONE®, and other Pantone, Inc. trademarks are the property of Pantone, Inc. PCL® is a registered trademark of Hewlett-Packard. ENERGY STAR® is a U.S. registered mark. As an ENERGY STAR® Partner, Xerox Corporation has determined that these products meet the ENERGY STAR® guidelines for energy efficiency. All other trademarks are the property of their respective manufacturers. Product information and/or specifications are subject to change without notice. 10/09 610P724930H 7760R-011B

