

Phaser®
6360
A4
Colour
Laser Printer



Xerox® Phaser® 6360

Colour Laser Printer

Office colour performance
redefined



Phaser® 6360 Colour Laser Printer

Setting the standard for high-performance colour laser printers. The Xerox Phaser 6360 leads the industry with best-in-class print speed and exceptional colour performance. Easy to operate and engineered to meet the exacting demands of high-volume office environments, the Phaser 6360 laser printer isn't just an obvious choice; it's the only choice.

Unrivalled performance

In the race for print speed supremacy, the Phaser 6360 printer sets the pace.

- **Unparalleled, professional quality colour in a busy environment.** Stay efficient with a first-page-out-time as fast as 9 seconds and high speed of up to 40 ppm.
- **Print resolution of 2400 dpi and Adobe® PostScript® 3™.** The combined page description language and high print resolution give your work vibrant, true-to-life colours, crisp text and image definition.
- **The industry's only A4-size colour printer with a built-in 1 GHz processor.** The Phaser 6360 has the power to handle even the most complex print jobs.
- **Fast, automatic, two-sided printing.** The Phaser 6360DN, DT and DX configurations feature standard onboard duplexing.

Printing simplified

With ultra-fast setup and seamless operation, the Phaser 6360 printer delivers unbeatable ease-of-use.

- **User-friendly installation software.** Gets the Phaser 6360 out of the box and running smoothly on your network in minutes.
- **PhaserSMART® online troubleshooting.** Saves you time by providing 24/7 access to the Xerox Knowledge Base system.
- **Xerox CentreWare® IS Embedded Web Server.** Works seamlessly with your browser enabling you to check print job status from the comfort of your chair.
- **Built-in PrintingScout® function.** Tracks print jobs and provides immediate print-issue alerts and timely correction suggestions.
- **Smart Trays alleviate guesswork.** Shows all available media types and sizes at print time.
- **Convenient email alerts.** Notify network administrators of common delays, such as low toner levels, to help maintain an uninterrupted workflow.

Built for sharing

High-capacity paper volumes, powerful performance features and seamless network integration make the Phaser 6360 the ultimate multi-user printing solution.

- **Maximum paper input of 2,350 pages and high-capacity toner cartridges.** Keep the Phaser 6360 poised to handle a steady stream of print jobs.
- **Up to 5 paper trays.** Allows the Phaser 6360 to easily adapt to the size of your office.
- **100,000-page-per-month duty cycle.** Provides reliable operation for high-demand office environments.
- **A variety of printing possibilities.** Ranging from booklet to banner to a full range of custom sizes – lets your creativity run wild.
- **Usage Analysis Tool.** Enable the administrators to easily collect, organise and analyse print job accounting data from multiple printers



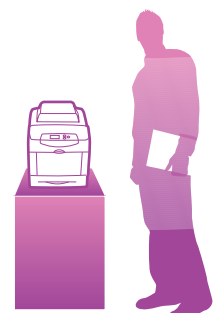
Spectacular results. Bring everyday office print jobs to life with attention-grabbing colour quality.

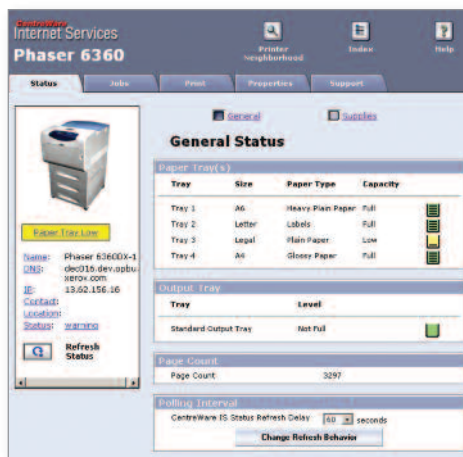
Phaser® 6360 Quick Facts

- Print up to 40 ppm colour and black and white
- 2400 x 600 dpi
- 1 GHz processor
- 100,000 pages/month duty cycle
- 256 MB memory, expandable to 1 GB



WxDxH:
6360N/DN
429 x 580 x 513 mm





Real-time paper and supply-level status lets you take action before the printer runs out.

1

Fast, automatic two-sided printing is standard on all configurations except 6360N.

2

150-sheet multipurpose tray (standard) supports a wide range of media, from 89 x 140 mm to banner, card stock to envelopes.

3

550-sheet tray (standard) allows you to add a full ream of paper.

4

An optional 550-sheet paper feeder provides added convenience and no-hassle media loading.

5

Add the 1,100-sheet, high-capacity feeder and turn the Phaser 6360 into a convenient floor-standing printer with a total paper capacity of 2,350 sheets.



Phaser® 6360 Printer Configurations

Phaser 6360N

- 2-Tray, 700-sheet capacity
- 10/100Base-TX Ethernet and USB connectivity
- 256 MB memory (expandable to 1 GB)

Phaser 6360DN

6360N model plus:

- Automatic two-sided output

Phaser 6360DT

6360DN model plus:

- Additional 550-sheet feeder for 1,250-sheet capacity
- 256 MB memory (expandable to 1 GB)

Phaser 6360DX

6360DN model plus:

- Additional 1,100-sheet feeder for 1,800-sheet capacity
- 256 MB memory (expandable to 1 GB)
- Productivity Kit (includes 40 GB Hard Drive)

Options

- Productivity Kit (includes 40 GB Hard Drive)
- 550 and 1,100-sheet feeders
- Additional memory

		Phaser 6360N	Phaser 6360DN	Phaser 6360DT	Phaser 6360DX
Speed		Up to 40 ppm colour / 40 ppm black and white			
Duty Cycle		100,000 pages / month*			
Paper Handling					
Paper input	Standard	Tray 1 (MPT): 150 sheets; Selectable sizes: 89 x 140 mm to 216 x 914 mm			
		Tray 2: 550 sheets; Selectable sizes: Up to A4			
	Optional	Additional 550-sheet Feeder		Standard	Optional
		Additional 1100-sheet Feeder			Standard
Paper output	Standard	250 sheets			
Automatic two-sided printing		Optional	Standard		
Print					
First-page-out-time		As fast as 9 seconds colour			
Resolution (max)		2400 x 600 dpi			
Processor		1 GHz			
Memory (std / max)		256 MB / 1 GB		512 MB / 1 GB	
Connectivity		10/100Base-TX Ethernet, USB 2.0, IPv6**			
Page description languages		Adobe® PostScript® 3™, PCL® 5c emulation			
Print features		Booklet printing, Mirror image, Scaling, Watermarks, Custom-size pages, Run Black, Covers, Separators, RAM collation, Remote Printing, N-up			
Productivity kit		Optional			Hard drive: Secure/Proof/Personal/Shared Saved/Personal Saved Print, Print With, Hard disk collation, PDF-direct print, Extended font/form storage
Security		802.1x, IPsec, SMNP v3, Secure Print and Hard Drive Overwrite (requires Productivity Kit)			
Warranty		One-year on-site warranty ***			

* Range reflects the number of pages per month the product can regularly print while maintaining optimal performance (considering factors including supplies replenishment and reliability over the expected product life)

** Requires system firmware version 1.3.7.P.

***Products purchased under a "PagePack" agreement do not carry a warranty. Please refer to your service agreement for full details of your enhanced service package.

Device Management

CentreWare® IS Embedded Web Server, CentreWare Web, Xerox NDPS Gateway, Xerox Usage Analysis Tool, Xerox Support Centre, Configuration card, PrintingScout™, MailInX email alerts, PhaserSMART®

Print Drivers

Windows® XP/2003 Server, Vista™, Windows 7, Mac OS® version 10.3 and above, Novell NetWare® 5.x/6.5 (NPDS only), Linux Red Hat®, Fedora™ Core 5, Suse™ Linux 10.0, UNIX: Sun Solaris™ 9/10, IBM AIX® 5.1, HP/UX® 11.0/11i, Xerox Walk-Up® Printer Drivers with Windows

Font Capability

PostScript® Fonts: 139; PCL® Fonts: 81

Media Handling

Tray 1 (MPT): 65–216 gsm; Trays 2–5: 65–163 gsm; Two-sided output: 65–163 gsm; Media types: Plain paper, glossy, envelopes, labels, transparencies, card stock

Colour Standards

PANTONE® Colour approved solid-colour simulations, Adobe® PostScript® device-independent colour, CIE International colour standards, Colour options, ICC Profile, Apple ColorSync®

Operating Environment

Temperature: Storage: 0° to 35° C, Operating: 10° to 32° C; Humidity: 15 % to 85 %; Sound pressure levels: Printing: 58.0 dB(A), Standby: 34.4 dB(A); Sound power levels: Printing: 7.26 B, Standby: 5.0 B; Warm-up time (from sleep mode): 49 seconds

Electrical

Power: 220–240 VAC, 50/60 Hz; Power consumption: Standby: less than 95 W, Printing: less than 750 W, Power save: less than 22 W, 6360DN/DT/DX: ENERGY STAR® qualified

Dimensions (WxDxH)

6360N/DN: 429 x 580 x 513 mm; 6360DT: 429 x 580 x 643 mm; 6360DX: 572 x 698 x 854 mm; Weight: 6360N/DN: 35.2 kg, 360DT: 42 kg, 6360DX: 56.2 kg

Certifications

FCC Part 15, Class A, Listed UL 60950-1/CSA 60950-1-03, CE Mark applicable to Directives 73/23/EEC, 89/336/EEC, and 1999/5/EC, Section 508 ADA

Supplies

Standard-capacity toner cartridge:

Black: 9,000 pages ¹	106R01217
Cyan: 5,000 pages ¹	106R01214
Magenta: 5,000 pages ¹	106R01215
Yellow: 5,000 pages ¹	106R01216

High-capacity toner cartridge:

Black: 18,000 pages ¹	106R01221
Cyan: 12,000 pages ¹	106R01218
Magenta: 12,000 pages ¹	106R01219
Yellow: 12,000 pages ¹	106R01220

Routine Maintenance Items

Imaging unit: 35,000 pages ²	108R00645
220V Fuser: 100,000 pages ³	115R00056
Transfer roller: 35,000 pages	108R00646

Options

N to DN Upgrade	097S03791
Productivity kit	097S03747
550-sheet feeder	097S03378
1100-sheet feeder	097S03379
Phaser memory	
-256 MB	097S03381
-512 MB	097S03382
Wireless network adapter	
-European Power Converter ⁴	097S03741
-UK Power Converter	097S03742

¹ Average standard pages. Declared Yield based on 5% area coverage on letter/A4-size page. Yield will vary based on image, area coverage and print mode.

² Approximate pages. Declared yield based on an average job size of 4 A4-size pages. Yield will vary depending on job run length and media size and orientation.

³ Approximate pages. Declared yield based on A4-size 75 gsm pages. Yield will vary depending on media type, size, weight, orientation and usage patterns.

⁴ Not available in Denmark and Switzerland



For more information visit us at www.xerox.com/office

© 2009 Xerox Corporation. All rights reserved. XEROX®, CentreWare®, Phaser®, PhaserSMART®, PrintingScout® and the sphere of connectivity design are trademarks of Xerox Corporation in the U.S. and/or other countries. All other trademarks are the property of their respective manufacturers. PANTONE Colours generated may not match PANTONE-identified standards. Consult current PANTONE publications for accurate colour. PANTONE and other Pantone, Inc. trademarks are the property of Pantone, Inc. PCL® is a registered trademark of Hewlett-Packard. As an Energy Star partner, Xerox Corporation has determined that these products (Phaser 6360DN / DT / DX) meet the Energy Star guidelines for energy efficiency. Energy Star and the Energy Star mark are registered U.S. marks. The information in this brochure is subject to change without notice. 12/09 636BR-01EC

