

XEROX®

Technology | Document Management | Consulting Services

Phaser® 6250



color laser printer

Fast-paced color printing for the office



Phaser 6250

Color Laser Printer

An advanced laser printer that can keep up with the nonstop pace of your office – with fast speed, accurate color and efficient tools that make printing easier than ever.

Fast printing...

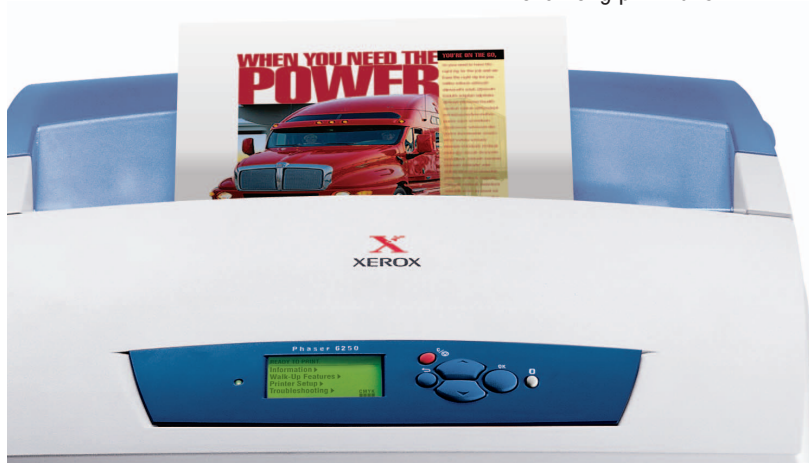
Your office will notice the speed and power advantage immediately. Even with heavy network traffic and complex print jobs in the queue, you get your output fast.

- Print up to **26 ppm** high-resolution full color and get crisp black and white at the same rapid speed.
- The performance driven **700 MHz** PowerPC processor speeds through more print jobs in less time. Up to **512 MB** RAM and an available hard drive add even more productivity.
- In less than **12 seconds** your first page is in the output tray waiting for you.
- With instant wake-up, the Phaser 6250 comes out of power-saving mode in seconds, ready to print.
- It does double duty as both a black-and-white and color printer. The Phaser 6250 can continue to print in black-and-white when a color toner is empty.

...with outstanding image quality

Your printed output has never looked better. Standout laser quality makes every element on your page communicate with depth and richness.

- Print brilliant, precise **2400 dpi** color right “out of the box.” Incredibly rich, image-enhancing Photo mode (at 26 ppm) and economical Toner-saving mode give you more print options.
- True Adobe® PostScript® 3™ and color that is optimized for the most common office uses deliver the results you expect the first time, every time.
- The fine-tuned single-pass print system improves registration, while automatic calibration keeps color pure and consistent over long print runs.



Technology for the way you work.

Push button easy
for the user...

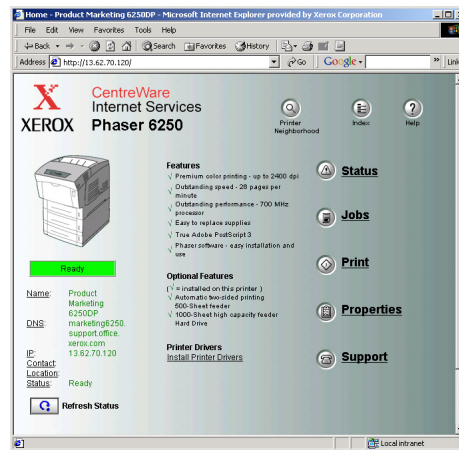
You don't have to learn how to use the printer. We've designed it to be easy and intuitive. It even features technology that learns your printing behavior.

- Printer installation has never been easier. In fact, it is just a one-click process.
- Status bars on the front panel let you monitor the toner levels. And when the toners need replacement, simply open the easy-access compartment at the top of the printer.
- You don't have to check on the printer or what paper is loaded in the trays. The dynamic driver interface provides real time printer status, automatically selects the correct tray, and even "learns" office application settings.
- You are alerted immediately with a pop-up message on your monitor if any roadblocks arise during your print job. A step-by-step solution appears too.

need more information?

Find it at www.xerox.com/office

See it in action. Visit your Xerox reseller, or see a virtual demo: www.xerox.com/office/6250demo



...to precise and
advanced for network
administrators

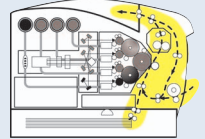
We've given your system administrator plenty of tools to reduce costs and ensure that printing is running smoothly throughout the enterprise.

- Xerox CentreWare® software provides quick access to a wealth of features, including printer and job status, in-depth accounting information, email alerts, simplified printer installation and network administration.
- Web pages built into the printer (CentreWare IS Embedded Web Server), allow you to manage, configure and troubleshoot printers from anywhere using a web browser.
- The intelligent Phaser 6250 printer can even troubleshoot on its own. It has onboard PhaserSMART®, a unique Internet-based automated support tool. It's like a built-in Help Desk.

Service & Support. Learn about Total Satisfaction Services™ award-winning service and support: www.xerox.com/office/support

Robust and reliable

- The robust duty cycle of up to 100,000 pages per month means the Phaser 6250 printer can be used for in-house production as either a standalone or networked printer.
- Flawless paper handling is a fine-tuned science at Xerox. You'll see the difference with the printer's streamlined paper path and new dual pick mechanism for optimum reliability.
- Your investment is backed by world-class service and support, a 1-year on-site warranty and the unmatched Xerox Total Satisfaction Guarantee.



Flexible paper handling

- 1 Use Tray 1 (MPT) for heavy paper up to 80 lb. cover (216 gsm), envelopes, labels, business cards and other specialty projects (up to 100 sheets).
- 2 Tray 2: 500-sheet paper tray (standard) feeds 17-28 lb. bond (64-105 gsm) paper and transparencies.
- 3 A high-capacity feeder (standard on our most productive configuration) adds 1000 sheets of input capacity for a total of 1600 sheets.

Money-saving and fast automatic duplex option for two-sided printing (standard on DP, DT, DX configurations).



Phaser 6250DX color printer

Call today. For more information, call 1-877-362-6567 or visit us at www.xerox.com/office



For information about Phaser Media for this product, go to www.xerox.com/office/6250

| CONFIGURATIONS | 6250B | 6250N | 6250DP | 6250DT | 6250DX |
|----------------------------|--|--|----------|-----------------------------|---|
| Performance | | | | | |
| Print speed | Up to 26: ppm in Full Color / 26 ppm Black | | | | |
| First page out | As fast as: 12 seconds in full color | | | | |
| Memory (Std / Max) | 128 / 512 MB RAM | 256 / 512 MB RAM | | 512 / 512 MB RAM | |
| Processor | 700-MHz PowerPC processor, Adobe PostScript 3 – 137 fonts, PCL5c – 81 fonts | | | | |
| Internal hard drive | N/A | Optional | | | Standard (20 GB min) |
| Maximum duty cycle | Up to 100,000 pages/month | | | | |
| Print Quality | | | | | |
| Maximum resolution | 2400 dpi, 600 dpi | Photo Mode, 2400 dpi, 600 dpi | | | |
| Networking | | | | | |
| Network connectivity | Parallel, USB 2.0 | 10/100BaseTX Ethernet, Parallel, USB 2.0 | | | |
| Paper Handling | | | | | |
| Automatic 2-sided printing | Optional | | Standard | | |
| Paper input capability | 500-sheet standard tray, 100-sheet multi-purpose tray | | | | |
| Standard | | | | Additional 500-sheet feeder | 1000-sheet High-Capacity feeder |
| Productivity | | | | | |
| Standard features | Run black, Custom size pages, Phaser Installer, Intelligent Ready, Job Pipelining | | | | |
| | Embedded Web Server, Remote printing, E-mail alerts, Enhanced PrintingScout, PhaserSMART, Job Accounting, Usage Analysis Tool, Booklet Printing, Smart Trays, Banner-size printing | | | | Proof/Secure/Saved print, PDF-direct, Extended font storage |
| Warranty | One year on-site, Xerox Total Satisfaction Guarantee | | | | |

| Consumables | |
|--|-----------|
| Standard-Capacity Toner Cartridges* | |
| Cyan (4,000 pages) | 106R00668 |
| Magenta (4,000 pages) | 106R00669 |
| Yellow (4,000 pages) | 106R00670 |
| Black (4,000 pages) | 106R00671 |
| High-Capacity Toner Cartridges* | |
| Cyan (8,000 pages) | 106R00672 |
| Magenta (8,000 pages) | 106R00673 |
| Yellow (8,000 pages) | 106R00674 |
| Black (8,000 pages) | 106R00675 |

*Capacities are approximate, based on 5% coverage on an A-sized page.

Visit www.xerox.com/GWA for information about the Xerox Green World Alliance supplies recycling program

| Routine Maintenance Items | |
|--|-----------|
| Imaging Unit (Up to 30,000 pages) | 108R00591 |
| Transfer Roller (Up to 15,000 pages) | 108R00592 |
| Fuser (110 Volt) (Up to 100,000 pages) | 115R00029 |
| Fuser (220 Volt) (up to 100,000 pages) | 115R00030 |

| Options | |
|-------------------------------------|-----------|
| Internal Hard Drive (20 GB minimum) | 097S03095 |
| 128 Mbytes Memory | ZMD128 |
| 256 Mbytes Memory | ZMD256 |
| 512 Mbytes Memory | ZMD512 |
| 500-sheet Feeder | 097S03100 |
| High-Capacity Feeder 1,000 sheets | 097S03101 |
| Supplies Start Kit, Standard Media | 097S03096 |

| Upgrades | |
|--------------------------------|-----------|
| Phaser 6250B to 6250N Upgrade | 097S03099 |
| Phaser 6250N to 6250DP Upgrade | 097S03098 |

Network/Software

Printer management Xerox CentreWare Printer Management for Microsoft, Novell and Unix, CentreWare IS Embedded Web Server, CentreWare Web Administrator, Xerox NDPS Gateway, Usage Analysis Tool (not available on non-networked model)

Font capabilities 137 Resident PS fonts and 81 PCL

Printer drivers Windows 95/98/Me, Windows NT 4.x, Windows 2000/XP, Windows Server 2003, MacOS 9/X versions 10.1 and 10.2, Novell NetWare 4.x/5.x/6.x, UNIX (Linux 5.2+, Sun OS 4.x Sun Solaris 2.4+, DEC, HP/UX 11.x, IBM AIX 4.2+, SGI, SCO), Xerox Walk-Up Printing Driver

Languages True Adobe® PostScript® 3™, PCL 5c emulation with automatic sensing and switching

Paper handling

Tray 1 (MPT): (standard) papers up to 80 lb. Cover (216 gsm), coated, glossy, Phaser Digital Photo Paper, labels, envelopes, business cards, greeting cards, CD/DVD label/inserts, Phaser 25-Series Transparency Film. *Media sizes:* A/Letter, Legal, Executive, Statement, US Folio, A4, A5, A6, B5 JIS, ISO B5, and Custom* (size range: 3.5–8.5 in. (89–216 mm) x 5.5–35.45 in. (140–900 mm)). (*not available on B configuration)

Tray 2: 500-sheet Tray (standard) 17-32 lb. (64-130 gsm) bond and heavy plain papers, glossy coated paper, labels, Phaser 25-Series Premium Transparency Film

Tray 3: 500-sheet Feeder (standard on DT) 17-32 lb. (64-130 gsm) Bond and heavy papers, glossy coated paper. *Media sizes:* A/Letter, Legal, Executive, US Folio, A4, B5 JIS.

Tray 3-4: 1000-sheet Feeder (standard on DX) same media weight and sizes as Tray 3 (above) *Automatic 2-sided printing:* 20-32 lb. Bond to 110 lb. glossy coated paper (75-163 gsm)

Special features

Enhanced PrintingScout instantly displays pop-up Help if attention is needed throughout print job.

Phaser Installer automatically gets you printing in seconds.

PhaserSMART trouble-shoots via an automated internet-based support system.

Productivity tools: Secure Print*, Proof Print*, Saved Print*, Booklet printing, Negative and mirror images, Scaling, Watermarks, Custom size paper, Run black, Cover pages, Collation printing*, Remote printing, Separation pages, N-Up printing, PDF-direct printing*, Saved Job Repository, MailInX E-mail Alerts, Job Completion Notification (*Requires hard drive)

Color controls

Color standards PANTONE®-approved solid-color simulations, Adobe PostScript device-independent color, CIE international color standards, and support for ICC and Apple® ColorSync® color management systems

Print quality modes: Photo mode; Enhanced mode: 2400 dpi; Draft mode: 600 dpi

Color correction modes: Automatic, sRGB Display, sRGB Vivid, None, SWOP Press, Euroscale Press, Commercial Press, SNAP Press, Black and White, Use Printer Front Panel Setting

Operating

Dimensions width: 17.3 in. (439 mm), height: 17.5 in. (445 mm), depth: 23.2 in. (590 mm), weight: 80 lb. (36 kg)

Environment Temperature: Storage: -4° to 122° F (-20° to 50° C), Operating: 50° to 90° F (10° to 32° C). Relative Humidity: Storage: 10% to 95%, Operating: 10% to 85%. Noise Level: 5.3 B standby, 7.0 B running.

Electrical Model: 110-127 VAC, 50/60 Hz, Model: 220-240 VAC, 50/60 Hz, Consumption: Printing: 400 Watts, Standby: 100 Watts, Power Saver: 25 Watts, ENERGY STAR® qualified printer.

Regulatory FCC Part 15, Subpart B, Listed to UL 60950/CSA-C22.2 No. 60950-00, CE Mark applicable to directives 73/23/EEC and 89/336/EEC, Class 1 Laser Product, EN 55022

Total Satisfaction Services

1-year On-site Warranty, online web technical support and telephone support. Innovative service offerings include optional extended Service Agreements and custom training for your internal Help Desk. The Phaser 6250 printer is backed by the Xerox Total Satisfaction Guarantee.



Copyright © 2005 XEROX CORPORATION. All rights reserved. Contents of this publication may not be reproduced in any form without permission of XEROX CORPORATION. Xerox®, Phaser®, CentreWare®, and PhaserSMART® are registered trademarks of XEROX CORPORATION. Total Satisfaction Services is a service mark of XEROX CORPORATION. SWOP® is a registered trademark of SWOP, Inc. All other trademarks are the property of their respective manufacturers. PANTONE® Colors generated may not match PANTONE-identified standards. Consult current PANTONE publications for accurate color. PANTONE® and other Pantone, Inc. trademarks are the property of Pantone, Inc. The information in this brochure is subject to change without notice. 9/03, 02/05, 4/05 625BR-01UC