

XEROX®

Technology | Document Management | Consulting Services

Phaser® 6100



color laser printer

Big color for small business...

...at a small price.



Phaser 6100 Color Laser Printer

Brilliant color at a super-low price.

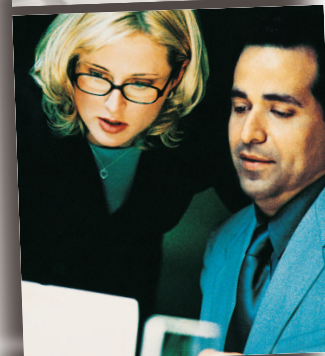
Now, a fully-featured color laser printer doesn't have to come with a hefty price tag. The Xerox Phaser 6100 Color Laser Printer produces page after page of impressive color output, and offers two-sided printing as a standard feature...yet it still comes at a surprisingly low price.



The full-function entry-level color laser printer

We've packed many of the business-grade features you'd expect to find in high-end color printers into the Phaser 6100 color laser printer, making it a fine addition to any small business or workgroup. The one thing we didn't leave room for is compromise.

- Up to 21 ppm black-and-white output and 5 ppm color. You don't sacrifice monochrome speed to add color.
- 64 MB of standard memory for better performance
- Standard automatic two-sided printing saves paper and simplifies production of professional-looking documents
- Quick response — first color page in under 24 seconds; 15 seconds for black-and-white
- Generous 250-sheet paper tray, plus 100-sheet multipurpose tray boosts productivity
- Super-quiet operation makes the Phaser 6100 color laser printer office-friendly

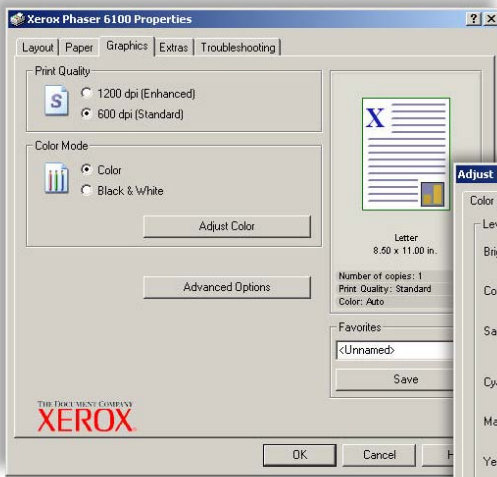




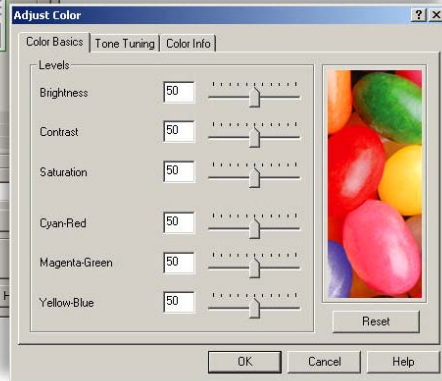
Better design means greater value.

The Phaser 6100 color laser printer is a quality machine from top to bottom. It leverages years of Xerox experience with color printing and laser technology to provide professional-quality print results ... despite its low price point.

- 1 The only color laser in its class to offer standard automatic two-sided (duplex) printing.
- 2 100-sheet Multipurpose tray offers wide media flexibility: custom paper sizes, envelopes, transparencies (black-and-white only) and labels.
- 3 Additionally, the Phaser 6100 laser printer provides a full 250-sheet paper tray.
- 4 Add an optional 500-sheet feeder to support expanding office needs.
- 5 250-sheet output bin for longer unattended operation.



Color setup is simple and automatic. Yet the Phaser 6100 color laser printer is flexible enough to allow you to fine-tune output to your custom specifications.



Outstanding print quality

Enjoy the crisp, sharp output that makes laser so popular among business users. You get vivid, high-impact prints that give every document a more professional look.

- 600 dpi Standard Mode produces excellent results; crisp, 1200 dpi Enhanced Mode for when the highest print quality is needed
- Xerox TekColor technology automatically gives you the best results every time you print
- Expert color calibration tools allow you to further fine tune your prints

Color without complications

The Phaser 6100 color laser printer has everything you need to enter the brilliant world of color printing right away. Out of the box, you're immediately productive.

- Intelligently engineered, simplifying both setup and everyday use — a few mouse-clicks is all it takes for any operation
- Network configured Phaser 6100 printers can be made accessible to everyone on the office network
- Toner and routine maintenance items are easily changed by users; high-capacity consumables are also available
- Embedded web server provides for easy management via any web browser (6100DN configuration)

need more information?

Find it at www.xerox.com/office

See the 6100 in action. Visit your Xerox reseller, or see a virtual demo: www.xerox.com/office/6100demo

Services & Support. Learn about Total Satisfaction Services™ award-winning programs: www.xerox.com/office/support

Get color connected. Take a look at Color Connection (exclusively for our printer owners), which includes access to a special web site, newsletters, tutorials, product upgrades and great ideas: www.colorconnection.xerox.com



Phaser 6100DN printer shown with optional 500-sheet feeder

Call today. For more information, call 1-877-362-6567 or visit us at www.xerox.com/office.



CONFIGURATIONS	Phaser 6100BD	Phaser 6100DN
Performance		
Print speed	Up to: 21 ppm Black-and-White / 5 ppm Full Color	
First page out	As fast as: 15 seconds Black-and-White / 24 seconds Full Color	
Memory	64 MB RAM	
Processor	120 MHz Processor	
Maximum duty cycle	Up to 35,000 pages/month	
Print Quality		
Resolution	1200 dpi Enhanced Mode, 600 dpi Standard Mode	
Networking		
Network connectivity	Bi-directional Parallel, USB 2.0	Bi-directional Parallel, USB 2.0, 10/100BaseTX Ethernet
Paper Handling		
Automatic 2-sided printing	Standard	
Paper input capability	100-sheet Multipurpose Tray; 250-sheet Tray 1	
Optional	Optional 500-sheet Feeder	
Productivity		
Standard features	Booklet printing, Watermarks, Custom Page Size Default Registers, Favorites (Driver macros), Poster, Scaling and Scale-to-fit, N-Up Printing, Selectable Jam Recovery, Consumable Life Reporting	
	CentreWare® IS Embedded Web Server, PrintingScout Alert Notification, Online troubleshooting	
Warranty	One year, Xerox Total Satisfaction Guarantee	

SPECIFICATIONS

Network/Software

Printer management (Phaser 6100DN only) CentreWare® IS Embedded Web Server, PrintingScout Alert Notification, CentreWare Web

Font capabilities Windows font

Printer drivers Windows 98/Me/NT/2000/XP/Server 2003, Mac OS 9.x/10.2 or higher [USB only], Linux

Languages Host-based

Paper handling

Multipurpose Tray (standard) 16 – 32 lb. Bond and up to 60 lb. Cover, (60 – 160 gsm), Phaser 35-Series Premium Transparencies (Black-and-white only), Labels, Envelopes. Media sizes: *Single-sided printing*: letter, legal, folio, Executive, Statement, A4, A5, A6, B5-ISO, B5-JIS. Envelopes: #10 Commercial, Monarch, DL, C5, C6 and custom sizes from 3.55 – 8.5 in. x 5 – 14 in. (90 – 140 mm x 216 – 356 mm); *Automatic 2-sided printing*: Letter, A4, Folio Legal 13 in., Legal 14 in.

Tray 1: 250-sheet tray *Single-sided printing*: 16 – 24 lb. Bond (60 – 90 gsm); *Automatic 2-sided printing*: 20 – 24 lb. (75 – 90 gsm). Media sizes: Letter, A4

Lower tray 500-sheet feeder (optional) 16 – 24 lb. Bond (60 – 90 gsm), Media sizes: Letter, A4; *Automatic 2-sided printing*: 20 – 24 lb. (75 – 90 gsm). Media sizes: Letter, A4

Special features

Productivity tools: Booklet printing, Watermarks, Custom Page Size Default Registers, Favorites (Driver macros), Poster, Scaling and Scale-to-fit, N-Up Printing, Selectable Jam Recovery

PrintingScout Pop-up troubleshooting Help window

Color controls

Print quality modes: Enhanced mode: 1200 dpi; Standard mode: 600 dpi

Color matching TekColor® technology: Color, Black and White, Color adjustment control

Operating

Dimensions width: 20 in. (510 mm), height: 16 in. (405 mm), depth: 18.5 in. (470 mm), weight: 70.5 lbs. (32 kg); (with consumables, 77.2 lbs. [35 kg])

Environment Temperature: Non-operating: -20° – 40° C (-4° – 104° F), Operating: 15° – 32.5° C (50° – 90° F); Relative Humidity: Non-operating: 10 – 80% RH, Operating: 20 – 80% RH

Noise Level: < 40 dB standby, 48 dB running

Electrical 200 – 240 VAC / 100 – 127 VAC at 50/60 Hz; Consumption: Printing 450 W max (with SCF); Power Save: 35 W max

Regulatory FCC Part 15 Subpart B, UL listed to UL 1950, UL Certified to CSA – C22.2 No. 950-M93, FDA 21 CFR Sub J, CE Mark applicable to directives 73/23/EEC and 89/336/EEC, TUV – GS Mark, IEC 950 Second Edition (EN 60950, EN 60825)

Customer Support

1-year depot Warranty, online web technical support and telephone support. Innovative service offerings include extended Service Agreements. The Phaser 6100 printer is backed by the Xerox Total Satisfaction Guarantee.

For information about Phaser Media for this product, go to www.xerox.com/office/6100

Consumables

Standard-Capacity Toner Cartridges*

Cyan (up to 2,000 pages)	106R00676
Magenta (up to 2,000 pages)	106R00677
Yellow (up to 2,000 pages)	106R00678
Black (up to 3,000 pages)	106R00679

High-Capacity Toner Cartridges*

Cyan (up to 5,000 pages)	106R00680
Magenta (up to 5,000 pages)	106R00681
Yellow (up to 5,000 pages)	106R00682
Black (up to 7,000 pages)	106R00684

*Capacities are approximate, based on 5% coverage on an A-sized page.

The print cartridges are part of the Xerox Green World Alliance Supplies Recycling Program. For more information, please visit the Green World Alliance web site at www.xerox.com/GWA

Routine Maintenance Items

Waste Cartridge (up to 5,000 pages)	106R00683
Imaging Unit (up to 50,000 pages black/up to 12,500 pages color)	108R00593
Transfer Belt (up to 50,000 pages black/up to 12,500 pages color)	108R00594

Options

500-Sheet Feeder Adjustable to Letter and A4 sizes	119650600
---	-----------

For the location of your nearest Xerox reseller, or for more information, visit our Web site or call: United States and Canada 1-877-362-6567. Other regions, see your local Xerox or Fuji/Xerox representative.



TOTAL SATISFACTION SERVICES



Note: The Total Satisfaction Guarantee is available in the United States and Canada. Coverage may vary outside these areas; please contact your local representative for details.

Copyright © 2005 XEROX CORPORATION. All rights reserved. XEROX®, CentreWare®, Phaser®, and TekColor® are trademarks of Xerox Corporation in the U.S. and/or other countries. Other product and/or company names used herein are trademarks of their respective owners. The information in this brochure is subject to change without notice. 04/04, 05/04, 04/05

61XBR-01UD