

laser printer

Productivity

without compromise



DocuPrint N4525

Network Laser Printer

The DocuPrint N4525 network laser printer from Xerox (a fifth generation Fuji-Xerox engine) has been perfected to handle the toughest performance requirements of high-volume networks.

Exceptional performance

The speed of today's business requires high productivity from its people and the devices that support them. The DocuPrint N4525's fast speed, sharp output, and time-saving features can keep your workgroup ahead of the curve.

- Industry-leading print speed of 45 ppm and a fast first page out time of 4 seconds ensures maximum productivity for the entire workgroup.
- Powerful 233 MHz G3 Class RISC processor delivers even complex jobs with graphics, photos and charts fast.
- Multi-set printing capabilities, with features like *Send Once*, *RIP Once*, *Print Many*, and job pipelining, streamline your work-flow. And for very large jobs, standard *Automatic Tray Switching* and *Load While Run* features enable nonstop printing.
- Crisp 1200 dpi Image Quality and Xerox Quad Dot halftoning deliver razor-sharp text and photo-quality images.
- Advanced graphics features like *Edge-to-Edge Printing* and *Booklet Printing* let you produce professional-looking newsletters and brochures.

Reliability and feature-packed ease of use

Extensive media input and output flexibility combined with reliable performance makes this the printer your workgroup can count on to meet the most challenging print demands.

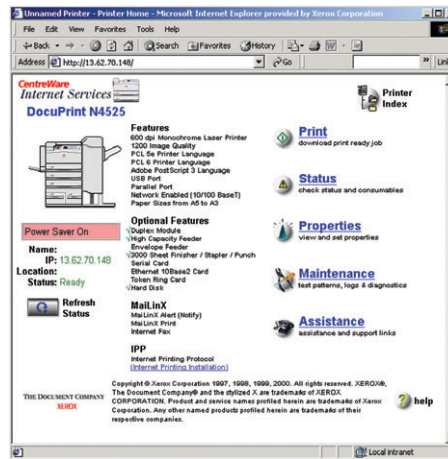
- Incredibly flexible, the N4525 can handle the printing needs of any diverse workgroup. With standard 10/100BaseTX Ethernet, USB, bi-directional parallel (optional Token Ring, Serial and 10Base2), it works in all environments including Windows NT, Novell, Mac OS, UNIX and OS/2. True Adobe® PostScript® 3™ and PCL5e, PCL6 emulations are standard.
- The hard disk can store fonts, forms and macros, enables Secure and Proof Print features, and guarantees uninterrupted printing and collation of large multi-set jobs.
- The N4525 offers a big advantage in ease-of-use and reliability. Even more, Xerox stands behind it with the unmatched Xerox Total Satisfaction Guarantee.



Technology that makes printing easy

The N4525 is packed with convenience and productivity features that help your workgroup get more done faster and easier than ever before.

- Booklet Printing, Secure Print, Fax-friendly Black, and Proof Print are just a few features that users can profit from to save valuable time and do great work.
- Xerox pioneered the Embedded Web Server, which offers you more ways to manage printers on your network using your favorite web browser.
- MaiLinX e-mail alerts can be automatically sent to system administrators who can correct problems before they impact productivity. PrinterMap enables proactive management, usage tracking and automatic reporting of all SNMP-based printers regardless of vendor.



The most extensive finishing and paper handling capabilities

Feed media from 17 lb bond to 110 lb cardstock (64 to 200 gsm) in sizes from postcard to 11 x 17 in. The N4525's reliable design lets you run envelopes, labels or cardstock effortlessly.

Extensive input and output options ensure maximum printing flexibility. Paper input: two standard 500-sheet paper trays **1** with size sensing, standard 50-sheet bypass feeder, **2** and optional three tray 2,500-sheet feeder **3** (standard on CN configuration) for high-volume capacity, and optional 100 envelope feeder (not shown).

For exceptionally fast two-sided printing, the automatic duplex module **4** is standard on all configurations except N.

Add a 3,000-sheet finisher/stacker **5** with collation, stapling and hole-punching to deliver jobs ready for distribution.



DocuPrint N4525FN (bundle)



need more information?
Find it at www.xerox.com/office

The DocuPrint N4525 is part of the Phaser family of office printers. For more information, see your Xerox reseller or visit www.xerox.com/office

See the N4525 in action. See your Xerox reseller, or visit our web site for more information: www.xerox.com/office/4525demo

Service & Support. Learn about Total Satisfaction Services™ award-winning service and support: www.xerox.com/office/support

Call today. For more information, call 1-877-362-6567 or visit us at www.xerox.com/office.



CONFIGURATIONS	N4525N	N4525DX	N4525CN	N4525FN (Bundle)*
Performance				
Print speed	45 pages per minute simplex; 39 images per minute duplex			
First page out	4 seconds (ready mode); 7 seconds (standby mode)			
Memory (Std / Max)	32 MB / 192 MB RAM		64 MB / 192 MB RAM	
Processor	PowerPC 740 233MHz G3 Class RISC processor, Adobe PostScript 3, PCL6 and PCL5e emulations			
Internal hard drive	Optional		Standard	
Monthly duty cycle	Up to 250,000 pages/month, engine life: 1.5 million impressions			
Print Quality				
Print resolution	1200 dpi Image Quality, 600 x 600 dpi, 300 x 300 dpi, Xerox Quad Dot halftoning, Xerox Image Enhancement			
Networking				
Network connectivity	10/100BaseTX Ethernet, Bi-directional Parallel, USB, (Token Ring, Serial, 10Base2 optional)			
Paper Handling				
Automatic 2-sided printing	Optional	Standard		
Paper input capability	(2) 500 sheet trays, 50 sheet bypass feeder			
				2,500 sheet feeder
Paper output capability	500 sheet face down bin			3,000 sheet finisher/stacker with stapling and hole punching
Warranty	One year on-site, Xerox Total Satisfaction Guarantee			

* The N4525FN bundle must be ordered as an N4525CN plus the Finisher (450S02180)

SPECIFICATIONS

Network/Software

Printer management Xerox CentreWare DP, CentreWare Internet Services, Xerox PrinterMap, CentreWare Sun OS/Solaris Services, SolarisReady certified, Microsoft certified, PrintXchange supported, VIPP supported, SAP R/3, Tivoli OpenView, CA Unicenter, Microsoft Management Console (MMC), SNMP-standard MIBs and Xerox extended MIBs

Font capabilities 35 Resident Adobe Type 1 fonts, 101 downloadable soft fonts, 45 PCL fonts, 10 Microsoft TrueType fonts, 35 Intellifonts, 1 PCL compatible bitmap font

Printer drivers Windows 95/98/Me, Windows 2000, Windows NT 4.0, UNIX (Solaris, SCO UnixWare, HP/UX, IBM AIX, SGI, Dec Unix, Compaq True Unix 64, Linux (i386), Linux (PPC)) Macintosh (System 7.x/8.x/9.x)

Languages Genuine Adobe® PostScript® 3™, PCL5e and PCL6 emulations with automatic sensing and switching.

Paper handling

Media types 17-53 lb (64-200gsm) bond and cardstock, coated or glossy papers, labels, envelopes, transparencies

Media sizes letter, executive, legal, statement, folio, ledger, 8.5 x 5.5in, postcard, A3, A4, A5, A6, B4, B5. Edge-to-edge printing on all paper sizes

Finisher

(standard on FN bundle) 3,000 sheet Finisher/Stacker with Stapling and Hole-Punching: up to 50 sheets stapled per set, 3 staple positions, hole-punching capability included.

Special features

Productivity tools for the user: *Send Once, RIP Once, and Print Many* capability; Job pipelining to process multiple jobs concurrently; MailInX – emails jobs to printer and sends alerts and status via email; Proof Print™; Secure Print™; Draft/toner saver modes; Separator sheets (for transparencies); Booklet printing; Auto tray select; Cover sheets; Print Anyway; Variable fusing; Edge-to-edge printing; Load While Run; Smart Jam Diagnostics; Fax-Friendly Black; N-Up (*needs hard disk)

Productivity tools for the IT manager: Web-based Printer Administration via Embedded Web Server, MailInX e-mail alerts, PrinterMap, IPP support

Operating

Dimensions width: 25.4in/645mm, height: 19.1in/486mm, depth: 21.0in/533mm, weight: 117lb/53kg

Environmental Temperature: 5° to 35°C / 41° to 95°F, Relative Humidity: 15% to 85% (noncondensing), Noise Level: 28 dB(A) standby, 55 dB(A) running, 58dB(A) with High Capacity Feeder or Finisher

Electrical 108-135/ VAC, 50/60 Hz, 198-264 VAC 50/60 Hz, Sleep mode, ENERGY STAR® Qualified

Regulatory FCC Part 15, Subpart B, UL listed to UL 1950, Certified to CSA—C22.2 No. 950, FDA 21 CFR Sub J, CE Mark applicable to directives 73/23/EEC and 89/336/EEC, TUV - GS Mark, IEC 950 Second Edition (EN 6095, EN 60825)

Customer support

1-year On-site Warranty, online web technical support and telephone support. The DocuPrint N4525 printer is backed by the Xerox Total Satisfaction Guarantee.

SUPPLIES

Consumables	
Print Cartridge (30,000 capacity)	113R00195
Routine Maintenance Items	
Staple Cartridge (300,000 capacity)	109R00048
3 cartridges, 5,000 staples per cartridge	108R00158
Maintenance Kit (300,000 capacity) contains: fuser cartridge, bias transfer roll, 15 feed rolls (3 for each paper input tray), gloves, cleaning cloth, instructions	109R00048
Capacities are approximate, based on a 5% coverage of an A-size page.	
Options	
2,500-sheet Feeder	097S02560
100 Envelope Feeder	097S02567
Duplex Module	097S02561
200-sheet Face-up Bin	097S02564
3000-sheet Finisher/Stacker with Stapler and Hole Puncher (3 hole position)	450S02180
Internal Hard Disk	097S02803
16-MB DIMM	097S02356
32-MB DIMM	097S02357
64-MB DIMM	097S02358
8-MB Flash DIMM	097S02360
Token Ring Interface Card	097S02363
Ethernet 10Base2 Interface Card	097S02362
RS232-C Serial Interface Card	097S02361

For media offerings, see our web site: www.xerox.com/office

For the location of your nearest Xerox reseller, or for more information, visit our web site or call: United States and Canada **1-877-362-6567**, other regions see your local Xerox or Fuji/Xerox representative.



XEROX®, The Document Company®, the stylized X, CentreWare®, DocuPrint™ and PrinterMap are trademarks of XEROX CORPORATION. As an ENERGY STAR® Partner, Xerox has determined that this product meets the ENERGY STAR® guidelines for energy efficiency. Other product and/or company names used herein are trademarks of their respective owners. Product appearance and/or specifications subject to change without notice. 9/03 452BR-01UC