

XEROX®

WorkCentre® Pro 423/428

Technology | Document Management | Consulting Services

print | copy | scan | fax | internet fax

Multiple functions.
One level of **productivity...**
the highest.



The hub of your office productivity

The Xerox WorkCentre Pro 423/428 takes functions that have always been obstacles to office productivity and moves them to a new level of efficiency in one multifunction system. It offers all the advantages of networked document management by integrating digital printing, copying, scanning, and faxing in a single easy-to-use system. Your demanding office environment just got a little less demanding.

Xerox WorkCentre Pro 423/428

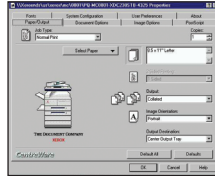
Growing productivity, shrinking costs through workgroup printing for the entire office.

Xerox multifunction systems help you find better ways to do great work.

- Simple base configurations bring you all the essential features your office needs and a variety of options increase productivity even further.
- Saves time by eliminating the hassle of managing multiple, redundant devices.
- Reduces costs through one consumable package.
- Boosts up-time: Xerox multifunction systems are reliable digital devices. Fewer moving parts means less downtime and greater productivity.



Add a finisher and boost productivity! Automatically staple collated sets as thick as 30 sheets.



Internet Protocol Printing

Submit documents to be printed via the Internet when you're off-site



Network Printing

Information can be shared efficiently via the Internet and Intranet



Network PC

Hardcopy files can be scanned, stored, retrieved, printed and shared



Internet Fax

Reduce costs by faxing and scanning via the Internet



Copy/Scan

Give your hardcopy a new, digital life



Fax

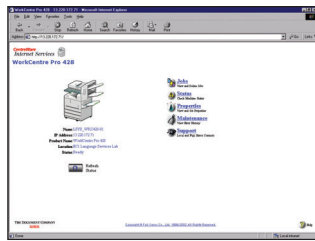
High quality walk-up faxing



So many features... so little cost

Optimize printing performance for workgroups.

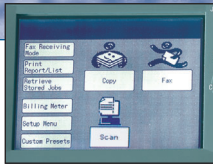
Don't just print. Produce. Really produce... with **network printing** and features that traditionally come with a higher price.



- An Embedded Web Server (EWS) allows you to monitor print jobs and run status using a PC browser. Users can set print and fax functions from the PC. Network administrators can better understand and support the office's printing needs.
- Print via the Internet from any location using Internet Protocol Printing (IPP).
- Secure Print holds confidential documents until you release them using a password. Sample Print reduces waste by printing one set for examination before printing the rest.
- Add watermarks to documents to clearly label them as "Confidential" or "Urgent."
- Connect directly to a workstation with either a **parallel** or **USB connection**, or to a **wide range of network environments** such as TCP/IP, Ethernet, Novell, and many others with the built-in Network Interface Card.

Multiply your productivity.

The WorkCentre Pro 423/428 gives you high quality copies... quickly and reliably.

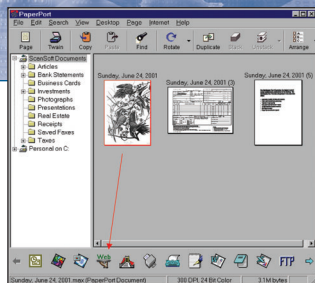


Customize the touch screen to display the features you use most.

- Digital features give your documents new life. Get sharper image quality and crisper looking copies. Print multiple sets without manual sorting or create booklets quickly and easily.
- Simplify your everyday document production. Copy transparencies and multiple handouts with a single operation.
- Create double-sided documents at near rated speeds.

Convert hardcopy to digital.

Optional WorkCentre Pro 423/428 features come bundled with industry-leading scanning software, ScanSoft's PaperPort Deluxe 7.0 and TextBridge Pro Millennium Business Edition.



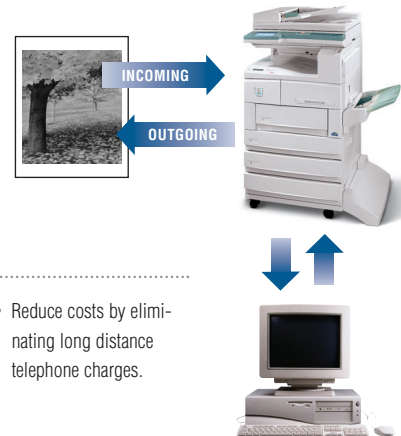
- Scan 1 or 2-sided and up to Ledger size originals. Use CentreWare Scanning Services 5.3 to store the TIFF files on the network.
- Use PaperPort Deluxe to view scanned documents, then drag and drop them into other desktop or network applications.
- OCR text documents with TextBridge and make them editable and available to all of your applications.



Faxing as convenient as a phone call, as fast as an email.

*Traditional **phone faxing** has never been easier for you, or more beneficial for your bottom-line.*

- Fax 2-sided, Ledger, or bound documents at up to 600 dpi so your faxes, both in and out, look professional.
- PC Faxing allows you to eliminate the hardcopy and fax directly from your PC at 33.6 Kbps.
- Expecting a confidential document? Fax to Mailbox stores faxes securely until you are ready to receive them.



A Total Office Document Management Solution.

The WorkCentre Pro 423/428 offers the features and intelligence to manage your documents at new levels of efficiency from data capture, information sharing, storing, printing and copying.

*Faxing is surprisingly easy when it uses the **Internet** instead of the phone lines.*

- Receive incoming faxes as fast as email. No more busy signals that block productivity.
- Reduce costs by eliminating long distance telephone charges.

Call today. For US and Canada product information call **1-877-362-6567**. Or visit us at **www.xerox.com/office**



WorkCentre® Pro 423/428

Printer Specifications for Printer/Copier Configurations

Speed	23/28 pages per minute
Resolution	2400 x 600 dpi interpolated with image enhancement technology
Print Drivers	PCL6 for Win 95/98/NT 4.0/2000/ME/XP (standard) PostScript for Win 95/98/NT 4.0/ 2000/ME/XP (optional) PostScript for Mac available only for Appletalk.
Network Protocols	SMB, TCP/IP, Netware 3.x, 4.x, 5.x, DHCP, IPP1.1, HTTP, AppleTalk/EtherTalk
Administration Protocols	DHCP, BOOTP, SNMP, WINS, DDNS
Page Description Languages (PDL)	PCL 6 (PCL 5e, HP-GL2) PostScript Level 3 (optional)
Device Management	Xerox CentreWare Web, Xerox CentreWare for Unicenter TNG, Tivoli NetView, and HP OpenView
Device Memory	96 MB and 15 GB print hard drive standard
Interfaces	USB, IEEE 1284 Parallel 10/100 Base T, Wireless Ethernet (IEEE 802.11b) via third-party adapters
Output Management Solutions	SAP Intelligent Barcode Utility provides built-in process intelligence that allows the printing of barcodes on any appropriately configured Adobe PostScript printer on the SAP network.
Minimum System Requirements	386/DX or better Processor, 8 MB RAM, CD ROM Drive, 9 MB free Hard Disk space

Copier Specifications

Speed	
Copies Per Minute (cpm)	23/28 cpm (Letter LEF) 12/15.5 cpm (Ledger 11 x 17")
First Copy Out	Approximately 4.5 sec or less
Reduce/Enlarge	Preset modes, plus Zoom R/E in 1% increments (25% - 400%)
Productivity	Scan Once/Print Many Electronic Pre-Collation
Platen Size (Max original)	11 x 17"
DADF Size (Max original)	11 x 142" (simplex), 11 x 17" (duplex)
Image Quality Controls	Text, Photo, Text and Photo
Copy Quantity	1-99

Network Scanner (Optional)

Scanning Size	Statement (5.5 x 8.5") to Ledger (11 x 17")
Scanning System	Fixed CCD Scan
Data Compression	MH, MR, MMR, JBIG
Resolution/Halftone	600 dpi, 400 dpi, 300 dpi, 200 dpi, 256 Tones
Scanning Speed	130mm/s = 36 sheets/min (Letter LEF) (1.65sec/Letter LEF)
Compatible OS/Client	Windows, 95/98/ME/XP, Windows NT 4.0, Windows 2000
Protocol	TCP/IP
Scanning Mode	Text, Text & Photo, Halftone
Scanning Software	Xerox CentreWare® 5.3, ScanSoft PaperPort Deluxe 7.0, TextBridge Pro Millennium Business Edition

Fax (Optional)

Transmission Speed	4 sec. per page (ITU-T (CCITT) No.1. Standard resolution) Up to 33.6K bps
Modem Speed	MH, MR, MMR, JBIG
Data Compression	Letter, Legal, Ledger
Sending Document Size	200 x 100 dpi standard, 200 x 200 dpi, 400 x 400 dpi, 600 x 600 dpi
Transmit Resolution	200 dpi; 16, 12, 8 lines / mm
Receive Resolution	600 dpi, 400 dpi, 300 dpi, 200 dpi; 16, 12, 8 lines / mm
Memory	Standard: 202 pages (2 MB / MMR) Optional: 960 pages (1GB Fax Hard Disk Drive / MMR)
Dialing	
Speed Dials	200
One Touch Dials	70
Group Dials	50
Document Size	Letter (SEF), Legal (SEF), Ledger (SEF)
Document Length	Maximum: 142"
Requirements	Printer/copier configuration also requires Print Fax Interface Cable

Internet Fax (Optional)

Maximum Document Size	Ledger (11 x 17")
Scanning Density	600 dpi, 400 dpi, 300 dpi, 200 dpi; 16, 12, 8 lines/mm
Format	Ledger (11 x 17")
Profile	TIFF-FX TIFF-S; TIFF-F; TIFF-J (independent expansion 600 x 600 dpi)
Protocol	Transmission: MIME method, SMTP method Reception: SMTP, POP3

Services Provided	
Scan to Email	Email sending of scanned image data
Email to Print/Box	Print/storing Email to a confidential box
Email to Fax	Fax transmission of Email received document
Fax to Email	Email transmission of a fax received document
Requirements	- Printer/Copier configuration - Fax & Scan kit - Internet fax kit - Network connection with communication through TCP/IP - The environment should allow the sending and receiving of E-mails.

Media Handling

Input Paper Capacity	
Standard trays	Three 500 sheet trays
Bypass tray	100 sheets
Output Capacity	500 sheets
Paper Weight	
Standard trays	60 g/m ² -150 g/m ² or 16 lbs to 40 lbs
Bypass tray	60 g/m ² -150 g/m ² or 16 lbs to 40 lbs



Specifications

Paper Sizes	
Tray 1	Statement (5.5 x 8.5") - Letter (8.5 x 11")
Tray 2-4	Letter (8.5 x 11"), Legal (8.5 x 14"), Ledger (11 x 17") 8.5 x 5.5" - 11 x 17"
Bypass tray	
Duplex Automatic Document Handler	50 sheets

General

Weight (Base Configurations)	
Copier	225 lbs. or 120 kg
Printer/Copier	237 lbs. or 107.5 kg
Dimensions (L x D x H)	755 x 669 x 1125 mm 29.7 x 26.3 x 44.3"
Voltage	110V to 127V +6%/-10%, 50/60 Hz
Power Consumption	1500 watts maximum
Power Saver Mode	WCP 423: 93 watts max. WCP 428: 112 watts max.
Operating Environment	
Temperature	10° - 35°C (50° to 95°F)
Relative Humidity	15% - 85% RH (non condensing)
Exp. Monthly Volume	15,000
Duty Cycle	100,000

Supplies

Approximate Yield:	
Toner/Drum Single Cartridge	24K @ 6% area coverage *28.8K @ 5% area coverage *calculated
Optional Staple Cartridge	3,000 staples per cartridge, 3 cartridges per package

Safety & Certifications

- Listed by Underwriters Laboratories, Inc. in compliance with requirements for the USA and Canada.
- Windows Hardware Quality Labs

Accessories

Fourth Input Tray (500 sheets)	Complements standard 1600 page input supply
Finisher/Stapler	2 bins: 200 sheet capacity – face up and 500 sheet capacity – staples up to 30 sheets
PostScript 3 Kit	PostScript 3 for printer device
Network Print Kit	Required to enable print functionality. Includes NIC card, 64MB expansion memory, 15GB Print Hard Disk. This kit is standard with the Printer/Copier configuration (Pi).
Fax & Scan Kit	Required to enable standalone fax and Scan to mailbox
Internet Fax Kit	Required to enable Scan to email, email to Print/Box, email to Fax, Fax to email
CentreWare Scan Services	Required to enable Network Scanning (Scan-to-File/Server). Network Administrator or Analyst with administrative rights is required to facilitate proper setup.
Fax Hard Disk Drive (1GB)	Increases fax memory from 200 to 960 pages. Recommended to enable transmission of higher resolution images and to increase mailbox memory for scanning to mailbox jobs.

Configuration availability may vary by location.

© 2005 Xerox Corporation. All rights reserved. XEROX®, WorkCentre®, and CentreWare® are trademarks of Xerox Corporation. In support of Xerox's environmental leadership goals, the Xerox WorkCentre Pro 423/428 may contain some recycled components that are reconditioned. Windows and Windows NT are trademarks of Microsoft Corp. PaperPort® and TextBridge® are registered trademarks of ScanSoft, Inc. All other trademarks or registered trademarks are the property of their respective owners. Xerox Corporation reserves the right at any time to change the specifications of the equipment described herein without notice. 12/03, 5/04, 9/04, 4/05 610P715550C 423BR-01UD