

Overview

PRINT

COPY

SCAN

FAX

INTERNET FAX



Multiple functions.  
One level of **productivity**...  
the highest.





## The hub of your office productivity

The Xerox WorkCentre Pro 423E/428E takes functions that have always been an obstacle to office productivity and moves them to a new level of efficiency in one multifunction device. It offers all the advantages of networked document management by integrating digital printing, copying, scanning and faxing in a single easy to use system. Your demanding office environment just got a little less demanding.

# WorkCentre Pro 423E/428E



### Growing productivity, shrinking costs.

Why purchase and maintain two devices when one can do a better job?

- Eliminate the hassle of managing multiple, redundant devices.
- Consolidate assets by replacing inefficient standalone printers and light lens copy machines.
- Trim costs through one consumable package and a single service contract.

*Add a finisher and boost productivity! With two output trays that hold up to 700 sheets, you can automatically staple collated sets as thick as 30 sheets in the corner of your choice.*

### It's time to take your copies digital.

If your business hasn't gone digital, now's your chance. Enter a new, better way of producing documents with the Xerox WorkCentre Pro 423E/428E:

- Get sharper image quality and crisper looking copies.
- Digital features give your documents new life... print multiple sets without manual sorting or create booklets quickly and easily.
- Create two-sided documents and save paper and time. The WorkCentre Pro 423E/428E produces images at virtually the same speed whether you are making single or two-sided output. You won't notice a decrease in speed without a stopwatch...

# copy



### Don't just print. Produce.

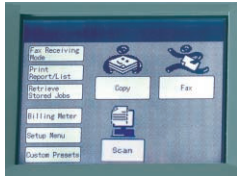
Really produce... at unprecedented levels with the help of features that traditionally come with a higher price tag. The WorkCentre Pro 423E/428E is a PCL6 network-ready printer offering multiple functions and ultimate productivity.

- Transition from one print job to the next significantly faster than many competitors.
- Enhance your documents. Add watermarks. Print transparencies and handouts with a single operation. Print face-up or face-down for confidentiality.
- Connect directly to a workstation with either a parallel or USB connection, or to a wide range of network environments such as TCP/IP, Ethernet, Novell, and many others with the built-in Network Interface Card.
- Print to the WorkCentre Pro 423E/428E via the Internet, using Internet Protocol Printing (IPP).
- An embedded Web server (EWS) uses a PC browser to monitor print jobs and run status. This allows the network administrator to better support the office's printing needs.

# print

# Xerox WorkCentre Pro 423E/428E

MULTIFUNCTION SYSTEM

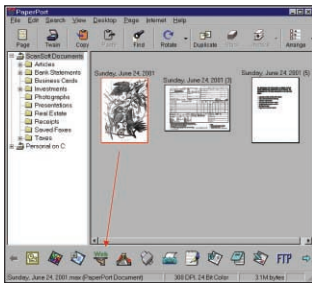


## Power with an easy touch.

The WorkCentre Pro 423E/428E gives you the power to make advanced feature selections with one of the easiest touch screens ever.

- Customise the touch screen to display the features you use most for quicker access and selection.

# scan



## Convert hardcopy to digital.

Optional WorkCentre Pro 423E/428E features come bundled with industry-leading scanning software, ScanSoft's PaperPort Deluxe 7.0 and TextBridge Pro Millennium Business Edition.

- Scan 1 or 2-sided and up to A3 size originals. Use CentreWare Scanning Services 5.3 to store the TIFF files on the network.
- Use PaperPort Deluxe to view scanned documents, then drag and drop them into other desktop or network applications integrate scanned files with FlowPort™ Xerox Image Routing Software or send them to a DocuShare® site.
- OCR text documents with TextBridge and make them editable and available to all of your applications.

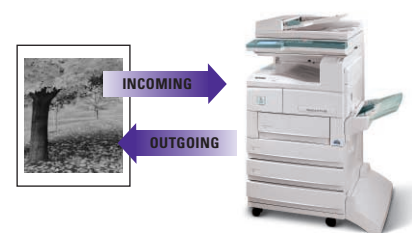
Traditional **phone faxing** has never been easier for you, or more beneficial for your bottom-line.

### A Total Office Document Management Solution.

The WorkCentre Pro 423E/428E offers the features and intelligence to manage your documents at new levels of efficiency from data capture, information sharing, storing, printing and copying.

## Faxing as convenient as a phone call, as fast as an email.

- Fax 2-sided, A3, or bound documents at up to 600 dpi so your faxes, both in and out, look professional.
- PC Fxing allows you to eliminate the hardcopy and fax directly from your PC at 33.6 Kbps.
- Expecting a confidential document? Fax to Mailbox stores faxes securely until you are ready to receive them.



*Faxing is surprisingly easy when it uses the Internet instead of the phone lines.*

- Receive incoming faxes as fast as email. No more busy signals that block productivity.
- Reduce costs by eliminating long distance telephone charges.



# fax

For more information, please visit our Web site at  
[www.xerox.com/office](http://www.xerox.com/office)

United Kingdom Tel: 0870 241 3245

Eire Tel: 0818 300015



# Xerox WorkCentre Pro 423E/428E

MULTIFUNCTION SYSTEM

## Specifications

### Printer Specifications for Printer/Copier Configurations

<b>Speed</b>	23/28 pages per minute
<b>Resolution</b>	2400 x 600 dpi interpolated with image enhancement technology
<b>Print Drivers</b>	PCL6 for Win 95/98/NT 4.0/2000/ME/XP (standard)
<b>Network Protocols</b>	SMB, TCP/IP, Netware 3.x, 4.x, 5.x, DHCP, IPP1.1, HTTP, AppleTalk/EtherTalk
<b>Page Description Languages (PDL)</b>	PCL 6 (PCL 5e, HP-GL2)
<b>Device Memory</b>	32 MB standard; optional 64 MB increment & 15 GB Print Hard Disk
<b>Interfaces</b>	USB, IEEE 1284 Parallel 10/100 Base T
<b>Minimum System Requirements</b>	386/DX or better Processor, 8 MB RAM, CD ROM Drive, 9 MB free Hard Disk space

### Copier Specifications

<b>Speed</b>	23/28 cpm (A4) 12/15.5 cpm (A3)
<b>First Copy Out Reduce/Enlarge</b>	Approximately 4.5 sec or less Preset modes, plus Zoom R/E in 1% increments (25% - 400%)
<b>Productivity</b>	Scan Once/Print Many Electronic Pre-Collation
<b>Offset Output</b>	Jobs or collated sets
<b>Platen Size (Max original)</b>	A3/297 x 420mm
<b>DADF Size (Max original)</b>	297 mm x 3600 mm (simplex), 297 mm x 432 mm (duplex)
<b>Image Quality Controls</b>	Text, Photo, Text and Photo
<b>Copy Quantity</b>	1-99
<b>Two-sided</b>	On duplex configurations only

### Network Scanner

<b>Scanning Size</b>	A5 to A3
<b>Scanning System</b>	Fixed CCD Scan
<b>Data Compression</b>	MH, MR, MMR, JBIG
<b>Resolution/Halftone</b>	600 dpi, 400 dpi, 300 dpi, 200 dpi, 256 Tones
<b>Scanning Speed</b>	130mm/s = 36 sheets/min (A4 LEF) (1.65sec/A4 LEF)
<b>Compatible OS/Client</b>	Windows, 95/98/ME/XP, Windows NT 4.0, Windows 2000 TCP/IP
<b>Protocol</b>	Text, Text & Photo, Halftone
<b>Scanning Mode</b>	Xerox CentreWare® 5.3, ScanSoft PaperPort Deluxe 7.0, TextBridge Pro Millennium Business Edition

### Phone Fax (Optional)

<b>Transmission Speed</b>	4 sec. per page (ITU-T (CCITT) No.1. Standard resolution)
<b>Modem Speed</b>	Up to 33.6K bps
<b>Data Compression</b>	MH, MR, MMR, JBIG
<b>Sending Document Size</b>	A3, B3, A4
<b>Transmit Resolution</b>	200 x 100 dpi standard, 200 x 200 dpi, 400 x 400 dpi, 600 x 600 dpi
<b>Receive Resolution</b>	600 dpi, 400 dpi, 300 dpi, 200 dpi; 16, 12, 8 lines / mm
<b>Memory</b>	Standard: 590 pages (10 MB / MMR) Optional: 960 pages (1GB Fax Hard Disk Drive / MMR)
<b>Dialing</b>	
<b>Speed Dials</b>	200
<b>One Touch Dials</b>	70
<b>Group Dials</b>	50
<b>Document Size</b>	A3 (SEF), B4 (SEF), A4 (SEF)
<b>Requirements</b>	Printer/copier configuration also requires Print Fax Interface Cable

### Internet Fax (Optional)

<b>Maximum Document Size</b>	A3 (297 x 420 mm)
<b>Scanning Density</b>	600 dpi, 400 dpi, 300 dpi, 200 dpi; 16, 12, 8 lines/mm A3 TIFF-FX
<b>Format Profile</b>	TIFF-S; TIFF-F; TIFF-J (independent expansion 600 x 600 dpi)
<b>Protocol</b>	Transmission: MIME method, SMTP method Reception: SMTP, POP3
<b>Services Provided</b>	
<b>Scan to Email</b>	Email sending of scanned image data
<b>Email to Print/Box</b>	Print/storing Email to a confidential box
<b>Email to Fax</b>	Fax transmission of Email received document
<b>Fax to Email</b>	Email transmission of a fax received document
<b>Requirements</b>	- Network connection with communication through TCP/IP - The environment should allow the sending and receiving of E-mails.

### Media Handling

<b>Input Paper Capacity</b>	
<b>Standard trays</b>	Three 500 sheet trays
<b>Bypass tray</b>	100 sheets
<b>Output Capacity</b>	500 sheets
<b>Paper Weight</b>	
<b>Standard trays</b>	60 g/m <sup>2</sup> -156 g/m <sup>2</sup>
<b>Bypass tray</b>	55 g/m <sup>2</sup> -156 g/m <sup>2</sup>
<b>Paper Sizes</b>	
<b>Tray 1</b>	A5 - A4
<b>Tray 2-4</b>	B5 - A3
<b>Bypass tray</b>	216 mm x 140 mm - A3
<b>Duplex Automatic Document Handler</b>	50 sheets

### General

<b>Weight (Base Configurations)</b>	
<b>Copier</b>	101.5 kg
<b>Printer/Copier</b>	107.2 kg
<b>Printer/Copier/Fax</b>	112.2 kg
<b>Dimensions (L x D x H)</b>	755 x 669 x 1125 mm
<b>Power</b>	220V to 240V +6%/-10%, 50/60 Hz
<b>Power Consumption</b>	1500 watts maximum
<b>Power Saver Mode</b>	WCP 423E: 93 watts max. WCP 428E: 112 watts max.
<b>Operating Environment</b>	
<b>Temperature</b>	10° - 32°C (50° to 90°F)
<b>Relative Humidity</b>	10% - 85% RH (non condensing)
<b>Exp. Monthly Volume</b>	2,500 - 7,500
<b>Supplies</b>	
<b>Approximate Yield:</b>	
<b>Toner/Drum Single Cartridge</b>	24K @ 6% area coverage 28.8K @ 5% area coverage
<b>Optional Staple Cartridge</b>	3,000 staples per cartridge, 3 cartridges per package

### Safety Approvals

<b>Product</b>	
<b>220-240V, 50Hz</b>	Certified by TUV, IEC60950/ EN60950 including national deviations applicable in all major countries. CE marked for all markets.
<b>Laser</b>	
<b>110-240V, 50/60Hz</b>	FDA 21CFR 1010 AND 1040 IEC60825

### Accessories

<b>Finisher/Stapler</b>	2 bins: 200 sheet capacity - face up and 500 sheet capacity - staples up to 30 sheets (requires Print Hard Disk and 64 MB Memory Upgrade)
<b>PostScript 3 Kit</b>	PostScript 3 for printer device (requires 64 MB memory upgrade)
<b>Print Hard Disk (15 GB)</b>	Required to do secure printing, proof printing and electronic collation of print jobs (requires 64 MB memory upgrade)
<b>64 MB Memory Upgrade</b>	Required to do secure printing, proof printing and electronic collation of print jobs
<b>1 GB Fax Hard Drive</b>	Upgrades page memory from 590 to 960 pages



Worldwide Partner

Configuration availability may vary by location.

© 2003 XEROX CORPORATION. All rights reserved. XEROX®, The Document Company®, WorkCentre® and the digital X® are trademarks of XEROX CORPORATION. In support of Xerox's environmental leadership goals, the Xerox WorkCentre Pro 423E/428E may contain some recycled components that are reconditioned. Windows and Windows NT are trademarks of Microsoft Corp. All other trademarks or registered trademarks are the property of their respective owners. XEROX CORPORATION reserves the right at any time to change the specifications of the equipment described herein without notice. 06/03

42EBR-01EA