

Xerox® Phaser®  
3635MFP  
Letter-size  
Black-and-white  
Multifunction Printer



# Phaser 3635MFP Multifunction Printer Evaluator Guide



# About this Guide

**This guide will introduce you to the Xerox® Phaser® 3635MFP multifunction printer,** describe its capabilities and features, and help you in your printer evaluation process.

## Section 1: Introducing the Xerox® Phaser® 3635MFP Multifunction Printer

- 3 Product Overview
- 5 Phaser 3635MFP Configurations

## Section 2: Evaluating Black-and-white MFPs

- 6 Overview
- 7 Deployment, Management and Ease-of-use
- 9 Evaluate Productivity
- 10 Evaluate Versatility
- 12 Evaluate Reliability
- 13 Evaluate Security

## Section 3: Configurations, Specifications, Supplies, Support and Additional Information Sources

- 14 Configuration Summary
- 15 Specifications
- 15 Supplies and Accessories
- 16 Support and Additional Information Sources

# Section 1: Introducing the Xerox® Phaser® 3635MFP Multifunction Printer

## Product Overview

**Print. Copy. Scan. Fax. Email.** The Xerox® Phaser 3635MFP multifunction printer gets critical office tasks done with speed and efficiency, delivering a powerful all-in-one solution at a hard-to-beat price.

### More capabilities for more people.

A powerful workgroup multitasker, the Phaser 3635MFP multifunction printer delivers a set of features that, until now, you'd find only on large, departmental MFPs.

Fast results. A quick print and copy speed of up to 35 ppm easily keeps pace with the demands of a busy workgroup, while a single-page print job is out as quickly as 8.5 seconds.

Powerful scanning. Capture and share hard copies with advanced scanning tools. Scan files to public or private network folders, or to a USB memory drive, or copy them directly on the device for fast and easy retrieval when you need them. Plus, Scan to Email lets you email documents right from the front panel – no computer needed.

Digitize, organize, distribute. Maximize your hardware investments, and manage and distribute documents more effectively, with innovative Xerox® Workflow Solutions (built on Xerox Extensible Interface Platform® (EIP) technology) and software solutions from Xerox Business Partners. When you integrate paper and digital documents, you can easily create, search, reuse, share, and build upon your office documents while containing costs and accelerating workflows.

Enhanced security. Hold private print and fax jobs in the queue until they're released at the device by the job owner. Image data from the device's memory can be automatically "shredded" after every job or on request, and you can easily limit or restrict access to device functions for enhanced security.

Impressive results. 600 x 600 dpi (up to 1200 x 1200 enhanced image quality) delivers outstanding print resolution without slowing down the all-around exceptional performance.

Save paper, save money. Standard automatic two-sided printing and copying reduces paper usage, while helpful features like N-up and booklet printing let you easily create documents like handouts and presentation packs.

### The Xerox experience: a familiar advantage.

With the same walk-up simplicity our larger devices are known for, the Phaser 3635MFP multifunction printer delivers all-in-one productivity that's totally Xerox.

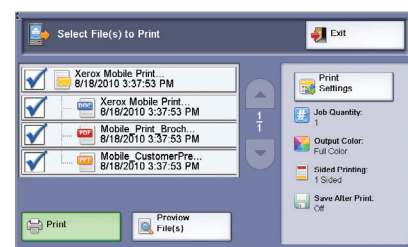
Big functions, small size. Whether on a desktop or as a floor-standing unit (with optional cabinet stand), the small size fits where you need it and replaces single-function machines with one convenient multifunction solution.

Truly helpful. The 7-inch, full-color, touch screen control panel makes walk-up operation extremely intuitive. Need assistance? Press the Help button and access online answers to common questions. Messages, screen instructions and graphics provide even more useful information.

More control. Xerox® Standard Accounting software provides accounting features that let you track and analyze device usage by function for greater cost control.

Workflows made easy. Simple controls let you set up the touch-screen to prioritize the functions users need most, while a host

**Xerox® Workflow Solutions** take your Phaser 3635MFP multifunction printer to a higher level of office optimization.



**Xerox® Mobile Print Solution** is just one of many personalized solutions you access right from the touch screen interface.

Transform the way your organization gets vital work done with the power of Xerox® Workflow Solutions. When people work efficiently, in less time and with fewer steps, productivity goes up. Stress goes down. So do errors. Whether you have only a few people on your team or a very large workgroup, Xerox knows it's about streamlining your workflow – and it starts by using Xerox® Workflow Solutions right from your Phaser 3635MFP multifunction printer.

### Xerox® Mobile Print Solution

With Xerox, being mobile has never been easier. Xerox makes mobile printing simpler and more convenient, while keeping your business secure. That's why we're empowering today's mobile professionals with the freedom to send print jobs from any email-enabled device.

of optional solutions offered by Xerox and third-party providers make the Xerox® Phaser® 3635MFP even more useful.

A trusted brand. Outstanding quality, reliability and performance are backed by a standard one-year warranty, and the unmatched three-year Xerox® Total Satisfaction Guarantee.

**Easy to operate and maintain.**

The Phaser 3635MFP multifunction printer is designed top to bottom for optimum ease of use, seamless network integration and unbeatable reliability.

IT-friendly. Network printing is easier than ever to manage. Xerox® CentreWare® IS internal web server allows administrators to remotely monitor printer status, configure settings and receive alerts. For enterprise-level printer management, CentreWare Web makes it easy to install, configure, obtain reports and troubleshoot all network devices, regardless of manufacturer.

Ready for action. Installation is extremely fast and easy, getting your device up and running on the network in minutes.

Easy supplies replacement. All-in-one, user-replaceable print cartridges greatly reduce time spent on device interventions. Simply replace one cartridge and you're back in business.

More productive, longer. With a robust monthly duty cycle of up to 75,000 pages, the Phaser 3635MFP is built to produce at a consistently high level.

An easy fit. Network integration has never been easier, and with built-in LDAP support, your system administrator can upload your company's address book directly to the device for fast access to recipients' email addresses and fax numbers.

The Xerox-exclusive Print Around feature holds a job needing resources (such as a different paper size) and prints the next job in the queue.

**Phaser 3635MFP  
Quick Facts**

- Print and copy up to 35 ppm
- 600 x 600 dpi (up to 1200 x 1200 enhanced image quality)
- Powerful 360 MHz processor
- 75,000 pages/month duty cycle
- 256 MB memory (expandable to 512 MB) plus 80 GB Hard Drive



Print / Copy / Scan / Fax / Email

8.5 x 11 in.

35 ppm

**WxDxH:**  
18.6 x 18.8 x 21.4 in.  
472 x 478 x 543 mm



# Section 1: Introducing the Xerox® Phaser® 3635MFP Multifunction Printer

## Phaser 3635MFP Configuration



### Phaser 3635MFP/S

The Phaser 3635MFP delivers standard network printing, copying and network scanning.

#### Print Capabilities

- Print speed of up to 35 ppm
- Automatic two-sided output
- First-page-out Time (FPOT) as fast as 8.5 seconds
- 600 x 600 dpi print resolution (up to 1200 x 1200 enhanced image quality)
- **Page Description Language:** PostScript® 3™ compatibility, PCL® 6 and 5e emulations
- **Print Features:** Fit-to-page, N-up, secure print, sample set, delayed print, booklet creation, collation, print to and from hard drive, toner saver mode, watermarks

#### Copy Capabilities

- Copy speed of up to 35 ppm
- Automatic two-sided output
- Standard Duplex Auto Document Feeder (DADF)
- First-copy-out Time (FCOT) as fast as 8.5 seconds
- 600 x 600 dpi copy resolution
- **Copy Features:** Book copy, booklet creation, collation (via DADF only), covers, darkness control, edge erase, ID card copy, image shift, multi-up, transparency separators, reduce/enlarge, copy to hard drive

#### Scan Capabilities

- Up to 35 ppm scan speed (via DADF)
- Automatic two-sided scanning (via DADF)
- Up to 600 x 600 dpi scan resolution
- **File Formats:** PDF, JPEG, TIFF, Multipage TIFF
- **Scan Destinations:** Scan to email, network, USB
- **Scan Software:** Xerox® Scan to PC Desktop Personal Edition

#### Controller

- 360 MHz processor
- **Memory:** 256 MB (standard), 512 MB (maximum)
- 80 GB hard drive
- **Connectivity:** 10/100Base-TX Ethernet, USB 2.0



### Phaser 3635MFP/X

Builds on the Phaser 3635MFP/S with the addition of:

#### Fax Capabilities

- **Transmission Speed:** As fast as 3 sec. per page transmission (via 33.6 Kbps modem)
- Up to 406 x 392 dpi fax resolution
- Up to 100 group dial locations
- Up to 200 individual speed dial locations
- **Fax Features:** color fax send, address book, priority send, junk fax list, junk fax prevention, background suppression, mailboxes, polling, forward to fax / email, secure fax, fax broadcast

#### Paper Handling

- 20-sheet, single-position, offline convenience stapler

### Optional

Configure the Phaser 3635MFP to meet your specific needs with a range of optional accessories:

#### Controller:

- Wireless Ethernet networking
- 256 MB memory upgrade
- Foreign Device Interface

#### Paper Input

- 500-sheet feeder

#### Fax Capabilities

- Network Fax Server Enablement

#### Management

- Network Accounting Enablement

#### Miscellaneous

- Cabinet Stand

# Section 2: Evaluating Black-and-white MFPs

## Overview

**Based on continuous study of our customers' business-productivity requirements,** it is recommended that the following criteria be used when evaluating which black-and-white MFP to purchase for your office.

### **Deployment, Management and Ease-of-use**

How does the MFP simplify deployment, management and daily use?

#### **Productivity**

Can the MFP keep up with the demands of your daily and monthly workloads?

#### **Versatility**

Does the MFP deliver the range of capabilities your office requires?

#### **Reliability**

Is the MFP durable enough to meet users' demands, and is it backed by quality service?

#### **Security**

Does the MFP help ensure that confidential information stays private?

This section examines each of the above evaluation criteria in greater detail, covering the specific features and performance attributes you should look for in a black-and-white workgroup MFP. When the same criteria are used to evaluate every device under consideration, you'll see how the Phaser 3635MFP multifunction printer excels against other manufacturers' products.



# Section 2: Evaluating Black-and-white MFPs

## Deployment, Management, and Ease-of-use

**Installing a multifunction device can be challenging, whether an IT staff handles deployment in a larger organization or if the MFP is being installed in a smaller office with no IT resources.** The process isn't limited to physically placing the unit in its new environment, but also may include integration with an existing network infrastructure. Also, consider the steps required to deploy printing and scanning services to multiple users; can the process be automated? Evaluate the management tools delivered with the MFP, and whether they will ease the task of managing the device. Lastly, think about ease of use. Is the device simple to operate, and will users quickly feel comfortable with it? Are the user interfaces, both the front panel and print driver, well designed and easy to navigate?

### How the Phaser 3635MFP exceeds the deployment requirement:

#### Installation

Easy installation starts with unpacking the MFP and ends when it's powered up, connected to your network, and ready to use. The Phaser 3635MFP multifunction printer is easily removed from its packaging and, at just over 48 pounds, can be safely placed in the office by two people. The included quick install guide walks you through the installation of optional accessories, connecting the MFP to the network and a power source, and initial start-up. Settings such as language selection and feature setup are completed either at the large, color touch-screen on the Phaser 3635MFP multifunction printer's front panel, or via the use of remote management software such as Xerox® CentreWare® IS or CentreWare Web.

#### Easy Driver Deployment

Xerox includes an installation CD that features an easy, wizard-based process to install print and scan drivers. If preferred, print drivers can be easily downloaded from the Xerox website. Also, drivers can automatically be installed in offices that utilize remote desktop-management software.

### How the Phaser 3635MFP exceeds the management requirement:

#### Xerox Management Software

Xerox® CentreWare Web is a powerful device management solution for IT departments. This free software eases the chore of installing, configuring, managing, monitoring and pulling reports from SNMP-compliant networked printers and multifunction printers throughout your enterprise – regardless of vendor. Xerox also addresses enterprise asset management through compatibility with network management tools for Sun, Novell, Microsoft and other environments.

The Phaser 3635MFP multifunction printer also includes CentreWare IS, an embedded web server that allows users and IT personnel to perform detailed status checks on the system and consumables, administer system settings, and manage access and accounting controls via any standard web browser.

Xerox® Standard Accounting software adds helpful remote-management capabilities, such as additional reporting options, setting quotas and output limits, and more.



CentreWare IS helps administrators quickly install, configure and troubleshoot the 3635MFP multifunction printer.

## Network Management

The Xerox® Phaser® 3635MFP multifunction printer integrates into virtually any network environment. Network configuration is simple via the front panel, Xerox® CentreWare® IS or CentreWare Web. The Phaser 3635MFP multifunction printer supports many common network protocols (including TCP/IP, SNMPv3, SMB, Novel IPX, AppleTalk, and IPP) and integrates with network management applications via CentreWare plug-ins (for Unicenter®, Tivoli®, Netware®, Microsoft® Management Console, and HP® OpenView®).

## Xerox Office Services

Lastly, Xerox offers a host of productivity-enhancement services for managing an office's document output and asset infrastructure. Such services deliver measurable business results by leveraging a powerful set of office technologies, business processes, methodologies and software tools to reduce costs and improve productivity. These offerings are summarized in Section 3 of this guide.

## How the Phaser 3635MFP exceeds the ease-of-use requirement:

### Color Front Panel Interface

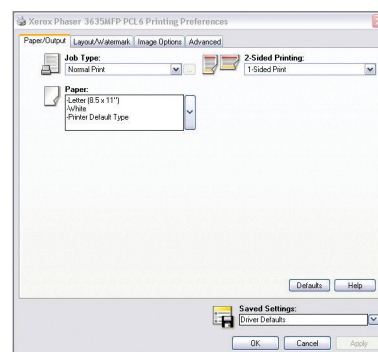
The Phaser 3635MFP multifunction printer's cutting-edge, 7-inch, full-color touch screen redefines walk-up ease-of-use. Whether printing, copying, scanning, faxing or emailing, the bright, colorful display guides users from start to finish with large, clear, easily recognizable icons. Once a feature is selected, the tab-based interface gives users fast access to the most commonly-accessed features with intuitive navigation to advanced settings. Buttons to the left of the color screen give single-click access to the feature-selection screen, the default feature screen (usually copy), job status and machine status. Buttons to the right of the screen include an alpha-numeric keypad and the start button, and familiar buttons for powering on the device, clearing job programming, interrupting a current job, and stopping a job.

### Bi-directional Print Drivers

Print drivers for the Phaser 3635MFP multifunction printer provide easy, intuitive job programming as well as updated system-status information. Like the front-panel user interface, the print drivers are organized by tabs for intuitive access to features. The most commonly used features are located on the default tab, with advanced features easily accessible when programming more complex jobs. The print drivers also provide bi-directional information such as system status, consumable status, job status, currently loaded paper sizes, installed options and more.



Whether printing, copying, scanning, faxing or emailing, the cutting-edge, 7-inch, full-color touch screen guides users from start to finish with large, easily recognizable icons



Bi-directional print drivers allow for easy job programming right at users' desktops.



# Section 2: Evaluating Black-and-white MFPs

## Evaluate Productivity

**In addition to print engine speed, consider other attributes that affect overall throughput.** Does the MFP include productivity-enhancing capabilities, such as a Duplex Automatic Document Feeder (DADF) to ease the processing of two-sided originals? Will your documents be printed with the image quality users need? Does the MFP feature the connectivity choices your office requires, and does it include a hard drive that can store frequently needed documents for fast reprinting at the device? Can jobs be programmed while the MFP is busy outputting an earlier job? Is device-status information available at both the device and a user's desktop?

### How the Xerox® Phaser® 3635MFP multifunction printer exceeds the productivity requirement:

#### Performance

The Phaser 3635MFP multifunction printer quickly outputs even the most graphic-heavy documents, whether single or double-sided, with print speeds as fast as 35 pages per minute. Long jobs are quickly completed, and with a first-page-out time (FPOT) as fast as 8.5 seconds you won't wait long for short jobs, either. Multipage and double-sided copy, scan and fax jobs are processed in a single pass through the 60-sheet DADF, minimizing time spent feeding originals into the MFP.

#### Image Quality

Whether printing presentations, reports or simple emails – the Phaser 3635MFP multifunction printer delivers impressive results with 600 x 600 dpi print resolution (up to 1200 x 1200 enhanced image quality). Also, Xerox includes support for multiple page description languages including PostScript® 3™ compatibility and PCL® 6 and 5e emulations. For scanning, the Phaser 3635MFP delivers outstanding image quality, with 600 x 600 dpi resolution.

#### Network Performance

The Phaser 3635MFP multifunction printer's performance isn't limited to raw document feeds and speeds. With a controller that includes a 360 MHz processor, 256 MB of memory (expandable to 512 MB), and standard support for USB 2.0 and 10/100Base-T connectivity, the Phaser 3635MFP multifunction printer quickly processes jobs while minimizing network traffic. Plus, the 80 GB hard drive allows frequently printed documents, such as business forms, to be stored on the MFP's hard drive and reprinted directly from the front panel.

#### Concurrency

The Phaser 3635MFP multifunction printer's network controller also helps prevent bottlenecks at the front panel. By keeping the front panel available for programming, users can stay productive and avoid idle time waiting for the MFP. Concurrent operation means no more waiting until a long print job is complete to program a fax, scan or copy job. Scan and fax jobs can be programmed and executed without waiting for the print engine to become available, while newly programmed copy jobs will join the job queue and be executed when earlier jobs are completed.

#### Monitoring System Status

Whether at your desk or at the Phaser 3635MFP multifunction printer's front panel, current information is available on every job the MFP processes as well as in-depth device status. See the list of jobs currently in the print queue, the number of daily outgoing fax transmissions, paper-level status, and total page output counts without leaving your desk via Xerox® CentreWare® IS or the print driver, or via the device's front panel.

# Section 2: Evaluating Black-and-white MFPs

## Evaluate Versatility

**How many functions can the device perform?** Does the integration of multiple functions into a single device result in the MFP sacrificing important capabilities, such as print or copy performance? Does MFP deliver a level of all-around performance that will enable the replacement of multiple devices on your network? Does the MFP include support for the types of media users utilize on a regular basis?

### How the Xerox® Phaser® 3635MFP multifunction printer exceeds the versatility requirement:

#### Print Features

At its core, the Phaser 3635MFP multifunction printer is a high-performance network printer capable of handling the black-and-white printing workload of small, busy offices and workgroups. Print speeds of up to 35 ppm, FPOT as fast as 8.5 seconds and automatic two-sided printing make quick work of long jobs while conserving paper. 600 x 600 dpi printing (up to 1200 x 1200 enhanced image quality) plus PostScript® 3™ compatibility and PCL® 6 and 5e emulations also ensure impressive results.

The Phaser 3635MFP multifunction printer's strong performance is backed by a set of printing features that include:

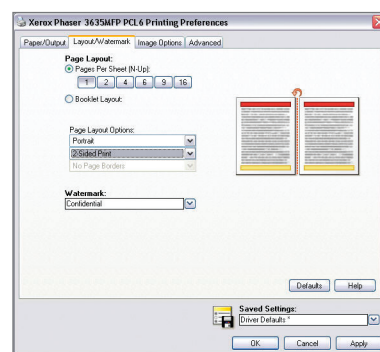
- **N-up:** saves paper by printing multiple pages onto each sheet
- **Secure print:** holds a private print job until released at the device by the job owner
- **Sample set:** allows users to proof a sample document before printing entire job
- **Booklet creation:** formats and arranges pages for folding as booklet
- **Print to and from hard drive:** store frequently accessed documents on the MFP for fast reprinting at the device
- **Toner Saver Mode:** reduces toner consumption
- **Watermarks:** adds custom watermarks, such as "DRAFT" or "CONFIDENTIAL," to printed documents

#### Copy Features

As with printing, the Phaser 3635MFP multifunction printer is a high-performance black-and-white copier for busy offices and workgroups. With copy speeds of up to 35 ppm, FCOT as fast as 8.5 seconds and automatic double-sided copying of double-sided originals (via the DADF), the Phaser 3635MFP multifunction printer delivers high-end productivity in a desktop device.

Beyond high-performance copying, the Phaser 3635MFP multifunction printer delivers a strong set of copy features as well:

- **Booklet creation:** formats and arranges pages for folding as booklet
- **Collation:** automatic (via DADF only)
- **Copy Print Store Reprint (CPSR):** store copy jobs on the device for convenient reprinting later
- **Covers:** choose special media for cover pages
- **ID card copy:** copies both sides of an ID card onto a single sheet of paper
- **Multi-up:** saves paper by printing multiple pages onto each sheet
- **Reduce/Enlarge:** 25 to 400 % from both the platen and the DADF with 10 preset zooms
- **Transparency separators:** inserts pages between copied transparencies



Choose advanced printing options, like N-Up, Booklet creation, two-sided printing and watermarks, directly from the Phaser 3635MFP's print driver.

## Scan Features

The Phaser 3635MFP multifunction printer includes powerful scanning that helps streamline your company's work processes, serving as a digital on-ramp for distributing, editing and archiving hard-copy documents. Built-in file formats include PDF, JPEG, TIFF and multi-page TIFF, and the 60-sheet DADF automates the scanning of lengthy documents and double-sided originals, scanning pages as quickly as 35 pages per minute.

The Phaser 3635MFP multifunction printer offers a number of scan destinations to support your work processes, including:

- **Scan to Email:** sends scans to email recipients, with authentication and LDAP for network security and integration
- **Network Scanning:** templates enable distribution of scanned images to multiple predefined locations
- **Scan to USB Device:** sends scanned images to any USB memory drive via front-panel port

In addition, the Phaser 3635MFP multifunction printer is packaged with Xerox® Scan to PC Desktop® Personal Edition scan software, which includes the following applications:

- **Nuance® PaperPort® SE:** simplifies the scanning, organizing and sharing of documents
- **OmniPage® SE:** converts paper documents into editable Word and Excel files
- **Image Retriever Professional 6.0:** automates retrieval of scanned images from Xerox devices

## Fax Features

The Phaser 3635MFP/X configuration adds fax functionality with a 33.6 Kbps fax modem, up to 600 x 600 dpi (superfine) resolution, plus a set of features you'd expect to find on dedicated fax systems, including:

- **Fax broadcast:** sends faxes to multiple destinations at once
- **Color Fax send:** transmits full-color faxes
- **Compression:** MH, MR, MMR, JBIG, JPEG

- **Address Book:** allows fast access to stored fax numbers
- **Group Dial:** up to 100 locations
- **Individual Speed Dial:** up to 200 locations
- **Polling:** stores fax documents in the MFP's memory for retrieval by another remote fax machine
- **PC Fax (send):** transmits electronic documents directly from a computer via print driver
- **Secure fax receive:** holds incoming faxes until PIN is entered by the intended recipient at the device

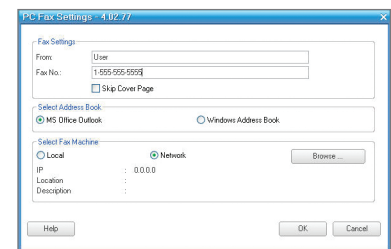
## Media Support

The Phaser 3635MFP multifunction printer offers the paper capacity and media support necessary to meet the daily needs of small offices and workgroups that produce a wide variety of documents.

- **Paper capacity:**
  - 550 sheets standard, 1,050 sheets maximum
  - **DADF:** 60 sheets
  - **Bypass Tray:** 50 sheets
  - **Tray 1:** 500 sheets
  - **Tray 2 (optional):** 500 sheets
  - **Output Tray:** 250 sheets
- **Supported media sizes:**
  - **DADF:** 8.5 x 11 in. to 8.5 x 14 in. (210 x 297 mm to 216 x 356 mm)
  - **Bypass Tray:** 3.9 x 5.8 in. to 8.5 x 14 in. (98 x 148 mm to 216 x 356 mm)
  - **Trays 1 & 2:** 5.85 x 8.27 in. to 8.5 x 14 in. (148 x 210 mm to 216 x 356 mm); standard selectable sizes up to 8.5 x 14 / A4
- **Supported media weights:**
  - **DADF:** 12 to 28 lb. / 50 to 120 gsm
  - **Bypass Tray:** 16 to 43 lb. / 60 to 163 gsm
  - **Trays 1 & 2:** 16 to 28 lb. / 60 to 105 gsm



Images can be scanned directly from the Phaser 3635MFP to any USB memory drive via the USB port, conveniently located on the front of the device.



Fax documents from any networked computer with the Phaser 3635MFP's PC Fax feature.

# Section 2: Evaluating Black-and-white MFPs

## Evaluate Reliability

**Office productivity is tied directly to the reliability of the devices upon which users depend.** Consider whether the printer helps proactively avoid disruptions in operations. If a disruption occurs, will the printer help you diagnose and address the issue?

### How the Xerox® Phaser® 3635MFP exceeds the reliability requirement:

#### Day-to-day Reliability

With a rated duty cycle of up to 75,000 pages per month<sup>1</sup>, the Phaser 3635MFP multifunction printer easily handles the normal daily workloads, as well as the heaviest peak-period workloads, of workgroups as large as 10 employees. The Phaser 3635MFP also helps avoid paper-reloading interruptions, with a standard 550-sheet paper capacity and the option to increase total capacity to 1,050 sheets. Plus, proactive reporting of the current toner level prevents unnecessary downtime, ensuring that you'll have a replacement cartridge on hand when it's needed. Choose high-capacity print cartridges for extended printing.

#### Troubleshooting

The Phaser 3635MFP multifunction printer helps users avoid unnecessary downtime and backups at the device. If the printer requires intervention during a print job, a notification will alert the user at his or her desk with specific instructions for how to get the MFP back up and running. Clicking on the notification will provide graphical instructions as to what action the device requires, and similar graphical instructions will be available at the MFP's front panel as well.

#### Service / Support

Building on the reliability engineered into the Phaser 3635MFP multifunction printer, Xerox has implemented a sophisticated service-delivery network capable of maintaining your equipment, addressing issues, and training IT staff and users on how to get the most out of your Xerox purchase.

<sup>1</sup> Print Volume uniformly distributed over 30 days.



Phaser 3635MFP/X multifunction printer shown with optional 500-sheet feeder.

# Section 2: Evaluating Black-and-white MFPs

## Evaluate Security

**In today's business environment, security is a critical competency.** The technology you deploy into your organization must have a complete set of capabilities to help safeguard your confidential information. Does the device have the security features to meet these demands? Can device access be password protected? Does the system remove latent images from its hard drive? Does the system have features in place to protect confidential documents?

### How the Xerox® Phaser® 3635MFP multifunction printer exceeds the security requirement:

#### Integrated Security

The Phaser 3635MFP multifunction printer delivers security features that safeguard confidential information at all points of document vulnerability:

#### Document

- Secure fax requires entry of a PIN access code before the received fax is printed.
- Secure print holds print jobs until released at the device by the job owner.
- Watermark places watermarks on prints and copies that prevent or obscure attempted copies.

#### Device

- Audit log tracks printing, scanning and network fax activities by user, time and date.
- Network Authentication restricts access to device features and management settings by validating user names and passwords.

#### Hard Drive

- Encrypted disk drive applies 128-bit encryption to data stored on the device's hard drive.
- Image overwrite electronically "shreds" data stored on the device's hard drive automatically after every job or as scheduled by an administrator.

#### Network

- Fax isolation separates the network connection and the fax telephone line to avoid incoming fax-based network attacks.
- IEEE 802.1X protocol ensures devices connected to the network are properly authenticated.
- Secure data protocols secures network communications with industry standards including HTTPS, SSL and SNMPv3.0.
- IP filtering restricts communications with specific network clients.



**The Phaser 3635MFP multifunction printer ensures security at all points of vulnerability.**

# Section 3: Configurations, Specifications, Supplies, Support and Additional Information Sources

## Configuration Summary



	Phaser 3635MFP/S	Phaser 3635MFP/X
<b>Speed</b>	Up to 35 ppm letter / 33 ppm A4	
<b>Duty Cycle</b>	Up to 75,000 pages / month	
<b>Paper Handling</b> Paper Input	Standard	<b>Duplex Automatic Document Feeder:</b> 60 sheets; Size: 5.5 x 8.5 in. to 8.5 x 14 in. / 148 x 210 mm to 216 x 356 mm; Weight: 12 to 28 lb / 50 to 120 gsm <b>Bypass Tray:</b> 50 sheets; Size: 3.9 x 5.8 in. to 8.5 x 14 in. / 98 x 148 mm to 216 x 356 mm; Weight: 16 to 43 lb / 60 to 163 gsm <b>Tray 1:</b> 500 sheets; Size: 5.85 x 8.27 in. to 8.5 x 14 in. / 148 x 210 mm to 216 x 356 mm; Weight: 16 to 28 lb / 60 to 105 gsm; Standard selectable sizes up to 8.5 x 14 / A4
	Optional	<b>Tray 2:</b> 500 sheets
<b>Output</b>	250 sheets, automatic two-sided	
<b>Finishing</b>	NA	<b>Offline Convenience Stapler:</b> 20-sheet, single position
<b>Print</b> First-page-out Time	As fast as 8.5 seconds	
Print Resolution	600 x 600 dpi (up to 1200 x 1200 enhanced image quality)	
Memory (standard / max)	256 MB / 512 MB plus 80 GB Hard Drive	
Processor	360 MHz	
Language Support	PostScript® 3™ compatibility, PCL® 6 and 5e emulations	
Connectivity	10/100 Base-T Ethernet, USB 2.0	
Print Features	Custom page size, Automatic two-sided, Watermark, Secure print, Sample set, Delayed print, Cover selection, Paper selection by attribute, Toner saver, N-Up, Mirror image, Negative image, Image rotation, Saved settings, Booklet creation, Fit to new paper size, Collation, Print to Hard Drive, Print from Hard Drive, Print from USB memory drive	
<b>Copy</b> First-page-out Time	As fast as 8.5 seconds	
Copy Resolution	600 x 600 dpi	
Copy Features	Automatic two-sided, Collation, Reduce/Enlarge 25 to 400 % from platen and ADF, Book copying, Mixed-size originals, Edge erase, Image shift, Booklet creation, Covers, Auto paper select, Lighten/darken, Transparency Separators, Multi-Up, ID Card Copy, Copy to Hard Drive, Background suppression	
<b>Fax</b>	NA	Embedded Fax (33.6 Kbps with MH, MR, MMR, JPEG and JBIG compression)*, LAN Fax
Fax Features	NA	Up to 600 x 600 dpi (superfine) resolution, Color Fax send, Address Book, Priority send, Fax reports, Junk fax list, Junk fax prevention, Background suppression, Mailboxes, Polling, Forward to Fax / Email, Secure Fax, Fax broadcast
<b>Scan</b> Scan Destinations	Scan to Email, Network Scanning, Scan to USB memory drive	
Scan Features	Up to 600 x 600 dpi; File formats: PDF, JPEG, TIFF, Multi-page TIFF; Xerox Scan to PC Desktop® Personal Edition (Includes 1 seat of OmniPage®, PaperPort®, and Image Retriever for use with network scanning), Color Scanning, FTP, HTTP, HTTPS, SMB	
<b>Accounting</b>	Xerox Standard Accounting (tracks copy, print, scan, fax), Network Accounting enablement supports optional Xerox Alliance Partner Solutions	
<b>Security</b>	Image Overwrite Security, SSL, Authentication, 802.1X, SNMPv3, IP Filtering, Audit Log, HTTPS, Secure Print, Secure Fax	
<b>Options</b>	Foreign Device Interface, 256 MB Memory Upgrade, Cabinet Stand, Network Accounting Enablement, Network Fax Server Enablement	
<b>Warranty</b>	One Year On-Site Warranty, Xerox® Total Satisfaction Guarantee	

\* Analog phone line required



# Section 3: Configurations, Specifications, Supplies, Support and Additional Information Sources

## Specifications

Specifications			
<b>Device Management</b>	Xerox® CentreWare® Internet Services, CentreWare Web, CentreWare for HP OpenView, CentreWare for IBM Tivoli NetView, CentreWare for Unicenter, CentreWare® Management Pack for Microsoft System Center Operations Manager (SCOM), Xerox Novell Distributed Print Services Solution (NDPS)		
<b>Print Driver Support</b>	Windows 2003 Server/XP/XP Professional/Vista, Macintosh OS X v10.3, Solaris 9/10, Red Hat ES, Linux, Fedora Core 4, SUSE, AIX 5, HP-UX 11.0/11i		
<b>Operating Environment</b>	<b>Temperature:</b> <ul style="list-style-type: none"> <li>Operating: 50° to 90° F (10° to 32° C)</li> <li>Optimum: 61° to 86° F (16° to 30° C)</li> </ul> <b>Relative Humidity:</b> <ul style="list-style-type: none"> <li>Operating: 20 % to 80 %</li> <li>Optimum: 30 % to 70 %</li> </ul> <b>FPOT (from power save):</b> 25 seconds		
<b>Electrical</b>	<b>Power:</b> 110–127 VAC and 220–240 VAC, 50/60 Hz <b>Power Consumption: Average:</b> 600 W, Power Save: 15 W		
<b>Dimensions</b> Width x Depth x Height, Weight	18.6 x 18.8 x 21.4 in. (472 x 478 x 543 mm), 48.6 lb. (22.1 kg)		
<b>Agency Approvals</b>	Listed to UL 60950-1/CSA 22.2 No. 60950-1-03, Class 1 Laser Product, FCC Part 15, Class A, CE marked in accordance with Low Voltage Directive, 2006/95/EC and EMC Directive 2004/108/EC, CB Certified against IEC 60950, Section 508 ADA, Cerner Tested and Certified		
<b>Supplies and Routine Maintenance Items</b>	Description	Details	Part Number
	Standard-Capacity Print Cartridge	Average 5,000 standard pages <sup>1</sup>	108R00793
	High-Capacity Print Cartridge	Average 10,000 standard pages <sup>1</sup>	108R00795
	Staple pack (for 3635MFP/X)	3,000 staples per pack	108R00823
<b>Accessories</b>	256 MB memory upgrade		098N02189
	Paper Tray	500-sheet capacity	098N02190
	Cabinet Stand		097N01674
	Foreign Device Interface		097N01676
	Network Accounting Enablement		098S04928
	Network Fax Server Enablement		098S04931
	Wireless Network Adapter		097S03740
<b>Extended Service Agreements</b>	Annual On-Site Service Agreement		E3635MSA
	2 Years Additional (total of 3 years) <sup>2</sup>		E3635MS3
	3 Years Additional (total of 4 years) <sup>2</sup>		E3635MS4

<sup>1</sup> Declared Yield in accordance with ISO/IEC 19752. Yield will vary based on image, area coverage and print mode.

<sup>2</sup> Available for purchase during first 90 days of ownership.

# Section 3: Configurations, Specifications, Supplies, Support and Additional Information Sources

## Support and Additional Information Sources

### Unrivaled Service and Support

Behind every Xerox product is a large network of customer support that's unrivaled in the industry and available when you need it. Xerox service professionals use leading-edge technologies to keep you up and running. They're even linked to the engineers who designed your product, so you can be confident when you choose Xerox. And Genuine XEROX® supplies are always readily available.

### Total Satisfaction Guaranteed

The exclusive Xerox® Total Satisfaction Guarantee, recognized as unique in the industry, covers every Phaser device that has been continuously maintained by Xerox or its authorized representatives under a Xerox express warranty or Xerox maintenance agreement. You decide when you're satisfied.

### Xerox Office Services Support

#### Asset Management Services

- Asset Optimization and Tracking – Process and tools to optimize an enterprise's office output infrastructure and reduce
- Overall costs
- Break-Fix Management – Single point of ownership and management for break-fix service for all brands of office output devices
- Supplies Management – Process and tools to procure, monitor and replenish all document-related supplies proactively

#### Imaging and Output Management Services

- Output Management – Single point of management of office output from all output devices, regardless of manufacturer
- Image Capture and Workflow – Cost-efficient solutions for capturing, managing, retrieving and distributing information into digital repositories

### Support Services

- Technology Procurement and Deployment – A creative and flexible end-to-end print/computer product acquisition solution that uses a single-point-of-contact model while lowering the total cost of acquisition
- Help Desk Services – A broad range of enterprise services managed through a centralized single point of contact and delivered through an on-site or off-site model
- End User Services – Microsoft software implementation, IT project consulting, and customer education

### Access Managed Services

- Student and Library Patron Access – Custom designed and implemented customer-managed solutions for student and library patron print access management

### Additional Information Sources

#### What's in the Box:

- Printer
- Print cartridge (5,000 print capacity)
- World kit (includes Printer Installer & utilities CD, Software and document CD, Warranty booklet)
- Power Cord

#### Phaser 3635MFP Front Panel:

- The front panel offers tools and information pages to help with machine setup, feature selections, operational problems, media-feed and supply issues.

### On the Web:

Visit [www.xerox.com/office](http://www.xerox.com/office) for:

- Product, supplies and support information
- Downloading drivers
- Finding your local Xerox sales representative
- Online documentation

Visit [www.xerox.com/office/support](http://www.xerox.com/office/support) for:

Support and service information, including the same troubleshooting Knowledge Base used by Xerox Customer Support staff to provide the latest technical information on:

- Application issues
- Errors
- Print-quality issues
- Troubleshooting

### Questions? Comments? Problems?

If for any reason you need to contact your Xerox sales representative, please call 1-877-362-6567, or visit us on the web at [www.xerox.com/office](http://www.xerox.com/office).

