

**Xerox Phaser®  
3250**

Letter size  
Black-and-white  
Laser Printer



# Xerox Phaser® 3250 Laser Printer Evaluator Guide

# About this Guide

This guide introduces you to the Xerox Phaser® 3250 laser printer, provides an overview of its capabilities and features, and will help you in your printer evaluation process.

## Contents

### Section 1: Introducing the Xerox Phaser 3250 Laser Printer

- 3**    **Product Overview**
- 4**    **Phaser 3250 Configurations and Accessories**

### Section 2: Evaluating Black-and-White Laser Printers

- 5**    **Overview**
- 6**    **Evaluate Ease of Installation, Management and Use**
- 8**    **Evaluate Productivity**
- 9**    **Evaluate Versatility**

### Section 3: Configurations, Specifications, Supplies, Support and Additional Information Sources

- 10**   **Configuration Summary**
- 11**   **Specifications**
- 11**   **Supplies, Accessories and Extended Service Agreements**
- 12**   **Support and Additional Information Sources**

# Section 1: Introducing the Xerox Phaser 3250 Laser Printer

## Product Overview

Whether supporting one user or a small workgroup, the Phaser 3250 laser printer offers the ultimate combination of fast printing, office-friendly convenience and unbeatable overall value in a compact, space-saving design.

### More performance, for less

Get up to speed with the Phaser 3250, the laser printer that delivers peak performance and impressive print quality.

- Get work done fast, with a print speed of up to 30 ppm and a first-page-out time less than 9 seconds.
- Automatic two-sided printing saves valuable time and paper.
- A network configuration — with both Windows, Mac and Linux compatibility — is truly business-ready.
- The 400 MHz processor ensures all jobs print quickly and accurately, even when they're loaded with graphics.



### Convenience, flexibility

The convenience and reliability of the Phaser 3250 allow it to meet the needs of single users or small workgroups.

- A surprisingly small footprint makes it easy to position within quick reach.
- Standard 32 MB memory can expand to 160 MB for enhanced performance when your workload demands it.
- Add a second 250-sheet paper tray for a total capacity of 500 sheets.
- Print on custom sizes and a wide range of media, from transparencies and cardstock, to envelopes and postcards.
- Power Save and Toner Save modes help you spend less on electricity and consumables.

### Always impressive results

The Phaser 3250 always delivers impressive results, with outstanding image quality in a reliable package.

- 600 x 600 dpi print resolution (up to 1200 x 1200 enhanced image quality) adds visual impact to important jobs.
- PostScript® 3™ compatibility (DN configuration only) and PCL® 6 emulation ensure your print jobs are always accurate.
- A 30,000-page monthly duty cycle handles big print volumes with ease.
- Outstanding Xerox quality, reliability and performance are backed by Xerox Service and Support, a standard one-year warranty, and the unmatched Xerox Total Satisfaction Guarantee.

# Xerox Phaser 3250 Laser Printer Configurations and Accessories



## Phaser 3250D

The Phaser 3250D laser printer includes the following standard features:

### Performance

- Print speeds of up to 30 ppm (letter), 28 ppm (A4)
- First-Page-Out-Time (FPOT) as fast as 8.5 seconds
- Resolution up to 600 x 600 dpi (up to 1200 x 1200 enhanced image quality)
- Automatic two-sided output
- Page Description Languages: PCL® 6 and 5e emulations, IBM ProPrinter emulation, EPSON emulation, GDI
- 400 MHz processor
- 32 MB (standard), 160 GB (maximum) memory
- USB 2.0 connectivity

### Paper Handling

- **Multipurpose Tray:** 1 sheet; Custom sizes: 3 x 5 in. to 8.5 x 14 in. (76 x 127 mm to 216 x 356 mm); Weights: 16 – 43 lb. bond / 60 – 163 gsm
- **Tray 1:** 250 sheets; Sizes: Letter, Legal, Folio, Oficio, A4, JIS B5, ISO B5, Executive, A5, A6; Weights: 16 – 28 lb. bond / 60 – 105 gsm
- **Output Tray:** 150 sheets

### Print Features

- Watermarks, Poster printing, N-up, Fit to page, Scaling, Overlays, Booklets, Reduce/enlarge, Toner saver, Custom-size pages

### Reliability

- Duty Cycle of up to 30,000 pages per month
- Recommended Average Monthly Print Volume of up to 4,000 pages
- **Warranty:** One-year Quick Exchange, Xerox Total Satisfaction Guarantee



## Phaser 3250DN

Builds on the Phaser 3250D with the addition of:

### Performance:

- Page Description Language: PostScript® 3™ compatibility
- 10/100BaseTX Ethernet connectivity

## Optional

The following options are available to increase the Phaser 3250 laser printer's productivity:

- 250-sheet paper tray (Tray 2): Sizes: Letter, Legal, Folio, Oficio, A4, JIS B5, ISO B5, Executive, A5, A6; Weights: 16 – 28 lb. bond / 60 – 105 gsm
- 128 MB memory upgrade

• **Print**

**Letter / Legal**

**30**

**ppm**

**WxDxH:**

14.3 x 14.5 x 9.4 in.

364 x 369.4 x 239.2 mm

## Section 2: Evaluating Black-and-White Laser Printers

### Overview

Based on continuous study of our customers' productivity requirements, Xerox recommends that the following criteria be used when evaluating which black-and-white laser printer to purchase for your office.

#### Ease of Installation, Management and Use

Does the printer offer an installation process simple enough for nontechnical employees?

Does it include helpful tools that simplify day-to-day management?

#### Productivity

Does the printer deliver the level of performance required to help users become more productive?

#### Versatility

Can the printer adapt to meet the evolving needs of a busy single user or a small workgroup?

This section examines each of the above evaluation criteria in greater detail, covering the specific features and performance attributes you should look for in a black-and-white printer. When the same criteria are used to evaluate every device under consideration, you'll see how the Phaser 3250 laser printer excels against other manufacturers' products.

# Evaluate Ease of Installation, Management and Use

Deploying a printer can be challenging, whether in a large organization or small office. The process may include integrating the printer into your existing network infrastructure and deploying print drivers to users' computers. Evaluate whether the driver deployment process can be automated. Also, evaluate the tools delivered with the printer, and whether they will ease the task of managing the device. Lastly, think about ease of use. Will users quickly feel comfortable operating the printer?

## How the Phaser 3250 laser printer exceeds the ease-of-installation requirement

### Initial set up

Easy set up starts with unpacking the device and ends when it's powered up and ready for use. The Phaser 3250 laser printer is easily removed from its packaging and, at just over 26 lbs., can easily be moved into place by one person. The included quick install guide helps install the print cartridge and optional accessories, load paper, connect the printer to your computer via USB 2.0 (3250D configuration) or to your network via Ethernet (3250DN configuration), and power-up the device. If connecting to your network, the printer will automatically be assigned an IP address and join the network via DHCP, and device settings such as language selection and feature setup are completed via remote management software like Xerox CentreWare® Internet Services (CentreWare IS).

### Driver deployment

Installing print drivers onto users' computers is a simple process. Simply insert the Phaser 3250 installation CD and follow the prompts. Or, networked users can enter the printer's IP address into any standard web browser and download and install print drivers using the Phaser 3250 CentreWare IS page.

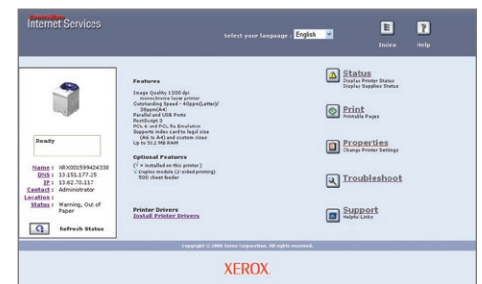
## How the Xerox Phaser 3250 laser printer exceeds the management requirement

### Xerox management software

The Phaser 3250DN configuration includes CentreWare IS, an embedded web server that allows users and IT personnel to perform detailed status checks on the system and consumables, administer system settings, and manage access and accounting controls via any standard web browser.

### Network management

The Phaser 3250DN laser printer supports many common network protocols including TCP/IP, HTTP 1.1, SNMP 1–2 and EtherTalk.



**CentreWare IS helps administrators quickly install, configure, troubleshoot and analyze usage of the Phaser 3250DN laser printer using any standard web browser.**

## Xerox office services

Lastly, Xerox offers a host of productivity-enhancement services for managing an office's document output and asset infrastructure. Such services deliver measurable business results by leveraging a powerful set of office technologies, business processes, methodologies and software tools to reduce costs and improve productivity. These offerings are summarized in Section 3 of this guide.

### How the Phaser 3250 laser printer exceeds the ease-of-use requirement

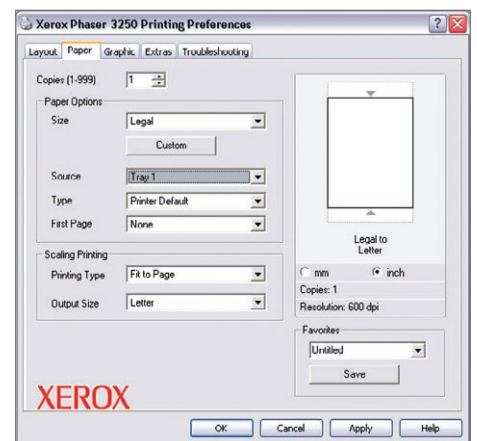
## Bidirectional print drivers

The Phaser 3250D configuration includes print drivers for PCL® 6 and 5e emulations, IBM Pro Printer emulation, Epson emulation and GDI. The Phaser 3250DN configuration adds PostScript® 3™ compatibility.

Organized by tabs, the print drivers make job programming easy and intuitive. The most commonly used features are located on the default tab, with advanced features easily accessible when programming more complex jobs. The print drivers also provide bidirectional information such as system status, consumable status, job status, currently loaded paper sizes, and more.

## Print cartridge replacement

The print cartridge is easily accessed via the front of the Phaser 3250 laser printer — no need to pull the printer out of its location, or turn it around, when periodic replacement of consumables is required.



Bi-directional print drivers allow for easy job programming right at the user's desktop.

# Evaluate Productivity

Productivity is a critical consideration when evaluating which printer is best for your office. Does the printer deliver the level of performance required to support the workload of a busy single user or small workgroup? Does it produce sufficient print quality? Can the printer be expanded to meet a workgroup's evolving needs, and does it offer the media flexibility to support a variety of jobs?

## How the Phaser 3250 exceeds the productivity requirement

### Printing performance

The Phaser 3250 delivers fast print speeds of up to 30 ppm for single-sided, letter-size jobs, and 15 ppm for two-sided jobs.

Plus, even heavy workloads are handled with ease by the Phaser 3250 laser printer. The robust 400 MHz processor can receive a rapid succession of simple and complex print jobs while maintaining all-day productivity.

For average print jobs of three pages or less, the most important specification is first-page-out time, and the Phaser 3250 laser printer performs in as few as 8.5 seconds.

### Print quality

The Phaser 3250 features 600 x 600 dpi print resolution (up to 1200 x 1200 enhanced image quality); producing outstanding print quality without compromising the printer's fast print speed. Whether printing spreadsheets, presentations or customer collaterals, the Phaser 3250 laser printer delivers impressive results.

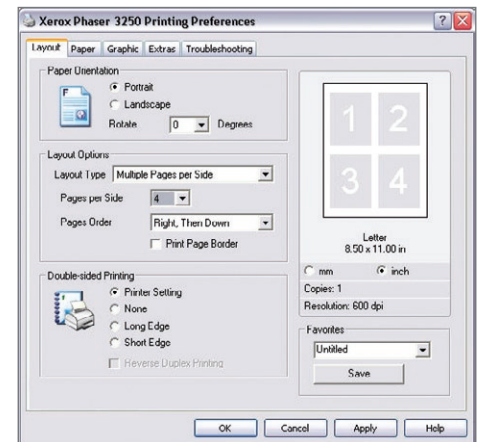
### Day-to-day operation

With a rated duty cycle of up to 30,000 pages\* per month and a recommended average monthly print volume of 4,000 pages, the Phaser 3250 laser printer is adept at handling normal daily workloads as well as the heaviest peak-period workloads. Plus, proactive reporting of current toner levels ensures you'll have replacement cartridges on hand when you need them.

\*Print volume uniformly distributed over 30 days.

### Special features save time and money

- Toner save mode conserves toner usage.
- Automatic two-sided printing reduces paper consumption.
- N-up printing conserves paper by printing multiple pages on a single sheet.
- The printer automatically reduces electricity consumption during periods of non-use.



The Phaser 3250 laser printer provides advanced print features, like N-up, which saves paper by printing multiple pages on a single sheet.



# Evaluate Versatility

Office productivity is tied directly to the versatility of the devices upon which users depend. Consider whether the printer allows for future expansion when workloads increase. Can the printer handle a variety of media sizes and weights?

## How the Xerox Phaser 3250 laser printer exceeds the versatility requirement

### Expandability

The Phaser 3250 laser printer allows the addition of two key options to further enhance office productivity:

- For those users who print a high volume of large, complex files, controller memory can be expanded with a 128 MB upgrade.
- For workgroups of three or more users, consider increasing paper capacity by including an additional 250-sheet feeder.

Plus, you have two options when purchasing print cartridges for the Phaser 3250 laser printer:

- A lower-cost standard-capacity print cartridge for price-sensitive offices, with a 3,500-page capacity\*
- A high-capacity print cartridge, which maximizes the time between consumables purchases, with a 5,000-page capacity\*

\*Average standard pages. Declared yield in accordance with ISO/IEC 19752. Yield will vary based on image, area coverage and print mode.

### Media support

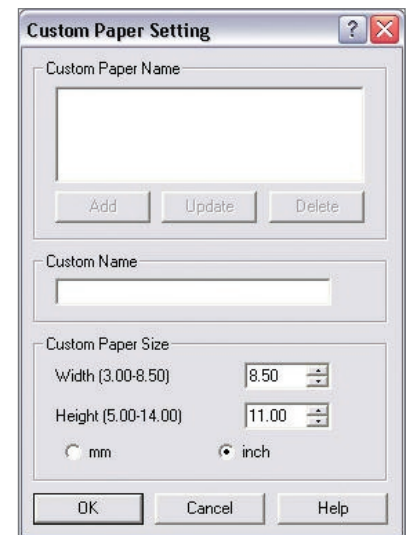
The Phaser 3250 laser printer offers scalable paper capacity to handle the diverse needs of offices of all sizes. Paper capacity starts at 250 sheets, with an optional maximum capacity of 500 sheets.

Paper capacity and media support offered by the Phaser 3250 laser printer include:

- **Standard trays:**
  - The convenient multipurpose tray allows manual, single-sheet feeding of a variety of custom media types and sizes, including envelopes, labels, transparencies, postcards and heavy paper.
  - Tray 1 supports up to 250 sheets of plain paper in Letter, Legal, Folio, Oficio, A4, JIS B5, Executive, A5 and A6 sizes, and weights of 16 to 28 lb. bond / 60 to 105 gsm.
  - Two-sided printing supports media weights of 20 to 24 lb. bond / 75 to 90 gsm.
- **Optional tray:**
  - Tray 2 supports up to 250 sheets of plain paper in Letter, Legal, Folio, Oficio, A4, JIS B5, Executive, A5 and A6 sizes, and weights of 16 to 28 lb. bond / 60 to 105 gsm.



Phaser 3250 laser printer shown with optional 250-sheet Tray 2.



The Phaser 3250 laser printer allows users to print on a variety of custom paper sizes.

## Section 3: Configurations, Specifications, Supplies, Support and Additional Information Sources

### Configuration Summary

The following sections provide details about the various Phaser 3250 configurations, available options and supplies, and more helpful information.



	Phaser® 3250D	Phaser® 3250DN
<b>Speed</b>	Up to 30 ppm (Letter) / 28 ppm (A4)	
<b>Duty Cycle</b>	Up to 30,000 pages / month	
<b>Paper Handling</b>	<b>Multipurpose Tray:</b> 1 sheet; Custom sizes: 3 x 5 in. to 8.5 x 14 in. / 76 x 127 mm to 216 x 356 mm <b>Tray 1:</b> 250 sheets; Sizes: Letter, Legal, Folio, Oficio, A4, JIS B5, ISO B5, Executive, A5, A6	
Paper input	Standard	
	Optional	<b>Tray 2:</b> 250 sheets; Sizes: Letter, Legal, Folio, Oficio, A4, JIS B5, ISO B5, Executive, A5, A6
Paper output	150 sheets	
Automatic two-sided output	Standard	
<b>Print</b>		
First-page-out-time	As fast as 8.5 seconds	
Resolution	600 x 600 dpi (up to 1200 x 1200 enhanced image quality)	
Processor	400 MHz	
Memory (std/max)	32 MB / 160 MB	
Connectivity	USB 2.0	10/100Base-TX Ethernet, USB 2.0
Language support	PCL® 6 and 5e emulations, IBM Pro Printer emulation, Epson emulation, GDI	PostScript® 3™ compatibility, PCL® 6 and 5e emulations, IBM ProPrinter emulation, Epson emulation, GDI
Print features	Watermarks, Poster printing, N-up, Fit to page, Scaling, Overlays, Booklets, Reduce/enlarge, Toner saver, Custom-size pages	
<b>Warranty</b>	One-year Quick Exchange, Xerox Total Satisfaction Guarantee	

# Specifications

Specifications			
<b>Device Management</b>	Printer Setting Utility for Windows, 3250DN add: CentreWare® Internet Services, SNMP 1-2, EtherTalk, HTTP, TCP/IP (DN configuration)		
<b>Print Driver Support</b>	<b>Apple:</b> Mac OS® X 10.3, 10.5 <b>Linux:</b> Red Hat® 8–9, Fedora™ Core 1–4, Mandrake 9.2–10.1, SUSE 8.2–9.2 <b>Microsoft:</b> Windows® 2000/XP (32- and 64-bit)/Server 2003 (32- and 64-bit)/Server 2008 (32- and 64-bit)/Windows 7 (32- and 64-bit)/Vista (32- and 64-bit)		
<b>Protocol Support</b>	<b>Connectivity:</b> USB 2.0, 10/100BaseTX Ethernet (DN configuration) <b>Management:</b> DHCP, SNMP <b>Network:</b> EtherTalk, HTTP 1.1, TCP/IP <b>Page Description Languages:</b> PCL® 5e/6 emulation, PostScript® 3™ compatibility (DN configuration), IBM Pro Printer emulation, Epson emulation, GDI		
<b>Media Handling</b> Paper Capacity	<b>Multipurpose Tray:</b> 1 sheet <b>Tray 1:</b> Up to 250 sheets <b>Tray 2 (optional):</b> Up to 250 sheets		
Supported Media Sizes	<b>Multipurpose Tray:</b> Custom sizes from 3 x 5 in. (76 x 127 mm) to 8.5 x 14 in. (216 mm x 356 mm) <b>Trays 1 and 2:</b> Letter, Legal, Folio, Oficio, A4, JIS B5, Executive, A5, A6		
Supported Media Weights	<b>Multipurpose Tray:</b> 16 to 43 lb. bond / 60 to 163 gsm <b>Trays 1 and 2:</b> 16 to 28 lb. bond / 60 to 105 gsm		
<b>Operating Environment</b>	<b>Temperature:</b> • Operating: 50° to 90° F (10° to 32° C) • Storage: 32° to 104° F (0° to 35° C)  <b>Relative Humidity:</b> • Operating: 20 % to 80 %  <b>Sound Pressure:</b> Printing: 54 dB(A), Standby: 29 dB(A) <b>Warm-Up Time (from sleep mode):</b> 15 seconds or less		
<b>Electrical</b>	<b>Power:</b> 110–127 VAC, 50/60 Hz or 220–240 VAC, 50/60 Hz <b>Power Consumption:</b> Printing: 400 W, Standby: 70 W, Power Save: 11 W ENERGY STAR: qualified		
<b>Dimensions</b> Width x Depth x Height, Weight	<b>Phaser 3250:</b> 14.3 x 14.5 x 9.4 in. (364 x 369 x 239.2 mm), 26.19 lb. (11.88 kg) <b>Optional 250-Sheet Tray 2:</b> 14.3 x 15.7 x 3.4 in. (364 x 400 x 86 mm), 8.09 lb. (3.67 kg)		
<b>Certifications</b>	Listed UL 60950/CSA C22.2 No. 60950, CE Mark applicable to Directives 2006/95/EC and 2004/108/EC		
<b>Supplies</b>	Description	Details	Part Number
	Standard-Capacity Print Cartridge	Average 3,500 standard pages <sup>1</sup>	106R01373
	High-Capacity Print Cartridge	Average 5,000 standard pages <sup>1</sup>	106R01374
<b>Accessories</b>	128 MB Phaser memory upgrade		098N02195
	250-sheet tray		098N02194
<b>Extended Service Agreements</b>	Annual Quick Exchange Service		E3250QA
	2 Years Additional Quick Exchange Service <sup>3</sup>		E3250Q3
	3 Years Additional Quick Exchange Service <sup>3</sup>		E3250Q4

<sup>1</sup> Declared Yield in accordance with ISO/IEC 19752. Yield will vary based on image, area coverage and print mode.

<sup>2</sup> Available for purchase during first 90 days of ownership.

# Support and Additional Information Sources

## Unrivaled Service and Support

Behind every Xerox product is a large network of customer support that's unrivaled in the industry and available when you need it. Xerox service professionals use leading-edge technologies to keep you up and running. They're even linked to the engineers who designed your product, so you can be confident when you choose Xerox. And Genuine XEROX® supplies are always readily available.

## Total Satisfaction Guaranteed

The exclusive Xerox Total Satisfaction Guarantee, recognized as unique in the industry, covers every Phaser device that has been continuously maintained by Xerox or its authorized representatives under a Xerox express warranty or Xerox maintenance agreement. You decide when you're satisfied.

## Xerox Office Services Support

### Asset Management Services

- Asset Optimization and Tracking — Process and tools to optimize an enterprise's office output infrastructure and reduce
- Overall costs
- Break-Fix Management — Single point of ownership and management for break-fix service for all brands of office output devices
- Supplies Management — Process and tools to procure, monitor and replenish all document-related supplies proactively

### Imaging and Output Management Services

- Output Management — Single point of management of office output from all output devices, regardless of manufacturer
- Image Capture and Workflow — Cost-efficient solutions for capturing, managing, retrieving and distributing information into digital repositories

## Support Services

- Technology Procurement and Deployment — A creative and flexible end-to-end print/computer product acquisition solution that uses a single-point-of-contact model while lowering the total cost of acquisition
- Help Desk Services — A broad range of enterprise services managed through a centralized single point of contact and delivered through an on-site or off-site model
- End User Services — Microsoft software implementation, IT project consulting, and customer education

### Access Managed Services

- Student and Library Patron Access — Custom designed and implemented customer-managed solutions for student and library patron print access management

## Additional Information Sources

### What's in the box:

- Printer
- Print cartridge (Average 2,000 standard pages<sup>1</sup>)

- Power Cord
- World kit
  - Software and Documentation CD
  - Registration Card
  - Warranty booklet

### Phaser 3250 Front Panel:

- The front panel offers tools and information pages to help with machine setup, feature selections, operational problems, media feed and supply issues.

### On the web:

Visit [www.xerox.com/office](http://www.xerox.com/office) for:

- Product, supplies and support information
- Downloading drivers
- Finding your local Xerox sales representative
- Online documentation

Visit [www.xerox.com/office/support](http://www.xerox.com/office/support) for:

- Support and service information, including the same troubleshooting Knowledge Base used by Xerox Customer Support staff to provide the latest technical information on:
  - Application issues
  - Errors
  - Print-quality issues
  - Troubleshooting

<sup>1</sup> Declared Yield in accordance with ISO/IEC 19752. Yield will vary based on image, area coverage and print mode.

## Questions? Comments? Problems?

If for any reason you need to contact your Xerox sales representative, please call 1-877-362-6567, or visit us on the web at [www.xerox.com/office](http://www.xerox.com/office).

